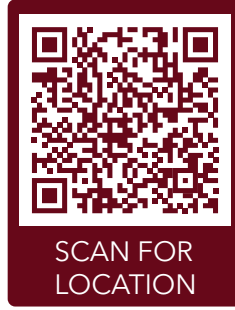




Patidar Chowk, Sadhuvasvani Road, Rajkot.



SCAN FOR  
LOCATION

Project By  
**Gokul Developers**

Contact

**Dinesh Ghodasara**  
+91 98258 54835

**Jagdish Bopaliya**  
+91 99251 34999

**Ambrish Mehta**  
**B.E. (Civil)**  
+91 94281 56037

**Dinesh Aghara**  
+91 98253 14332

Consulting Engineer  
**Bhavesh Patel**

Structural Engineer  
**Manish Doshi**

Legal Advisor  
**Alpesh Davda**



4 BHK BLISSFULL LIVING

ગૌરવશાળી ઘર,  
પ્રતિષ્ઠીત લોકોનું સરનામું.



# Shree NIVAS

4 BHK BLISSFULL LIVING

*Luxury*

જો તમે આધુનિક સગવડો સાથે વૈભવી ઘર શોધી રહ્યા હોવ તો  
તમારી શોધ અહીં પૂર્ણ થાય છે.  
ખરેખર આનંદમય જીવન માટે  
**શ્રી નિવાસ** એ જ તમારું લક્ષ્યસ્થાન છે.







*The Luxurious Life*  
*Living at*  
**Shree Nivas**





*Beautiful  
Journeys of Life  
Stay here...*





Happiness Inspired by

# Unlimited *Luxury*



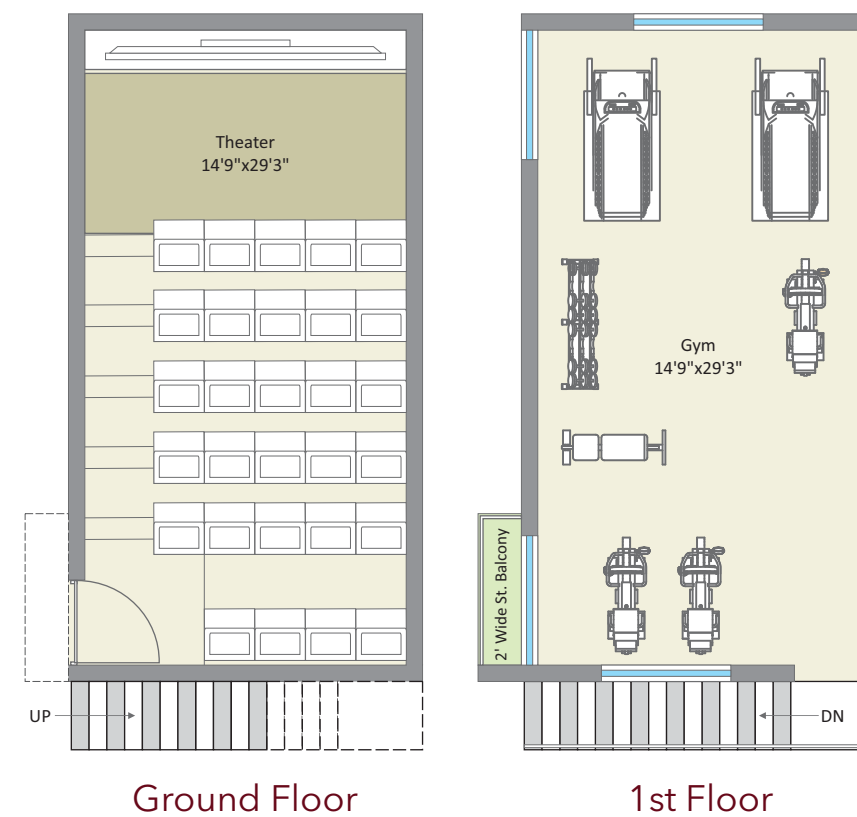












“  
EXPAND YOUR LIFE  
CHANGE YOUR WORLD  
”



TYPICAL FLOOR PLAN



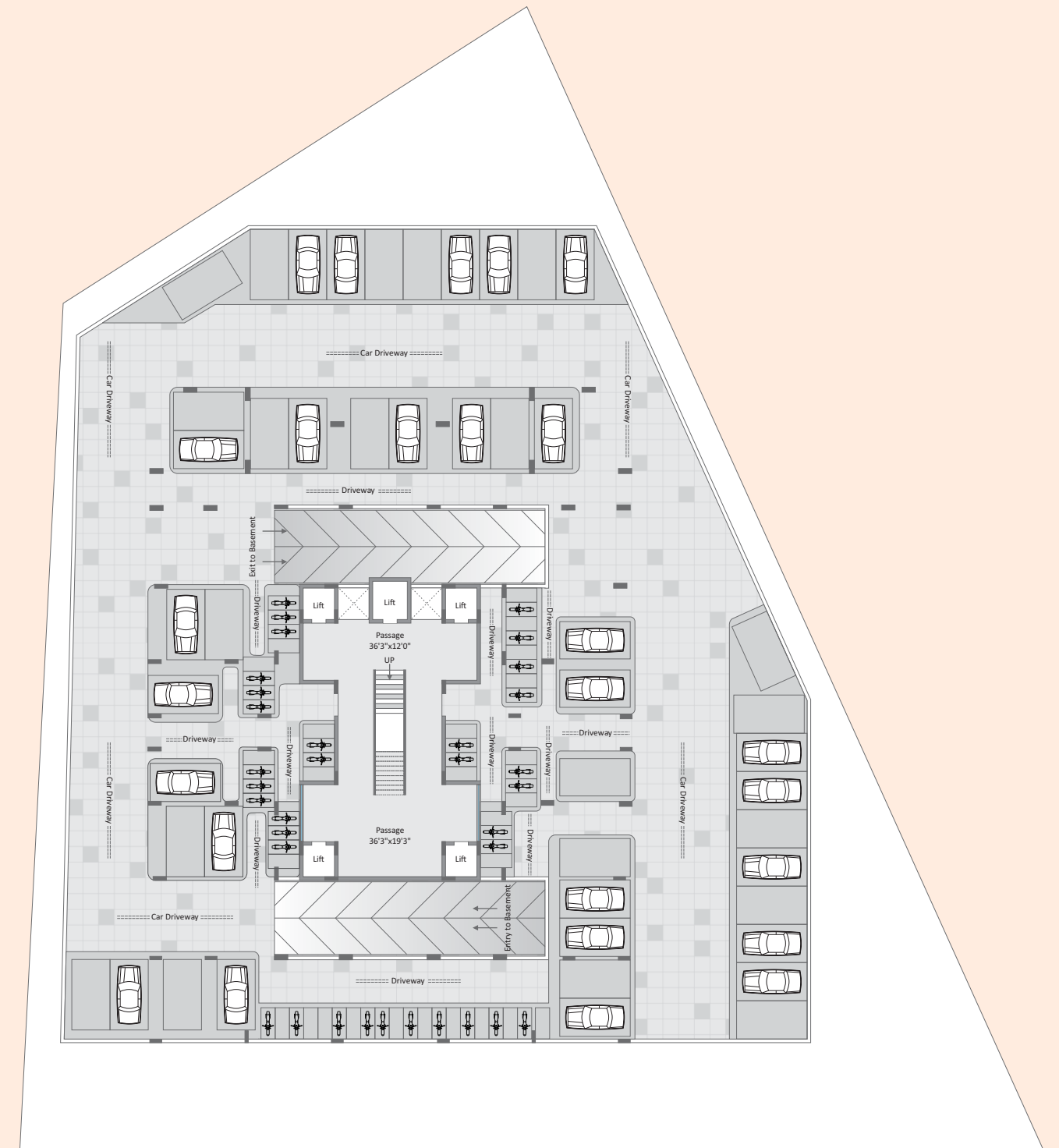


# GROUND FLOOR PLAN



15 Mt Wide Road

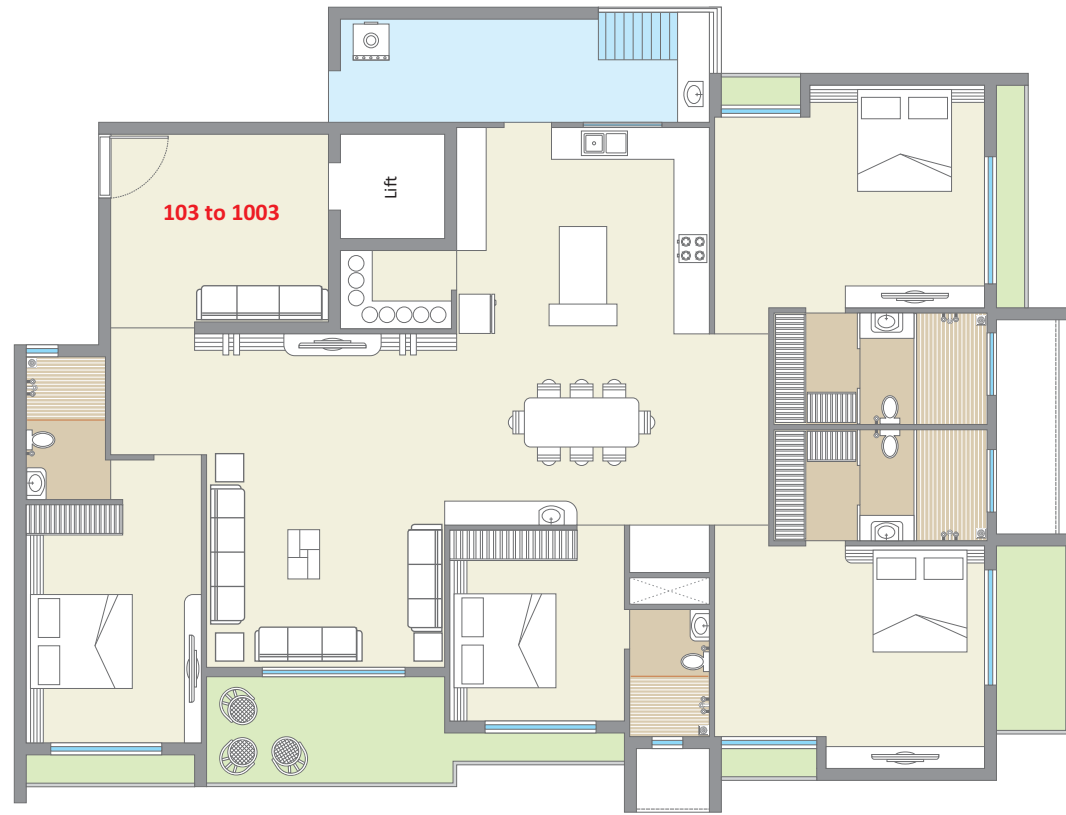
# BASEMENT FLOOR PLAN





# 4 BHK

3D ISO  
Cut Section



104 to 1004	101 to 1001
103 to 1003	102 to 1002



દૂર સુધી નજરે પડે  
ફક્ત **સ્વચ્છ** અને **સલોણું આકાશ**  
નીલા ગગનને તળે,  
અહીં સંપૂર્ણતા લે **આકાર !**



## GENERAL FACILITIES & AMENITIES



Entrance Foyer



Intercom System



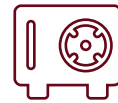
CCTV Camera



Alloted Car Parking



Solar Water Heater  
+  
Solar Panel For  
Common area



AC Drainage System



24 x 7 Security



4 Auto Door  
Personal Lift +  
Common Lift



Gas Connection



Common Bore



Fire Fighting System



Generator



Loanable Title Clear



GYM



Theater



Exclusive Reception  
Area

## SPECIFICATION

### Flooring



- High-end vitrified.
- Porch/ wash area with rustic flooring.

### Doors & Windows



- Main & servant entry flush door.
- All window will be super durable powder coated sliding window.
- We don't provide any internal door.

### Paint



- Exterior all common areas with royal paint finish.

### Power



- DG backup for common elevator, water pumps and common area lighting.

### Wash Area



- Separate servant entry for wash area.

### Parking



- Two Layer Parking.
- Allotted Car parking for 2 car.

### Electrical Fittings



- ISI certified modular switches.
- Copper wires with ample plug points and switches.
- TV & set - top box point in living room & master bedroom.
- Electric plug points & plumbing points for AC in every bedroom.

### Kitchen



- Designer tiles up to beam bottom level in the kitchen.
- Granite or full body black or white platform.
- Sufficient electric plug point & switches.
- Provision of R.O. water system.

### Bathroom & Plumbing



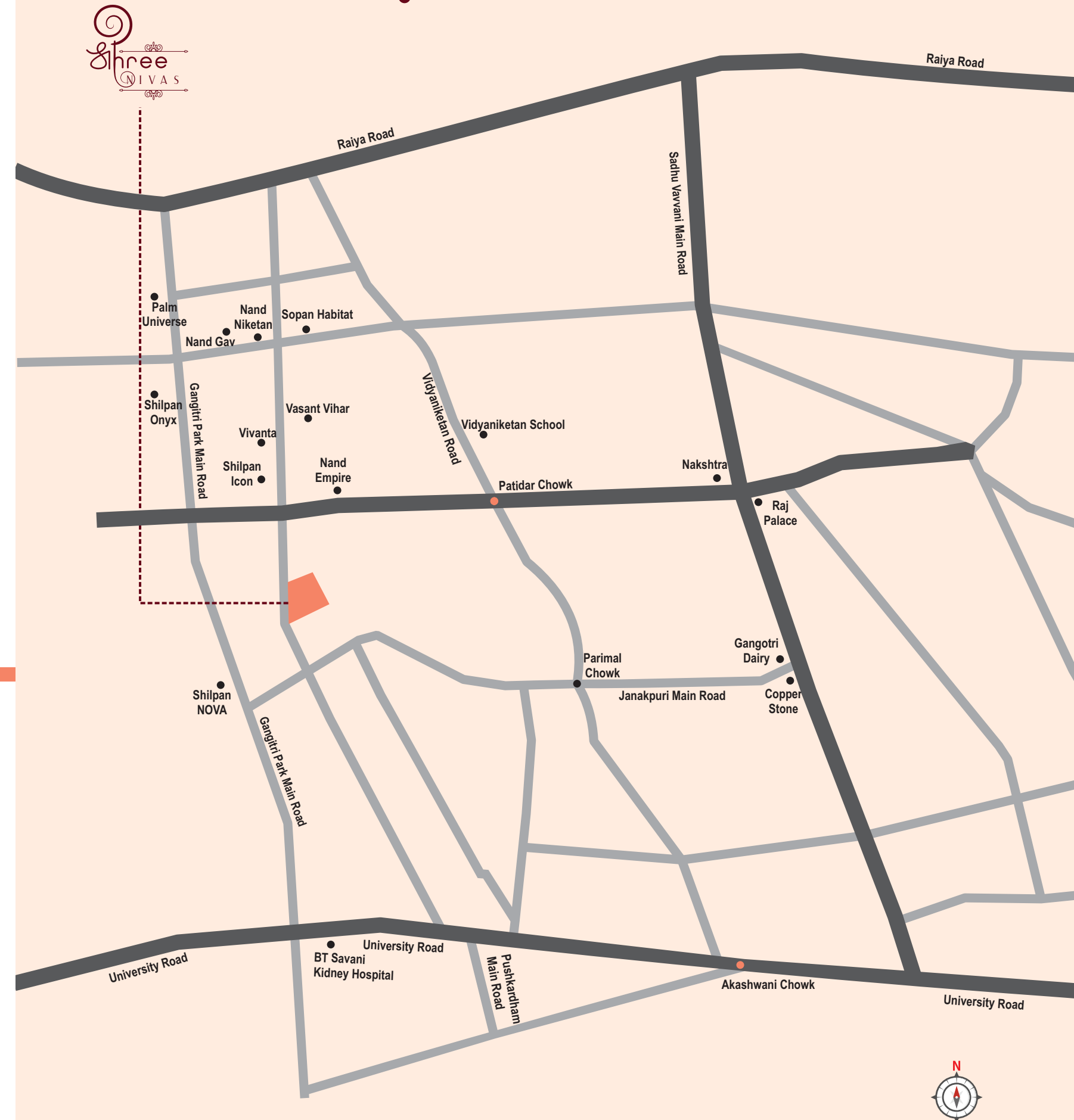
- Exclusive designer tiles in every bathroom.
- Jaquar or equivalent CP fittings in every bathroom.
- Common solar provision in every bathroom.
- Premium sanitary fittings in every bathroom.

### Walls & Ceilings



- It will be treated with putty.

## LOCATION MAP



Rera No. :

#### LEGAL DISCLAIMER:

All the elements, objects, treatment, materials, equipment & color scheme are artisan's impression & purely for presentation purpose. By no means it will form a part of the amenities, features or specification of our final product.

#### NOTE:

All rights for alteration, modification & development in design or specification on by architects & / developer shall be binding to all the members. Completion certificate as per RMC rules, clear title documents will be provided by promoters for loan purpose. This brochure is for private circulation only. By no means it will form part of any legal contract. Stamp duty registration charges, legal charges, PGVCL charges, society maintenance deposit etc. shall be borne by the purchaser. TDS, TCS, GST & / any other taxes levied in future will be borne by the purchaser as applicable. Any addition charges or duties levied by the government / local authorities during or after completion of the scheme shall be borne by the purchaser. In the interest of continual developments in design & quality of construction, the developer reserves all rights to make any changes in the scheme including and not limited to technical specification, design, planning, layout & all purchasers shall abide by such changes. Changes / alteration of any nature including elevation, exterior color scheme, balcony grill or any other changes affecting the overall design concept & outlook of the scheme are strictly NOT PERMITTED during or after the completion of the scheme. Any RCC member (beam, column, slab) must not be damaged during your interior work. Low-voltage cables such as telephone, TV and internet cables shall be strictly laid as per consultant's service. No wire / cables / conduits units shall be laid or installed such that they form hanging formation on the building exterior faces. Common passages / landscaped areas are not allowed to be used for personal purpose. AC outdoor unit's space is already designed in consultation with HVAC consultant. It is planned according to design specification / elevation, available space etc. No changes in location can be made on personal basis.