



Sitara *height*
We Build Your Status

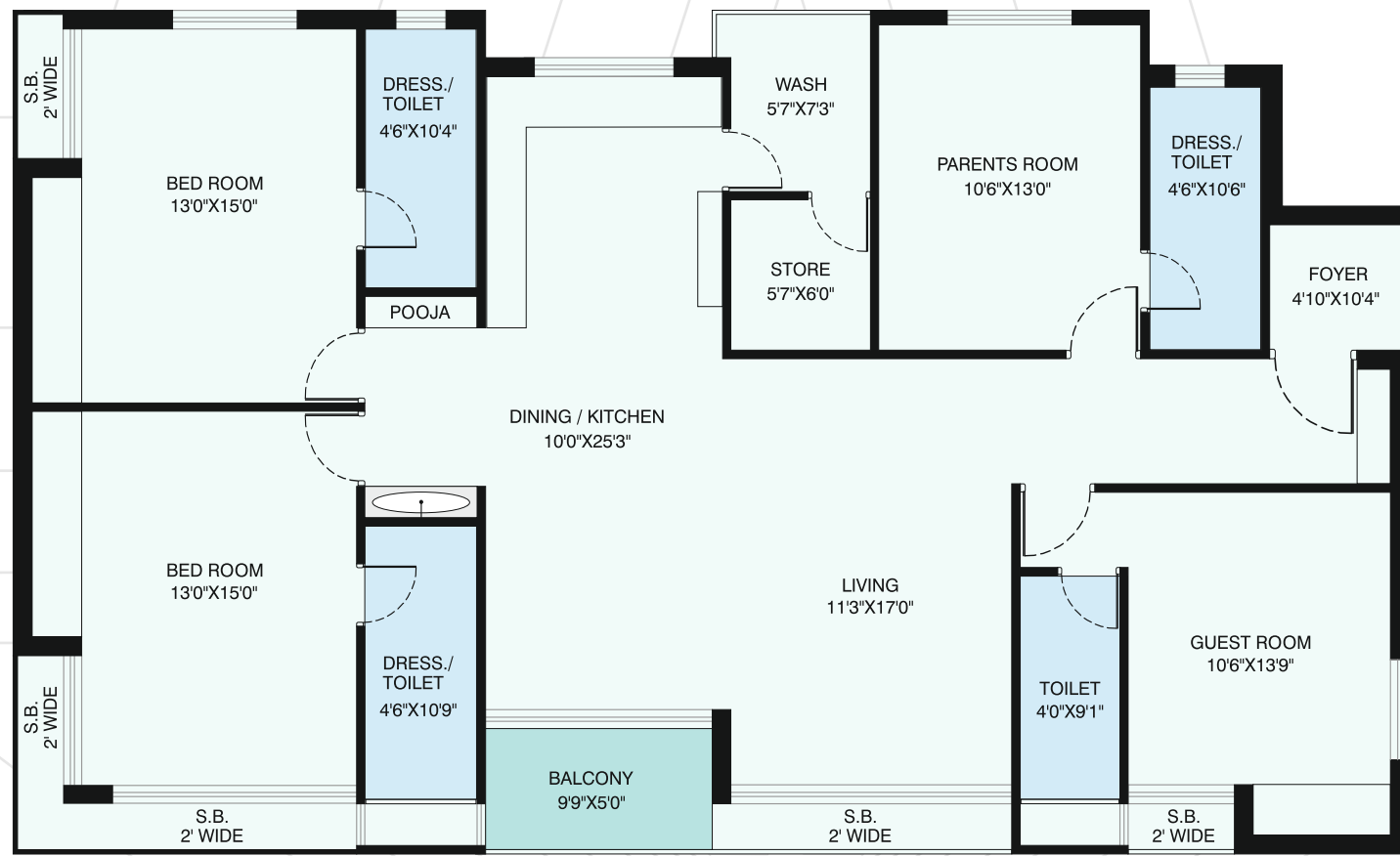
General Terms & Conditions
Payments Like Stamp Duty, Registration Charges, Legal, PGVCL & Society Maintenance Deposit Shall Be Borne By The Purchaser.
Taxes Extra As Applicable Shall Be Borne By The Purchaser.
In The Interest Of Continual Development In Design & Quality Of Construction, The Developers Reserve All Rights To Make Any Changes Without Prior Notice In The Technical Specifications, Design, Planning Layouts.
Any Changes Made By The Developer In The Planning Or Layout Due To The Changes In FSI Shall Be Accepted By The Purchaser.
Electric, ADP Registration & Water Connection Charges Shall Be Borne By The Purchaser. No Refund In Labour Work.
All Information, Facilities And Layouts Displayed In This Brochure Is Only For Your Kind Reference And Shall Have No Legal Binding On The Developers.

AD LINE 06251_30659




Sitara *height*
We Build Your Status

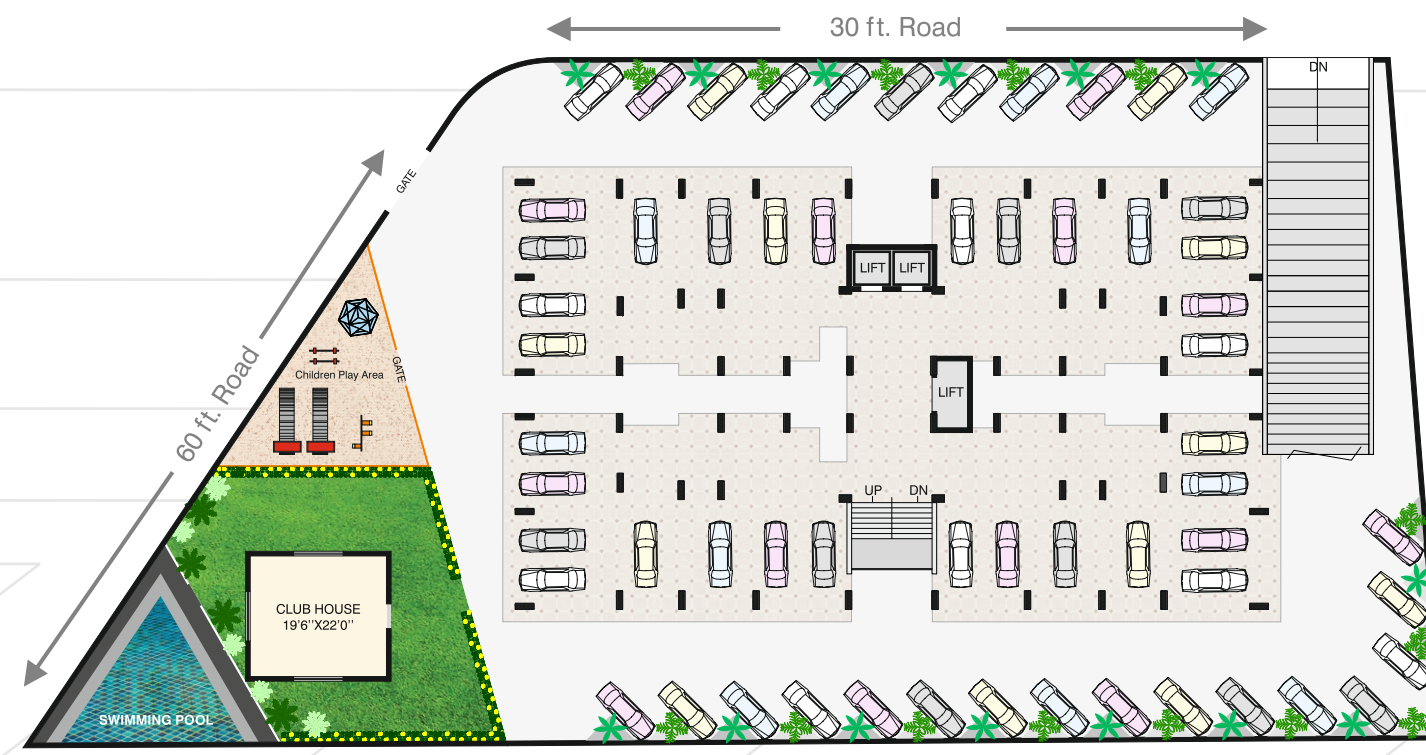




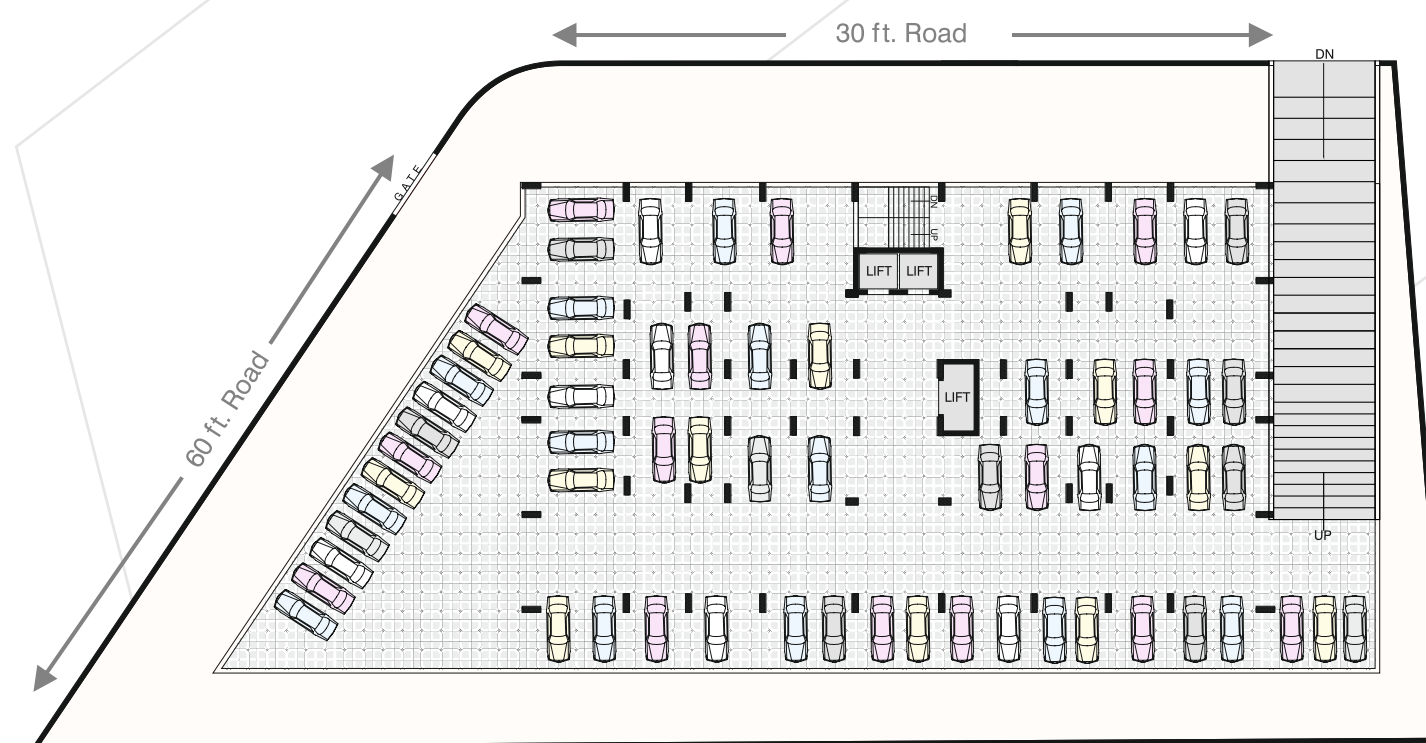
4 BHK Plan



Ground Floor Plan



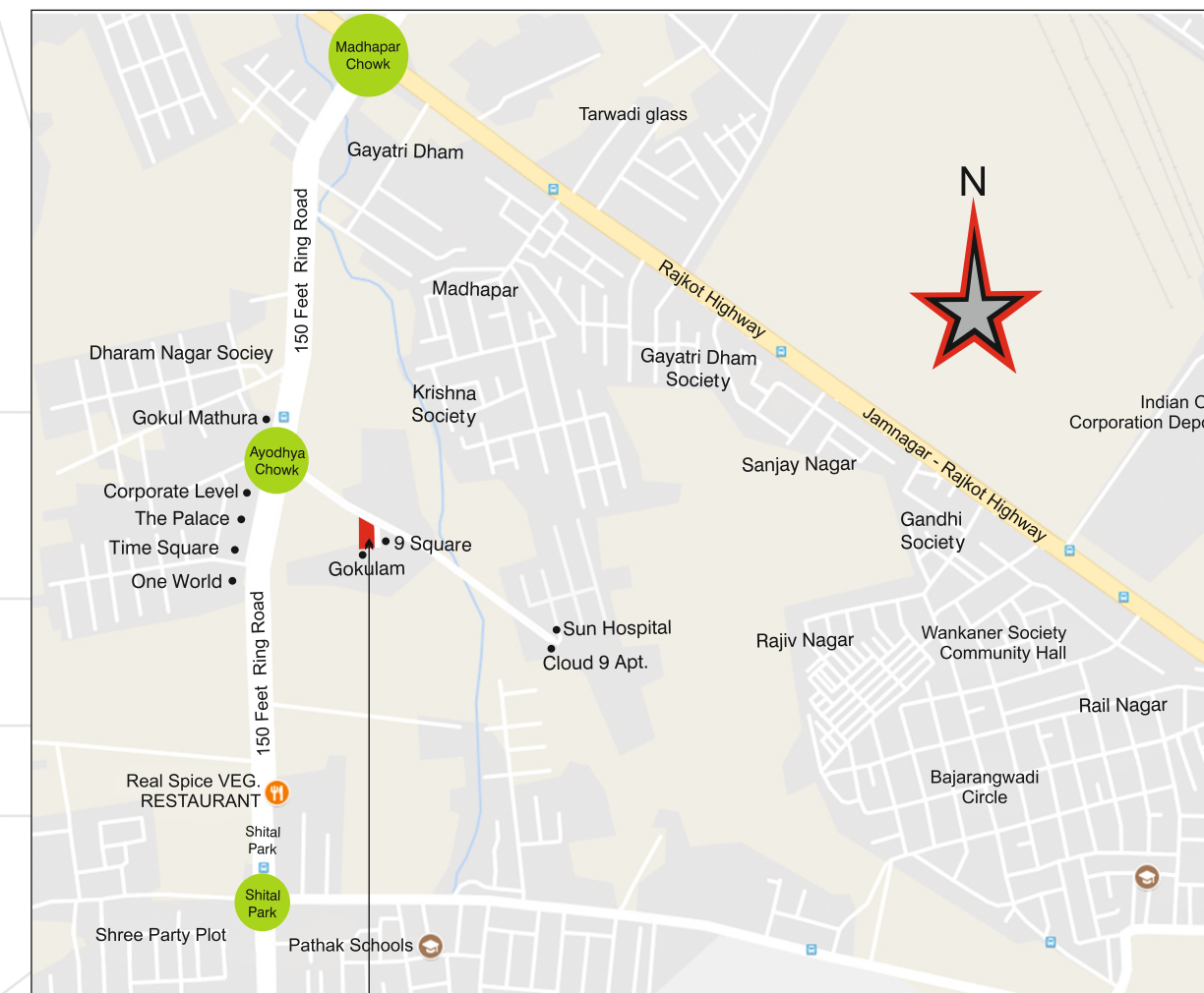
Cellar Parking



Typical Floor Plan (1st to 13th Floor)



Location



Specifications

- * FINISH & PAINT**
 - Interior Wall Will Be Treated With Primer Putty.
 - Exterior Wall Will Be Painted With Weather Shield Paint.
- * FLOORING**
 - Residence Floor With First Grade Vitrified (32"x32")
 - Flooring With Epoxy Grouting.
 - Balcony And Washing Area With Ceramic Tiles.
 - Common Area With Natural Stone And Vitrified Tiles.
- * DOORS AND WINDOWS**
 - U.P.V.C. Sliding Windows With Light Tinted Glass And Mosquito Net.
 - Granite Seal On 4 Sides Of Window.
 - Door Frames (internal) In Water Proof ISI Plywood.
- * TOILET**
 - Ceramic / Vitrified Tiles Flooring.
 - Ceramic / Vitrified Tiles Up To Ceiling.
 - Premium Quality CP Fitting In All Bathrooms.
 - Premium Range Of Branded Sanitary Ware And Pipe Fittings.
 - Solar Hot Water Supply (only In Bathrooms).
- * KITCHEN**
 - Granite Platform With Stainless Steel Sink.
 - Ceramic / Vitrified Tiles Up To Slab Level.
 - Kitchen Chimney Pipe.
 - GSPC Gas Connection.
- * ELECTRIFICATION**
 - 3 Phase Concealed ISI Copper Wiring.
 - Ample Light Points And Reputed Brand Modular Switches.
 - TV And Internet Points In All Flats.
 - Earth Leakage Circuit Breaker (ELCB).
 - Intercom Points In All Flats.
- * AMENITIES**
 - Most Exclusive Entrance Lobby With Rich Finishings.
 - 3 Elevators.
 - Water Conditioning (Water Softner Unit)
 - Earthquake Resistant Design.
 - Anti - Termite Treatment.
 - Solar Water Heater.
 - Ground Floor And Cellar Parking.
 - Rain Water Harvesting System.
 - Children Play Area.
 - Vibrant Landscaped Exterior Garden With Clubhouse (With Facilities Like Gymnasium, Treadmill, etc.)
 - Swimming Pool.
 - CCTV Camera.
 - Power Generator Back-up For Lift And Common Area.



60 ft Road, Opp. Gokul-Mathura,
150 ft Ring Road, Ayodhya Chowk,
Rajkot.

For Details Contact :
Mobile : +91 81000 28000

Architect :
Dipak Nathvani
98242 11249

St. Design :
Kalpesh Satasia
94277 22416

Project by :



DRAFT BROCHURE

Office :
FF-9, Siddharth Complex,
Jalaram-2, B.I.L. Krishna Hospital,
Unit. Road, Rajkot - 360 007.
E-mail : sitaraconstruction2017@gmail.com

RERA No.: PR/GJ/RAJKOT/
RAJKOT/Others/RAA00540/261017

Gujarat RERA Website:
www.gujrera.gujarat.gov.in