

A stylized tree logo with a black trunk and branches, filled with colorful leaves in shades of red, yellow, green, and blue.

PRIME
KUTIR

A horizontal bar with segments of red, yellow, orange, blue, and green.

2 & 3 BHK LUXURIOUS DUPLEX





Your Dream Family Space at..



Discover a home where luxury glows warmly all about you, ensconced in a wonderfully designed enclave that is replete with every amenity that you insist upon. Welcome to Prime Kutir...!

Located in the Vadodara's most preferred residential area. Close to work and every convenience, yet insulated from the city's bustle, it brings back the charm of the days when a house was truly a place to come home to.

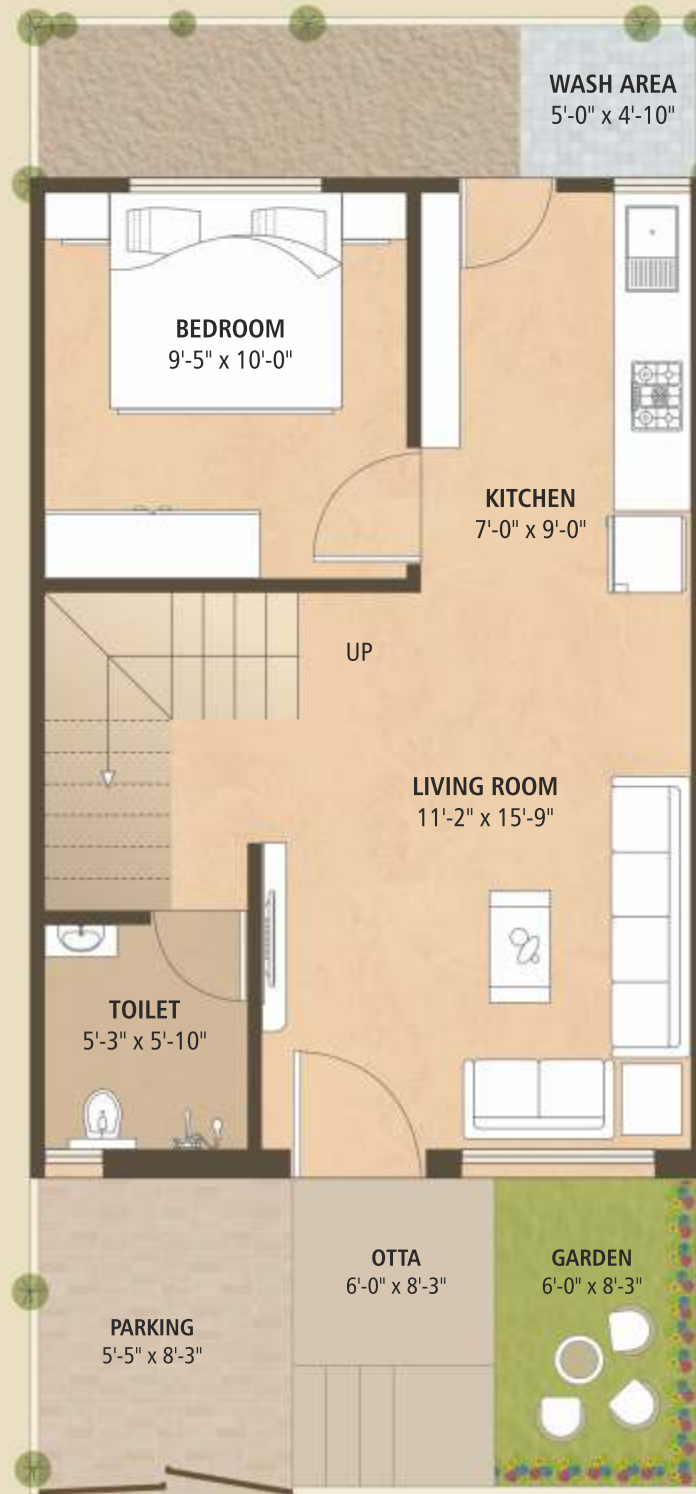
155 Luxurious Duplex set in well developed landscapes. Lifestyle amenities to add stylish ease to life. Ultra-premium finishes for a touch of class. This is the place that you should call home.





3 BHK Duplex
Floor Plan

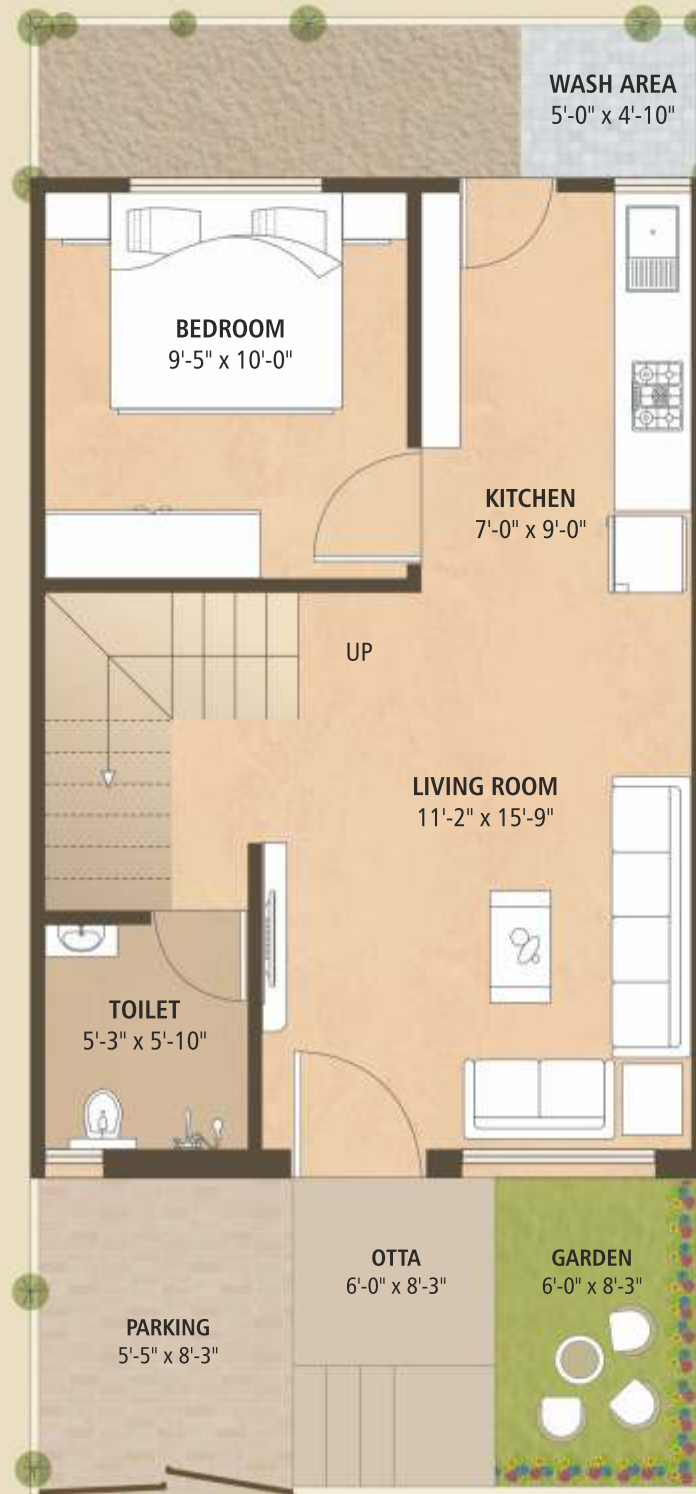
TYPE - A / A1 / C





2 BHK Duplex
Floor Plan

TYPE - B



LAYOUT



3 BHK
TYPE - A / A1 / C

2 BHK
TYPE - B





| Plot Area in Sq.Ft. | |
|---------------------|------|
| Plot No. | Area |
| A-01 | 940 |
| B-02 to B-09 | 683 |
| A-10 to A-11 | 989 |
| B-12 to B-19 | 683 |
| A-20 to A-21 | 996 |
| B-22 to B-27 | 683 |
| A-28 to A-29 | 891 |
| A-30 | 1549 |
| A-31 | 1503 |
| A-32 to A-45 | 1031 |
| A-46 | 1131 |
| A-47 | 1182 |
| A-48 | 1129 |
| B-49 to B-56 | 683 |
| A-57 | 1003 |
| A-58 | 989 |
| B-59 to B-64 | 683 |
| A-65 | 1156 |
| A-66 | 1527 |
| A-67 | 937 |
| A1-68 | 1219 |
| A-69 | 1209 |
| A-70 to A-72 | 732 |
| A-73 | 721 |
| A-74 to A-75 | 683 |
| A-76 | 981 |
| A-77 | 996 |
| A-78 to A-81 | 683 |

| Plot Area in Sq.Ft. | |
|---------------------|------|
| Plot No. | Area |
| A-82 | 792 |
| C-83 | 984 |
| A-84 | 875 |
| A-85 to A-86 | 874 |
| B-87 to B-90 | 683 |
| A-91 to A-92 | 996 |
| B-93 to B-98 | 683 |
| A-99 | 1133 |
| A-100 | 1125 |
| B-101 to B-106 | 683 |
| A-107 to A-108 | 996 |
| B-109 to B-112 | 683 |
| A-113 to A-114 | 1003 |
| A-115 | 1070 |
| A-116 | 875 |
| A-117 to A-118 | 866 |
| B-119 to B-122 | 683 |
| A-123 to A-124 | 971 |
| B-125 to B-132 | 683 |
| A-133 | 1156 |
| A-134 | 1125 |
| B-135 to B-142 | 683 |
| A-143 to A-144 | 996 |
| B-145 to B-148 | 683 |
| A-149 to A-152 | 843 |
| A-153 to A-154 | 875 |
| A-155 | 983 |

Amenities

- Landscaped Garden with Children Play Area
- Senior Citizen Sitting Area
- Spacious Planning
- Elegant Main Entrance Gate
- Street Lights
- Internal Trimix Road with Paver block
- Underground Cabling for wire free look
- Anti-termite treatment
- Number plate to each unit
- R.O. System in each unit
- Decorative compound wall around the society
- Impressive S. S. Railing in stair case

Specification

STRUCTURE :

All RCC & Brick work using superior quality material as per structural Engineer's design.

FLOORING :

High grade vitrified tiles in all rooms

DOORS & WINDOWS :

Doors : Aluminum sliding window with safety grills.

Windows : Attractive entrance door with standard safety lock

All internal good quality flush doors with both side laminated.

KITCHEN :

Black granite platform with S.S. Sink, Designer tiles upto slab level

PAINT & FINISH :

Internal smooth finish plaster with putty and distemper, External plaster with weather resistant paint.

BATHROOMS :

Elegantly designed toilets with anti skid floor tiles and designer wall tiles in all bathrooms. Premium quality bath fitting with hot & cold water supply facility with shower in all bathrooms.

WATER :

Underground & Overhead tank.

ELECTRIFICATION :

Adequate light points & plug points in all rooms. Concealed copper ISI wiring & branded premium quality modular switches with sufficient points. Provision for T.V. points at convenient locations. AC points in master bedroom with centralized distribution board & MCB

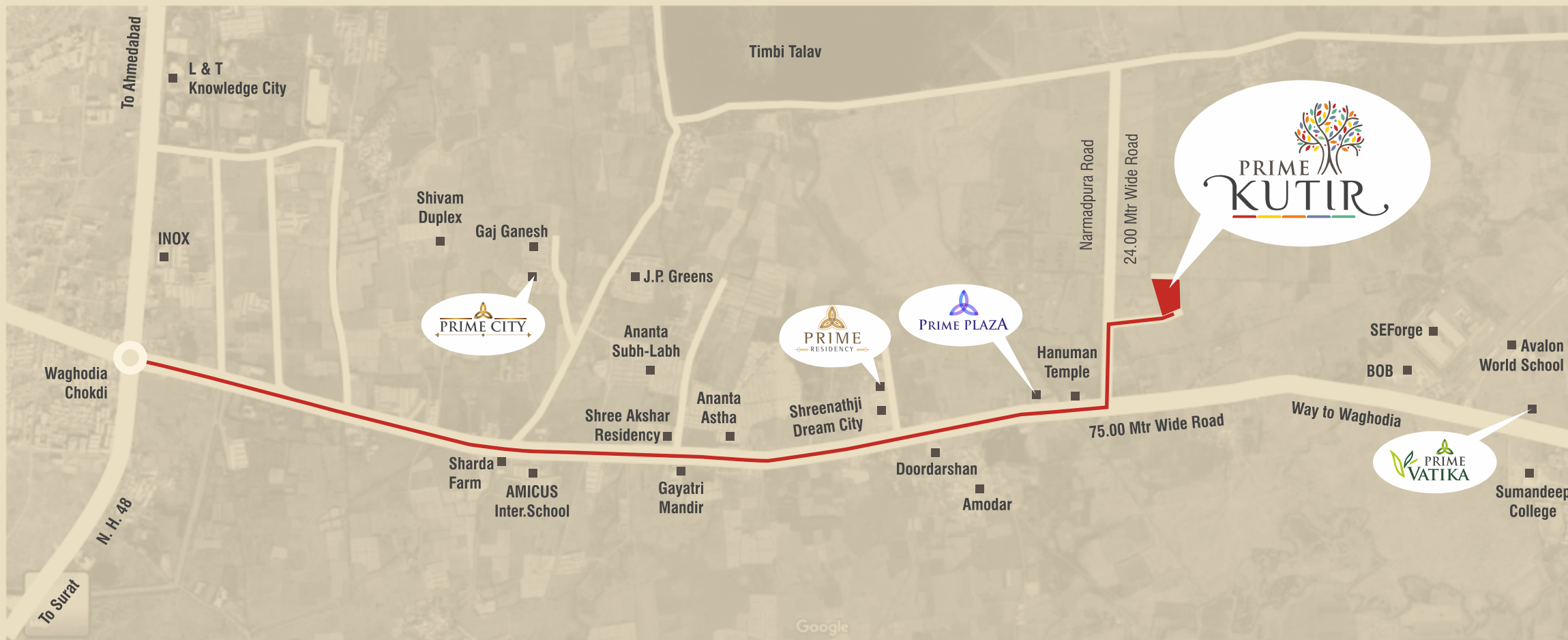
TERRACE :

Suitable water proofing and also " china mosaic" flooring.

Waghodia ↑

75.0 MTR WIDE ROAD

Vadodara ↓



Rera Reg. No. : PR/GJ/VADODARA/VADODARA/Others/RAA09135/061021 | Website:- www.gujrera.gujarat.gov.in

Developers : 
**PRIME
CREATORS**

Site :- "Prime Kutir"
Bs. Hanuman Temple, Narmadpura Road,
At. Po. Pavlepur, Waghodia Road, Vadodara - 390019

Booking Contact :
M : 97222 81822 / 81287 92934 / 98981 15125
E : info@prime-builders.com

Architect :
Advance Engg. Architects
Structure :
Zarna Associates

Payment Terms :-
25% - Booking
25% - Plinth Level
15% - Ground floor slab level
15% - First floor slab level
15% - Plaster Level
05% - Finishing

NOTES • The following will be changed extra in advance / as per government norms: (a) Stamp duty & Registration charges, (b) Service tax, VAT or any such additional government taxes if applicable in future. e.g. GST, (c) Maintenance deposit, (d) Deposit for New electric connection. (e) Infrastructure development charges. • If any new tax applicable by central states government in future, it will be borne by the buyers / members. • Possession will be given only after two months of settlement of all accounts and MGVL connection. • Continuous default in payments leads to cancellation. The developers reserve all the rights to change the plan, elevation, specification or any details will be binding to all. • In case of delay in water supply, light connection, drainage work by the concerned authority, developers will not be responsible. • Developers will not be responsible for any damage due to natural calamities • Changes in any structural design & changes in any external facade will not be permitted under any circumstances. • Internal changes will only be permitted with prior permission • If any situation of cancellation occurs developers reserves the rights for refund. • This brochure is for information purpose only. It does not form a part of the agreement or any legal document. The developer retains the right to alter the specification without any consent of the member.