

Rathod

Chambers

Built for long lease

modern amenities
urban location
ideal for corporates

Rathod
Chambers

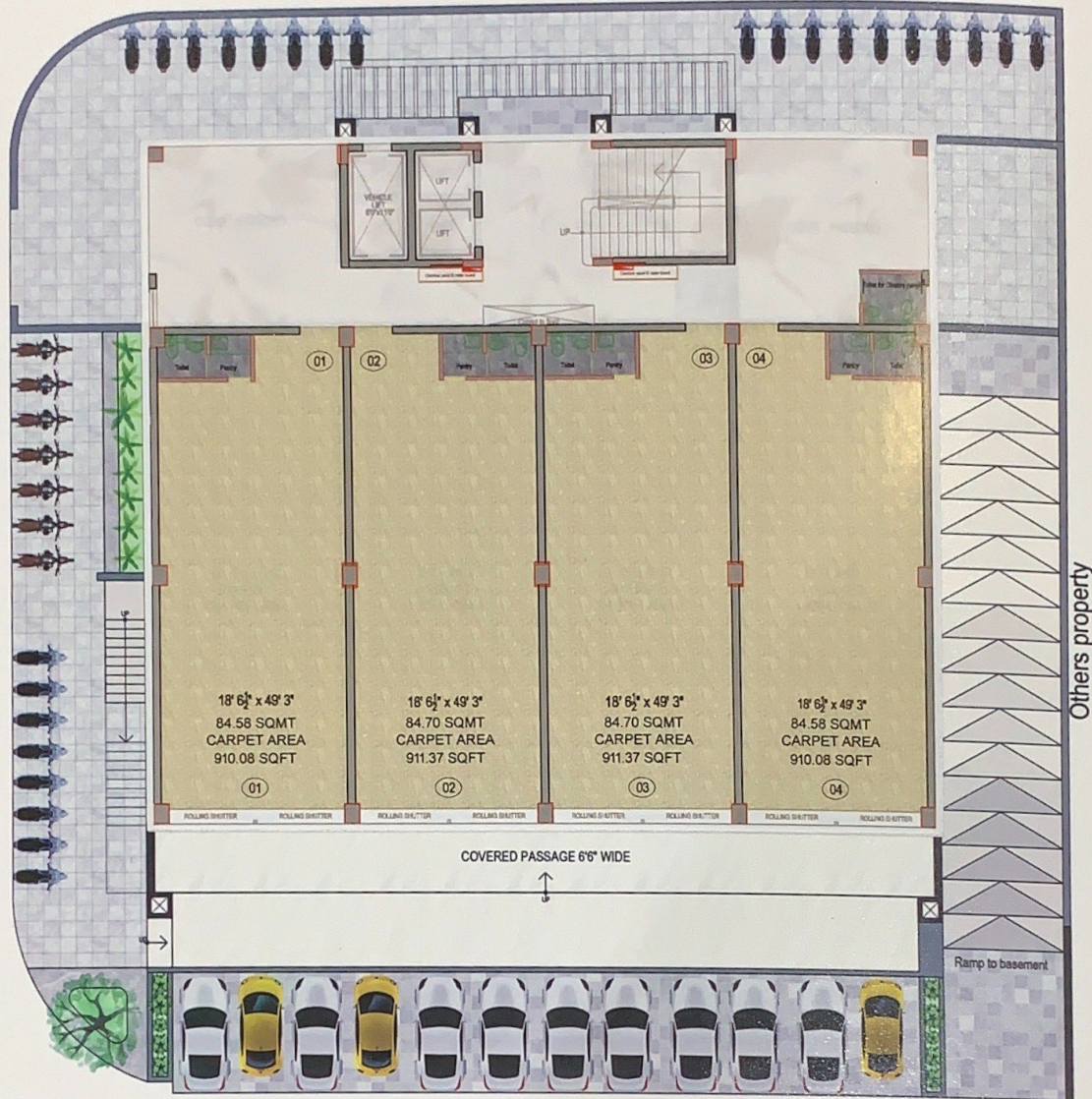


Rathod Chambers



6.00 mt. Wide Road

7.25 mt. Wide Road



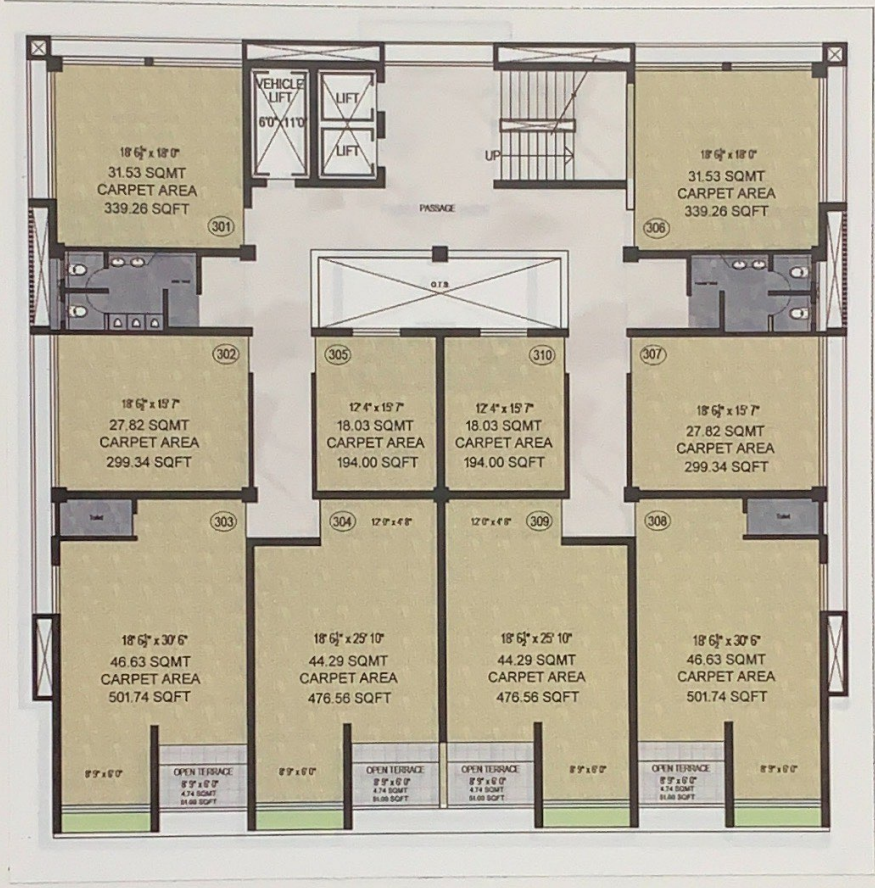
Rathod
Chambers

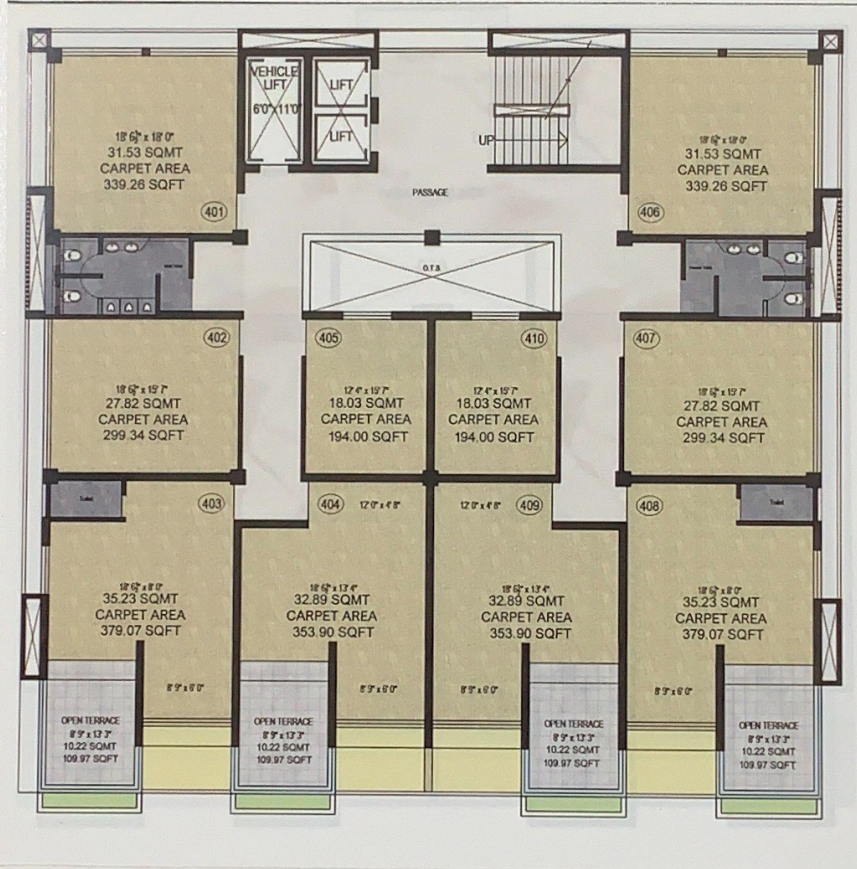
Ground Floor

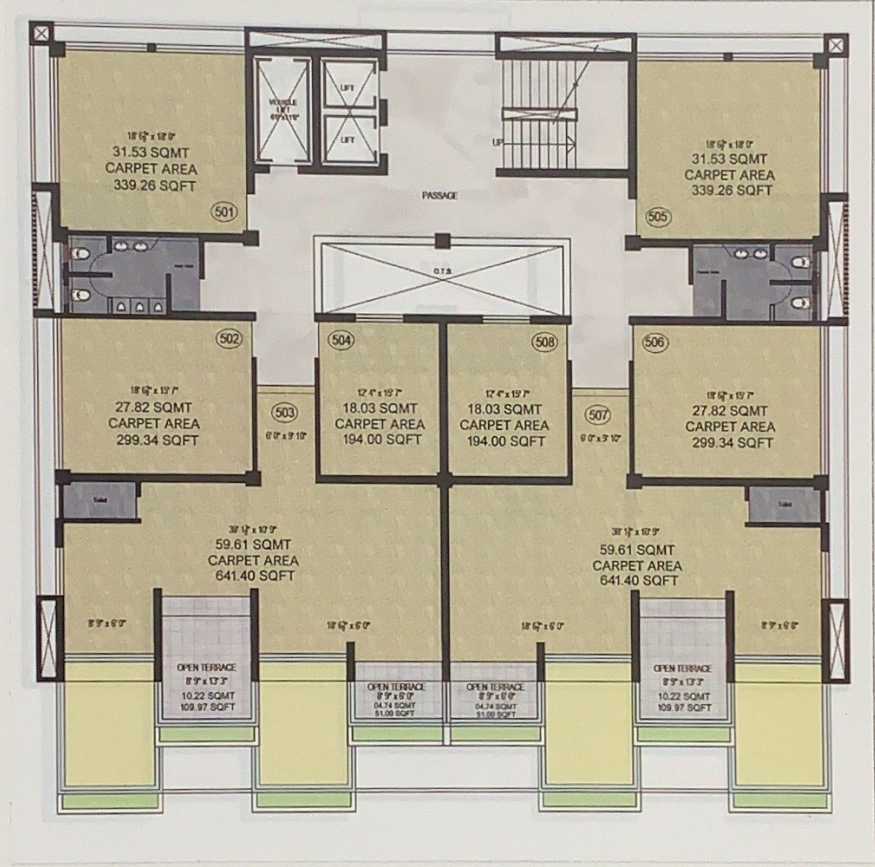


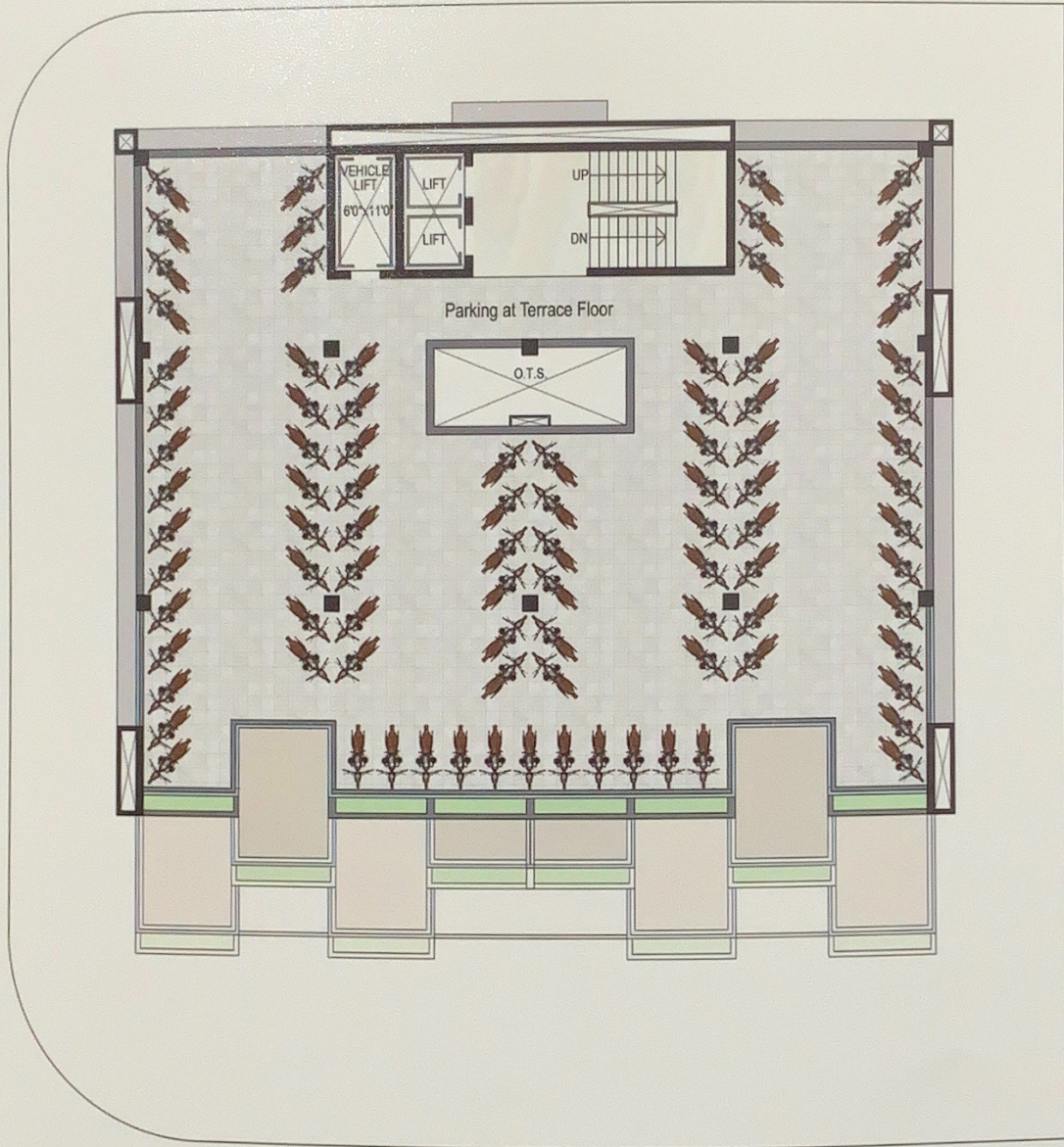


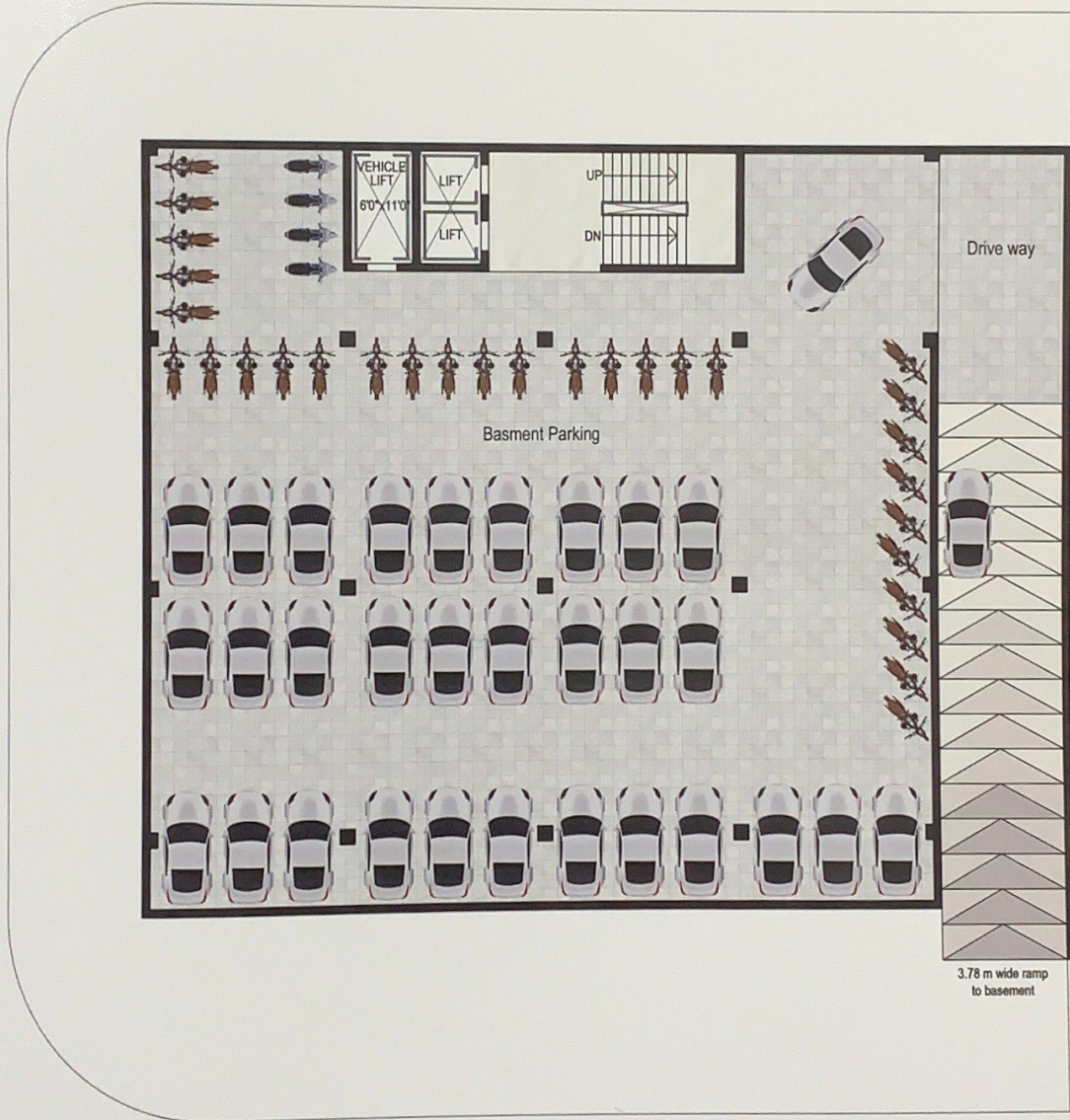












Amenities:



Securities:

All common areas under CCTV surveillance



Fire Safety:

Fire detectors & Fire extinguisher



Parking:



Lift Systems:

High quality elevators.
Vehicular elevator.

Other Highlights:

- Premium quality vitrified tiles flooring.
- Private terraces for front offices.
- Astonishing elevation to lead excellent business.
- Anodized aluminum section windows.
- Premium class plumbing system with premium ceramic tiles for all toilet blocks.
- Provision for solar panel system.
- 3 Phase power connection.
- Standard make auto door elevators.
- External elevations with premium stone cladding & texture plaster.

Note : This building or any part of the building is not for sale. It is only for the long lease.
This brochure is made only for the purpose to display basic information to lessee.

Rathod Chambers



Contact :
Himmat Rathod
+91 98252 72322

Architect:



AMA Design & Project Management
Ar. Ashok Mistry - Ar. Pratik Mistry
+91 999 881 5851-52

Structural engineer :
Hitesh Tank
+91 98248 65506

