

Project By:

DAMODARDAS
A DMC Group SINCE 1961

CALL
9898 82 8484

Developers
DAMODARDAS ENTERPRISES

Site: Nr. Vicenza Exotica, Off Gotri - Sevasi Main Road,
New Alkapuri, Vadodara.

Architect: Rohit Hingurao | **Structural Consultant:** Vishwakarma Consultants

RERA REG. NO.: PR/GJ/VADODARA/VADODARA/Others/RAA09417/031221
RERA WEBSITE : www.gujrera.gujarat.gov.in

 RUPNICH 8925047913 | 3D Visualisation by: LUCID - The Artistry

Project By:


DAMODARDAS
A DMC Group SINCE 1961

CALM
SPACIOUS
PRIVATE


THE PALACE
GREEN LIFE


3BHK PREMIUM APARTMENTS

YOUR
DREAM HOME
AWAITS



With a more than 75 year old history and heritage committed to elegance exclusively and flawless craftsmanship in Jewellery business. Now Damodardas Group is diversifying to carry on the legacy into the real estate scenario, Developed for contemporary living. The Palace is a fast-growing township with all modern amenities.

After the grand success of "The Palace" at Ajwa Road now we are coming with our new project "**The Palace Greenlife**" at Gotri, New Alkapuri.

Give your Standard of Living an Upgrade.

Dwell
in to world of greenery

Nature that helps you brings the inner picture of your soul, the place of Serenity awaits your company.



Time to
Dwell
with Comfort



Attaining
Direct Intuitive Insight.





Place

To Spark Your Dreams
& Aspiration

Ground Floor Plan



Typical Floor Plan





Tower A-B-C

Typical Floor Plan

01	Foyer	6'6"x4'0"
02	Pooja Area	6'10"x6'6"
03	Living/Dining	18'9"x14'7"
04	Balcony	17'6"x5'0"
04 A	Balcony	18'9"x2'0"
05	Kitchen	10'6"x8'6"
06	Store	6'6"x3'9"
07	Utility	6'0"x5'0"
08	Bathroom	4'6"x4'6"
09	Bed Room-1	11'0"x10'0"
10	Bed Room-2	11'0"x13'9"
11	Standing Balcony	6'9"x2'0"
12	Bathroom	7'9"x4'9"
13	Bed Room-3	14'6"x11'0"
14	Balcony	6'0"x3'0"
15	Bathroom	5'0"x9'0"
16	Passage	14'0"x3'6"



CARPET AREA : 1225.00 SQ.FT.
 BUILTUP AREA : 1322.00 SQ.FT.





Tower A-B

Typical Floor Plan

01	Foyer	6'6"x4'0"
02	Pooja Area	6'10"x6'6"
03	Living/Dining	18'9"x14'7"
04	Balcony	17'6"x5'0"
04 A	Balcony	18'9"x2'0"
05	Kitchen	10'6"x8'6"
06	Store	6'6"x3'9"
07	Utility	6'0"x5'0"
08	Bathroom	4'6"x4'6"
09	Bed Room-1	11'0"x10'0"
10	Bed Room-2	11'0"x13'9"
11	Standing Balcony	6'9"x2'0"
12	Bathroom	7'9"x4'9"
13	Bed Room-3	14'6"x11'0"
14	Balcony	6'0"x3'0"
15	Bathroom	5'0"x9'0"
16	Passage	14'0"x3'6"



CARPET AREA : 1225.00 SQ.FT.
 BUILTUP AREA : 1322.00 SQ.FT.





A Magnificent Lifestyle Awaited

Specification



Structure

- Earthquake resistant structure



Wall Finish

- Interior : Smooth finish plaster with 2 coat putty and primer.
- Exterior : Double coat plaster with weather resistant paint.



Flooring

- Vitrified tiles as per architect's design
- 1200X600 (4ftX2ft) premium quality glazed vitrified tiles in living room, family sitting, kitchen, dining and 2 bedrooms.
- Wooden flooring tiles in master bedroom.



Electrical

- Branded modular switches
- Wires : RR Kabel / Finolex /Polycab, Anchor or equivalent
- T.V. point in living room and in 1 bedroom
- A.C. points in all bedrooms & Living Room



Kitchen

- Quartz platform with standard quality washbasin
- Tiles at dado till lintel level
- RO System Point



Doors & Windows

- Decorative main door with veneer finish
- Internal doors - laminated flush doors
- Anodized sliding with aluminum windows



Bathrooms

- Designer tiles upto lintel level as per architect's selection
- Branded sanitaryware Kohler/ CERA or equivalent
- Branded C.P. Fittings Kohler / Jaquar or equivalent
- Bathrooms with geyser points



Terrace

- China mosaic finish with waterproofing treatment.

Value Added Amenities

- Electric automation in living room
- Each tower with Separate AC Gym and Yoga Space
- Allotted 2 Car Parking
- Badminton Court
- GF lobby thumb impression security + camera
- Pressure pump
- Water Softener Plant
- Solar rooftop for common illumination & lift
- CCTV Surveillance
- Electric fencing on top of compound wall
- Video door screen in all flats
- Boom barrier at main gate

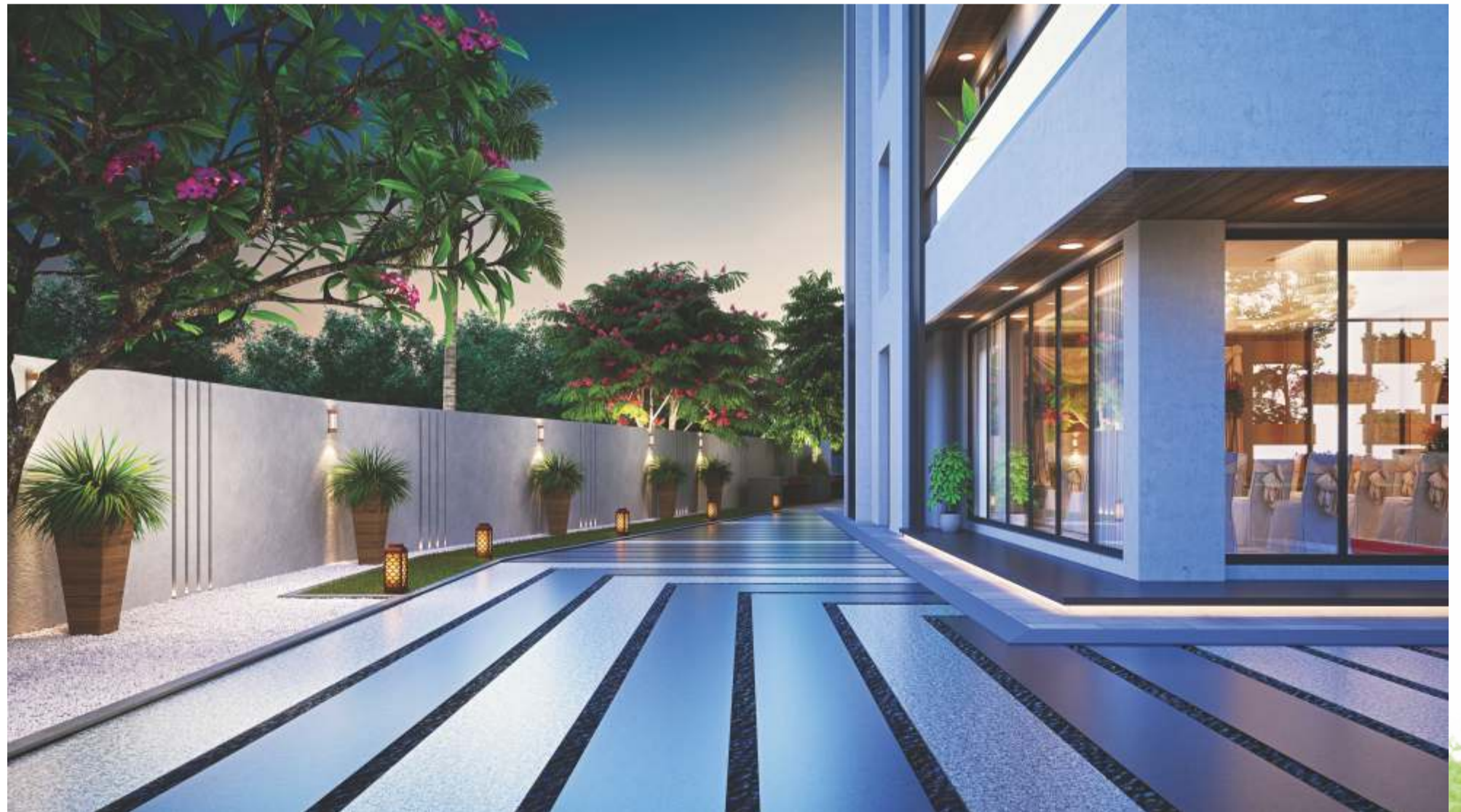
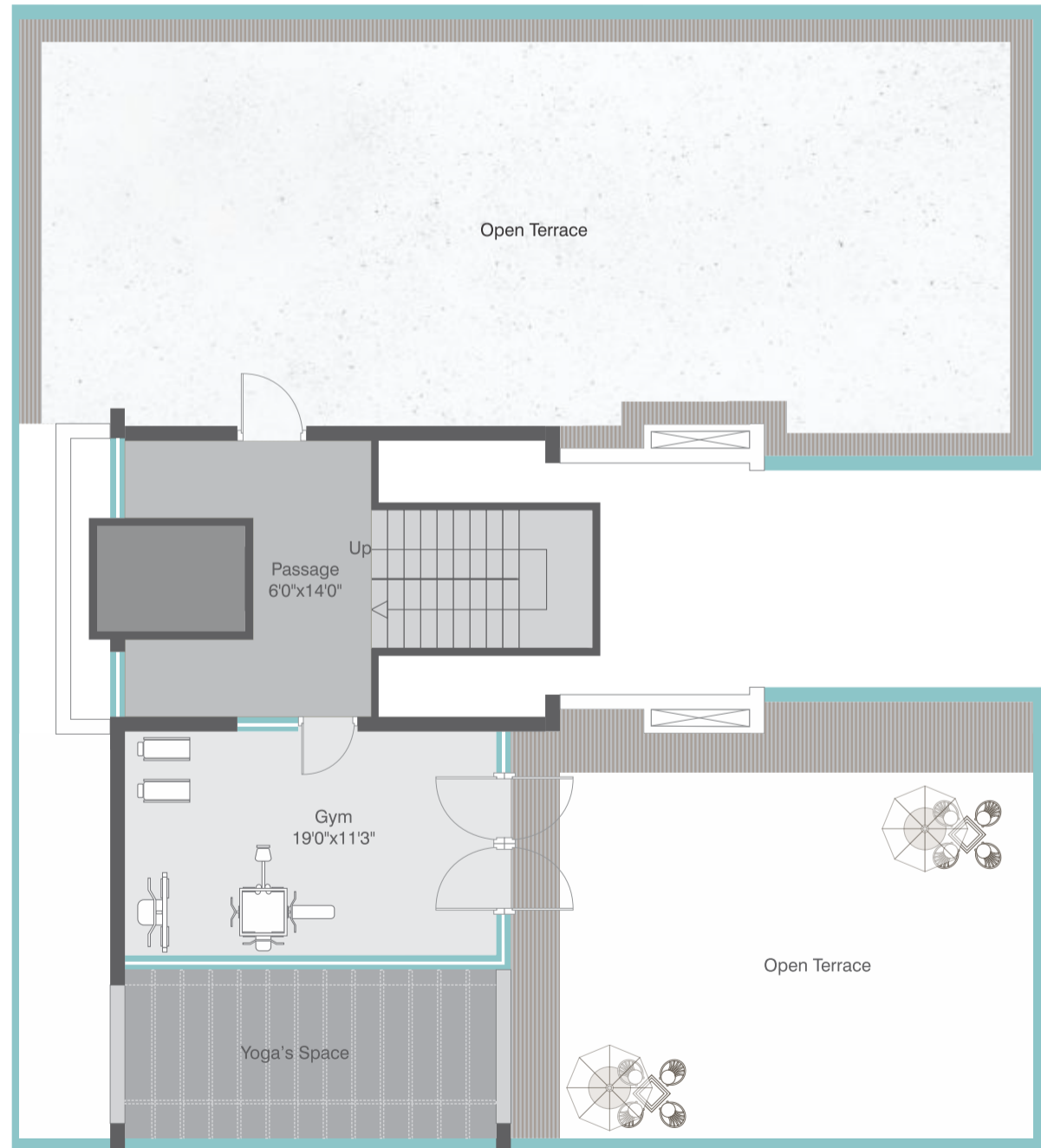
Premium lifestyle Amenities

- Only 2 Flats on each floor
- Decorative Entrance gate with Security Cabin
- Fire fighting system
- 24 hours water supply
- Children's Play area
- Club House / Multi-Purpose Hall
- Gazebo
- Branded Lift
- Rainwater Harvesting
- Level controller in water tanks to avoid wastage
- Most Luxurious & peaceful location
- Electric Backup Generator



Terrace

Floor Plan





Location

The *Time* is Our Side,
So Let's Explore!

Inviting to the safer homes with all major accessibility and amenities which perfectly captures the spirit. Marked by meticulousness of the art we call it Home For You!

Proximity

Yash Complex	1.50 Km
Osia Mall	400 Mtr.
Shoppings Schools Hospitals Multiplexes	1 to 1.50 Km

• Any plans, specification of information in this brochure cannot form part of an offer, contract or agreement. The developer retains the right to alter the specifications without consent to member. • This brochure does not contain any legal part as per rera.