



TRISHA 
SHIVANTA
 4 BHK LUXURIOUS APARTMENTS

a project by



ELEGANT | EXCLUSIVE | EXPANSIVE



Developers: Trisha Infrastructure Ltd.

Corp. Office: Trisha Infrastructure Limited
 62, Vishwas Colony, Jetalpur Road, Vadodara-390007.

Site: Trisha Shivanta, Near Braj Party Plot,
 Dabhoi-Waghodia Ring Road, Vadodara.

 **+91 90993 63333**

 www.trishainfrastructure.com

Architect: Foram Architect & Engineers
 Structural Consultant: Zarna Associates



SCAN FOR VIRTUAL
 TOUR OF 4BHK



HOMES THAT FEEL LIKE HEAVEN

Your dream homes at Trisha Shivanta are all that you wished for and more.

Set on the fast-growing **40 mtr Waghodiya-Dabhoi** Ring Road, these luxurious 4BHK apartments are designed to offer you a life of class and comfort.

The stunning elevation extends a warm welcome into an intimate community of limited-edition residences.

Expansive living spaces ensure natural light and fresh air along with panoramic views for a lifetime.

Add to it easy connectivity and what you have is an unmatched living experience.

HOMES
THAT IMPRESS
WITH STYLE



VALUE ADDITIONS



1 Allotted Car Park



High Speed Elevators with ARD - Premium Brand



24 Hours Power Back-up for Common Areas



Rain Water Harvesting



Anti-Termite Treatment



AC Points in Living Room & Dining and all Bedrooms



Designated Area for AC ODU (Flats & Commercial)



Security Cabin/Society Office



CCTV Secured Campus



Access Control System with Centralized Video Door Phone Security System



EV Charging Zone



12 Feet Height Grand AC Entrance Lobby



Fire Hydrant System



Adequate Power Load to each apartment



Main Gate with Automated Boom Barrier



**HOMES THAT PAMPER YOU
WITH SPACE AND SUNSHINE**

Walk into your beautiful homes, where the interiors are as spacious as they are inviting. Sunlight pours in, turning every room into a cheerful, cozy retreat for you.

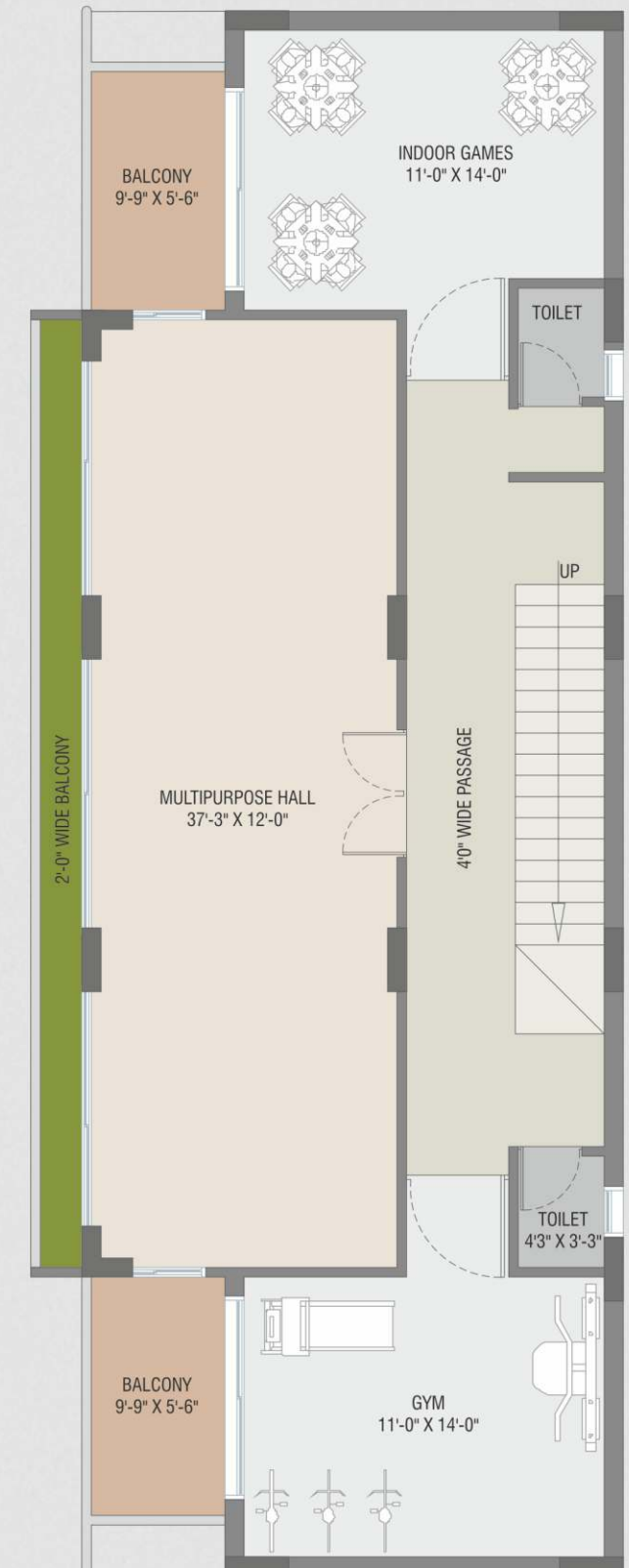


**HOMES THAT WRAP YOU
IN CALM AND COMFORT**

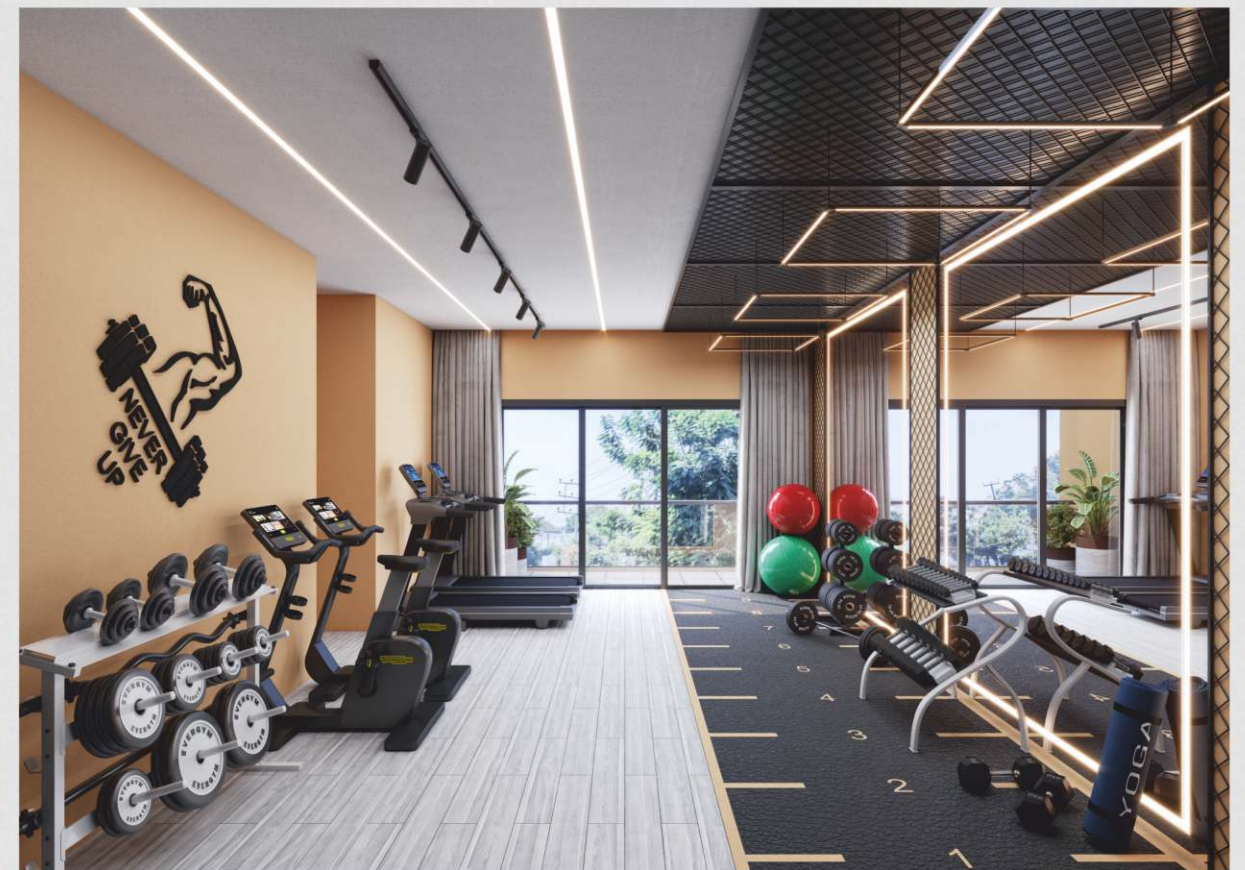
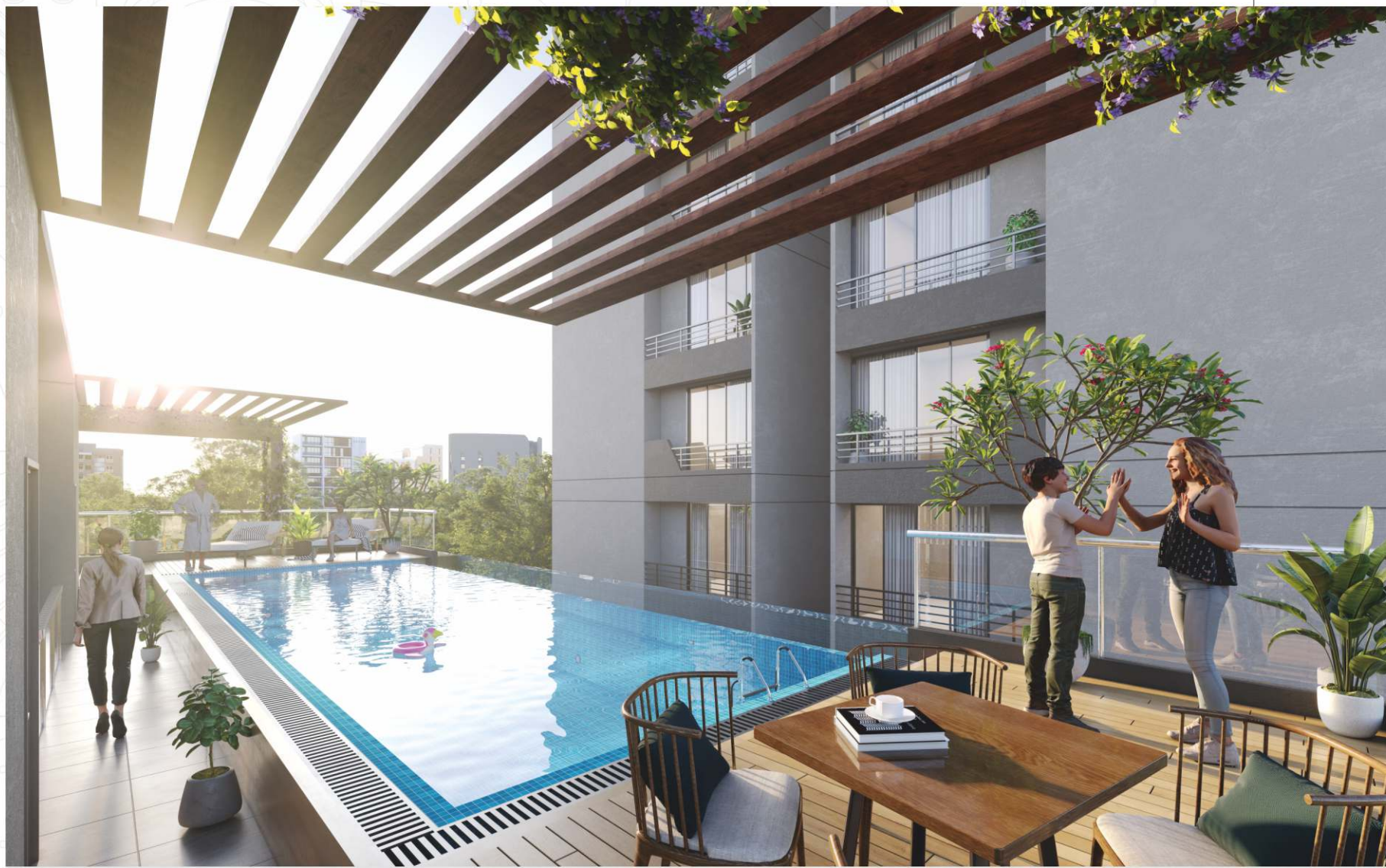
Enjoy blissful sleep every night in your bedrooms, a soothing space that feels perfect after a long day of work. Relax in style in your personal oasis of tranquility.



CLUBHOUSE FOR GOOD HEALTH AND GREAT MEMORIES



CLUB HOUSE FIRST FLOOR PLAN



LEISURE AMENITIES



WELL-EQUIPPED GYM



OPEN TO SKY POOL WITH POOL DECK



CHANGING ROOMS FOR GENTS/LADIES



INDOOR GAMES



LANDSCAPED GARDEN



MULTIPURPOSE HALL



YOGA DECK



PARTY DECK



MULTIFUNCTION ROOM



DEDICATED RECREATIONAL BUILDING

BASEMENT FLOOR PLAN



GROUND FLOOR PLAN



40 MT. WAGHODIA-DABHOIRING ROAD

40 MT. WAGHODIA-DABHOIRING ROAD

1ST FLOOR PLAN



2ND TO 13TH TYPICAL FLOOR PLAN



 **4 BHK UNIT PLAN**

CARPET AREA: 1421 SQ.FT.
S.B.A: 2200 SQ.FT.



ENTRY





SPECIFICATIONS



STRUCTURE

- Earthquake resistant RCC frame structure designed by approved Structural Consultant
- Light weight AAC Block Masonry walls



FLOORING

- 4 ft x 2 ft premium quality glazed vitrified tiles in Living, Dining, Bedrooms & Store
- Wooden laminate / Wooden finish vitrified tiles in Master Bedroom
- Anti-skid ceramic tiles in Balconies, Bath & Wash



KITCHEN

- Mirror finished Granite counter top
- Premium Satin finish SS Sink – Nirali or equivalent with Swivel tap
- Premium quality ceramic tiles Dado up to Lintel Level
- Kota stone shelves in storeroom



DOORS & WINDOWS

- Main Door – veneer finished flush door
- Granite frame for Windows and Doors.
- Internal doors with laminate finish
- Premium quality full height aluminium sliding windows – Domal or equivalent

ELECTRICAL

- Branded modular switches – Legrand, Schneider or equivalent
- Branded ISI 3 phase concealed copper wiring – RR, Polycab, Havells or equivalent
- Internet point for wi-fi connectivity with Router provisioning



BATHROOMS

- Premium quality ceramic tiles dado up to Lintel Level.
- Designer Bathrooms with premium quality bath fittings and sanitary wares - Kohler or equivalent
- CPVC/UPVC Water Supply Pipes – Astral/Supreme or equivalent
- Hot Water Centralized Heat Pump Provision within each Flat
- Granite / Composite Marble Counter in all attached bathrooms



CEILING

- False ceiling in all balconies



WALL FINISH

- Single coat plaster with double coat putty finish on internal walls
- Rustic texture finished exterior paint – Apex Ultima



KEY PLAN



Google Co-ordinates
22°17'01.4"N 73°13'58.2"E



LOCATION

Disclaimer: - The information contained in this brochure is subject to change as may be approved by the competent authorities and cannot form part of any form or contract. All plans are subject to any amendments approved by the competent authorities. The areas are indicative only. The measurements indicated in the plan may vary at the time of construction. All landscaping is conceptual and shall be as per architect's design. Illustrations in this brochure are artist impressions and serve only to give an approximate idea of the project. While every reasonable care has been taken in providing this information, the developers cannot be held responsible for any inaccuracy. The developers reserve all the rights to make any changes as may be necessitated from time to time in the layout, building plan and specifications. All images used in this document are for representation only, actual may vary.

RERA No: PR/GJ/VADODARAVADODARA/Others/RAA12821/290124/311228
RERA Website: gujrera.gujarat.gov.in



"Trisha Group" was established in 2001 by the Late Shri R.B. Gupta, a first generation entrepreneur, with a vision to enter into the core business of construction and property development.

Shri Vikram Gupta, Director and Chairperson of Trisha Group of Companies succeeded his father, to carry forward his dream and vision in an aggressive yet sustainable manner.

The company is providing state-of-art standardized quality construction and timely execution. Its focus on commitment towards quality, integrity and investment in its employees has led the company to its success.



Trisha Space



Trisha Square 1



Trisha Square 2



Trisha Lotus Residency



Trisha Rudraksh



Trisha Rudraksh 2