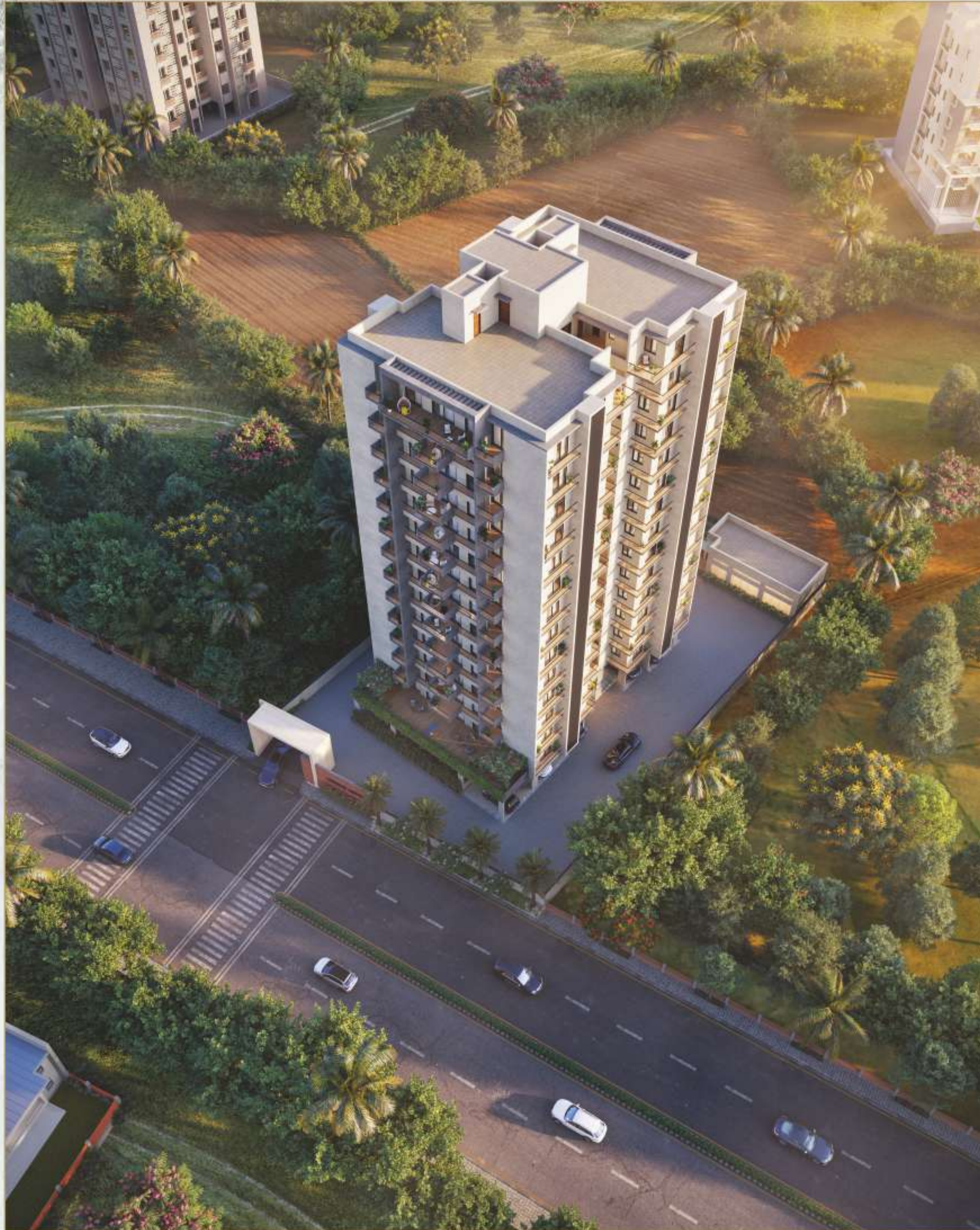


EXCEPTIONAL
LIVING



UNIQUE
ASPIRE

4 BHK LUXURIOUS FLATS



PROJECT SYNOPSIS



4 BHK LUXURIOUS FLATS

Everyone aspires to live a lavish lifestyle and there are three main aspects to fulfill it, location, comfort and amenities & Unique Aspire lives up to it all. Coming up at Rajkot's most developed 2nd 150 Feet Ring Road, Unique Aspire will feature limited edition 4 BHK apartments with all the futuristic amenities to ensure leisure to the residents.



HIGH Profile Planning

Once you step in, you won't be able to judge which is the living room and which one is a bedroom! The plan seems so visionary that you will witness the utmost grace of space wherever you go.





HIGH Volume Ventilation

People are getting attracted to the newly developing Rajkot because of two key aspects. One is peace and the other is roominess. Being open on all four sides, Unique Aspire ensures a high volume of natural light coming in and a cross-ventilation advantage.



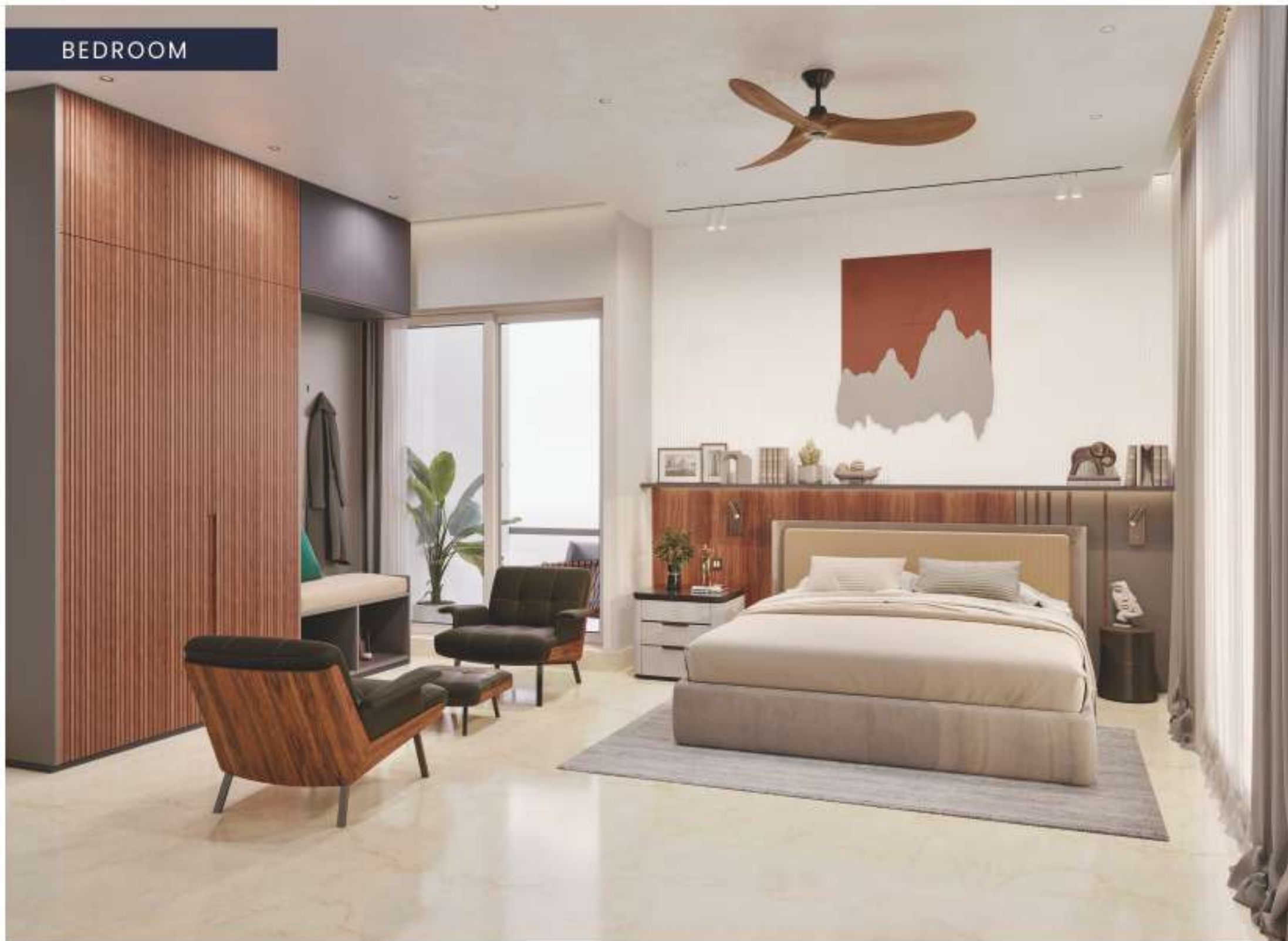
LIVING ROOM



KITCHEN



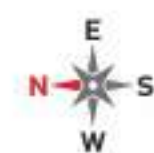
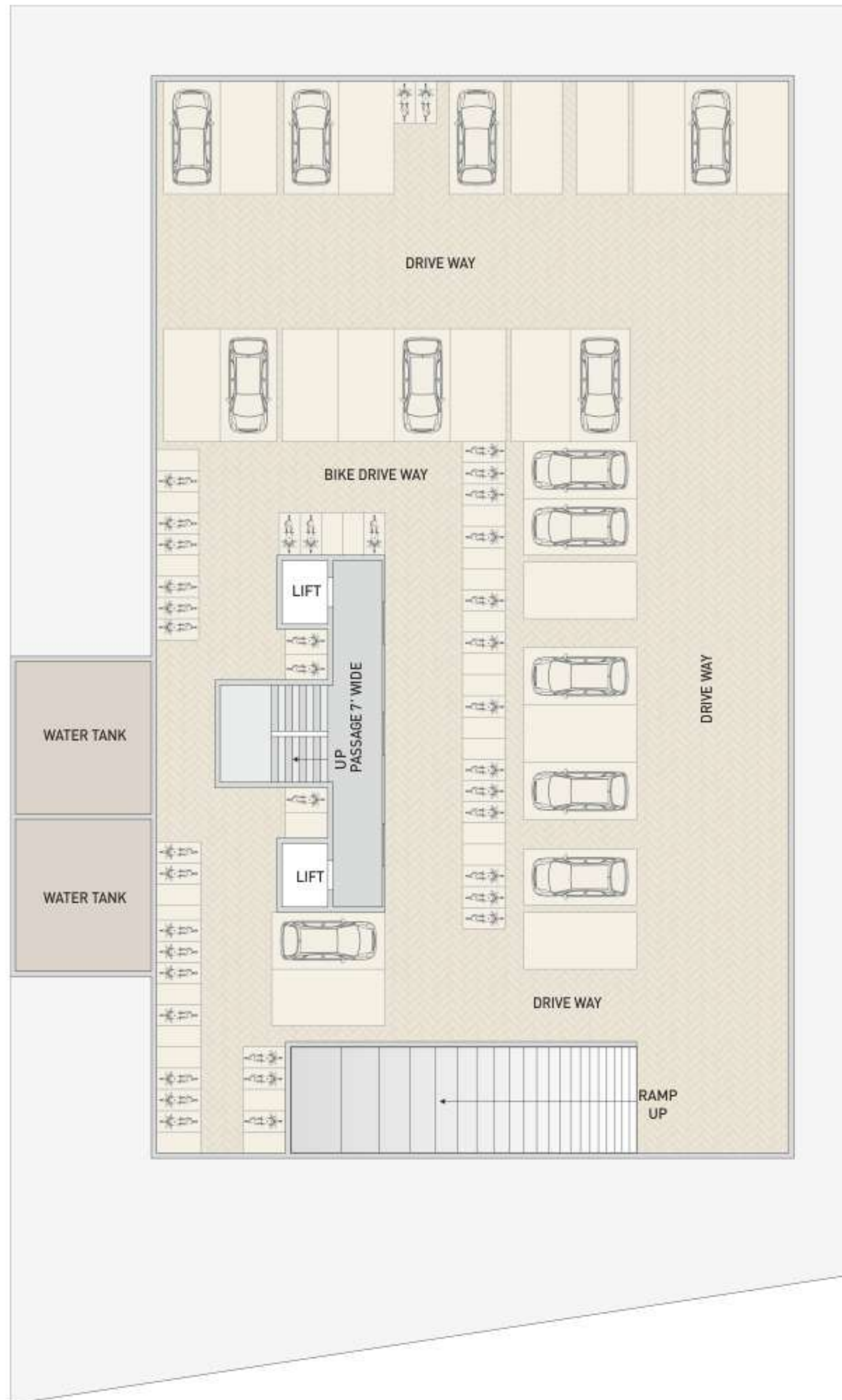
BEDROOM



LIVING ROOM

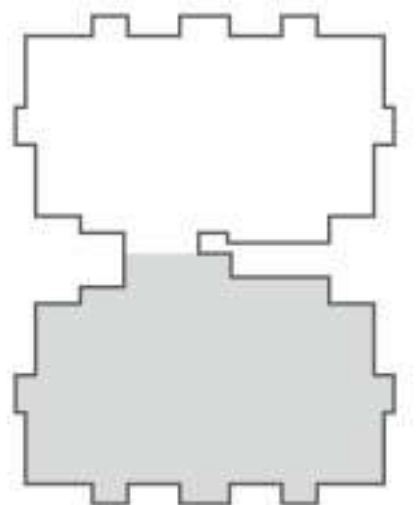


**BASEMENT
PLAN**



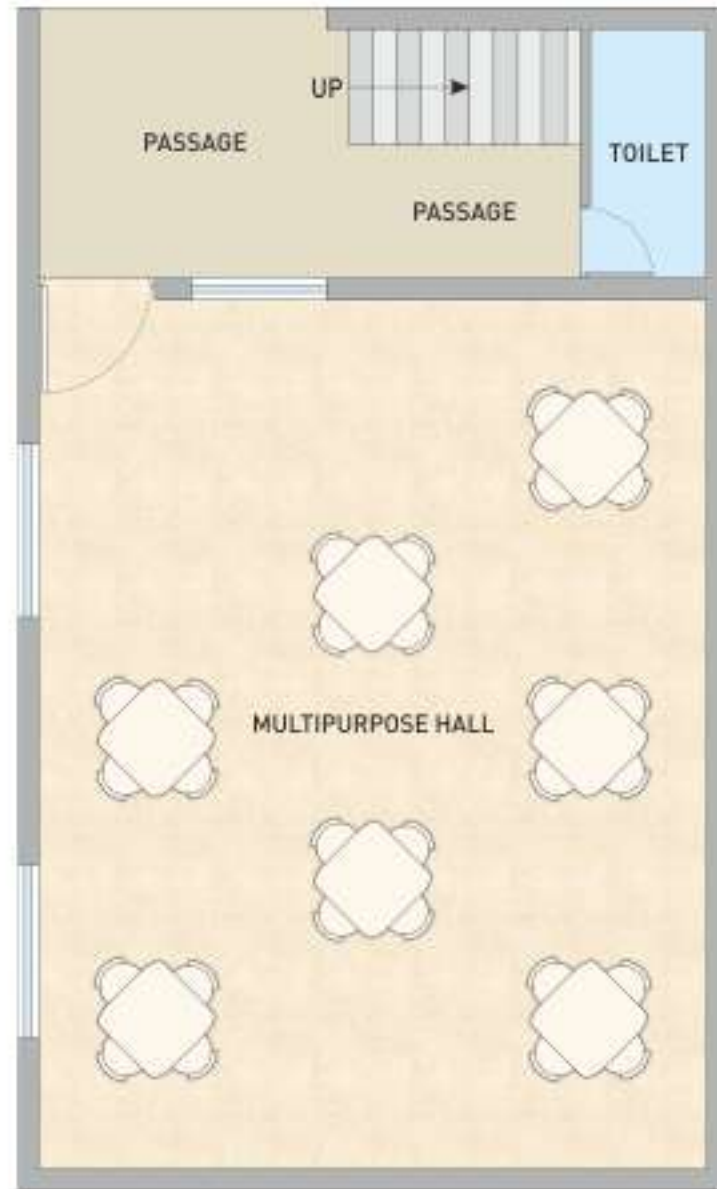
**GROUND
FLOOR PLAN**



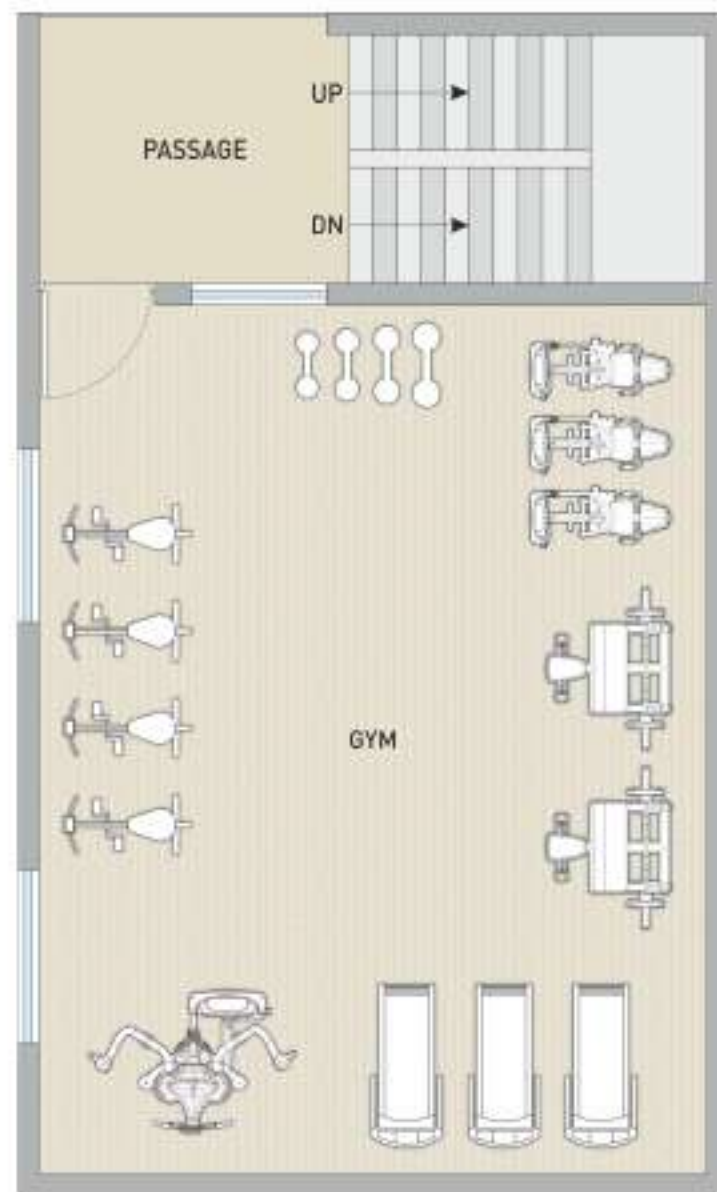




GROUND FLOOR PLAN



1ST FLOOR PLAN



Gazebo



Senior Citizen's
Seat Out



Multipurpose Hall



Gym



Security Office



CCTV Camera



Indoor Games



Children Play Area



Video Door Phone



Reception Foyer



Allotted
Car Parking



DG Set for
Power Backup



Landscape
Garden



Outdoor
Games



Rain Water
Harvesting



HIGHLIGHTING SPECIFICATIONS

FLOORING

- Elegant flooring in reception area. 800 x 1600 mm premium vitrified tiles flooring.

WINDOWS

- Standard sliding aluminium windows with anodized or powder coating finish granite / full body window sills.

DOORS

- Decorative main door. We do not provide any internal Doors.

SECURITY

- Entire campus covered with CCTV surveillance.
- Video door phone system for each flat.

KITCHEN / STORE

- Premium vitrified tiles for flooring. Natural granite / full body platform.
- Dedo : Premium ceramic tiles shelf (DP kota shelf).

WASH AREA

- Kota stone or equivalent flooring. Dedo: Premium ceramic or vitrified tiles provision for RO plant and washing machine

BALCONY

- Rustic tiles or equivalent.

PAINT

- Putty finish for internal walls and weather proof texture plaster with acrylic paints for external walls.

ELECTRIFICATION

- 3 Phase power connection concealed ISI copper wiring with modular switches appropriate earthing in electric supply distributor board with MCB or ELCB for maximum safety.

TOILETS

- Branded sanitary ware and CP fittings all bathrooms finished with superior quality ceramic tiles.

POWER

- DG backup for elevators, water pumps and common area lighting.

FIRE SAFETY

- Higher quality fire safety system in building as per national regulations.

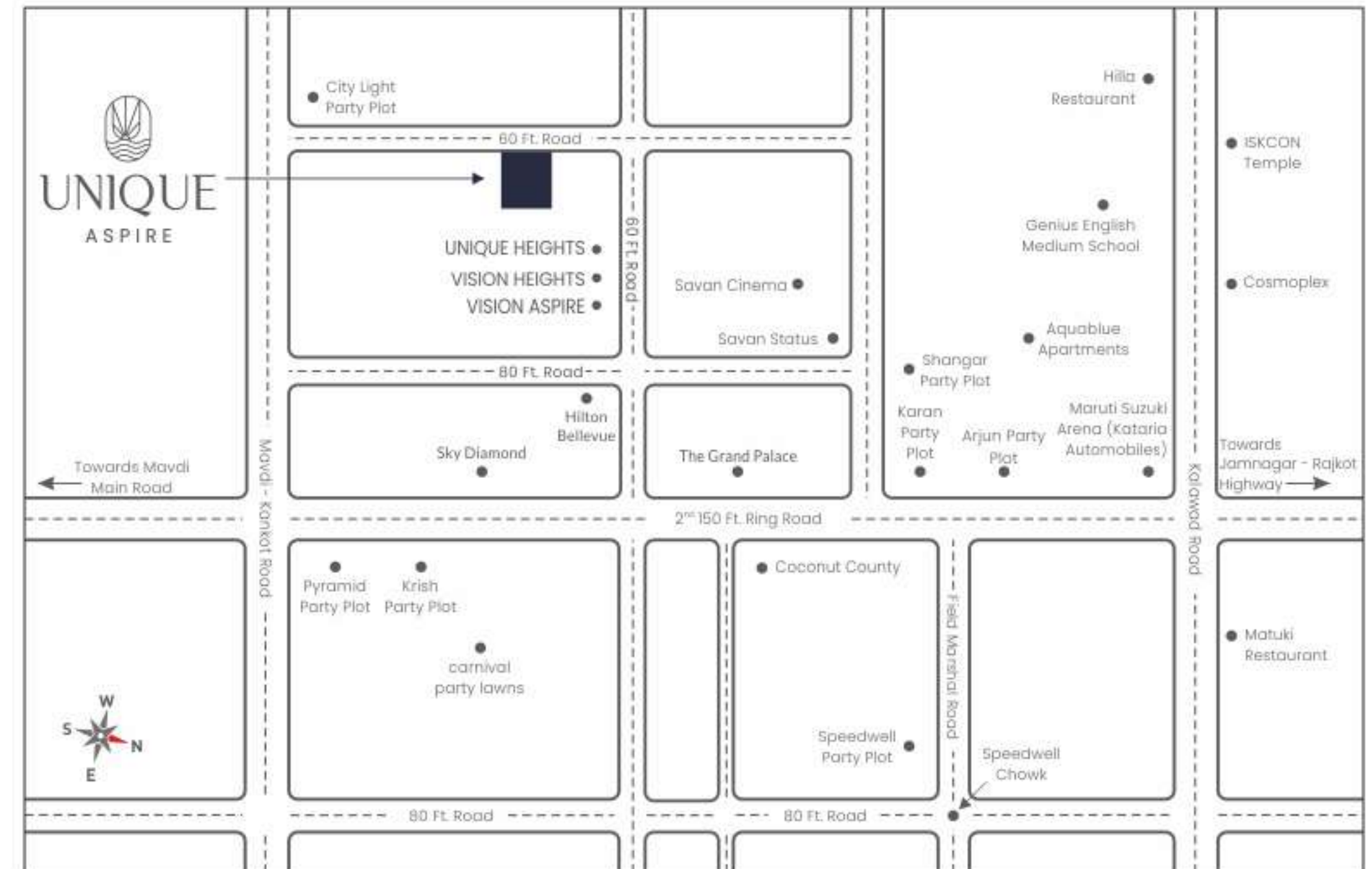
RERA NO. PR/GJ/RAJKOT/RAJKOT/Rajkot Municipal Coporation/RAA12732/030124/311226 | Website : www.gujrera.gujarat.gov.in

LEGAL DISCLAIMER: All the elements, objects, treatment, materials, equipment & colour scheme are artisan's impression & purely for presentation purpose. By no means it will form a part of the amenities, features or specifications of our final product.

NOTE: All rights for alteration, modification & development in design or specifications by architects & / or developer shall be binding to all the members • Completion certificates as per RMC rules, clear title document will be provided by promoters for loan purpose. This brochure is for private circulation only. By no means it will form part of any legal contract.

• Stamp duty, Registration charges, Legal charges, PGVCL charges, Society maintenance deposit, etc. shall be borne by the purchaser. • VAT, TDS, TCS, GST & / or any other taxes levied in future will be borne by the purchaser as applicable. • Any additional charges or duties levied by the Government / Local Authorities during or after completion of the scheme shall be borne by the purchaser. • In the interest of continual developments in design & quality of construction, the developer reserves all rights to make any changes in the scheme including and not limited to technical specifications, design, planning, layout & all purchasers shall abide by such changes. • Changes/alteration of any nature including elevation, exterior colour scheme, balcony grill or any other changes affecting the overall design concept & outlook of the scheme are strictly NOT PERMITTED to customer during or after the completion of the scheme. • Any RCC member (Beam, Column, Slab) must not be damaged during your interior work. • Low-voltage cables such as Telephone, TV and internet cables shall be strictly laid as per consultant's service. No wire/cables/conduits units shall be laid or installed such that they form hanging formation on the building exterior faces. • Common passages / landscaped areas are not allowed to be used for personal purpose. • AC outdoor units space is already designated in consultation with HVAC Consultant. It is planned according to design, specification/elevation, available space, etc. No changes in location can be made on personal basis. Subject to Rajkot Jurisdiction.

HIGHLY Evolved LOCATION



Developers :



Booking Contact

90000 18518

Yash Sureja : 94088 83070
Kiritbhai Sureja : 94262 50812

Nigambhai Sureja : 94277 38863
Shantibhai Desai : 94272 55669

Architect
Manish Patel Architects

Structure Engineer
Ashwin Lodhiya



[Click Here To Contact](#)



[Click Here For Location](#)



UNIQUE
ASPIRE

Booking Contact
90000 18518

Opp. Aaradhana Party Plot, B/h Sky Diamond,
New 150 Feet Ring Road, Rajkot.