

IDEAL TO INDULGE



VISION
ASPIRE

4 BHK LUXURIOUS FLATS

PROJECT SUMMARY



What's ideal in the present? One which is visionary for the future and you would find everything ideal to indulge in. Be it location, planning or amenities, each attribute of Vision Aspire is so ideal that one would have aspired to reside.





LOCATION WILL INDULGE YOU

No one would have noticed such a unique migration within the city. As almost every alternative home is migrating towards the newly developing 2nd 150 Feet Ring Road, Vision Aspire would be just 500m away from the main road.

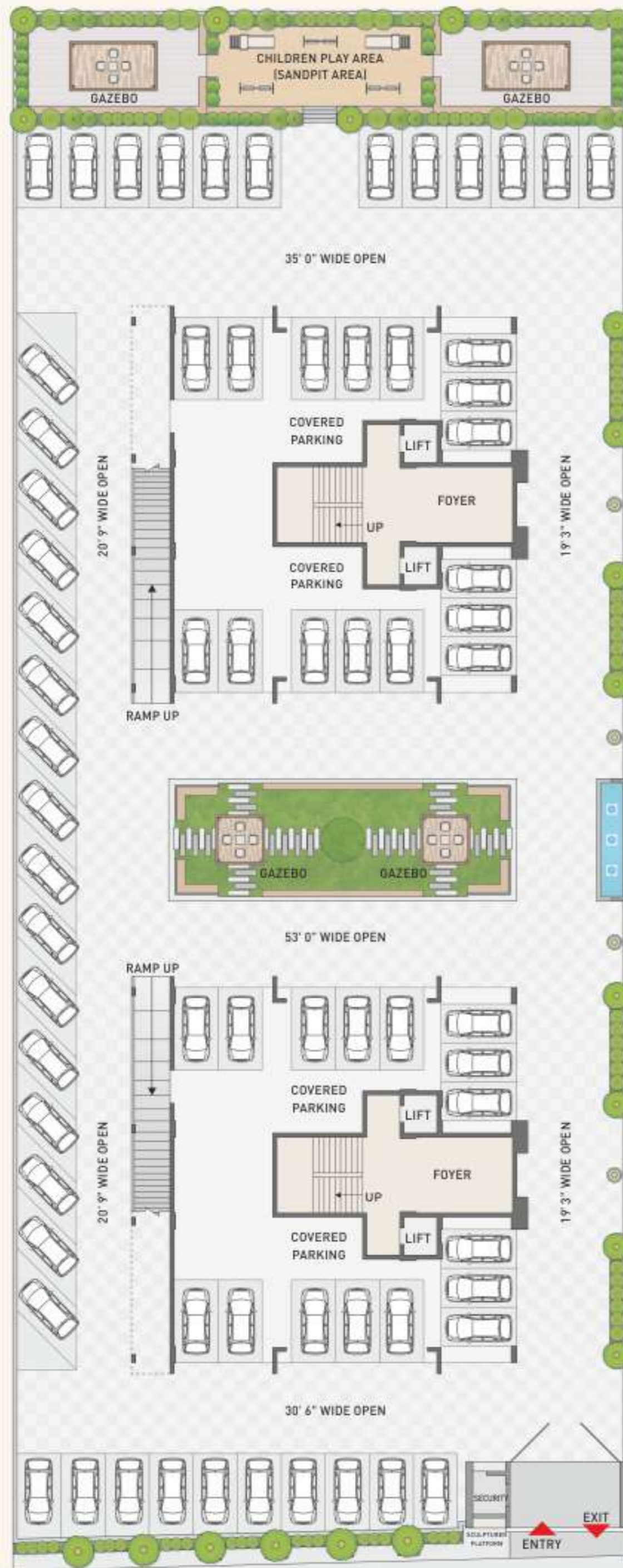




VENTILATION WILL INDULGE YOU

The planning sincerely justifies the name-Vision Aspire. Each ideal attribute, you name it, Vision Aspire delivers it. Be it space, be it ventilation, be it comfort or be it privacy. Vision Aspire is an ideal example of a modern abode with guaranteed bliss.





18.00 MT. WIDE PROP. T.P.S. ROAD



18.00 MT. WIDE PROP. T.P.S. ROAD



TYPICAL FLOOR PLAN
3RD TO 13TH FLOOR



SECOND TOWER

FIRST TOWER

18.00 MT. WIDE PROP. T.P.S. ROAD



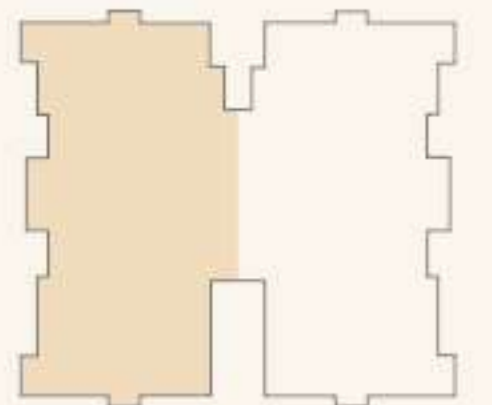
TYPICAL FLOOR PLAN
3RD TO 13TH FLOOR



301 TO 1301
C.A. 1755 SQ.FT.

302 TO 1302
C.A. 1755 SQ.FT.





AMENITIES



SPECIFICATIONS

FLOORING

Elegant flooring in reception area. Premium vitrified tiles flooring in flats.

WINDOWS

Standard sliding aluminium windows with anodized or powder coating finish granite equivalent window sills.

DOORS

Decorative main door. We do not provide any internal doors.

SECURITY

Entire campus covered with CCTV surveillance.

KITCHEN/STORE

Premium vitrified tiles for flooring. Natural granite/full body platform.

WASH AREA

Kota stone or equivalent flooring. Dado : premium ceramic or vitrified tiles provision for ro plant and washing machine.

BALCONY

Rustic tiles or equivalent tiles.

PAINT

Internal walls finished with wall putty acrylic emulsion paint.

ELECTRIFICATION

3 phase power connection concealed ISI copper wiring with modular switches. Appropriate earthing in electric supply distributor board with MCB or ELCB for maximum safety.

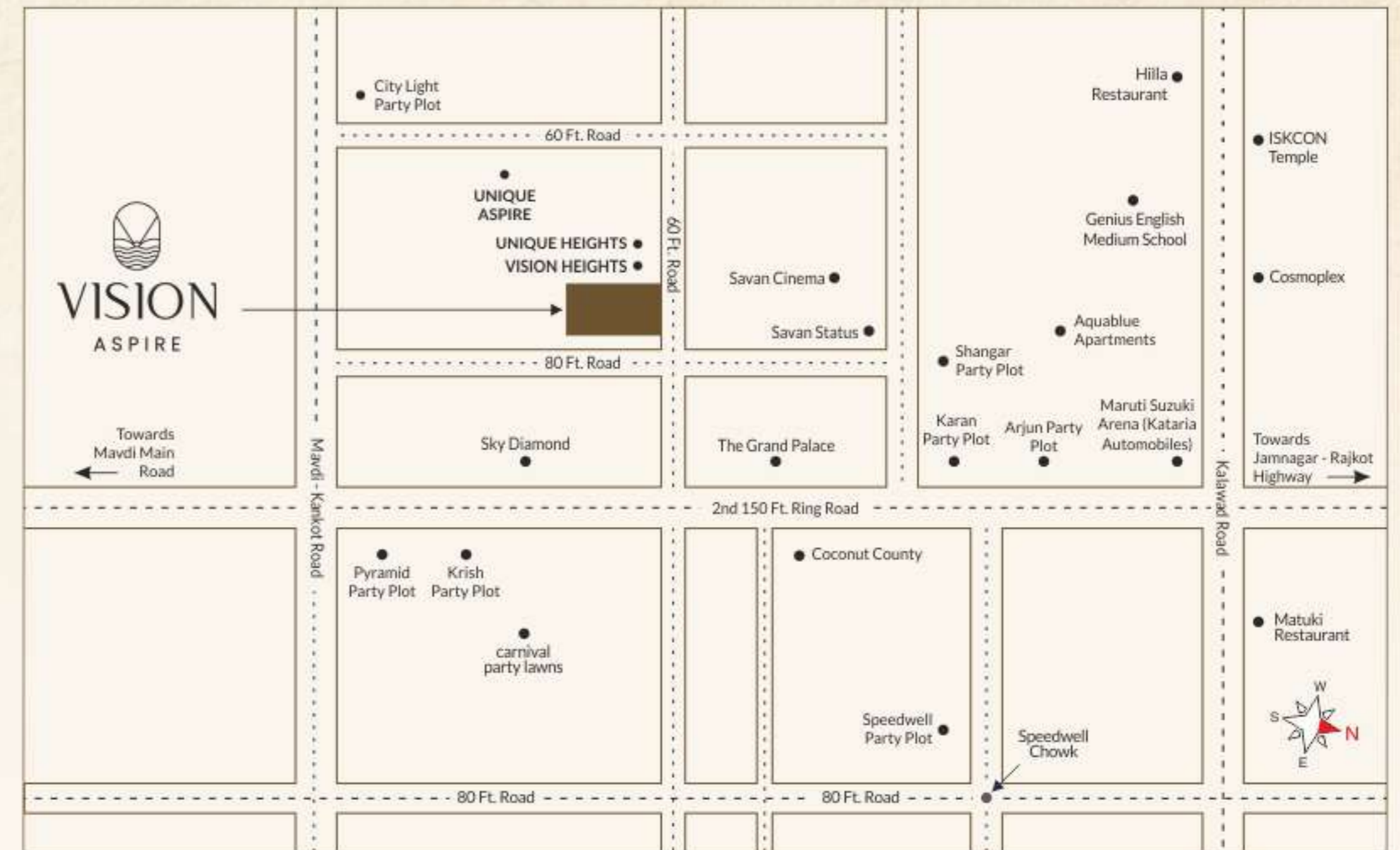
TOILETS

Branded sanitary ware and CP fittings. All bathrooms finished with superior quality ceramic tiles.

POWER

DG backup for elevators, water pumps and common area lighting.

KEY PLAN



Rera No. PR/GJ/RAJKOT/RAJKOT/Others/RAA08828/270721, Website : gujrera.gujarat.gov.in

LEGAL DISCLAIMER: All the elements, objects, treatment, materials, equipment & colour scheme are artisan's impression & purely for presentation purpose. By no means it will form a part of the amenities, features or specifications of our final product.

NOTE: All rights for alteration, modification & development in design or specifications by architects & / or developer shall be binding to all the members • Completion certificates as per RMC rules, clear title document will be provided by promoters for loan purpose. This brochure is for private circulation only. By no means it will form part of any legal contract.

• Stamp duty, Registration charges, Legal charges, PGVCL charges, Society maintenance deposit, etc. shall be borne by the purchaser. • VAT, TDS, TCS, GST & / or any other taxes levied in future will be borne by the purchaser as applicable. • Any additional charges or duties levied by the Government / Local Authorities during or after completion of the scheme shall be borne by the purchaser. • In the interest of continual developments in design & quality of construction, the developer reserves all rights to make any changes in the scheme including and not limited to technical specifications, design, planning, layout & all purchasers shall abide by such changes. • Changes/alteration of any nature including elevation, exterior colour scheme, balcony grill or any other changes affecting the overall design concept & outlook of the scheme are strictly NOT PERMITTED to customer during or after the completion of the scheme. • Any RCC member (Beam, Column, Slab) must not be damaged during your interior work. • Low-voltage cables such as Telephone, TV and internet cables shall be strictly laid as per consultant's service. No wire/cables/conduits units shall be laid or installed such that they form hanging formation on the building exterior faces. • Common passages / landscaped areas are not allowed to be used for personal purpose. • AC outdoor units space is already designated in consultation with HVAC Consultant. It is planned according to design specification/elevation, available space, etc. No changes in location can be made on personal basis. Subject to Rajkot Jurisdiction.



Click Here To Contact



Click Here For Location

Developers



Yash Sureja
94088 83070

Kiritbhai Sureja
94262 50812

Nigambhai Sureja
94277 38863

Shantibhai Desai
94272 55669

Architect
Manish Patel Architects

Structure Engineer
Ashwin Lodhiya

Booking Contact
90000 18518



Opp. Aaradhana Party Plot, B/h Sky Diamond,
New 150 Feet Ring Road, Rajkot.