

ॐ

EMPOWERING THE CORPORATE WORLD



[www.decoragroup.com](http://www.decoragroup.com)



[www.eyecodeesign.in](http://www.eyecodeesign.in)





THE FUTURISTIC  
BUSINESS HUB AWAITS YOU

OM | DECORA  
**SQUARE**  
CITY'S NEW LANDMARK

Om Decora 9 Square is a fantastic commercial landmark that completely redefines the benchmarks for architecture and business amenities in the corporate world. It's a wonderful hub designed for the visionary business leaders who dare to dream big.

#

65

OM DECORA

9



A GLORIOUS  
ELEVATION FOR  
A PROFESSIONAL  
IMPRESS



Arrow

GAS

JACK & JONES

BREITLING

ARMANI

VERO MODA

Vanheusen









Fcuk

uni

#



PROJECT HIGHLIGHTS

-  Double Basement Parking
-  Sewage Treatment Plant, Dual Plumbing System
-  Landmark Private Terraces for The Front Elevation Offices
-  Approx 14 Ft. Wide Grand Entrance Lobby at All Floor
-  Premium Glazing, Stone Cladding and Exposed R.C.C. Facade
-  Double Height Centrally Air Conditioned Reception & Waiting Area
-  High Quality & Hi-speed Mitsubishi Elevators
-  100% Power Back-up for Common Area



NOTHING BUT  
THE BEST FOR YOUR  
BUSINESS

You've worked really hard to build your brand. Now, it's time that your brand gets an equally impressive business address. Make a smart business decision by investing in Om Decora 9 Square. It is destined to become the profit center of the city.





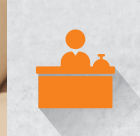


AN INSPIRING  
SPACE TO BOOST YOUR  
PRODUCTIVITY

This brilliantly designed architecture features tranquil spaces where you can relax and rejuvenate yourself to face the challenges of the corporate world.







ENTRANCE FOYER



PRIVATE CONFERENCE



EMBRACE THE FABULOUS **BUSINESS AMENITIES**



#

PRIVATE COFFEE SHOP



PRIVATE GYMNASIUM



#

PRIVATE RESTAURANT





# LAYOUT PLAN

## LEGENDS

- |                                |                          |
|--------------------------------|--------------------------|
| 01) ENTRANCE GATE              | 08) WATER BODY           |
| 02) RAMP                       | 09) GARDEN               |
| 03) VISITOR'S PARKING          | 10) COFFEE SHOP          |
| 04) DRIVER'S SITTING           | 11) RESTAURANT           |
| 05) RECEPTION & WAITING LOUNGE | 12) GENTS TOILET         |
| 06) PRINTING & STATIONARY      | 13) LADIES TOILET        |
| 07) ELECTRICAL ROOM            | 14) PRIVATE ACTIVITY     |
|                                | 15) SPACE FOR SUBSTATION |







TOWER-A

1ST \*

FLOOR PLAN

1ST LEVEL



TOWER-A

2ND \*

FLOOR PLAN



TOWER-A

1ST \*

FLOOR PLAN

2ND LEVEL







TOWER-A  
**3RD\***  
 FLOOR PLAN



TOWER-A  
**5TH\***  
 FLOOR PLAN



TOWER-A  
**4TH\***  
 FLOOR PLAN



TOWER-A  
**6TH\***  
 FLOOR PLAN







TOWER-A

**7TH\***  
FLOOR PLAN



TOWER-A

**9TH\***  
FLOOR PLAN



TOWER-A

**8TH\***  
FLOOR PLAN

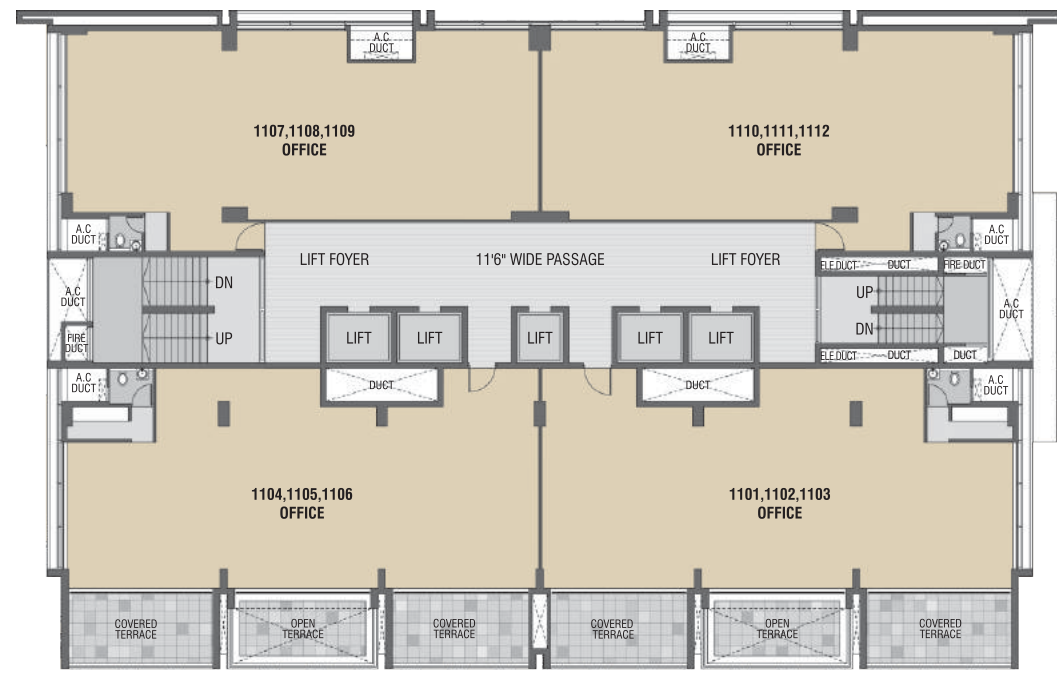


TOWER-A

**10TH\***  
FLOOR PLAN







TOWER-A

**11TH\***

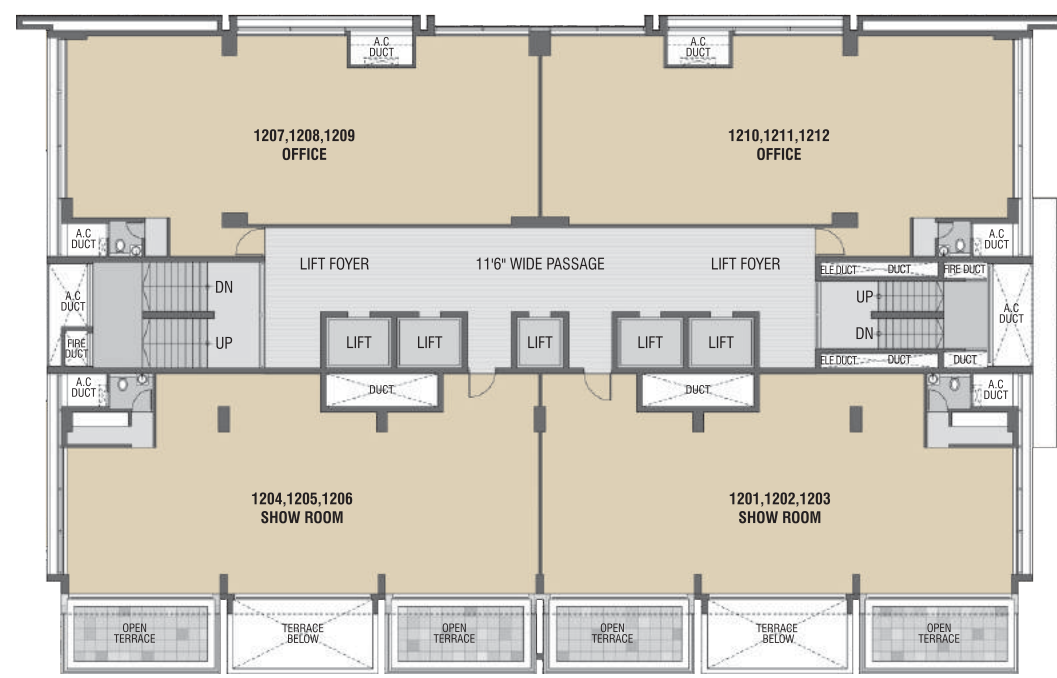
FLOOR PLAN



TOWER-B

**1ST\***

FLOOR PLAN



TOWER-A

**12TH\***

FLOOR PLAN



TOWER-B

**2ND TO 14TH\***

FLOOR PLAN







Prime location, thoughtful design, splendid elevation, best-in-class amenities and much more. It's the finest business destination of the city where you have everything at your disposal to write a great success story.

## THE PERFECT ADDRESS FOR YOUR BUSINESS EMPIRE







EMBARK ON  
YOUR JOURNEY  
**TO SUCCESS**  
WITH US



## SPECIFICATION



### BUILDING STRUCTURE

- Earthquake resistant R.C.C. frame structure



### FLOORING

- Premium vitrified tiles flooring



### ELEVATION

- Fabulous building elevation can lead to excellent business status



### SECURITY

- All common area under CCTV surveillance



### WINDOWS

- Anodized aluminium with 5mm toughened glass



### ELECTRIFICATION

- 3 phase power connection
- Concealed ISI copper wiring with modular switches
- MCB distribution panel
- DG Set for common area



### S.T.P.

- Sewage treatment plant system
- Dual plumbing system



### TOILETS

- Premium ceramic tiles upto lintel level
- CP Brass fitting-Jaquar / equivalent



### FIRE SAFETY

- Fire hydrant and fire extinguisher provided in common area



Site Address  
**OM DECORA 9 SQUARE,**  
 Nana Mava Main Road,  
 Near Marwadi, 150 Ft. Ring Road, Rajkot



RERA NO. : PR/GJ/RAJKOT/RAJKOT/Others/CAA03530/290918



Architect  
 Apurva Amin

Structural Engineer  
 Ducon Consultants

MEP Consultant  
 Jhaveri Associates

Legal Advisor  
 N.J. Patel

Contact :  
**97271 99988, 98254 83986**  
**84690 99999, 99257 00099**



LEGAL DISCLAIMER: \* All furniture / objects shown in the plan are for presentation & understanding purpose only. By no means, it will form a part of final deliverable product.

# All the elements, objects, treatments, materials, equipment & color scheme are artisan's impression & purely for presentation purpose. By no means it will form a part of the amenities, features or specification of our final product.

NOTE: All rights for alteration / modification & development in design or specifications by architects & / or developer shall be binding to all the members. • B.U.C. (Building Use Certificate) as per RUDA rules, clear title for loan purpose. This brochure is for private circulation only. By no means it will form part of any legal contract.

• Stamp duty, Registration charges, Legal charges, PGVCL / RUDA charges, Society maintenance deposit etc. shall be borne by the purchaser. • VAT, Service Tax, TDS, TCS, GST & or any other taxes levied in future will be borne by the purchaser as applicable. • Any additional charges or duties levied by the Government / Local Authorities during or after completion of the scheme shall be borne by the purchaser. • In the interest of continual developments in design & quality of construction, the developer reserves all rights to make any changes in the scheme including and not limited to technical specifications, design, planning, layout & all purchasers shall abide by such changes. • Changes/alteration of any nature including elevation, exterior color scheme, balcony grill or any other changes affecting the overall design concept & outlook of the scheme are strictly NOT PERMITTED during or after the completion of the scheme. • Any RCC member (Beam, Column, Slab) must not be damaged during your interior work. • Low-voltage cables such as telephone, TV and internet cables shall be strictly laid as per consultant's service drawings with prior consent of Developer / Builder's office. No wire/cables/conduits units shall be laid or installed such that they form hanging formation on the building exterior faces. • Common passages / landscaped areas are not allowed to be used for personal purpose.