



1 & 2 BHK FLATS



CONVENIENT LOCATION, QUALITY CONSTRUCTION, THOUGHTFUL AMENITIES, AFFORDABLE LUXURY

Rang City Flats brings to you elegantly designed 1 & 2 BHK flats set in an exclusive residential campus. Offering a good quality infrastructure at an affordable price is what we strive to achieve.

Rang City Flats offer a great lifestyle, good recreational facilities, with a good finish, spacious and well planned campus, but at a very attractive price. The flats have been such that they are spacious and have ample natural light and aeration.

The project comes for a reputed name in real estate development in Bharuch. The realtors have successfully completed numerous prestigious project in the region- on time and with satisfactory quality.





AMENITIES

- Common Landscaped Garden with children's play area
- Compound wall and Common Compound gates of the project is as per architect's design
- Trimix internal roads with street light
- Common bore-well for water supply to society
- Decorative paving in Common area

SPECIFICATIONS

Structure:

RCC column beam frame structure as per structure design

Wall Finish:

Inside surface finished with putty only. Outside Surface to be Painted with Acrylic Paint.

Flooring:

Vitrified Tiles in all rooms.

Kitchen:

Granite Platform with S.S. Sink glazed tiles dado upto Lintel level.

Doors:

All doors will be flush doors



Windows:

Colour coated Aluminum window.

Toilets:

Ceramic Tiles flooring & Glazed tiles dado upto lintel level.

Plumbing:

Internal Plumbing will be concealed PVC pipes with good quality CP fittings.

Electrification:

Concealed electrification with ISI marked cable and modular type switches.

Water Facility:

Common overhead tank for water supply.

Ground Floor Plan



Typical Floor Plan

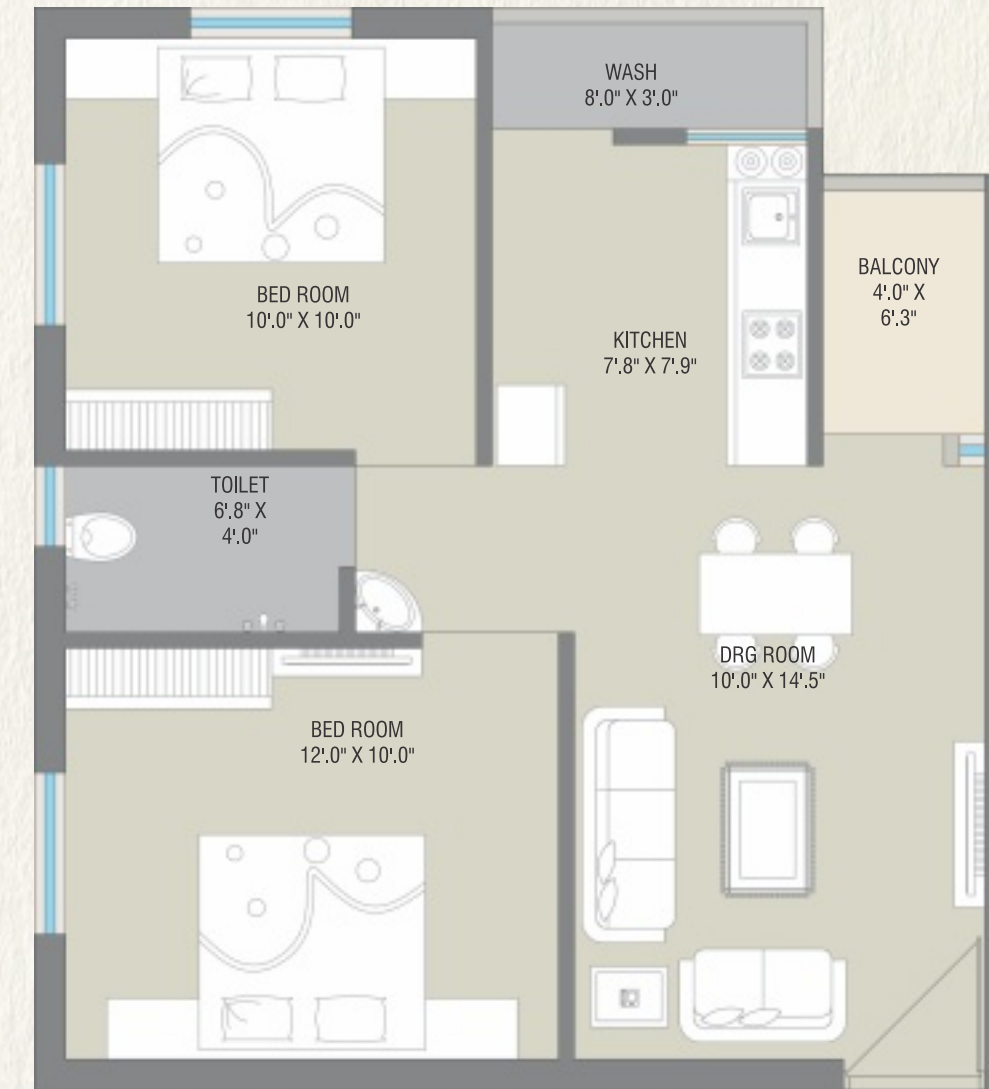


Block -A1
Typical Floor Plan



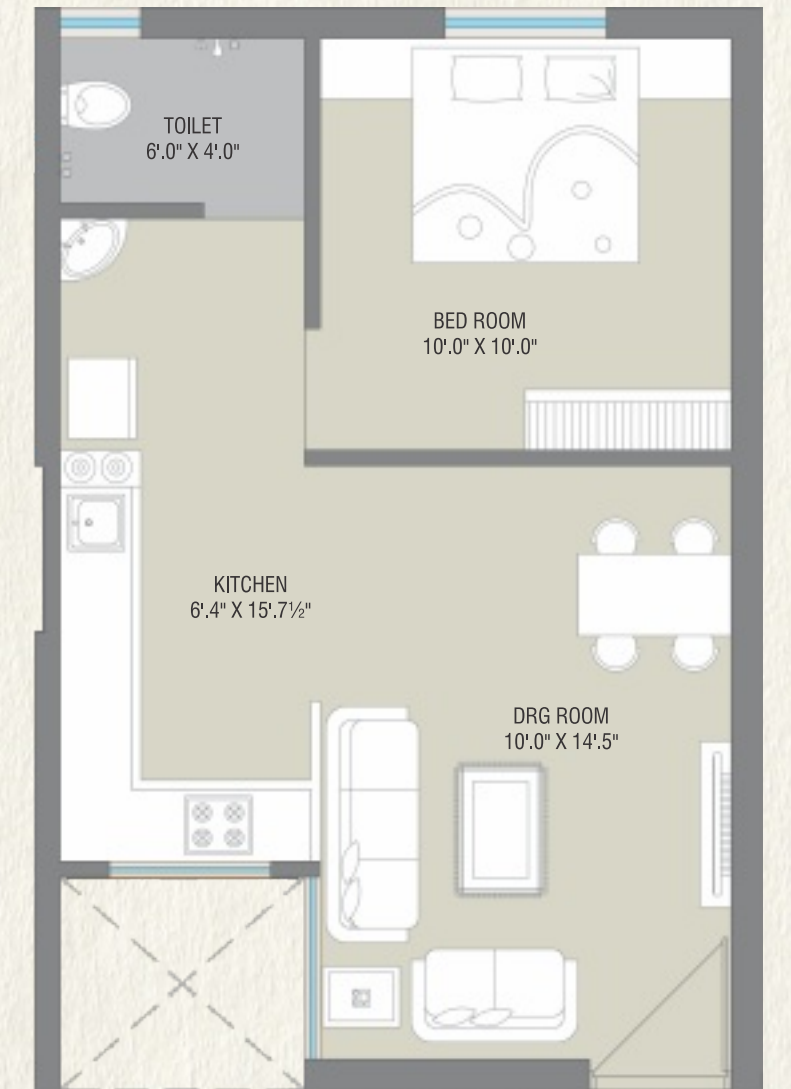
2BHK Floor plan

Carpet Area: 495 Sq.ft.
Balcony & Wash Area : 43 Sq.ft.



1BHK Floor plan

Carpet Area: 375 Sq.ft.

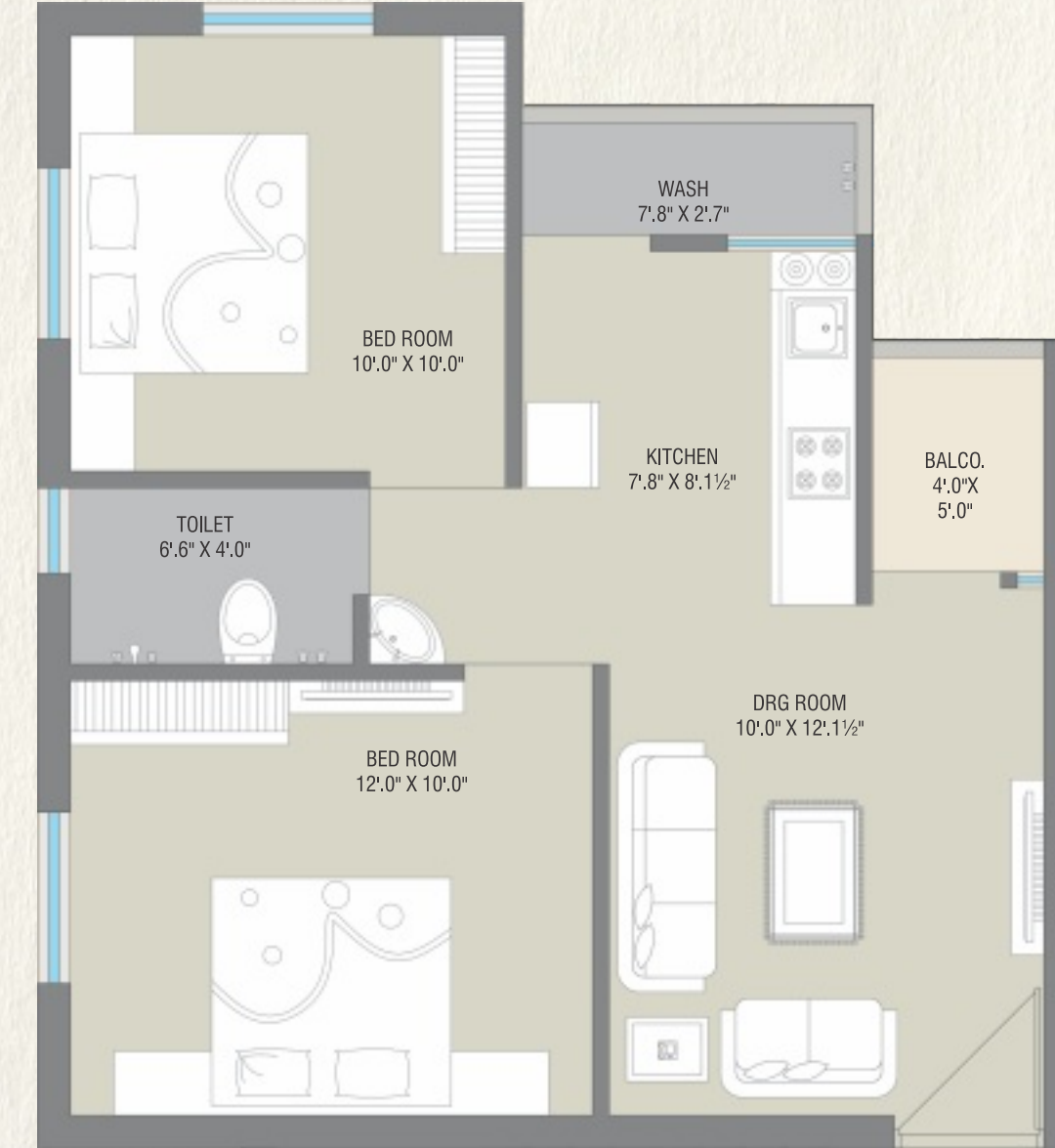


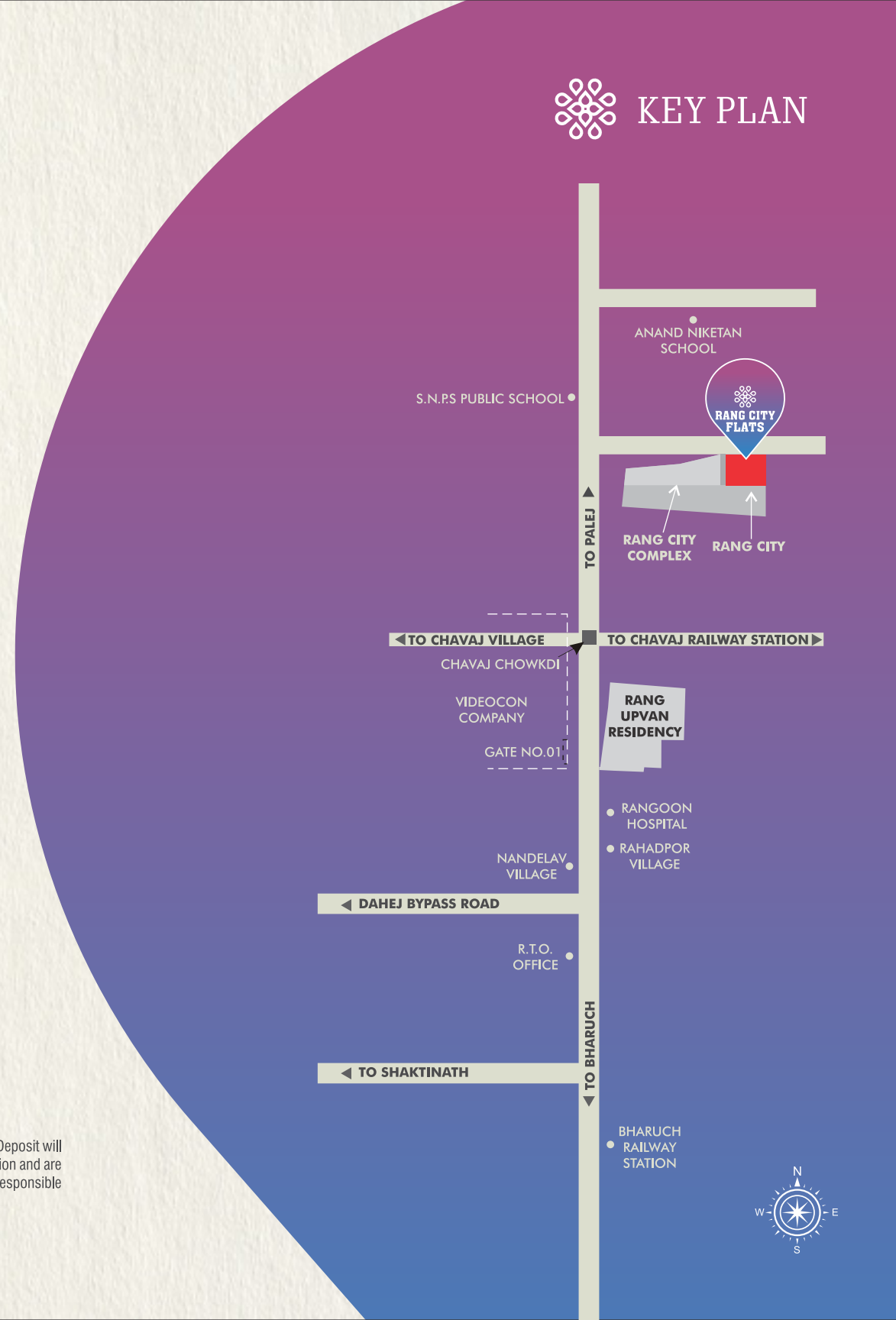
Block-A2, A3,A4
Typical Floor Plan



2BHK Floor plan

Carpet Area: 461 Sq.ft.
Balcony & Wash Area : 39 Sq.ft.





Developers:
AVDHOOT BUILDERS

Site: Rang City Flats, Nr. SNPS Public School,
 Chavaj Road, Bharuch.

Inquiry:
 Manoj Hariyani: **98241 01009**
 Alpesh Hariyani: **99240 11551**

Architect: Nisarg Rachna
Structural Consulting: SVN Consulting Engineers

Payment Schedule:
09% Booking
16% On Plinth Level
30% On Completion of Ground floor slab level
15% On Completion of Bricks Masonry
15% On Completion of Plaster Level
15% On Completion of Flooring Level

Notes: • Stamp Duty, Registration Charges, GST or any such present and future additional Government Taxes, Maintenance Deposit and DGVCL Charges and Deposit will be charged extra. • All plans are subject to amendments and approval by the relevant authorities. • All photography and computer imagery are artist's impression and are provided for illustrative and indicative purposes only. • While every reasonable care has been taken in providing this information, the developers cannot be held responsible for any inaccuracy. • Subject to RERA Jurisdiction.