



A BETTER TOMORROW

A BETTER TOMORROW



EMBRACE THE PRIVILEGED LIFESTYLE

Welcome to the lifestyle of your desire. Welcome to the home of your dreams. Home that gives sense of freedom and happiness. Home that provides utmost comfort and security. Home that offers all the luxuries of life. Come home to Sahaj Panoramic. Embrace the goodness of life.



EMBRACE THE MODERN ARCHITECTURE

Contemporary living is all about comfort and privacy.
At Sahaj Panoramic, not just security but your peace
of mind is our utmost priority.



Only 52 Elite Family



20ft. Wide Deck Balcony





Lavish Entrance Foyer



2 Auto High Speed Lift

EMBRACE THE ROYAL WELCOME

The glorious and grand entrance welcomes you to the world of elite living. These beautifully designed residences with its coveted location, stunning design and thoughtful amenities surpass every definition of luxury and reflect the beauty of high-life.

the indoor story





AMENITIES

the outdoor story



Entrance Gate
With Security Cabin



Security
Gated Community



School Bus Pick-Up
& Drop Point



EV Charging
Point



Allotted
Car Parking



Rooftop
Solar Panel

the indoor story



Well Design
Banquet Hall



Indoor
Gym Area



Indoor Game
Space



Yoga & Meditation
Space



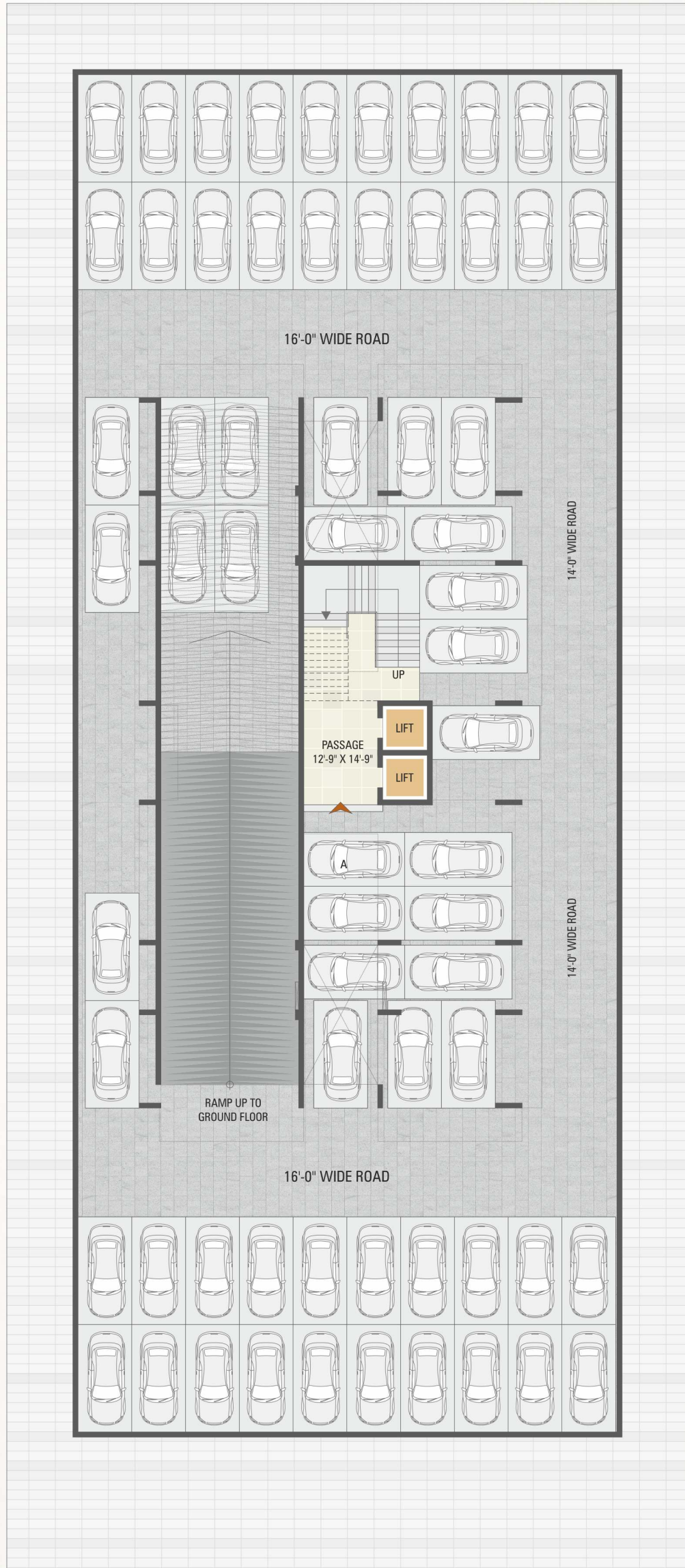
Home Theater
Space



Discotheque
Space

BASEMENT

LAYOUT FLOOR PLAN



NORTH

18.00 MT. WIDE ROAD

GROUND

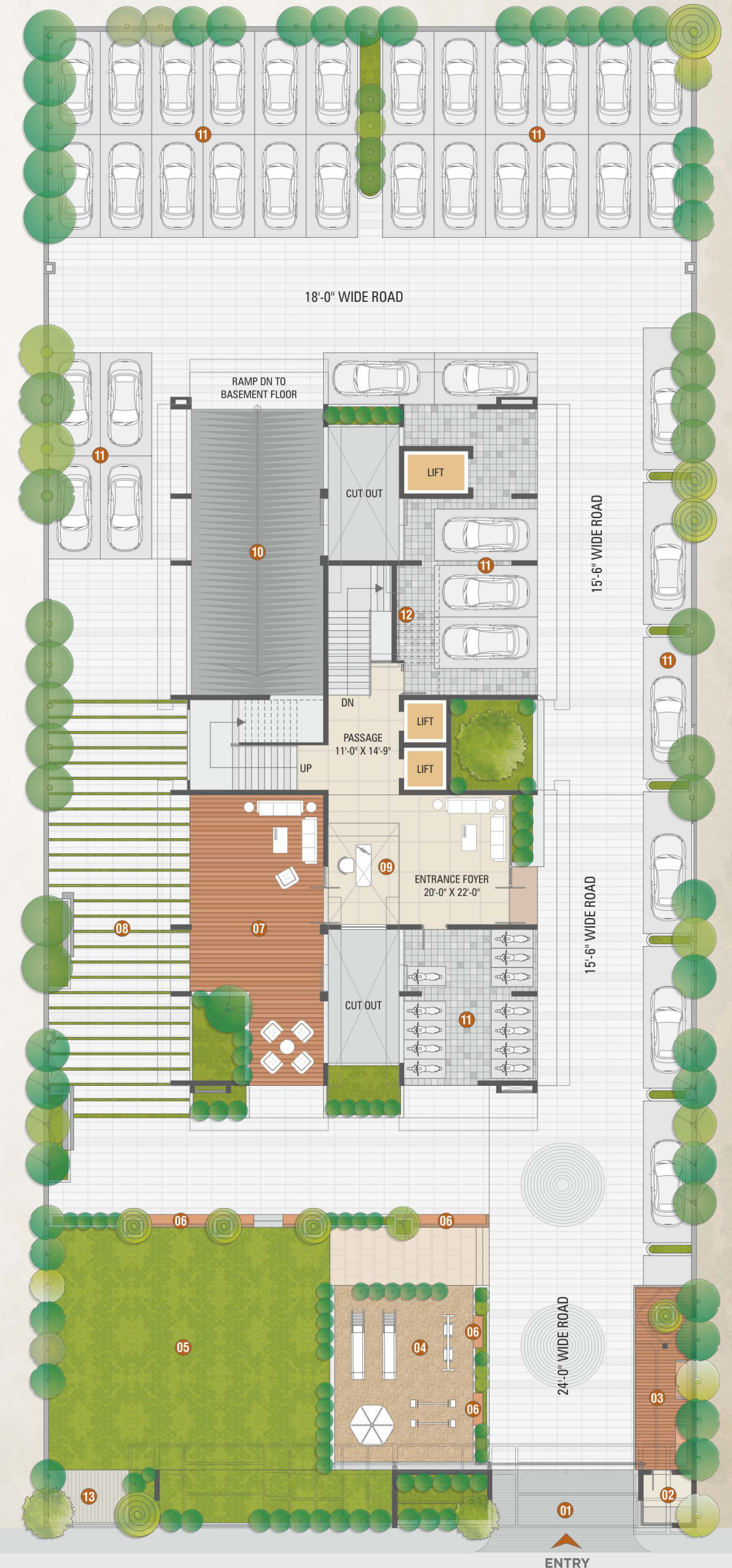
LAYOUT FLOOR PLAN

LEGENDS

- 01) Entrance Gate
- 02) Security Cabin
- 03) Pick-up Zone
- 04) Children Play Area
- 05) Landscaped Garden
- 06) Bench
- 07) Deck Sitting Area
- 08) Jogging Track
- 09) Entrance Foyer
- 10) Ramp To Basement
- 11) Parking
- 12) Meter Room
- 13) Transformer & Generator



NORTH



18.00 MT. WIDE ROAD

1ST
FLOOR PLAN



3 BHK
FLOOR PLAN

2ND TO 11TH & 13TH



3 BHK

FLOOR PLAN

12TH FLOOR PLAN



3 BHK

FLOOR PLAN

14TH FLOOR PLAN





EMBRACE THE
GLAMOUR OF FINE LIVING

There is no greater joy in the world but to see your children laugh, play and enjoy in abundance.
There is more than enough space for them here to form innocent friendships and make sweet
childhood memories

the outdoor story



Landscaped Garden



Children Play Area



Jogging Track



Senior Citizen Sitting

EMBRACE THE STUNNING BEAUTY

Embrace the greener side of life. Step out of your home and behold the beautiful lush landscape. Breathe in fresh air and surrender yourself to tranquility.

the outdoor story



EMBRACE THE ELEGANT LIVING

Your residence is created to indulge you in the luxury of space. Embrace a bigger and better way of living at Sahaj Panoramic.



BANQUET HALL / HOME THEATER / DISCOTHEQUE



INDOOR GYM



YOGA MEDITATION



INDOOR GAME

the indoor story

EMBRACE THE FABULOUS LUXURY

Make your celebrations memorable. Host events of any kind at the banquet hall right on premise. And indulge in world-class amenities right at your doorstep.

INTERNAL SPECIFICATIONS

FLOOR FINISH

- 32" X 32" or 32" X 64 vitrified tiles in all area living, dining, kitchen and bed rooms.

DECK & FLOWER BED

- Deck with vitrified tiles flooring.
- Flower bed with water proofing.

KITCHEN

- Vitrified / granite kitchen platform with sink.
- High quality vitrified tiles up to lintel level.
- Gas connection on kitchen platform and provision for water purification.

WASH & UTILITY

- Granite/Kota in flooring and vitrified tiles on dado with adequate electrical and plumbing points.
- Centralized plumbing for hot water with gas connection in individual flat.

STORE

- Adequate kota stone / granite shelves with glazed tiles dado.

WALL SURFACE

- All plastered walls with putty finish.

AIR CONDITIONERS

- Provision for route of copper pipe, drain pipe & space for outdoor unit.

TOILETS

- Decorative high quality vitrified tiles up to lintel level.
- Hindware / Cera / Simpolo or Asian equivalent sanitary wares standard brand C.P. fitting.
- Jaquar / Kohler / Hindware or equivalent wall mixtures / diverter in bed rooms.

DOORS / WINDOWS & BALCONY

- Designer main door with wooden frame provided with premium lock & fittings.
- Internal door frames provided with granite/ cement sheet.
- All window openings provided with granite frame and good quality aluminium - anodized sliding window.
- Well designed S.S. / M.S. / glass safety railing for each balcony.

ELECTRICALS

- Sufficient points in concealed copper wiring of Finolex / Polycab / Anchor or equivalent.
- Modular switches of Anchor / Legrand / equivalent.
- 3 phase meter to each flats.
- 2 amp. Power backup in each flats.

TELEVISION, INTERNET & TELEPHONE

- Convenient provision of internet, telephone and television point in each flats without cable.

CAMPUS FACILITY

- Well Designed Landscape Garden.
- Jogging Track.
- Designated Children Play Area.
- Senior Citizen Sitting.
- Entrance Foyer for Building.
- Power Backup Generator.
- Automatic ON/OFF System for Common Lighting.
- Rooftop Solar Panel.
- Rain Water Harvesting System.

EXTERNAL SPECIFICATIONS

FAÇADE TREATMENT

- Double coat sand faced plaster on external wall.
- Acrylic texture on external wall.
- Weather shield max /apex ultima paint on external wall.

ENTRANCE FOYER

- Well designed entrance foyer with landscape features and elegantly designed lobby at all the floors.

PARKING

- 2 Car parking for each flat at ground & Basement.
- 1 Ev charging point for each flat.

TERRACE

- Double coat water proofing on terrace.
- China mosaic flooring for heat reduction.

FIRE FIGHTING

- Fire fighting systems provided as par the fire norms.

WATER SUPPLY

- Adequate capacity of underground and overhead water tanks for SMC & bore water and separate tanks for fire safety.

ELEVATORS

- Two fully automatic passenger elevators of Kone / Schindler / equivalent.

ELECTRIC POWER BACKUP

- Silent generator of adequate capacity for elevators , water pumps and common facilities.
- Designer light fitting for common passage and campus.
- Solar power system for common and campus lighting , provided at terrace.

SECURITY

- 24 x 7 Gated security.
- CCTV camera coverage in reception, campus, elevators and basement area.

TECHNICAL SPECIFICATIONS

- Earthquake resistance structure design as par IS code.
- Construction with R.O. water.

TERMS AND CONDITIONS

- All rights reserved by the developer to make any changes in plan, elevation and details which will be binding to all members
- Stamp duty, GST, Registration charges, G.E.B & S.M.C charges, Legal charges, Maintenance deposit or any other charges and taxes as when levied by government or any of its body shall be borne by purchaser/buyer/legal possession holder
- Irregular payment shall lead to cancellation of booking
- In case of cancellation of booking 10% of total amount will be levied as service charge, The balance will be settled only after the next available booking
- Installation of A.C units will be permitted at the designated spots and nowhere else
- Changes which affects the elevation and structure would not be permitted
- Any internal changes would not be permitted without permission of developer
- Variation in colour, design, size of material used in this project may occur and can be changed without prior notice
- **This brochure is just for easy presentation of project and should not be treated as legal documents.**

LOCATION MAP



3 BHK ELEVATED LIFESTYLE

T.P.15, F.P.66, Block No.-57,
Monarch Circle, Opp. Lemon Grass Restaurant,
Gaurav Path Road, Pal, Surat, Gujarat-395009.

CONTACT DETAILS

81414 24000



RERA Reg. No.
PR/GJ/SURAT/SURAT CITY/SUDA/RAA11553/050423

Gujrera Website
www.gujrerar1.gujarat.gov.in

A PROJECT BY



PROMOTER NAME
INFRA SAHAJ

ARCHITECT



STRUCTURAL

