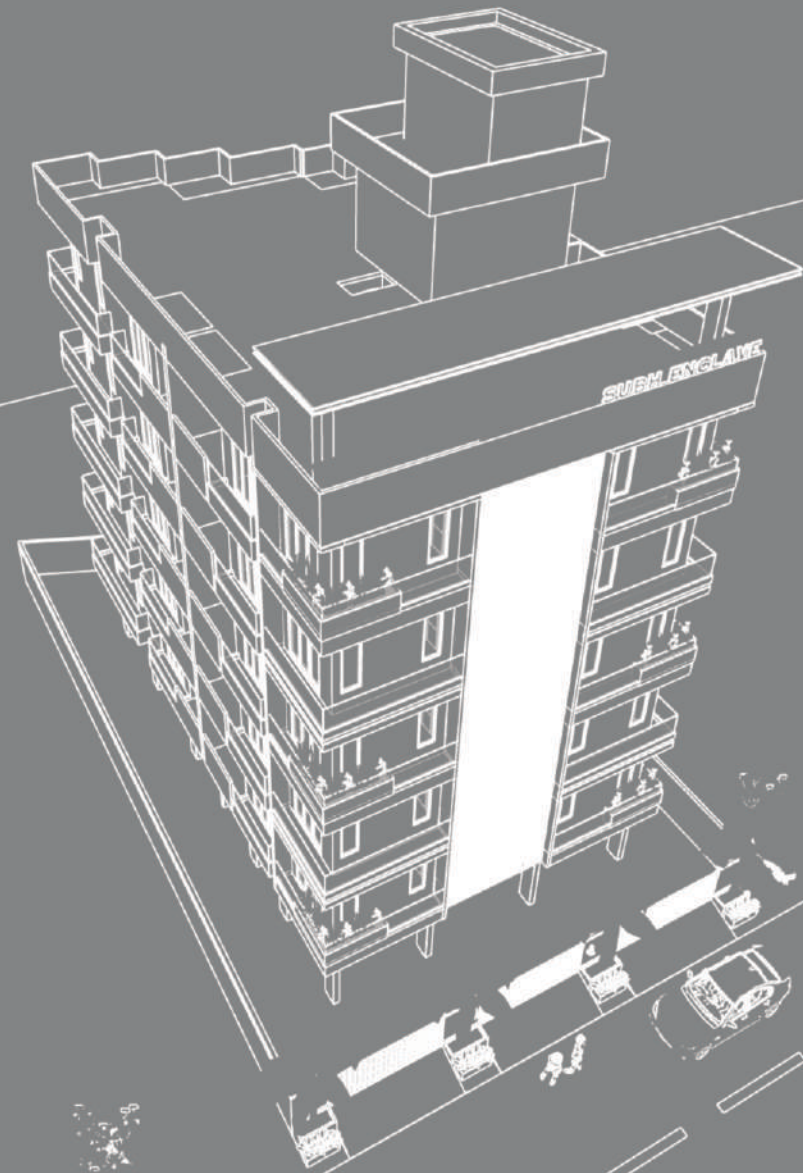




SHUBH ENCLAVE

By Shubh Builders

3 BHK Luxurious Flats





SHUBH ENCLAVE

SHUBH ENCLAVE

WELCOME TO YOUR VERY OWN PRIVATE COVE OF A NICHE LIFESTYLE.

SHUBH ENCLAVE

SHUBH ENCLAVE

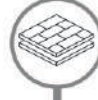
PEACEFUL LIVING | A PLACE TO STAY FIT | BEYOND THE ORDINARY

S P E C I F I C A T I O N



STRUCTURE

- RCC Framed Structure with Attractive Elevation.
- Waterproof colour for External Walls & White cement " Birla Putty " & colour for internal walls.



FLOORING

- Premium quality vitrified tiles flooring in all rooms.
- Waterproofing treatment in terrace & toilets.



KITCHEN

- Premium quality polished Granite Platform.
- Stainless steel sink.
- Water supply Point for RO and Washing machin.
- Washing machine in utility area.



ELECTRIFICATION

- AC Point in all bedroom & living room.
- Standard quality concealed Electric wiring for T.V., Fridge and Light Point in Each Flat.
- Standard company lift and generator for common light.



BATHROOM

- Standard quality sanitary ware & concealed pipe fittings
- Solor water system for hot water (Every Bathroom) in each unit.



DOORS & WINDOWS

- Two track UPVC for section windows.
- Decorative entrance Door.



SECURITY

- C.C.T.V Camera Provision in Parking.
- Fire safety features approved from fire department.

TYPICAL FLOOR PLAN

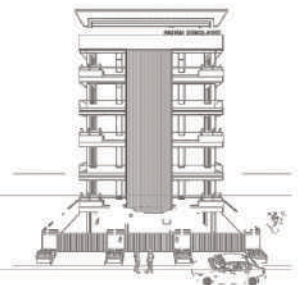
SHUBH ENCLAVE

THE *enchanting* AMBIENCE



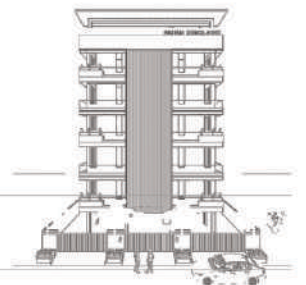
3 BHK Plan - Flat No. : 101 to 501

1.	Living Room	15' 6" X 12' 0"	6.	Master Bedroom 2	12' 0" X 11' 4"
2.	Kitchen Area	14' 0" X 8' 3"	7.	Bathroom 2	5' 0" X 8' 0"
3.	Dinning Area	9' 6" X 15' 4"	8.	Master Bedroom 3	12' 0" X 9' 8"
4.	Master Bedroom 1	13' 5" X 11' 4"	9.	Wash Area	5' 0" X 8' 3"
5.	Bathroom 1	4' 0" X 8' 0"	10.	Common Toilet	4' 0" X 8' 0"



3 BHK Plan - Flat No. : 102 to 502

1.	Living Room	15' 6" X 21' 8"	6.	Bathroom 2	8' 4" X 4' 6"
2.	Kitchen Area	14' 0" X 8' 3"	7.	Master Bedroom 3	12' 0" X 9' 3"
3.	Master Bedroom 1	11' 6" X 12' 4"	8.	Wash Area	5' 0" X 8' 3"
4.	Bathroom 1	11' 6" X 4' 0"	9.	Common Toilet	5' 10" X 5' 3"
5.	Master Bedroom 2	12' 0" X 13' 6"			



LOCATION MAP



Note :

- All rights are reserved to developer for any change in the plan, specification and other details which will be binding to the all members.
- Changes to structural elements are strictly prohibited at all the lifetime of building.
- All dimension are approximate and unfinished subject to change.
- This brochure is only for advertising and visual impression only. It shall not be considered as a part of legal documents.
- Furniture and fixtures shown in brochure are for visual impression purpose only.

OUR TEAM

Project By : Shubh Builders

Booking Contact :

Himanshu Chauhan
M. 94260 27418
75750 27418

Ashit Chauhan
M. 74878 24444
94266 27418

Project Architect
Akash Zinzuwadiya
M. 88493 82438

Project Engineer
Atulbhai Hirpara
M. 75676 49039

Legal Advisor
J. C. Virani
M. 98242 12674

Structural Engineer
Divyakantbhai Vaishnav
M.94274 44787

Site Location

SHUBH ENCLAVE, Kamdar Colony, Jamnagar, Gujarat 361006