



Site Add :  
Nr. Gulmohar Partyplot, Nr. Thaltej Oxygen Park  
Nr. keshar kadam, Thaltej - Hebatpur Road, Ahmedabad.  
M.: 99090 77722/33/44 | E.: [Infracon@vinayakbuildcon.com](mailto:Infracon@vinayakbuildcon.com)  
[vinayakinfracon](https://www.instagram.com/vinayakinfracon) | W.: [www.vinayakbuildcon.com](http://www.vinayakbuildcon.com)

YOUR  
DREAM HOME  
AwaITS



@ Zydus - Hebatpur road





Vinayak  
elysium

# THREE Road Corner **PROJECT**

zydus - Hebatpur Road

Located in the peaceful yet progressive area of Ahmedabad, zydus - Hebatpur just off the main zydus road, Vinayak Elysium is well-connected to major schools, colleges, business hubs, trade centers, retail hotspots, airport and hospitals.









On one side of Vinayak Elysium is the main approach road while on the other you get the views of the huge landscaped podium greens. Imagine waking-up to such Majestic views every single day and breathing fresh air for a lifetime.

1 iconic Tower | Only residential project  
56 modern living spaces | 25+ Amenities







# GROUND FLOOR LAY OUT PLAN





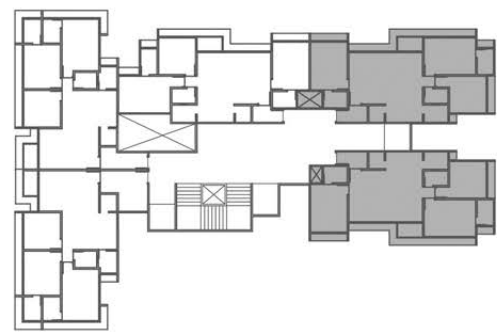
# TYPICAL FLOOR

LAY OUT PLAN  
( 1st to 14th Floor )



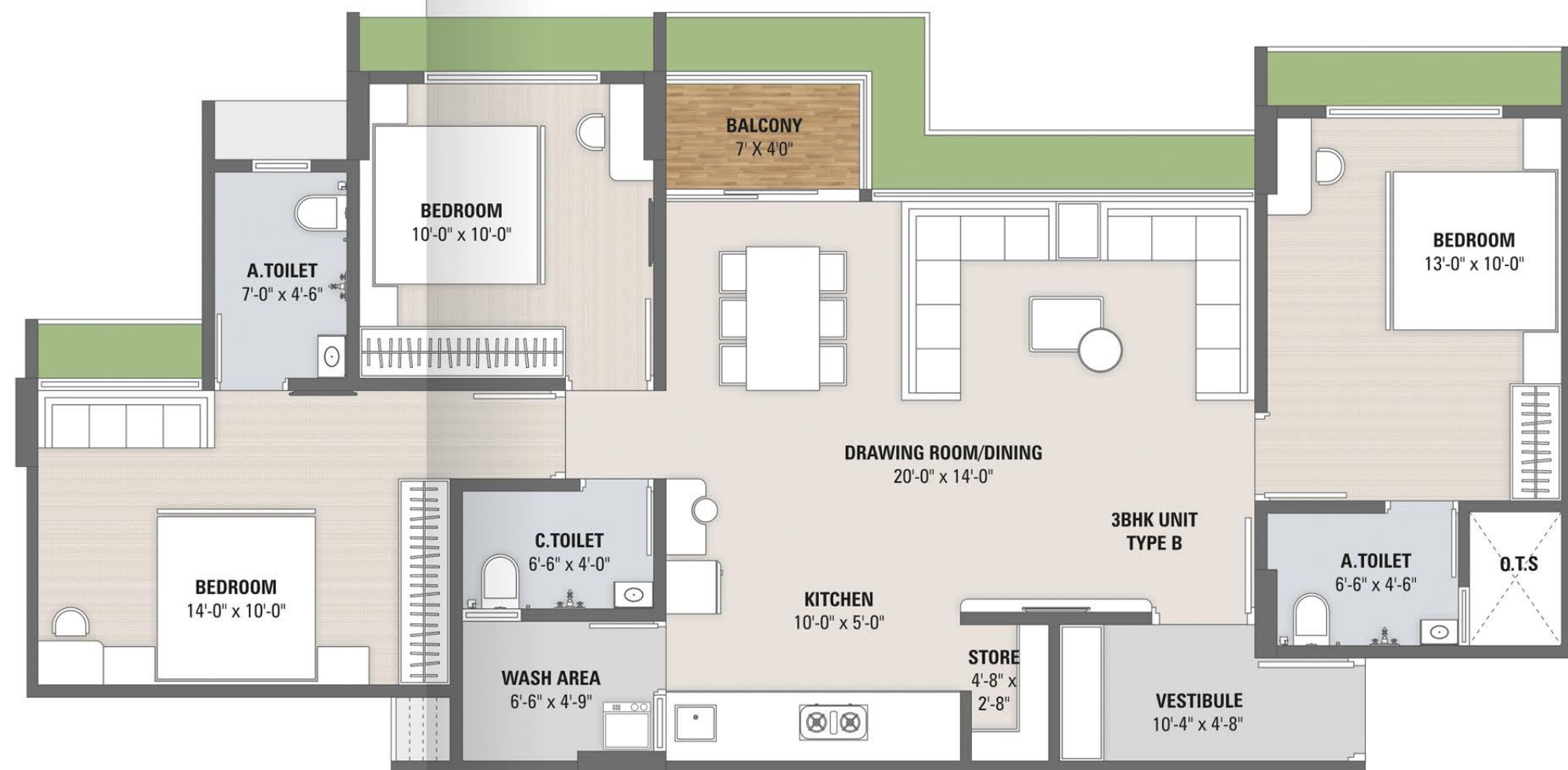
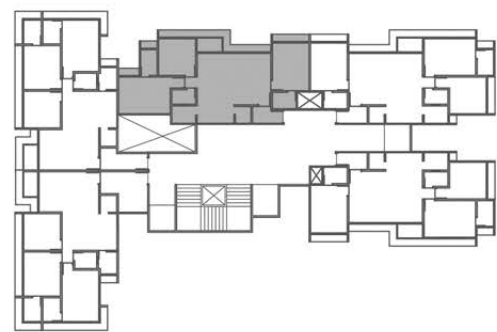
**3BHK UNIT PLAN**  
Type A

104 - 1404  
105 - 1405



**3BHK UNIT PLAN**  
Type B

103 - 1403





**4BHK UNIT PLAN**  
combine option

101 & 102 - 1401 & 1402



Vinayak  
**elysium**





## Switch to an Exotic way of **LIVING**

Taking a house from being simple to luxurious does not need to cost you a fortune. While the idea and meaning of luxury house design can be perceived differently by different people based on their personal preferences, introducing high-end features in your decor will assure higher quality, comfort, and elegance. The design will focus on the planning, detailing, and coherence of a thoughtful and distinctive style that will mirror your persona.







Feel like a king while sitting in the sofa of the **king sized drawing room**. Taste the flavours of life at the amazing kitchen - dining space. At Vinayak Elysium, you will find a home full of charm, elegance and comfort.

The logo for Vinayak Elysium, featuring a stylized orange and red flame-like symbol above the word "Vinayak" in a serif font, and the word "elysium" in a lowercase serif font below it.







# AMENITIES



MAIN  
ENTRANCE GATE



CCTV  
CAMERA



24 HRS.  
SECURITY



SCHOOL DROP OFF  
ZONE ICON



TERRACE  
SITTING AREA



SENIOR CITIZEN  
SITTING



YOGA DECK  
SPACE



SPACIOUS  
GYMNASIUM



OPEN AIR  
THEATRE



ATTRACTIVE  
GAZEBO



SOLAR  
PANELS



BASEMENT  
CAR PARKING



BRANDED  
3 LIFT



FIRE SAFETY  
SYSTEM



INDOOR  
GAMES



DGU SOUND PROOF  
GLASS WINDOW



LUSH GREEN  
GARDEN



24 X 7 WATER  
SUPPLY



POWER BACKUP  
SYSTEM



EARTHQUAKE-  
FREE STRUCTURE



ATTRACTIVE FOYER  
WITH WAITING AREA



LIBRARY



TODDLER  
PLAY AREA



WATERBODY












# Live with world class AMENITIES

25+ Amenities





## SPECIFICATION

<b>STRUCTURE</b>		Safe & Sound quality controlled R.C.C. frame structure with best material component. Earthquake resistant design.
<b>FLOORING</b>		A Unique Design Premium Quality Vitrified Tiles in all apartments.
<b>KITCHEN / STORE</b>		Exclusive granite platform with ISI CPVC & UPVC S.S. Sink & Design tiles dado up to lintel / beam bottom level.
<b>TOILET / PLUMBING</b>		Western concept designed toilet. Concealed plumbing with premium & Similar Equivalent Brand
<b>ELECTRIFICATION</b>		Concealed copper wiring with adequate number of points in all rooms Concealed electrification with premium quality copper wire / cable Premium branded modular switches and accessories.
<b>DOOR</b>		Designed main door & Internal door flush door with wooden / granite frame.
<b>WINDOWS</b>		Fully glazed anodized / powder coated aluminum windows with Granite seal frame.
<b>WALL / PAINT</b>		External wall with double coat sand face texture with acrylic paint. Internal wall mala plaster with white finish putty.
<b>ELEVATORS</b>		Premium quality high speed elegant elevator with automatic door.
<b>FINANCE</b>		Home loan available from Nationalise Bank, Private Bank & Financial Institute.
<b>TERRACE</b>		Water proofing for cool temperature & heat resistance glazed tiles.



**Site Add :**  
**2 Road Corner Plot**, Nr. Gulmohar Partyplot ,  
 Nr. keshar kadam Site office,  
 Thaltej - Hebatpur Main Road, Ahmedabad

DEVELOPERS  


ARCHITECT  


STRUCTURE  
**DIP**  
 Structural Consultant  
 Dipesh Mistry  
 M.: 99138 60901

RERA NO : PR/GJ/AHMEDABAD/AHMEDABAD CITY/AUDA/RAA11686/290423  
 Website: [gujrerar1.gujarat.gov.in](http://gujrerar1.gujarat.gov.in)

NOTES : • This brochure is not a legal part of the document and is only used for easy and better understanding. • All rights are reserved by developers to make any changes in plan, scheme elevation, dimension and other details there in to comply with statutory regulation shall be binding to all the members • Levis like registration stamp duty, Legal charges, A.M.C., G.S.T. torrent power, maintenance charges and other Government taxes (if applicable) etc. are to be borne by member on basis extra • Subject to Ahmedabad Jurisdiction.





**Near By 1 To 10 Min.**

- Jain Derasar
- S.P Ring Road
- SG Highway
- Sindhubhavan Road
- Taj Skyline
- Palladium Mall
- Zydus Hospital
- CIMS Hospital
- Science City
- Udgam Scool
- PVR
- Sola Bhagavt
- Iscon Temple

LOCATION