

life of abundance

APAAR

PRIDE HOMES

a project by **statista**  
INFRA DEVELOPERS





# LIFE OF ABUNDANCE

Apaar means a place of abundance... where there are plenty of opportunities and bountiful ideas to live a life of prosperity... where families can thrive, under the lushness of nature, and the perks of modern living...and where coming home gives you the best feeling, away from stress & into peaceful life... Such is the aura when you step into an Apaar Pride Homes.. A space that will fill you with pride of being a homeowner because the experience of living a plentiful life is exciting & economical as well.

APAAR  
PRIDE HOMES

**4800** sq. yards of land

---

**266** total residential units

---

**04** total number of blocks

---

**07** total number of floors

---

**PURELY RESIDENTIAL COMMUNITY**  
**(no commercial or shops)**







APAAR  
PRIDE HOMES





**PARKING LAYOUT**



**1ST TO 7TH FLOOR  
LAYOUT**



1 BHK FLOOR PLAN



ENTRY

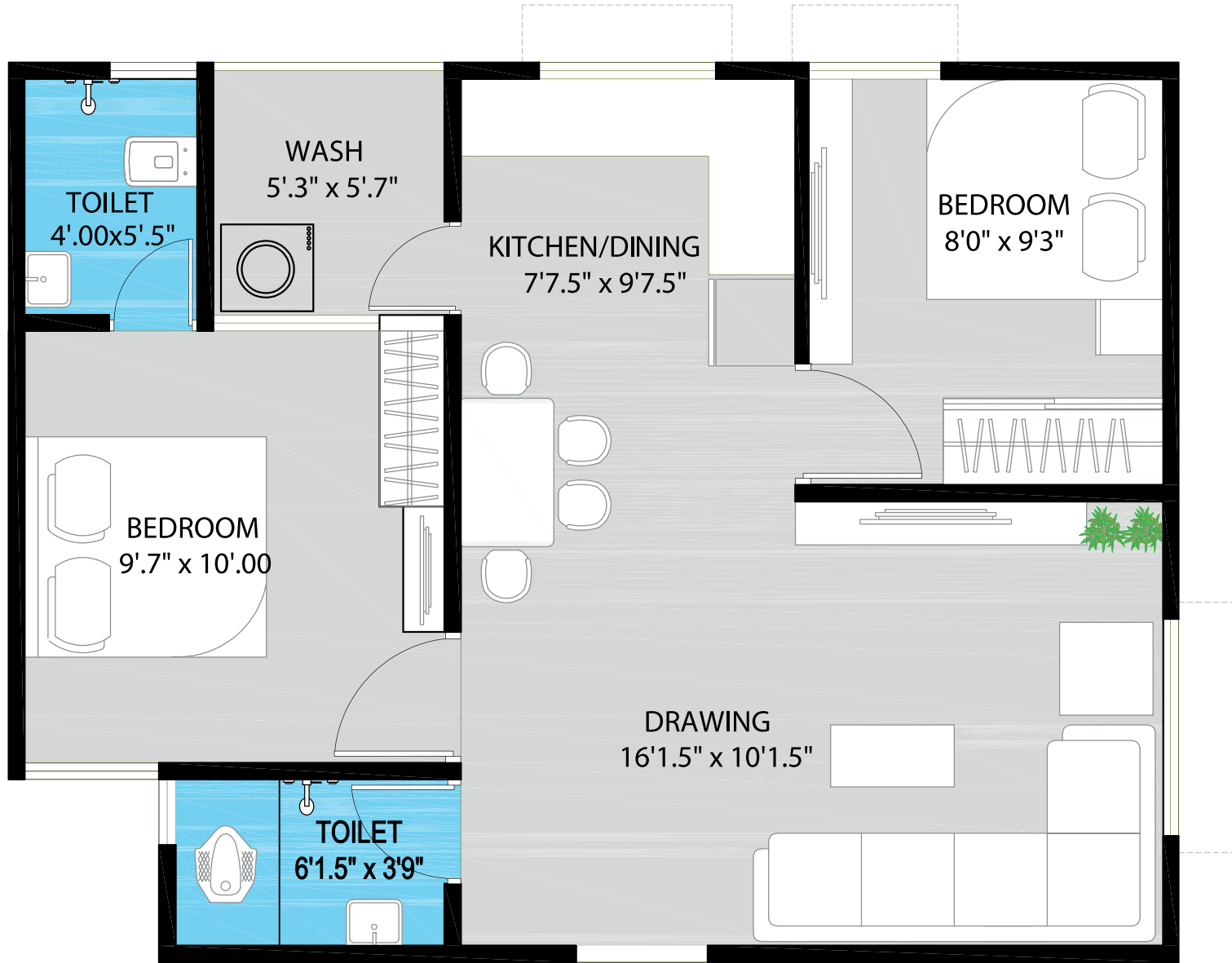


# TYPE A 1 BHK

UNIT SIZE = 670.92 SQ. FT.



2 BHK FLOOR PLAN



ENTRY



# TYPE B 2 BHK

UNIT SIZE = 881.73 SQ. FT.



WELL PLANNED  
**YOGA HALL**



FULLY EQUIPPED  
**GYM**





MODERN DESIGN  
**FOYER**











APAAR  
PRIDE HOMES





**5 min** drive from  
Prahalad Nagar

**10 min** drive from  
Iskcon Circle on  
S.G. Highway  
(during peak hours)

**5 min** walk for  
nearest Railway  
station

**3 min** walk for  
nearest Bus  
station





# SCHEME AMENITIES



SENIOR CITIZEN  
SEATING



YOGA  
HALL



GYM



FIRE SAFETY  
SYSTEM



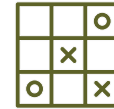
LANDSCAPE  
GARDEN



KIDS  
PLAY AREA



RAIN WATER  
HARVESTING



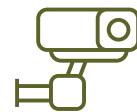
INDOOR  
GAMES



24X7  
SECURITY



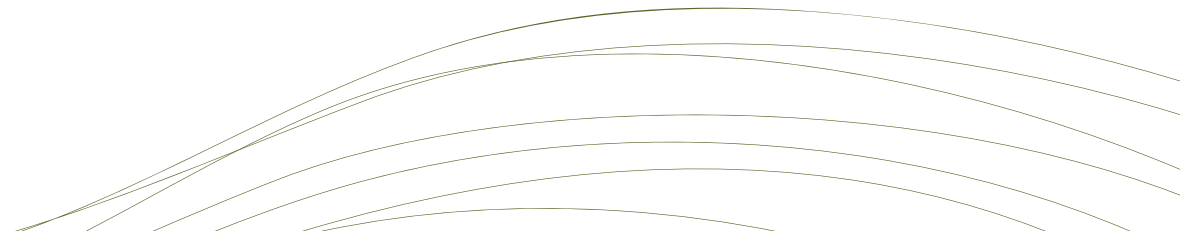
CAR  
PARKING



CCTV  
CAMERA



SOLAR  
PANELS



# SCHEME SPECIFICATIONS

- . Earthquake resistant R.C.C frame structure
- . **INTERIOR WALLS:** Single mala plaster with birla putty finish
- . **EXTERIOR WALLS:** Double coat plaster with acrylic paint
- . **FLOORING:** Vitrified tiles in living room, bedrooms & kitchen
- . **KITCHEN:** Granite platform with S.S sink and wall tiles upto lintel level
- . **TOILETS:** Lintel level ceramic tiles on walls & floor. Branded sanitary wares & C.P fittings
- . **WINDOWS:** Powder coated aluminium glass windows
- . **DOORS:** Decorative main door with wooden frame and laminated flush doors for other rooms
- . **ELECTRIFICATION:** Single phase concealed copper wiring. ISI modular switches
- . **LIFT:** Good quality company
- . **TERRACE:** China mosaic floor with water proofing treatment
- . 24 hours water supply with underground & over head water tanks
- . Fully paved parking
- . Fire safety system as per A.M.C norms
- . Children's play area with landscaped garden
- . 24 hours security with CCTV camera

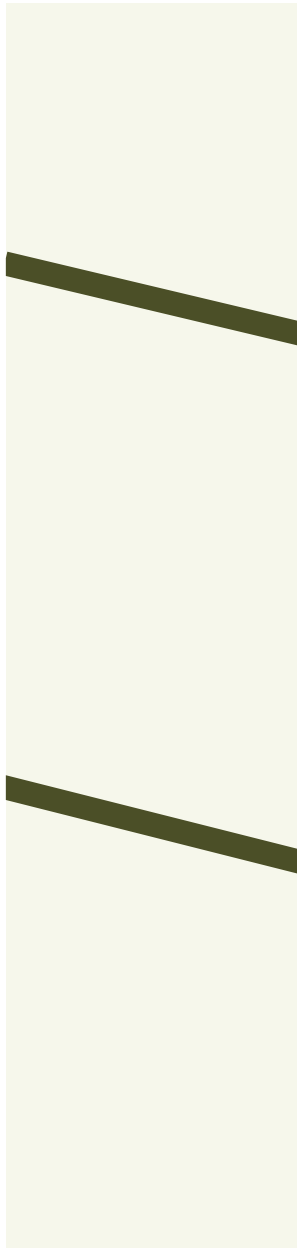


# SCHEME LOCATION

Nearby English / Gujarati medium School , Hospitals

Pollution free Fastest Developing area in the vicinity of posh area of  
Pralhad nagar & Satellite

Easily accessible to Public Transport (City Bus stand / Railway station /  
State Transport Bus stand)

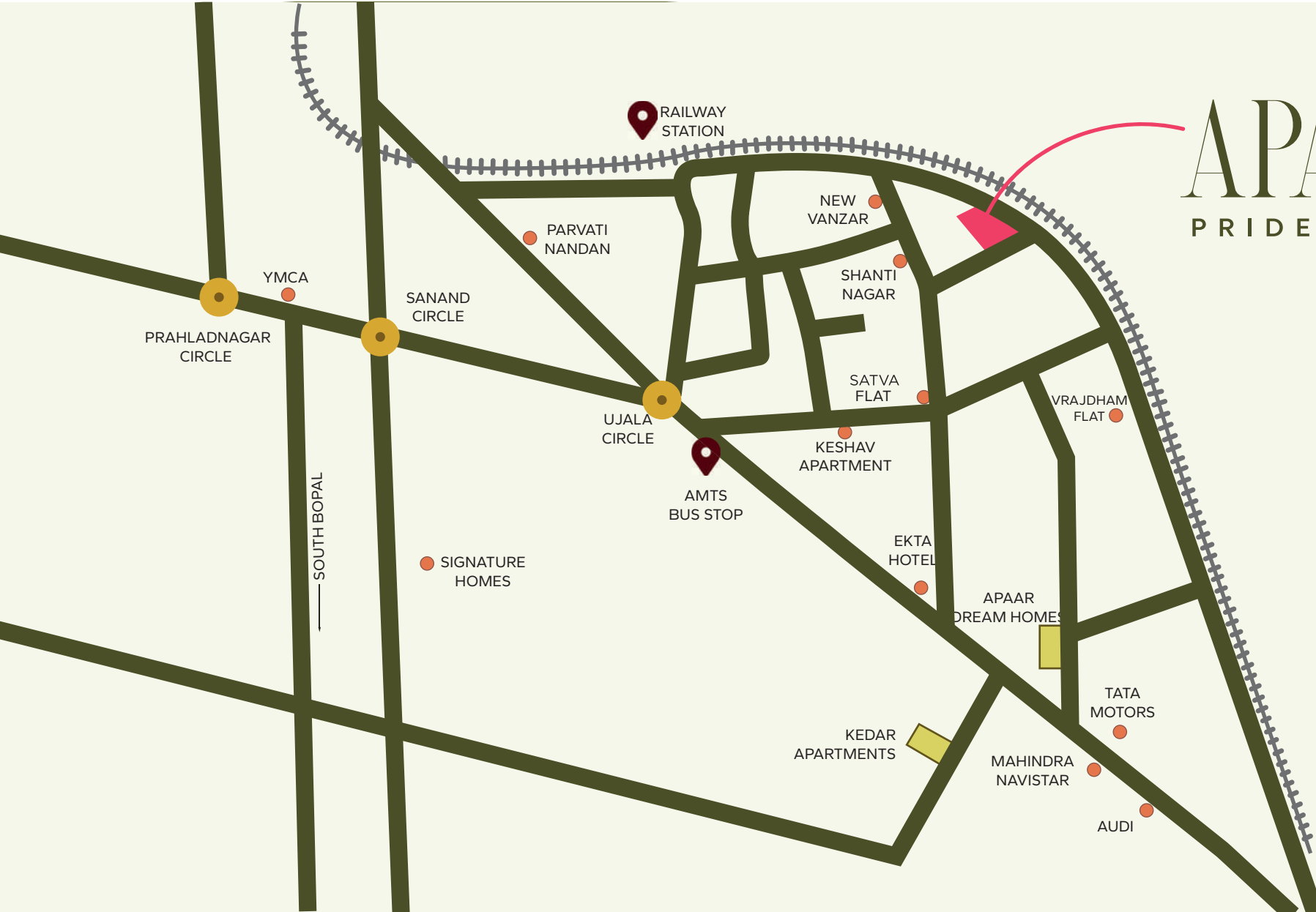




life of abundance

# APAAR

PRIDE HOMES





YOUR ADDRESS  
OF HAPPINESS





A PROJECT BY:  
**STATISTA INFRA DEVELOPERS**

ARCHITECT:  
**VARSHA DESIGN CONSULTANT**

STRUCTURE CONSULTANT:  
**STRAP DESIGN**

**+91 9825887676 | +91 9825887474**  
statistainfradevelopers@gmail.com  
www.statistainfradevelopers.com

SITE ADDRESS:  
**Apaar Pride Homes, near Vrajdharm Apartment,  
Ujala Circle, S.G Highway, Ahmedabad, Gujarat-382210**



Find us at:  
[www.instagram.com/statista\\_developers](https://www.instagram.com/statista_developers)



Find us at:  
[www.facebook.com/Statista\\_developers](https://www.facebook.com/Statista_developers)

**[www.gujrera.gujarat.gov.in](http://www.gujrera.gujarat.gov.in)**

**RERA Reg. No.:PR/GJ/AHMEDABAD/AHMEDABAD CITY/AUDA/RAA10628/030922**

#### Special Notes:

The developers reserve the rights to change or revise or make any modifications, additions or alterations in the scheme as a whole or any part thereof or any details therein, at their sole discretion without any prior notice. Such changes would be binding to all the members.

Buyers are strictly not permitted to make any changes, alteration of any nature in the elevation, exterior color scheme of the complex or any change affecting the overall design, concept and outlook of the entire scheme during or after the completion of scheme.

Service tax, Stamp duty, Registration / Maintenance and any other Govt. taxes during or after the scheme will be borne by the buyers.

Maintenance deposit shall be borne by the buyer and shall be paid at the time of possession. Stamp Duty & Registration fees shall be borne by the buyers.

This brochure is just for an easy presentation of the project & should not be treated as a legal document.

The entire dimension given is approximate & unfinished.

Subject to Ahmedabad Jurisdiction.



*LIVE BETTER*  
*WITH* **APAAR**  
PRIDE HOMES

a project by **statista**  
INFRA DEVELOPERS