



Abh^lasha
by ॥श्लोका॥ Group



Abhivasha
by Anand Group



॥श्लोक॥[®]

Shlok Group has been transforming the skyline of the city since 2006. Over the years, we have become a leading construction company, catering to the needs of numerous families. Our commitment to quality, innovation, and customer satisfaction has earned us the trust of our clients, who have shown unwavering faith in our previous projects.

At Shlok Group, we believe that every building we construct is a testament to our passion for excellence. Our projects are not just structures, but a reflection of our ambition to create a new reality, one that surpasses imagination. With a team of highly skilled professionals, we strive to bring the best of planning, innovation, and thoughtfulness to each project we undertake, breathing life into every structure we build.

We take pride in the fact that our homes are not just bricks and mortar, but a place where families can create memories that last a lifetime. Our commitment to quality and excellence is unmatched, and we are determined to continue this tradition with our upcoming project - Abhilasha.



4BHK

Premium living
with 4 Balconies

- 10 storeys
- 30+ Amenities
- 2 Iconic Towers
- 2 Level Basement
- Basement Parking
- 4BHK premium living
- 60 luxurious residences
- 3 layer CCTV Surveillance
- Entrance Foyer with waiting lounge



4 BHK with Balconies

Abhilasha is a testament to the beauty and grandeur of nature. Inspired by the saffron flower, a prized and coveted symbol of beauty and purity, Abhilasha offers residents the chance to live in harmony with nature without sacrificing the amenities & luxuries of modern living. From the exquisite landscaping to the premium materials used in construction, Abhilasha has been designed to seamlessly blend nature with luxury.



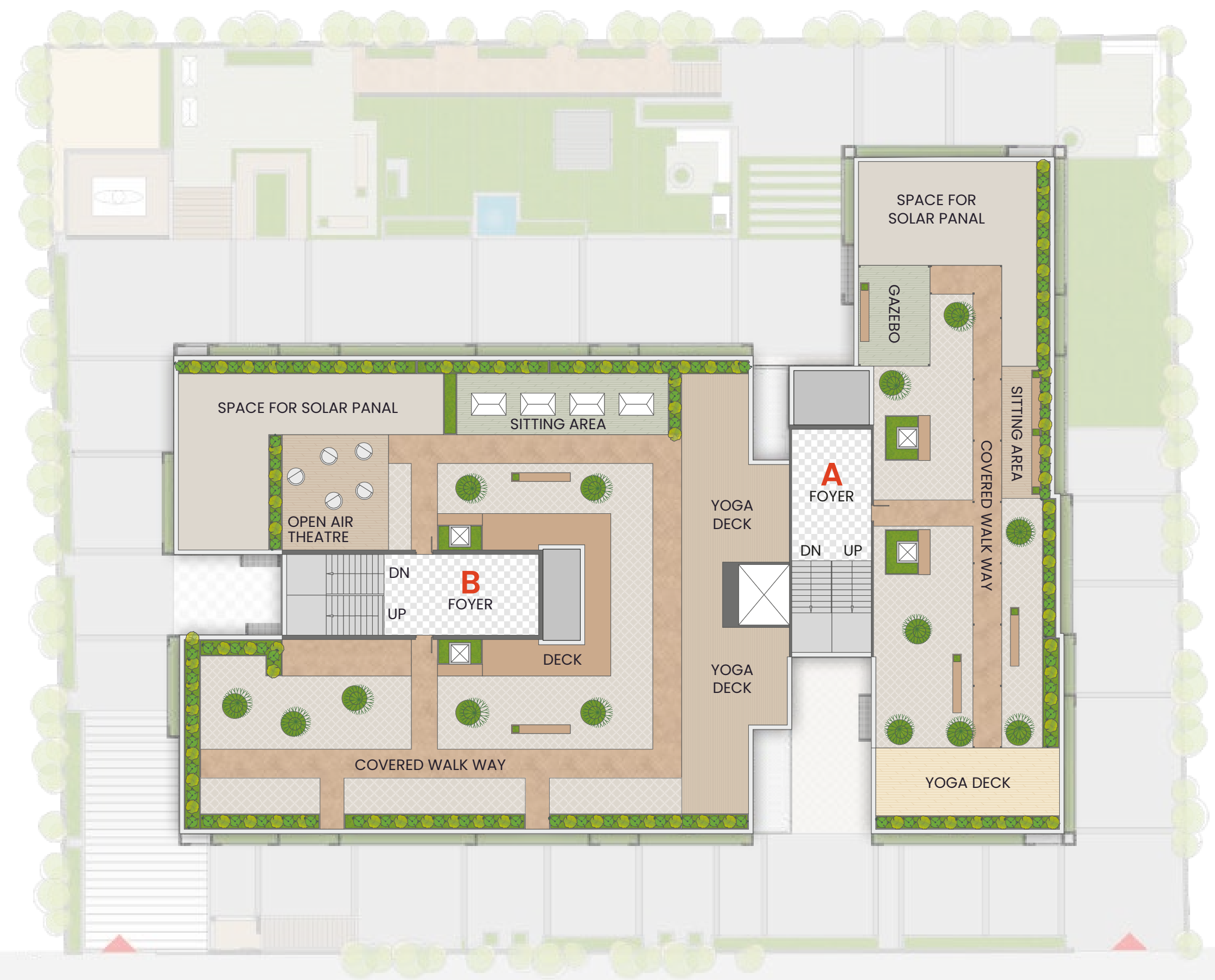
A vast field of purple saffron flowers stretches towards a horizon under a warm, golden sunset sky. The flowers are in various stages of bloom, with some showing bright red stigmas. The overall atmosphere is serene and exotic.

Experience the taste of exotic living

TYPICAL FLOOR PLAN



TERRACE PLAN

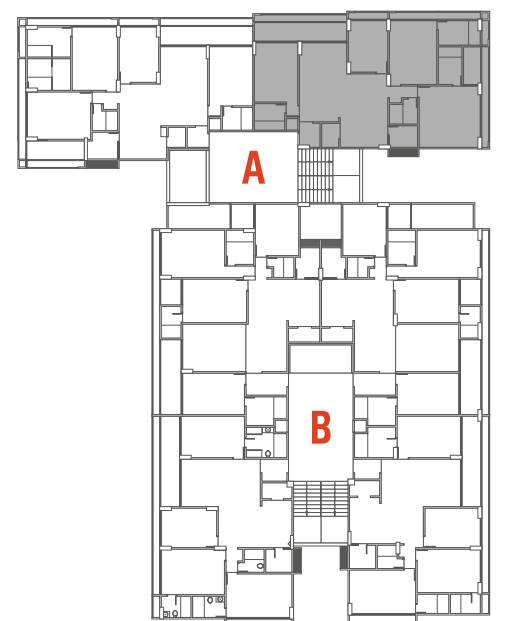


GROUND FLOOR PLAN

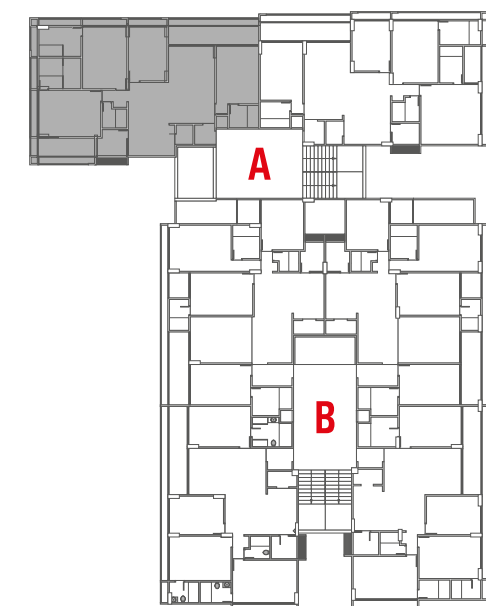


12.0 WIDE ROAD

UNIT PLAN (A-101)



UNIT PLAN (A-102)



UNIT PLAN (B-101)



UNIT PLAN (B-102/103)



UNIT PLAN (B-104)



Unparalleled Amenities for an unparalleled lifestyle



Outdoor Amenities :

- Landscaper Garden
- Gazebo
- Open Air Celebration Space
- Open Air Theatre
- Basketball Court
- Jogging Track
- Meditation/yoga Deck

Indoor Amenities:

- Senior Citizen Sit-Outs
- Multipurpose Hall
- Indoor Games
- Common shared Kitchen & Storage for Society's Use
- Air Conditioned Gym with the latest equipments





Security and Safety:

- 24 X 7 Security
- Power Back Up Generator
- Biometric Lock For Main Door
- Fire Safety
- Video intercom Kit

Kids' Amenities:

- Children's Play Area
- Toddler Play Area
- Children Drop Off Zone





Utilities and Services:

- 24 Hrs Water Supply
- PNG Gas Connection
- Allocated Parking
- 2 Lifts per Block
- Street Light Plantation
- DTH & TV Cable Connection
- Solar Rooftop For Common Amenities
- 3 Phase Power Connection For Every Unit



Breathe in luxury
with the calm

Green living at its best

We believe in sustainable living and taking care of the environment. Our property reflects our commitment to eco-friendliness through the use of green features and initiatives like solar rooftop for common shared amenities. From solar panels to energy-efficient lighting, we have taken steps to reduce our carbon footprint and promote a healthier planet.



Where luxury Meets Functionality



PROPERTY SPECIFICATIONS

STRUCTURE

R.C.C. frame structure as per new by laws.

FLOORING

Vitrified tiles for entire flooring in all apartments.

Anti skid rustic tiles floor in balcony.

WALL FINISH/ELEVATION

External double coat Mala plaster with texture & acrylic paint.

Internal Mala plaster with wall putty

DOORS & WINDOWS

Decorative main door with wooden frame.

All windows in aluminium section, Window Domal series with reflective glass.

Window sill & jamb made with polished stone or granite.

KITCHEN

Mirror polished granite platform with S.S. sink.

Designer glazed tiles up to lintel level.

ELECTRICAL

3 Phase concealed wiring with an adequate plug points in all rooms.

Branded modular switches. Provision for DTH and internet points.

Provision for ELCB, MCB distribution box.

PLUMBING WORK

CPVC/UPVC Water supply pipes & PVC pipes for soil waste & drainage system.

Jaquar or equivalent Plumbing fittings & Sanitary ware.

BATHROOMS

Vitrified/ceramic/ glazed tiles upto lintel level.

Granite/composite marble basin counters and wash basin.

Door frame made with polished stone or granite

TERRACE

Brick-bat concrete with china mosaic for heat reflection and thermal insulation.

FIRE SAFETY

Fire Safety System



Living within the golden mile

Living in a well-connected area makes your life easier. The existing network of roads provides you super connectivity with the most developed segment of the city. A location that keeps you connected with every corner of the city

+91 98250 67674

abhilasha0060@gmail.com

www.shlokgroups.com

ABHILASHA, OPP. SATYAMEV VISTA, S.G. HIGHWAY, GOTA.

