



*Reaching the pinnacle of luxury
and comfort in lifestyle!*

A HOLISTIC LIFE WITH LUXURY AND LEISURE...

A. SHRIDHAR GROUP ensures that their residents could embrace the best of luxurious elements that could elevate their lifestyle. Blending the traditional courtyard with the modern elevation, ANANTARA ALPINES marries the best of both past and present to guarantee a brilliant future for its residents.

PROJECT HIGHLIGHTS

ANANT COURTYARD

Bringing together the facets of life under a single canopy.



ANANT AMBIENCE

Endearing your environment with freshness that your lives deserve.

ANANT LOCATION

Accessing your abodes near places that make your lives complete.



ANANTARA ALPINES

Prestigious **4 BHK** Courtyard Living at **THR** (Thaltej-Hebatpur Road)

ANANTARA ALPINES is a premium residential avenue that introduces the humble courtyard in an elite setting for enriching families like never before! Beset by verdant ambience and religious spaces, this project is a unique landmark that ensures outstanding connectivity and accessibility to the most important centres of the city.



PREMIUM
LIVING SPACES FOR

70

CLOSE-KNIT
FAMILIES

ANANTARA ALPINES presents brilliant abodes for families, embedded with spacious and stylish spaces, tailored to match the needs of each resident in the family, optimally.



UNIQUE ATTRIBUTES



**PLANTATION
ZONE**

WITHIN THE APARTMENT



**SPIRITUAL
ZONE**

WITHIN THE PREMISES



**NO VEHICLE
ZONE**

SURROUNDING THE COMMON PLOT

ANANTARA ALPINES offers three unique attributes that differentiate its abodes from the rest – one that respects privacy in religion, another that ensures sustainable atmosphere, and one that ensures your ambience is unblemished from pollution. Here is the trifecta that sets Alpines apart.

THE LAYOUTS

ANANTARA ALPINES ensures seamless navigation layouts for residents to move within and outside the project, without getting them lost in a maze of structures.



TYPICAL FLOOR PLAN



GROUND FLOOR PLAN





UNIQUENESS IN EVERY CREATION!

ANANTARA ALPINES ensures holistic and sustainable lives for its residents, embracing maximum ventilation, privacy measures, and breath-taking views for a well-rounded lifestyle.

- Optimum Natural lights & Ventilation
- Panoramic view for every residence



70 distinct
Apartments



Vastu
Compliant



Centralize Irrigation
systems for Balcony
Plantation



WELCOME TO THE



ANANT COURTYARD

The boundless (Anant) courtyard will tell the story of these abodes as they revolve around the core that brought the families together like those in our past heritage! Anant Courtyard embraces the yester-year values as it evolves towards modern times.

EMBRACE YOUR ENVIRONS,
INSIDE YOUR LAVISH ABODE!

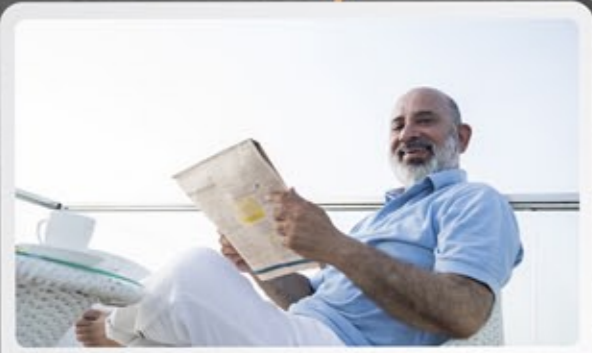


CONNECTING INDIVIDUALS
UNDER A SINGLE CANOPY!



ANANT COURTYARD

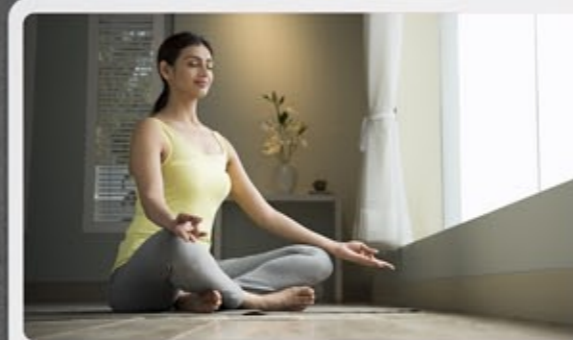
The Anant Courtyard brings families together,
to live happily in the warmth of togetherness,
right here.



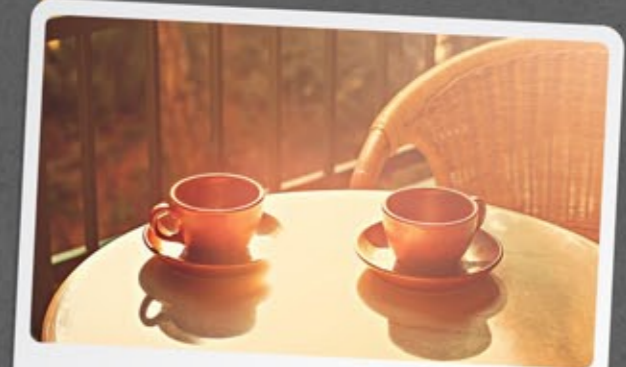
Newspaper Reading Arena



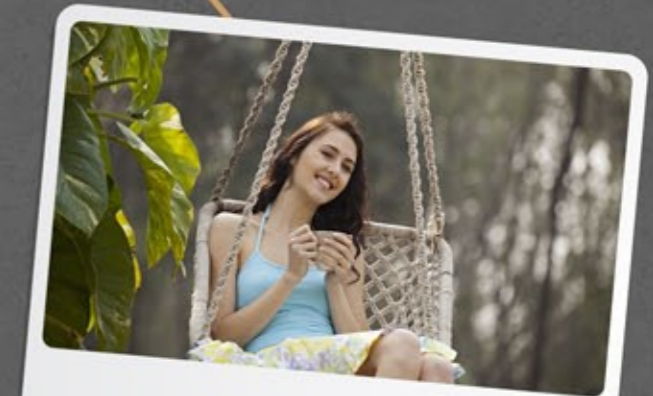
Dinner Party Avenue



Yoga Deck



Coffee Space



Swings 'n Slides

EVERYTHING FOR EVERYONE!

ANANTARA ALPINES residents can choose their elite apartments from the multiple options available to fulfil their needs and requirements.



OPTIONS OF CHOOSING

- Courtyard with separate living & family spaces
- Balconies with living and master bedroom
- An apartment without a courtyard - providing an Ultra lavish king size living room





THE PANORAMIC VIEW
THAT APPEARS WIDER THAN EVER!



ANANT COURTYARD



EMBRACING YOUR DREAMS; RIGHT FROM THE ENTRANCE!

With a beautiful vestibule that welcomes visitors without affecting your privacy, every abode at ANANTARA ALPINES presents a grand entrance marked by homely and spiritual vibes.

- Separate entry to servant room with direct access to kitchen & wash yard
- Separate elevators for house-helps and goods



A grand
welcoming
vestibule



Dedicated
puja space

AN EXPANSIVE LIVING SPACE
THAT MEETS YOUR NEEDS!

Residents who are not keen to have an open courtyard, can choose the limited edition apartments that utilize the space into living and family room, extended with a spacious balcony.



ANANT COURTYARD

A BEDROOM THAT
MARRIES COSINESS WITH GLAMOUR!

Every bedroom at ANANTARA ALPINES is blessed with natural light and ventilation for its residents, while ensuring the space itself is grander than ever.



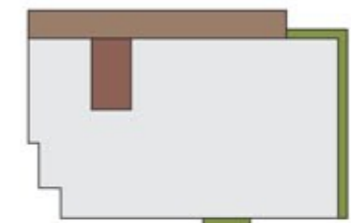
UNIT PLAN BLOCK A
WITH COURTYARD



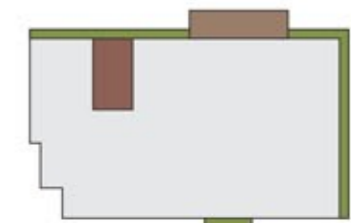
BLOCK - A | 101 - 1001
COURTYARD - 8'6" x 15'4"



BLOCK - A | 102 - 1002
COURTYARD - 8'6" x 15'4"



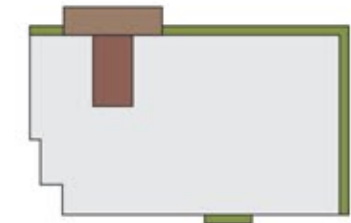
BLOCK - A | 104
COURTYARD - 8'6" x 15'4"
DECK - 204 SQ. FT.



BLOCK - A | 204 | 504 | 804
COURTYARD - 8'6" x 15'4"
BALCONY - 15'9" x 6'0"

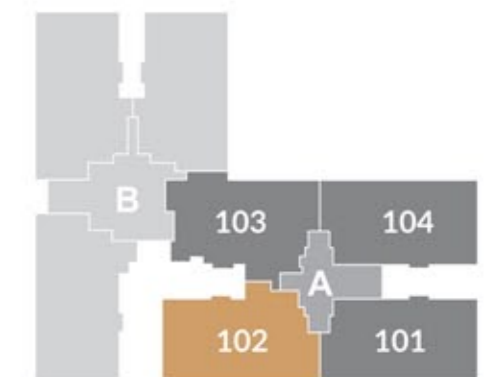


BLOCK - A | 304 | 604 | 904
COURTYARD - 8'6" x 15'4"
BALCONY - 15'9" x 6'0"



BLOCK - A | 404 | 704 | 1004
COURTYARD - 8'6" x 15'4"
BALCONY - 15'9" x 6'0"

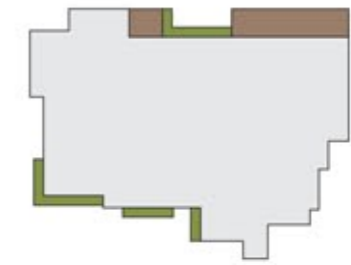
- UNIT SPACE
- BALCONY
- COURTYARD
- GREEN SPACE



UNIT PLAN BLOCK A
WITHOUT COURTYARD



BLOCK - A | 103
DECK - 5'2" x 5'6" | 89 Sq. Ft
6'0" x 25'2"



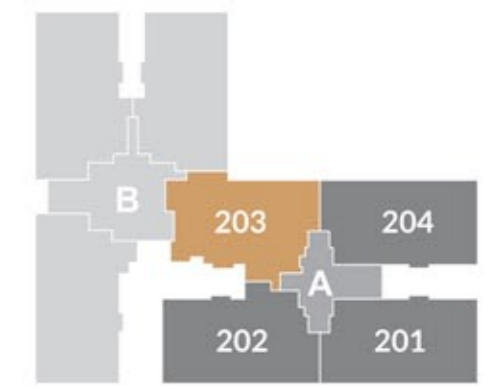
BLOCK - A | 203 | 503 | 803
BALCONY - 5'2" x 5'6" | 6'0" x 24'6"



BLOCK - A | 303 | 403 | 603
703 | 903 | 1003
BALCONY - 5'2" x 5'6" | 6'0" x 15'9"

- UNIT SPACE
- BALCONY
- GREEN SPACE

203



UNIT PLAN BLOCK B
WITH COURTYARD

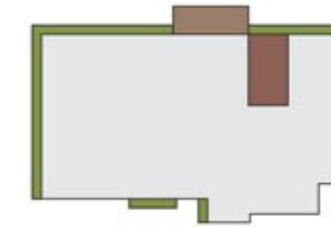


BLOCK - B | 101 - 1001
COURTYARD - 8'6" x 15'4"



BLOCK - B | 102
COURTYARD - 8'6" x 15'4"

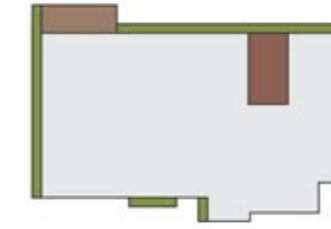
BALCONY - 238 SQ. FT.



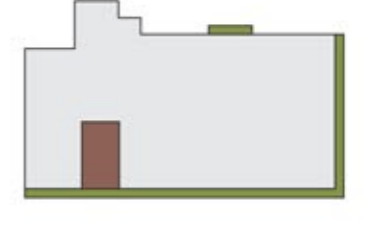
BLOCK - B | 202 - 502 - 802
COURTYARD - 8'6" x 15'4"
BALCONY - 15'9" x 5'9"



BLOCK - B | 302 - 602 - 902
COURTYARD - 8'6" x 15'4"
BALCONY - 15'9" x 5'9"

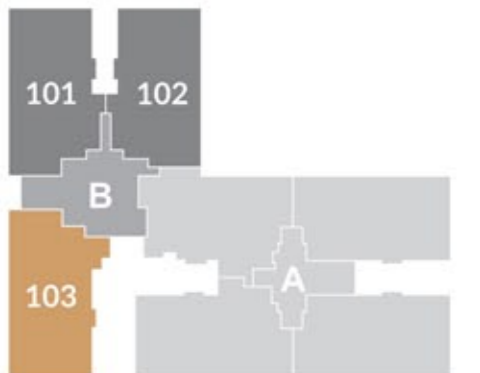


BLOCK - B | 402 - 702 - 1002
COURTYARD - 8'6" x 15'4"
BALCONY - 14'1" x 5'9"



BLOCK - B | 103 - 1003
COURTYARD - 8'6" x 15'4"

- UNIT SPACE
- BALCONY
- COURTYARD
- GREEN SPACE





WELCOME TO THE



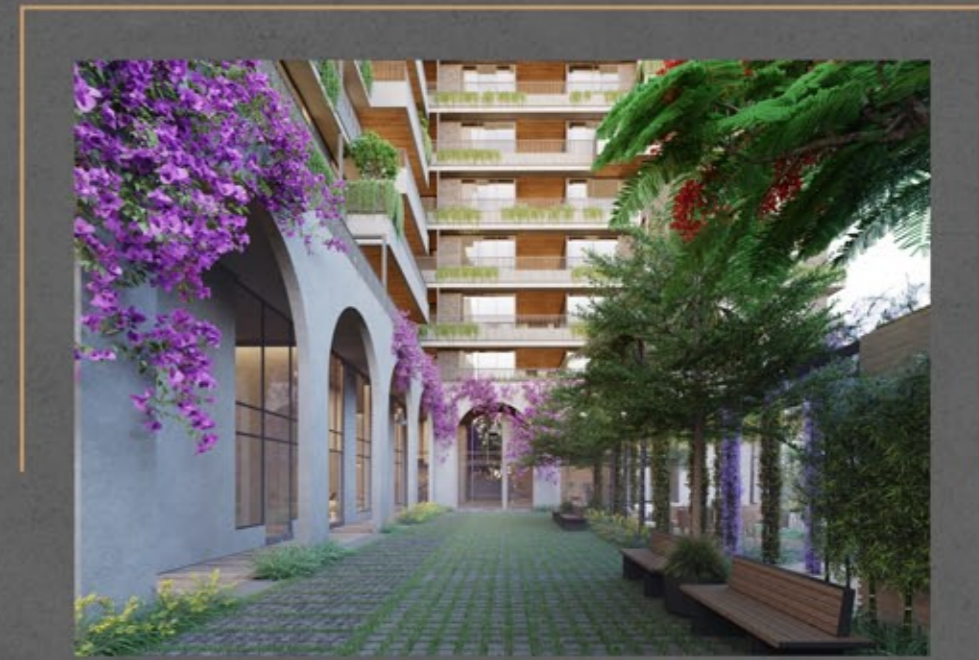
ANANT AMBIENCE

The boundless [Anant] ambience is distinguished with verdant greens that surround the vicinity and the plantation zone that rests within every abode.



20'
DOUBLE HEIGHT FOYER
for an ultra lavish entrance

THE GRAND FOYER THAT GREETES WITH CLASS!



ANANTARA ALPINES is designed to ensure that every visitor receives a welcoming ambience starting with a magnificent foyer, covered walking tracks, green pastures, and much more.

THE HOMELY SEATS AMIDST
SYLVAN SURROUNDINGS!



EMBRACE THE GREENS IN DIVINE TRANQUILLITY!

With a calming temple and the divine Jain Derasar within the premises, ANANTARA ALPINES presents a spiritual zone for residents to meditate and relax their senses in solitude.



- Jain Derasar
- Divine Temple
- Meditation Arena
- Landscaped Gardens
- Aqua Fountain





OPEN TO ECSTASY IN
VERDANT, VIBRANT LAWNS!



Lush Green
Garden



Swing
Park



Outdoor
Play Area



REVEL IN THE PARTY LOUNGE; AS MOMENTS AND MODERNITY BLEND IN YOUR LIVES!

TOUCHING THE SKYLINE;
COMPLETING YOUR LIVES!



ANANTARA ALPINES is not only about the greens and the amenities in the surroundings but also right at the top – as the terrace hosts multiple amenities including the kids' zone, an open yoga deck and a leisure arena for quiet gatherings.





WELCOME TO THE



ANANT LOCATION

The boundless (Anant) location offers multiple connectivity options that establish the importance of this location strategically as a landmark of sorts for the elite residents, with low-rise developments in close proximity to the best schools, malls, hospitals, clubs, and the like.

THE STRATEGIC LOCATION THAT CONNECTS LIVES WITH LIFESTYLE!

The unique location of ANANTARA ALPINES at THR establishes the importance of these lavish apartments, elevating accessibility measures for residents for a comfortable lifestyle that suits their lives.



ANANTARA ALPINES IS NEAR TO



SHOPPING MALLS

Acropolis Mall
Phoenix Mall



SCHOOLS

Zebar School
Udgam School
Anand Niketan School
Euro School
Vishwabharati School



HOSPITALS

Zydas Hospitals
SAL Hospital
Apex Heart Hospital
Global Hospital



PREMIUM SOCIETY

Hansvilla Residency
Madhuvan 22
Shangri-La Bungalows
Heritage Bungalows

SPECIFICATIONS

SALIENT ATTRIBUTES OF YOUR LUXURY PAD...WITH LEISURE!

- 70 apartments within two blocks
- Double height Hollow plinth with 10 floors and 2 basements
- Earthquake-resistant RCC frame structure
- AAC Cement block masonry
- Vastu Compliant Entry - All Apartments East-West Facing
- Italian marble in Drawing & Dining area
- Premium tile flooring in Master Bedrooms
- Full-height DGU Aluminium sliding glass windows
- AC piping provision in all rooms
- All doors with 8-ft. height
- Branded bath and sanitary fittings, Kohler or equivalent
- All Bathrooms with premium floor and wall tiling
- Video door phone for contactless communication with visitors/ vendors
- High-security digital door locks
- Branded electrical wires, switches, MCB & DB

TERMS & CONDITIONS:

All the architectural and interior images in the brochure, are merely simulated interpretations using computer graphics to enhance the customer understanding and are not factual images. • The color and general appearance of the flooring and wall tiles, sanitary ware & fittings, walls, ceilings, windows, doors, internal roads, trees, shrubbery etc. shown in the simulated computer graphics images are taken from the object libraries for the purpose of presentation and the prospective buyers of the concerned property are advised to refer to the construction specifications mentioned in the brochure. Additional amenities and/or utilities not mentioned or shown in the brochure but may be required as per the law, should be deemed to be forming part of the project by the purchaser. • All furniture including wardrobes, other sofa furnishings inter-alia curtains, mattresses, bed linen, upholstery etc., lights and other electrical fixtures and appliances like air-conditioners, refrigerators, TV's, telephones, laptops etc., any of the equipment, household accessories inter alia crockery and cutlery, rugs, carpets, decorative pieces and wall hangings, wall papers, utensils etc., apparels and all other consumable and movable items shown in the simulated images do not form part of the sale of any property by the developer. • GST, AMC/ AUDA Charges along with Torrent electrical charges including cable and Sub-station cost shall be borne by purchaser. Stamp duty, registration charges, or any other charges and taxes as & when levied by government or any of its body shall be borne by purchaser/ buyer/legal possession holder. • The Brochure is for restricted private circulation only and is not to be considered as a legal document with obligations for specific performance. It is meant for the purpose of conceptual presentation only. • Subject to Ahmedabad Jurisdiction only.

A. SHRIDHAR
BUILDING THOUGHTFULLY

DEVELOPER: **A. SHRIDHAR BUILDCON**

MBL.: **+91 83063 33777 | +91 99044 83736**
WEB: **www.ashridhar.com**

SITE ADDRESS: **ANANTARA ALPINES**, B/H. ORABELLA FLATS, EURO KIDS LANE, (THR) THALTEJ - HEBATPUR ROAD, THALTEJ, AHMEDABAD-380059.

ARCHITECT: **SAURABH VERMA - 9TH STREET ARCHITECTS**

STRUCTURE CONSULTANT: **ACHAL PARIKH**

LANDSCAPE DESIGNER: **JINAL PATEL - VPA**

MEP CONSULTANT: **SHASHIN SHAH - TRANS ENERGY**

LIGHTING: **PRANAV PATEL - ZION DZINE**

CONTRACTOR: **CHAVDA GROUP**

RERA NO.: PR/GJ/AHMEDABAD/AHMEDABAD CITY/AUDA/RAA09078/200921
RERA WEBSITE: www.gujrera.gujarat.gov.in

CORPORATE OFFICE: **A. SHRIDHAR CORPORATE HOUSE**, NEAR KAVERI SANGAM, SHILAJ CIRCLE, S.P. RING ROAD, SHILAJ, AHMEDABAD - 380059.

DOWNLOAD "A.SHRIDHAR" APP FROM   FOLLOW US ON 

A.SHRIDHAR
BUILDING THOUGHTFULLY