



DA DESIGN

Disclaimer

• Brochure content is for presentation purposes only and not legally binding. • Furnishings, fixtures, and appliances depicted are illustrative and not standard. • Developer may alter project amenities, specifications, and layouts as advised by architects. • Minor on-site changes during construction are possible and binding. • Dimensions are approximate and rounded off, with carpet area calculated as per RERA Act. • Images are representational and may not accurately depict the project. • North direction and key plan are approximate; customers should verify personally. • Key plan is not to scale and for representation only; visit project site for accurate location details.

DISCOVER
TIMELESS
LIVING



*We can not stop you
from ageing, but*

*we can definitely make you
relive the days of youth*





Forever is not a destination to be reached,
But a journey to be embraced.

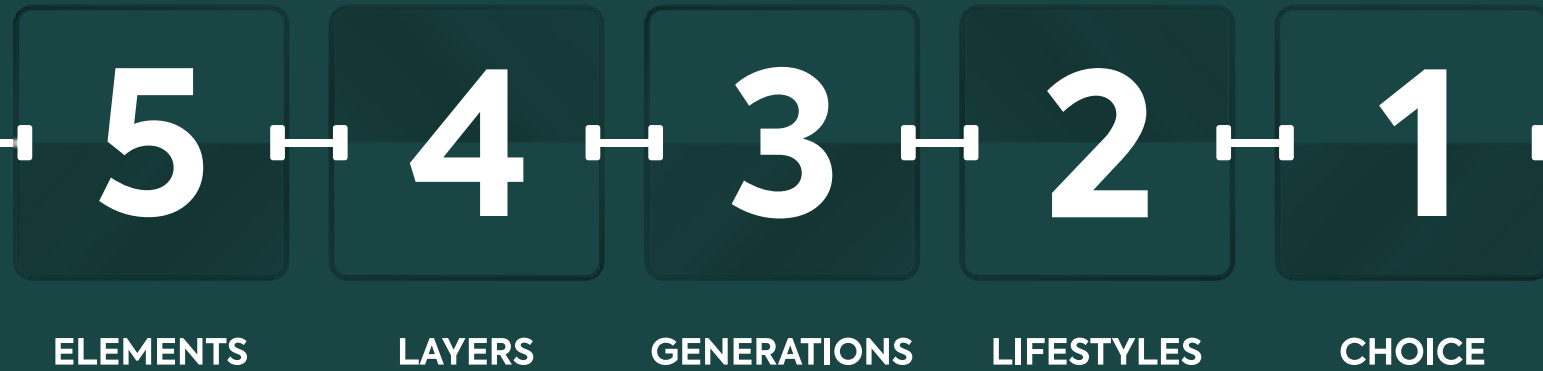
Forever is the essence of living,
A celebration of the present,
An acknowledgement of the past,
And a promise for the future.

In every heartbeat,
In every breath,

Forever pulses with the rhythm of life

A reminder that in every moment
We are Forever Young

*The journey of youthfulness
with our 5 cornerstones*

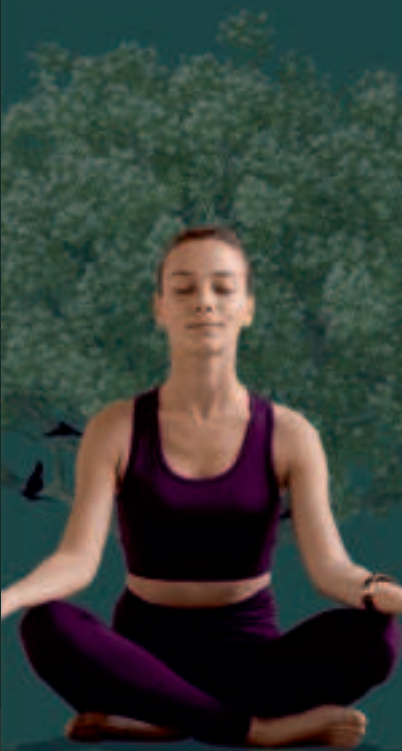


*Where the essence
& virtue of all
five nature elements
unite under one roof*



*Ascend through
4 tiers of meticulously
curated luxury spaces*

*Providing a
harmonious
haven for
3 generations*



*Sustainable living
meets modern comforts
in one seamless space*

*Choose a blend of
distinctive elements
for one-of-a-kind
living experience*





FOREVER

— YOUNG —

4BHK Enlivening Bungalows

Step into our exclusive enclave where ordinary fades away & bespoke luxury reigns supreme. Each bungalow is crafted for those who seek the extraordinary, blending fine materials and craftsmanship into personal masterpieces. Experience uncompromising excellence tailored to your discerning taste.

Luxury is Forever



Luxury Reserved for **21 Families**

Like a rare gem hidden deep within the earth, luxury holds its true brilliance when reserved for the exclusive few who understand its worth. In this exclusivity, luxury transcends mere materiality, becoming a symbol of status, sophistication, and a life lived with intentionality.

Beyond the physical grandeur lies a reminder that true luxury is not defined by extravagance alone but by the thoughtful curation of experiences that elevate the soul. A sanctuary where time slows down, and moments are savored with reverence.

Memories are Forever



PROMISE OF A SOPHISTICATED EXISTENCE WITH
UNCOMPROMISED CONVENIENCE AND ACCESSIBILITY



AN ELEVATED LIFESTYLE
FROM EVERY ANGLE



A symphony of Crucial Elements

GROUND Floor Plan

Legend

- | | |
|-----------------------|-------------------------|
| 01 VEHICULAR ENTRY | 14 CENTRAL PATHWAY |
| 02 PEDESTRIAN ENTRY | 15 EPDM FLOORING |
| 03 FLOORING LINE | 16 SAND BED |
| 04 SHRUB BEDS | 17 EPDM FLOORING |
| 05 ENTRANCE SCULPTURE | 18 LAWN |
| 06 MOVABLE SEATINGS | 19 GRASS-GRID FLOORING |
| 07 MOVABLE POTS | 20 ELEMENTAL LIGHT POLE |
| 08 GROUND COVERS | 21 YOGA DECK |
| 09 GRIT BED | 22 STAIRS TO BASEMENT |
| 10 ZEN GARDEN | 23 SPLASH POOL |
| 11 LINEAR SEATINGS | 24 STEPPED SEATING |
| 12 RAMP TO PATHWAY | 25 POOL-SIDE SEATING |
| 13 PERGOLA | |





SETTING A NEW STANDARD
FOR MODERN LIVING



A blueprint for a Lifestyle

BASEMENT Floor Plan

Legend

- | | |
|---|--------------------|
| 01 ENTRANCE FEATURE WALL WITH SCULPTURE | 06 SALON ROOM |
| 02 CLUBHOUSE ENTRANCE | 07 STEAM ROOM |
| 03 OTS STAIRCASE | 08 WASHROOM |
| 04 LOUNGE / INDOOR GAMES AREA | 09 MEDIA ROOM |
| 05 WELLNESS CENTRE | 10 VISITOR PARKING |
| | 11 STORE ROOM |
| | 12 HELPER'S TOILET |





WHERE INDIVIDUAL PATHS CONVERGE TO
FORM A MOSAIC OF SHARED MEMORIES



Each element in harmony

Beyond the hustle and bustle of daily life, lies a haven where every aspect finds its designated space.

In this retreat beneath the surface, each area plays its part with grace, echoing the universal harmony where every element, every individual, finds its rightful place in the intricate fabric of existence.

 **ALLOTTED 3 CAR PARKINGS**

 **NO VEHICLE GROUND FLOOR**

 **PRE-INSTALLED LIFT**



Freedom from boundaries

A cathedral of possibilities, where walls seem to stretch upwards, inviting the spirit to soar alongside them.

Experience the essence of expansive living, enveloped by the beauty of the natural world, that makes us realize the magnificence of existence itself.

 **DOUBLE HEIGHTED LIVING ROOM**

 **SPACIOUS CONSTRUCTION AREA**

 **GREEN BUILDING CERTIFIED**



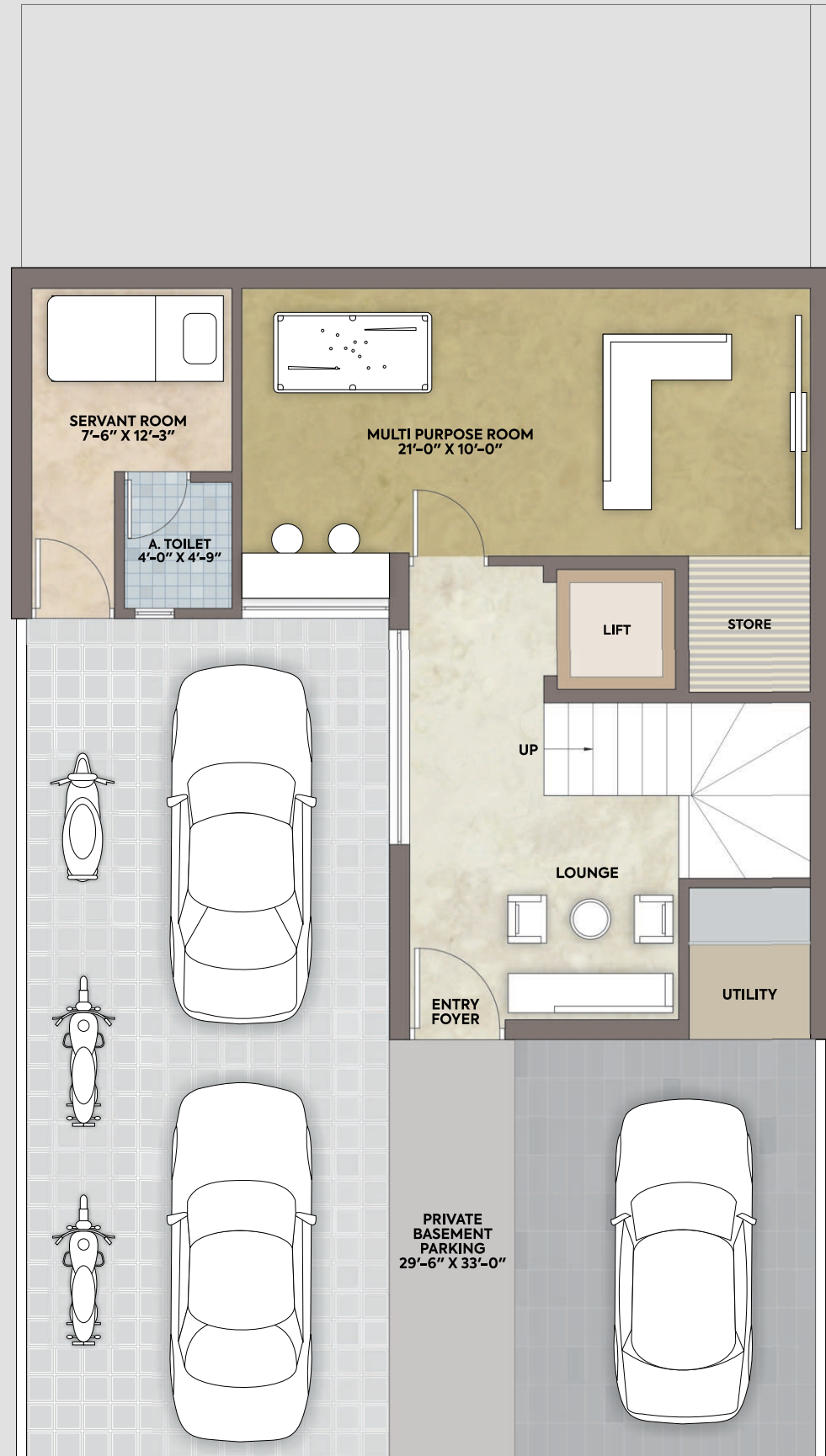
masterpiece

A Walk till the Top

Fulfill your destiny of owning 4 levels of luxury

- EXCLUSIVELY PRIVATE
- SEMI-PRIVATE
- PUBLIC
- SERVICE FLOOR





PRIVATE Basement

*Convenience & opulence
deeply rooted in the foundation*

LAYER 1	LAYER 2	LAYER 3	LAYER 4
---------	---------	---------	---------

3 Private
Car Parking

EV Point

Servant
Room

Private Lift

Multipurpose
Room

Lounge

Private
Car Wash

Storage





GROUND Floor

Grounded living with sky high aspirations

LAYER 1

LAYER 2

LAYER 3

LAYER 4

Double Heighted Living Room

Dining Attached with a Garden

Front Entry Garden

Elder Friendly Washroom

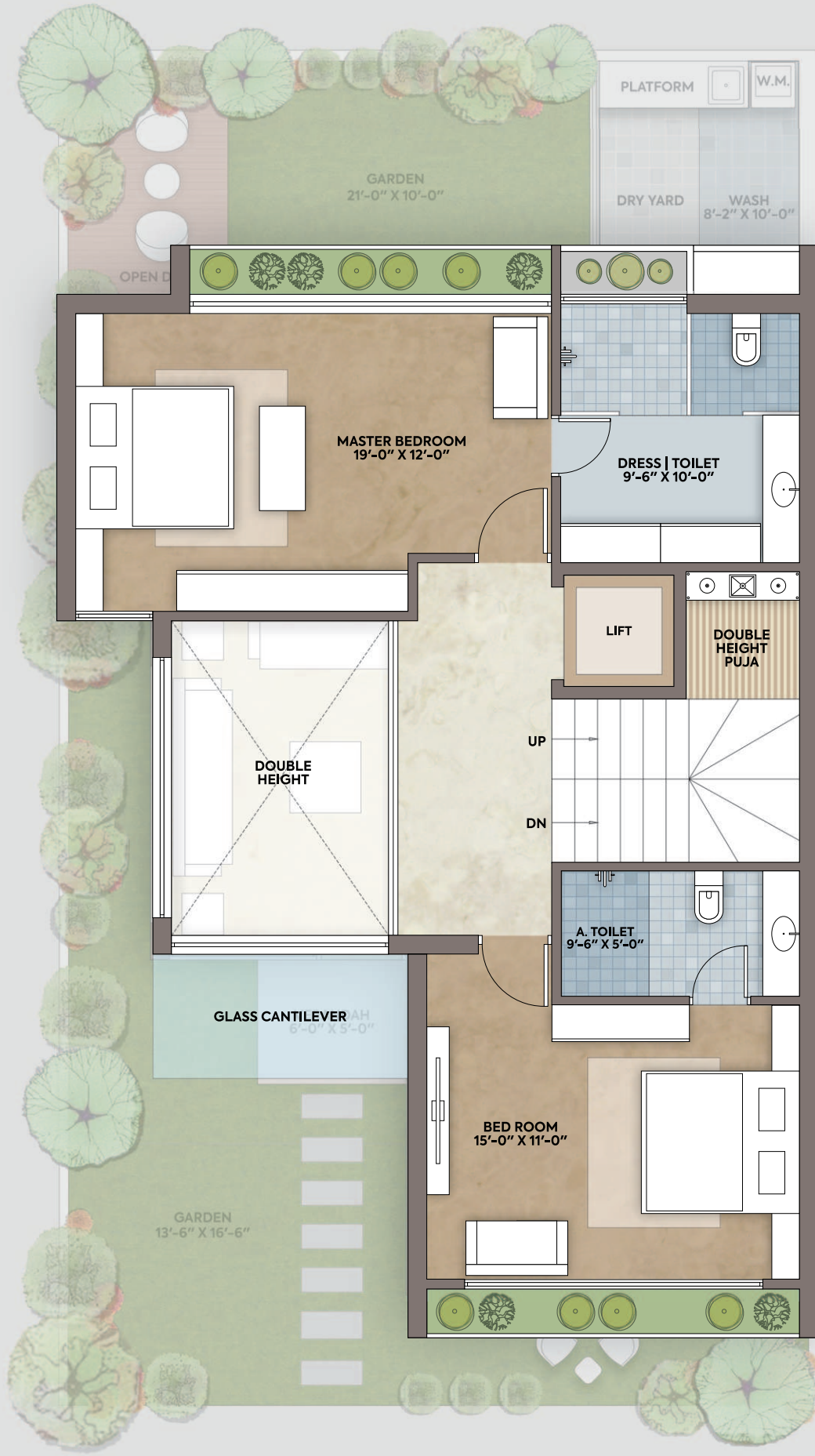
Kitchen & Washyard

Back Garden with Deck

Garden Facing Bedroom

Powder Room





FIRST Floor

Where blooms meet bedrooms with a breath of fresh air in every nook

- LAYER 1
- LAYER 2
- LAYER 3
- LAYER 4

Master Bedroom

Garden Facing

Double Height Pooja Space

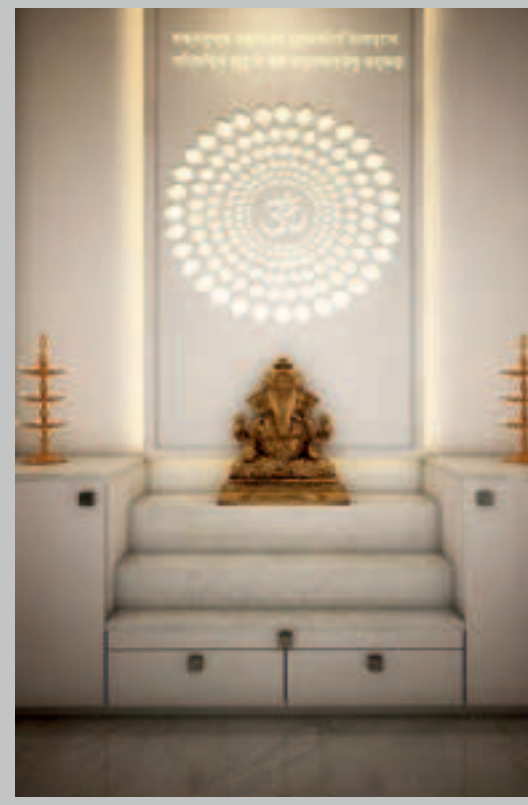
Open Shower

Children Room

Dressing Room with Toilet

Cross Ventilation

Store





SECOND Floor

Option I: Bedroom with Lounge

An opulent & sophisticated experience that is second to none

LAYER 1 LAYER 2 LAYER 3 **LAYER 4**

Master Bedroom

Family Lounge

Cantilevered Open Terrace





SECOND Floor

Option II: Suite Room

Where luxurious living is as sweet as a dream

- LAYER 1
- LAYER 2
- LAYER 3
- LAYER 4

Presidential Master Suite Room

Cantilevered Open Terrace





THE ENCHANTING HORIZON
AT YOUR FOOTSTEPS



WHERE LUXURY & SERENITY
INTERTWINE SEAMLESSLY



Clubhouse: Where the community is knit

A subterranean recreational realm, a sanctuary for relaxation and personal growth.

A place for individuals to come together and nurture their mind, body, and soul, fostering a sense of community and personal fulfillment.

Be greeted by an atmosphere designed to inspire and elevate your well-being.

AMENITIES

breathing life into the essence of youth



Media Room



Lounge



Zen Garden



Party Lawn



Sauna



Parking



Landscape Garden



Senior Citizen Area



Children Play Area



Wellness Centre



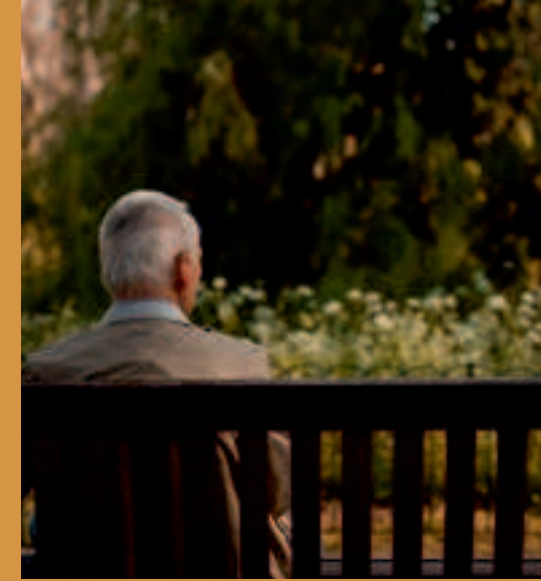
Splash Pool



Club House



No Vehicle Zone



SPECIFICATIONS

STRUCTURE

Earthquake Resistant Structure

PLASTER & FINISHES

Outside Double Coat Plaster,
Inside Single Coat with Punning

COLOUR & FINISHES

Inside Punning, Outside Texture
Surface with Weather Proof
Acrylic Paint

FLOORING

Full Body Large Size Vitrified
Tiles in All Rooms

DOORS

All Internal Doors with
Artificial Granite Frame
& Water Proof Shutters

MAIN DOOR

Veneer Finish Heighted Door

KITCHEN PLATFORM

Quartz / Artificial Granite or
Smiler with Cultural Marble
Sink & Glazed Dado Tiles

MASONRY

Cement Brick Masonry

CEILING

Exposed Ceiling Work

LIFT

Glass Door Automatic Lift
- Omega, Otis, Kone, Gulf,
or Similar

FITTINGS & ACCESSORY

Jaquar, American Standard,
Kohler, Grohe or Similar.

WINDOWS

Artificial Granite Finish Frame
& Company Domel Series
Aluminum Sections
- Jindal / Nalco or Similar

GLAZING & GLASS

Saint Gobain / Modiguard /
Gold Plus Glass or Similar

TOILET FLOORING

Large Size Vitrified Tiles
Flooring & Dado

ELECTRIFICATION

3 Phase Wiring - Finolex,
RR Kabel, Polycab or Similar

PLUMBING

Astral, Supreme or Similar

SOLAR SYSTEM

Roof Top Solar & Solar Water
Heater upto 3 KW.

WATER SUPPLY

24 Hours Water Supply with
Automatic Sensor System &
Softner & Pressure Pump

FIRE SYSTEM

Fire System in Basement
as per Norms

SECURITY

Digital Secure Entry & C.C.T.V.
Camera in Basement &
Ground Floor Main Entry &
in Required Common Area

Green Building Features



SOLAR WATER
HEATER



IGBC



WATER EFFICIENT
PLUMBING FIXTURES



RAIN WATER
HARVESTING



WASTE MANAGEMENT
SYSTEM



ELECTRIC VEHICLE
CHARGING POINT



UNIVERSAL DESIGN
FOR DIFFERENTLY ABLED



SOLAR PANEL BACKUP
FOR COMMON USE



SEPARATE DRAINAGE AND
WATER SYSTEM



ENERGY EFFICIENT
LIGHTING FIXTURES



USE OF LOW
VOC MATERIALS

Pre Installed Solar Power, Solar Water Heater

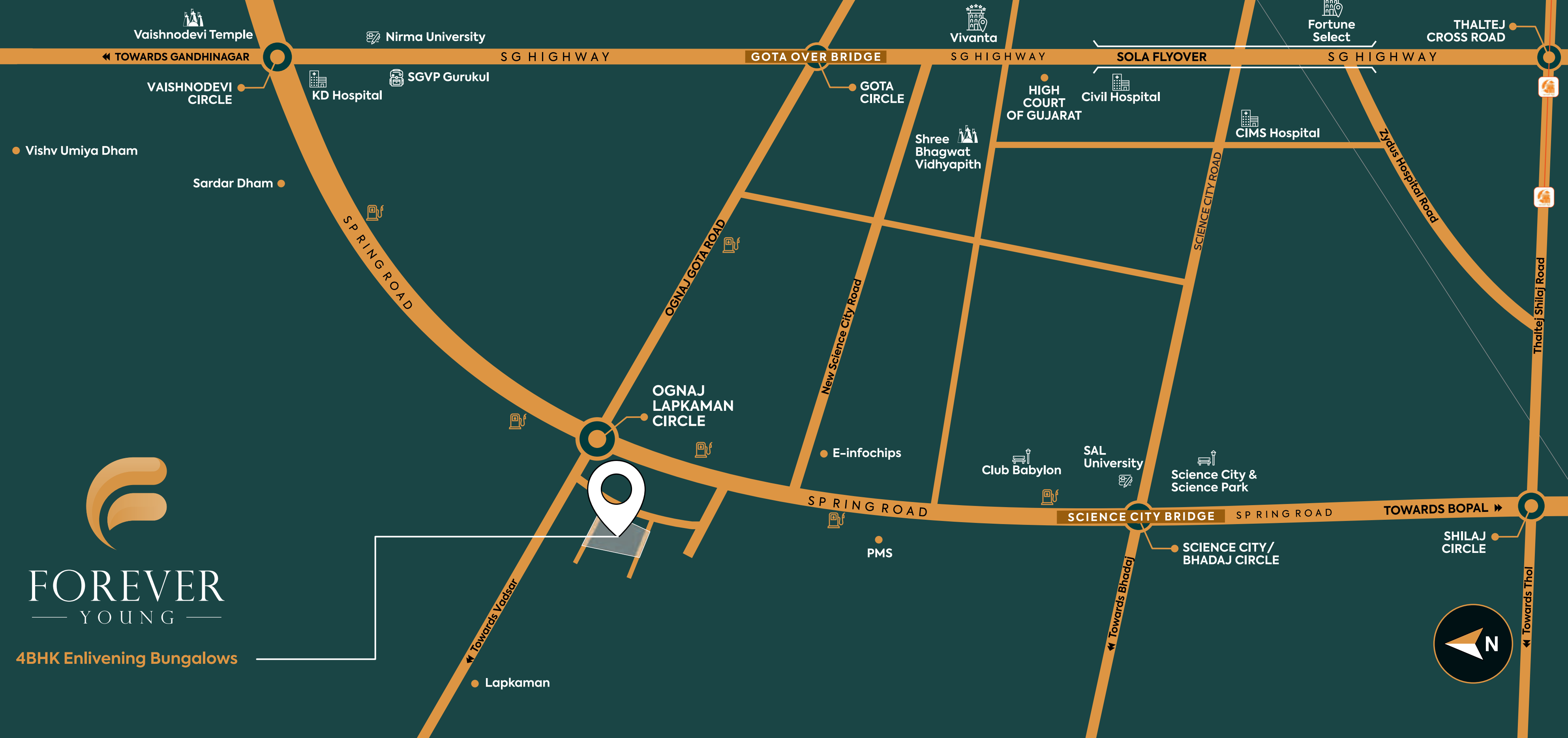


FOREVER
— YOUNG —

4BHK Enlivening Bungalows



● Lapkaman



Vaishnodevi Temple

Nirma University

Vivanta

Fortune Select

THALTEJ CROSS ROAD

◀ TOWARDS GANDHINAGAR

SG HIGHWAY

GOTA OVER BRIDGE

SG HIGHWAY

SOLA FLYOVER

SG HIGHWAY

VAISHNODEVI CIRCLE

KD Hospital

SGVP Gurukul

GOTA CIRCLE

HIGH COURT OF GUJARAT

Civil Hospital

CIMS Hospital

Zydus Hospital Road

● Vishv Umiya Dham

Sardar Dham ●

SPRING ROAD

OGNAJ GOTA ROAD

New Science City Road

SCIENCE CITY ROAD

Thaltej Shilaj Road

OGNAJ LAPKAMAN CIRCLE

E-infochips

Club Babylon

SAL University

Science City & Science Park

SPRING ROAD

PMS

SCIENCE CITY BRIDGE

SPRING ROAD

TOWARDS BOPAL ▶

SCIENCE CITY / BHADAJ CIRCLE

SHILAJ CIRCLE

◀ Towards Vadisar

◀ Towards Bhadaj

◀ Towards Thol



Ognaj Circle

Discover an oasis of luxury living in the vibrant and rapidly growing locale of Ognaj in Ahmedabad. Nestled in the vicinity of the Sardar Patel Ring Road, Forever Young offers unparalleled accessibility to malls, schools, colleges, hospitals, and various commercial and recreational centers. Such proximity promises convenience like never before. Ognaj, known for its safety, cleanliness, and serenity, provides an ideal setting for a sophisticated lifestyle.

01-10 minutes

- SCIENCE CITY
- CLUB BABYLON
- TAJ SKYLINE
- SCHMOOZE RESTRO CAFÉ
- KD HOSPITAL
- MARENGO CIMS HOSPITAL
- ZYDUS CORPORATE PARK
- GUJARAT HIGH COURT
- OGNAJ JAIN DERASAR
- VAISHNODEVI MANDIR

11-14 minutes

- GRACE COFFEE
- LAVISH DE BISTRO
- CAFÉ BEATRIX
- LIFELINE MULTISPECIALITY HOSPITAL
- APOLLO INTERNATIONAL SCHOOL
- HIRAMANI SCHOOL
- SGVP INTERNATIONAL SCHOOL
- NIRMA UNIVERSITY
- HCG HOSPITAL
- ZYDUS HOSPITAL
- BOXPARK

15-30 minutes

- BAAP NO BAGICHO
- SGVP HOLISTIC HOSPITAL
- THE NEW TULIP INTERNATIONAL SCHOOL
- FUN BLAST
- PALLADIUM MALL
- SHOTT SBR
- NEW KARNAVATI CLUB
- NEW RAJPATH CLUB
- ANAND NIKETAN SCHOOL, SHILAJ
- DPS, BOPAL
- THOL BIRD SANCTUARY



Project by



Forever Young is a joint venture project by two prominent real estate groups – Reneev Developers & Ganesh Group. These two groups bring together a collaboration of a pool of strong-headed, most trusted, and renowned real estate experts with a cumulative experience of multi decades.

Driven with commitment to excellence in development and providing a lifestyle of value, the personalities behind these two groups have successfully delivered 20+ projects in the past.

With fine craftsmanship and expertise, they have always focused on providing a remarkable lifestyle & memorable experience to those who associate with them as homeowners, and have won the trust of 1000+ families. With Forever Young, they have just taken this aspiration to a much grander level and placed customer centricity at the forefront.

The Collaborators

ARCHITECT

Aakar Architects

MANU PATEL | HARSH PATEL

LANDSCAPE ARCHITECT

Studio 2+2

JANKI | SHIVANSH

MEP CONSULTANTS

Trans Energy

STRUCTURAL ENGINEER

Mr. Bipin Agrawal

RERA NO. : PR/GJ/AHMEDABAD/DASKROI/Ahmedabad Municipal Corporation/RAA13216/300324/151227

