

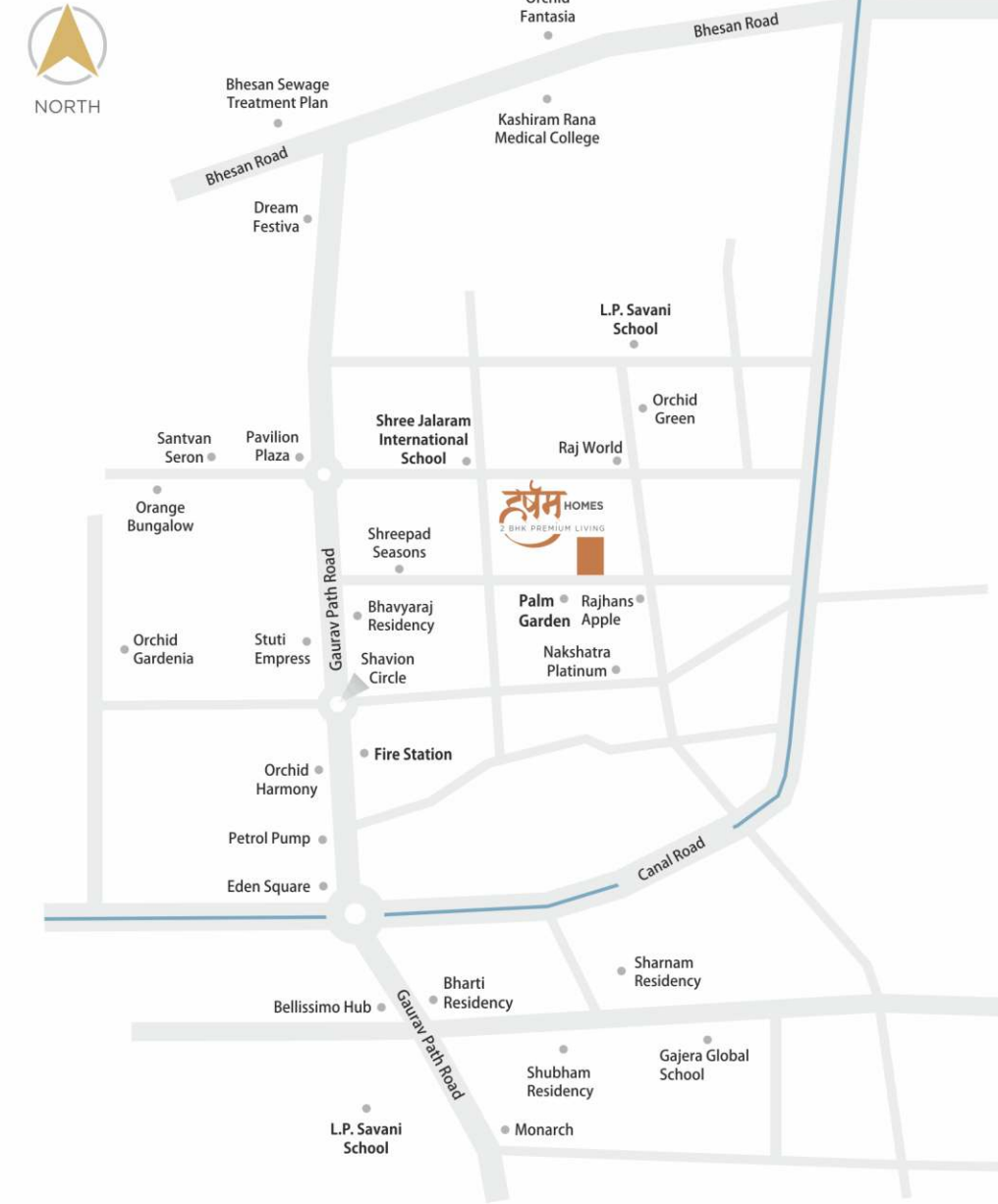


Sensational abodes for the elite few

A location that connects you to everything that is important in life. There isn't a better address than this.



LOCATION MAP



Address

Harsham Homes, T.P. 8, F.P. 59, Opp. Pam Garden, Nr. Rajhansh Apples, Or Rajhansh Orange, Palanpur, Surat. 395009

Contact Details

MEHUL PATEL
97250 41114

A Project By



WE ARE MAKE HOME NOT FLAT

Architect



Rera registration Number : PR/GJ/SURAT/SURAT CITY/SUDA/RAAI2504/211023
Website : gujrerar1.gujarat.gov.in

Legal Disclaimer

All furniture and objects shown in the plan or illustrative image are for presentation & understanding purpose only. By no means it form a part of final deliverable product. All the elements, objects, treatment, material, equipment & colour scheme shown are artisan's impression and purely for presentation purpose only. By no means, it will form a part of the amenities, features or specification of our final products. Dimensions mention in building plan, are wall-to-wall dimensions & it does not include finishing details like plaster, putty & dado tiles. All amenities are shown in this document are for artist's impression which does not in the scope of builder or developer.

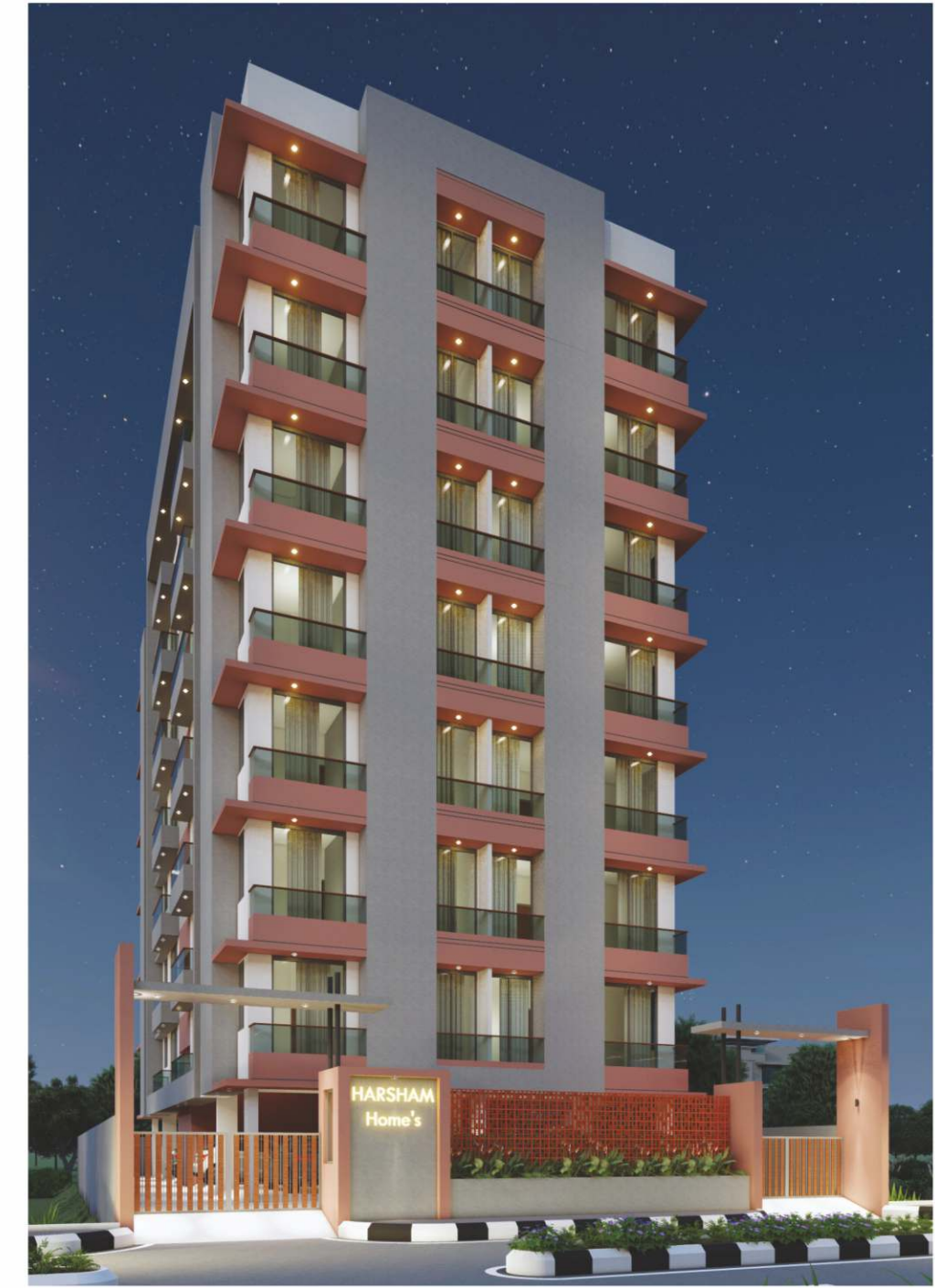
Terms And Conditions

All rights reserved by the developer to make any changes in plan, elevation & details which will be binding to all members. Stamp duty, GST, Registration charges, G.E.B & S.M.C charges, Legal charges, Maintenance deposit or any other charges and taxes as when levied by government or any of its body shall be borne by purchaser/buyer/legal possession holder. Irregular payment shall lead to cancellation of booking. Installation of A.C units will be permitted at the designated spots and nowhere else. Changes which affects the elevation and structure would not be permitted. Any internal changes would not be permitted without permission of developer. Variation in colour, design, size of material used in this project may occur and can be changed without prior notice. This brochure is just for easy presentation of project and should not be treated as legal documents.

हर्षम HOMES

2 BHK PREMIUM LIVING

SINGLE TOWER CAMPUS



2 BHK
PREMIUM LIVING



SPECIFICATIONS

SPECIFICATIONS

- Earthquake resistant structural design.
- 2' x 2' vitrified tiles flooring in all rooms.
- Black granite kitchen platform with good quality kitchen sink & tiles up to lintel level.
- Sal wood frames flush door with attractive locks & hardware.
- Anodised aluminium windows with granite sill.
- All walls with white putty finish.
- Concealed wiring with superior quality accessories.
- Good quality C.P. Fittings and sanitary wave.
- All toilets with designer glazed tiles up to lintel level.

Basement
Layout Floor Plan

2 BHK PREMIUM LIVING



Ground
Layout Floor Plan



7 Floor Lifestyle Living



Only 26 Units In Campus

1st To 6th
Typical Floor Plan



C.C.T.V. Camera In Common Area



Fire Safety For Campus.

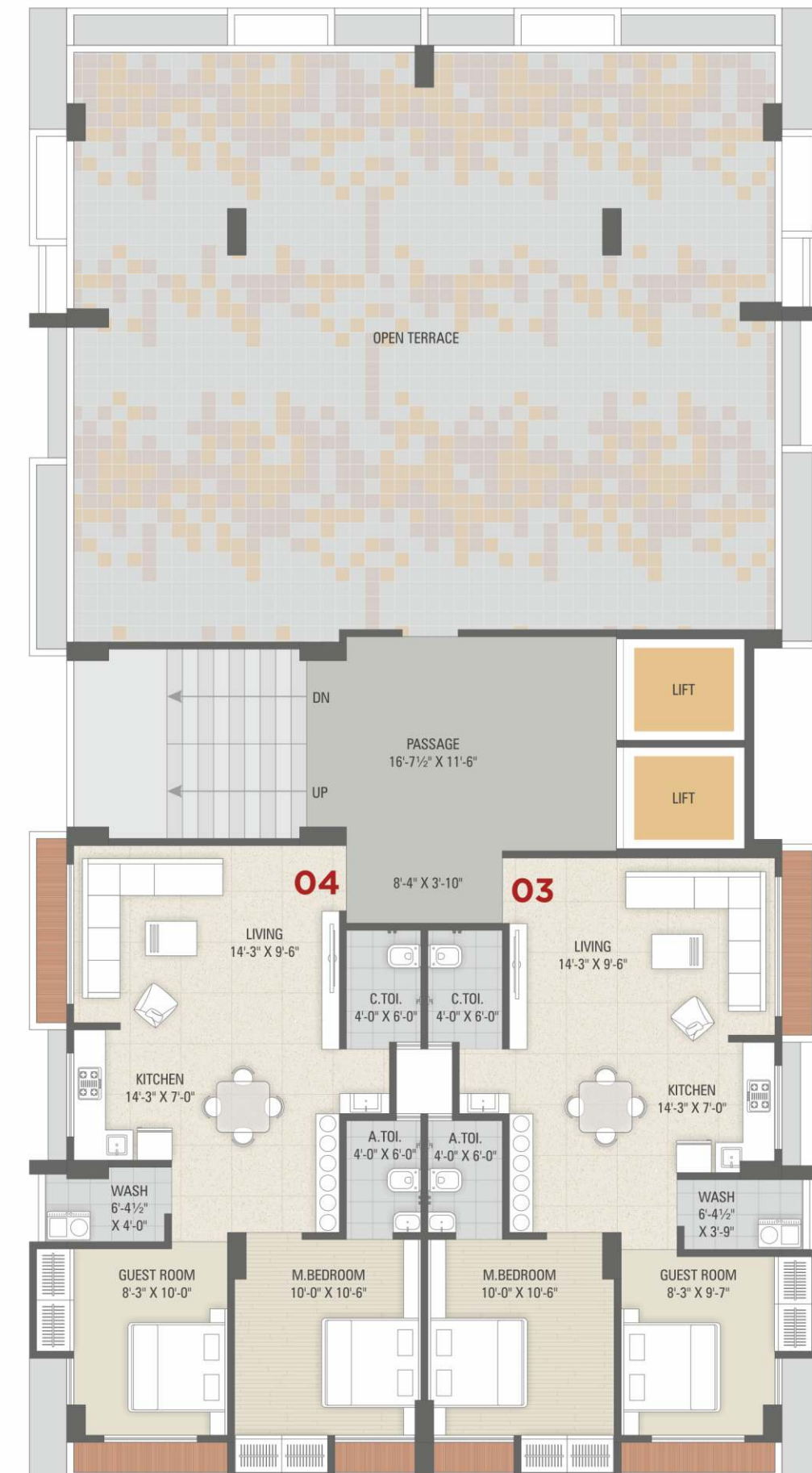
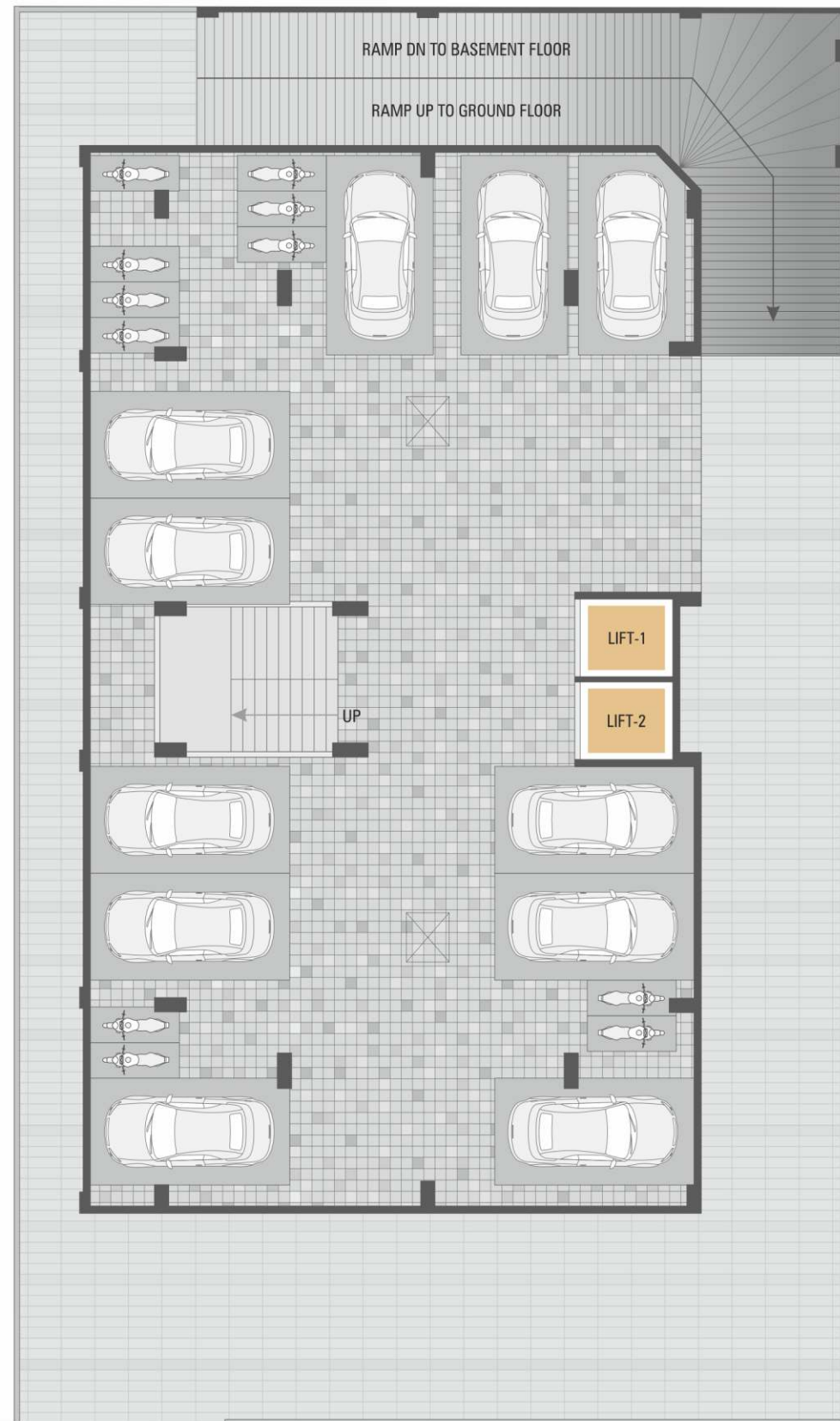
7th
Floor Plan



2 Fully Auto Door Lift



Power Backup Generator



M A I N R O A D

M A I N R O A D

M A I N R O A D

M A I N R O A D