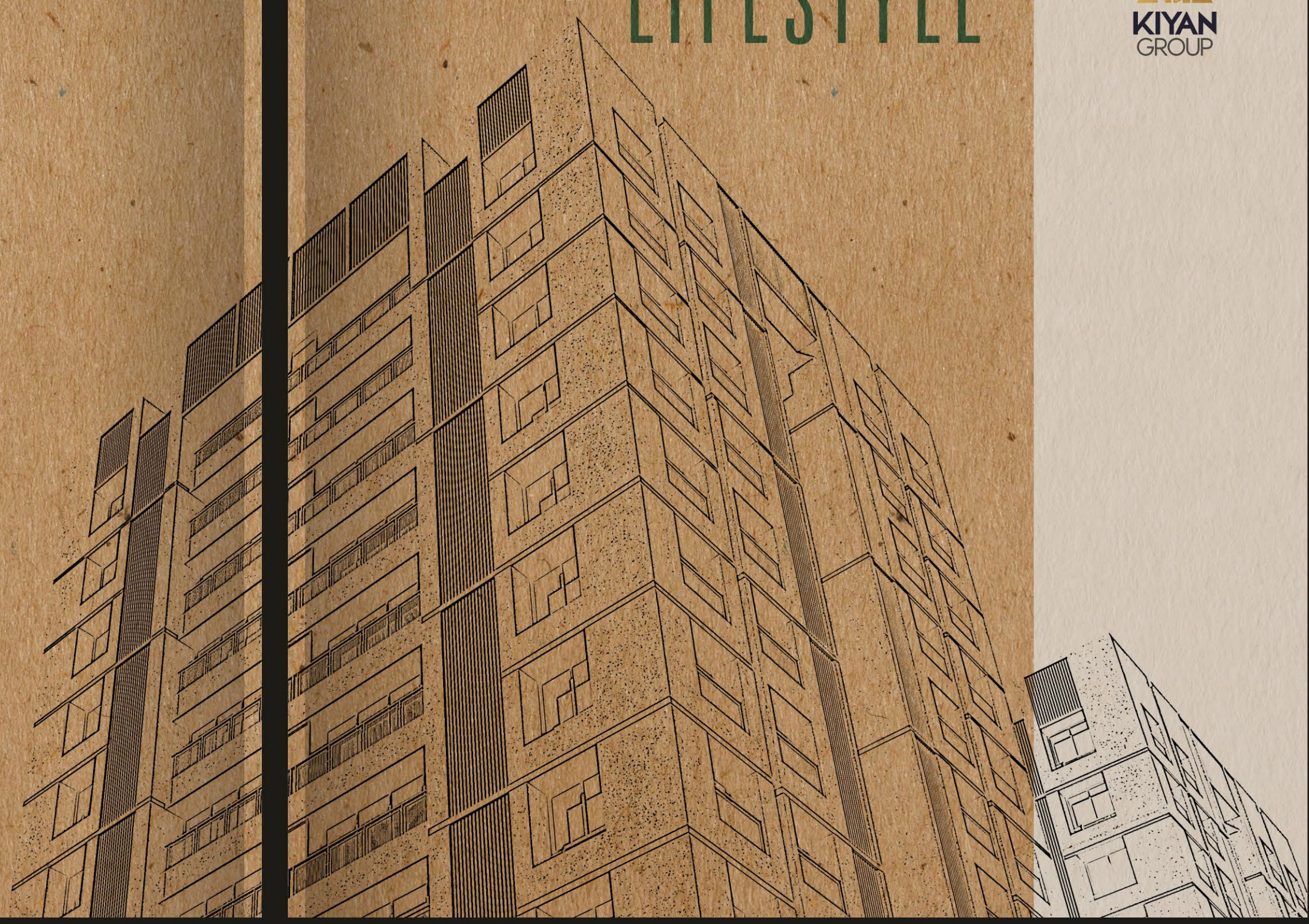


website: www.orchidgroupsurat.com
E-mail: info@orchidgroupsurat.com

ENJOY THE LIFESTYLE

A PROJECT BY





About Group

Inspired Leadership, Superb Services

Orchid Group was established in 2013 with the aim of providing professional and value-added services to prospective clients in Surat city. At Orchid Group, we will ensure transparency and value for money in all transactions making it a worry-free and highly productive experience for our clients. This will be achieved by focussing proactively identifying, recommending and by helping clients acquire properties that will give higher Return on Investment and a solid lifetime asset. Our company is based in Gujarat (Surat) primarily providing assistance to clients in Selling and Buying, Apartments, Individual Houses, Farmhouses and Builder Floor apartments at very competitive and attractive prices. Clients satisfaction is our priority. Please contact us through email or telephone for all your requirements. At Orchid Group, the deal is always better!

Vision & Mission

Our Vision is of an Outstanding Organisation with Exceptional Team members. Workplace Of Choice & Our Mission is Shaping up Together, Inspired Leadership & Superb Services



A PROJECT BY





ORCHID GARDENIA

2 & 3 BHK APARTMENTS

Make transition from the wild past to a Grand present Living



LOCATION

Orchid Gardenia is close to the Palanpore fire station, also has a nearby BRTS Facility and Proposed Metro Route

CONNECTIVITY

School	1.0 km
College	1.5 km
Bus station	4.5 km
BRTS	2.5 km
Railway station	7.5 km
Airport	9.7 km
Hospital	0.5 km
CNG pump	1.4 km
Petrol pump	0.19 km
Proposed Metro Station	1.0 km
Garden	0.45 km



Living re-opens elegance every new morning

Orchid Gardenia is a pleasant livable residency.
The manner in which it is constructed ensures excellent workmanship and best of the best resources.
Put your right foot forward and the entrance of Orchid Gardenia is ready to welcome you!



ORCHID
GARDENIA
2 & 3 BHK APARTMENTS



View your Living comfort : from front, side, back or geometric Top

Elevation of Orchid Gardenia ensures complete privacy and elated height.
It opens up treasure of happiness to see, to gain and to experience!



ORCHID
GARDENIA
2 & 3 BHK APARTMENTS






ORCHID
GARDENIA
 2 & 3 BHK APARTMENTS

AMENITIES

 Gazebo	 Jogging Track	 Gym	 Landscaping
 Security Cabin	 Senior Citizen Sitting	 Garden Area	 Yoga / Meditation Zone
 Basement Parking	 1 Car Allotted Parking	 Net Cricket	 Club House
 Gas Line with Geyser Point	 Generator Back Up Facility	 Gorgeous Entrance Gate	 Pick Up & Drop Off Zone
 CCTV Camera	 Children Play Area	 Skating Rink	 Multipurpose Court

ORCHID GARDENIA

2 & 3 BHK APARTMENTS

TYPICAL LAYOUT 



18.00 MT. WIDE T.P. ROAD



TYPE A | B N



TYPE C | D | E N

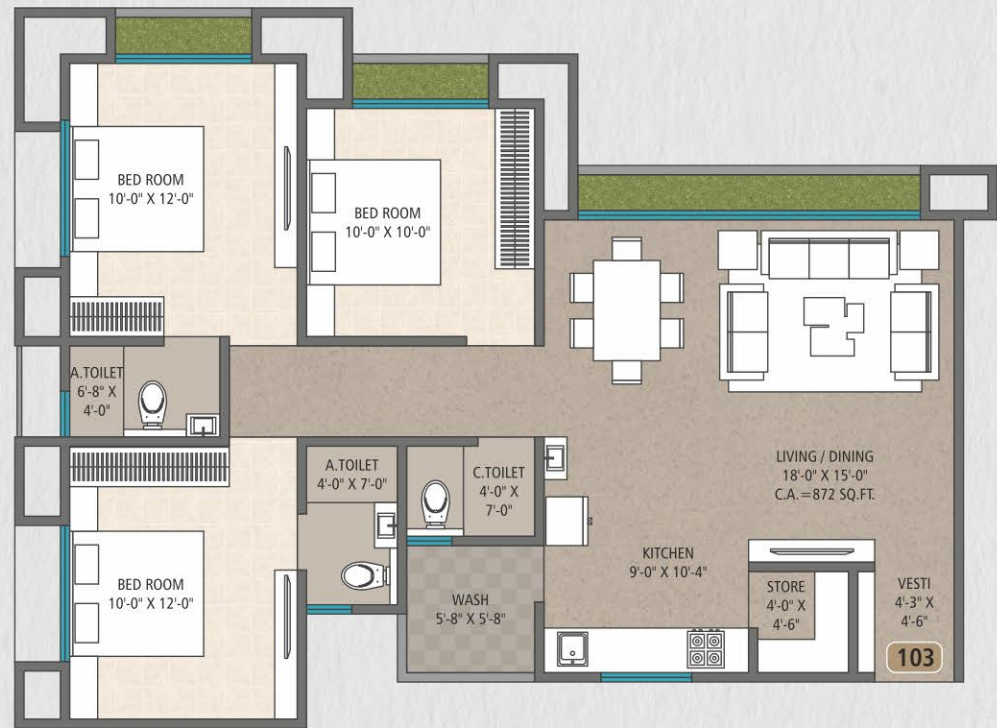


ORCHID GARDENIA

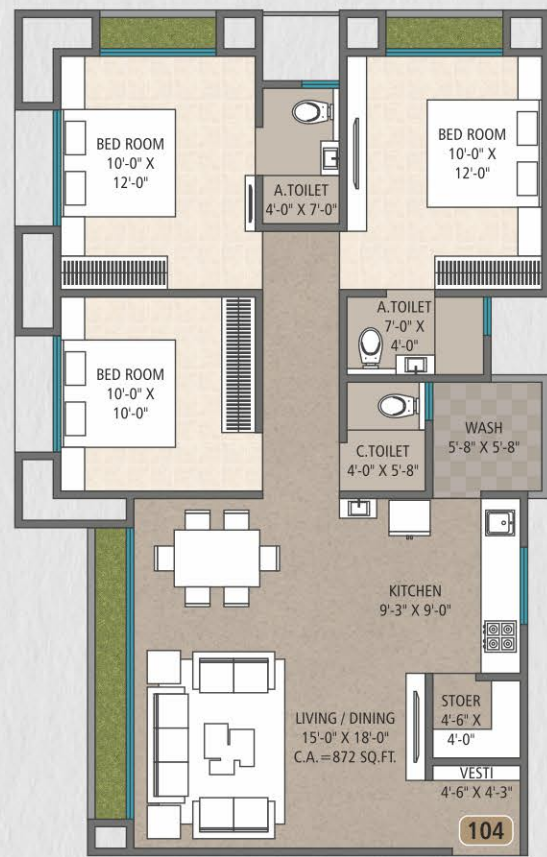
2 & 3 BHK APARTMENTS

2 BHK

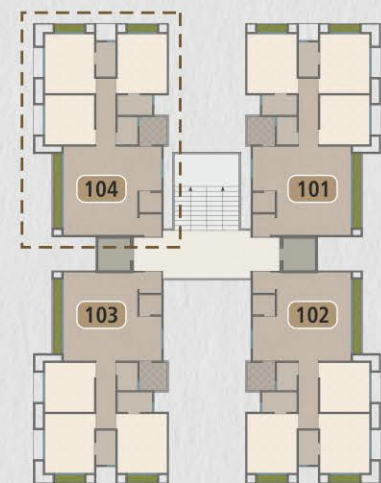




TYPE F



TYPE G | H



ORCHID GARDENIA

2 & 3 BHK APARTMENTS

3 BHK



Living in an Icon now synonymous with Status

Orchid Gardenia is with very spacious residences. The Gardenia has style, luxury and value for privy holders. Every nook and corner has a special touch. Ultimately, it is your status that counts.



Jogging Track



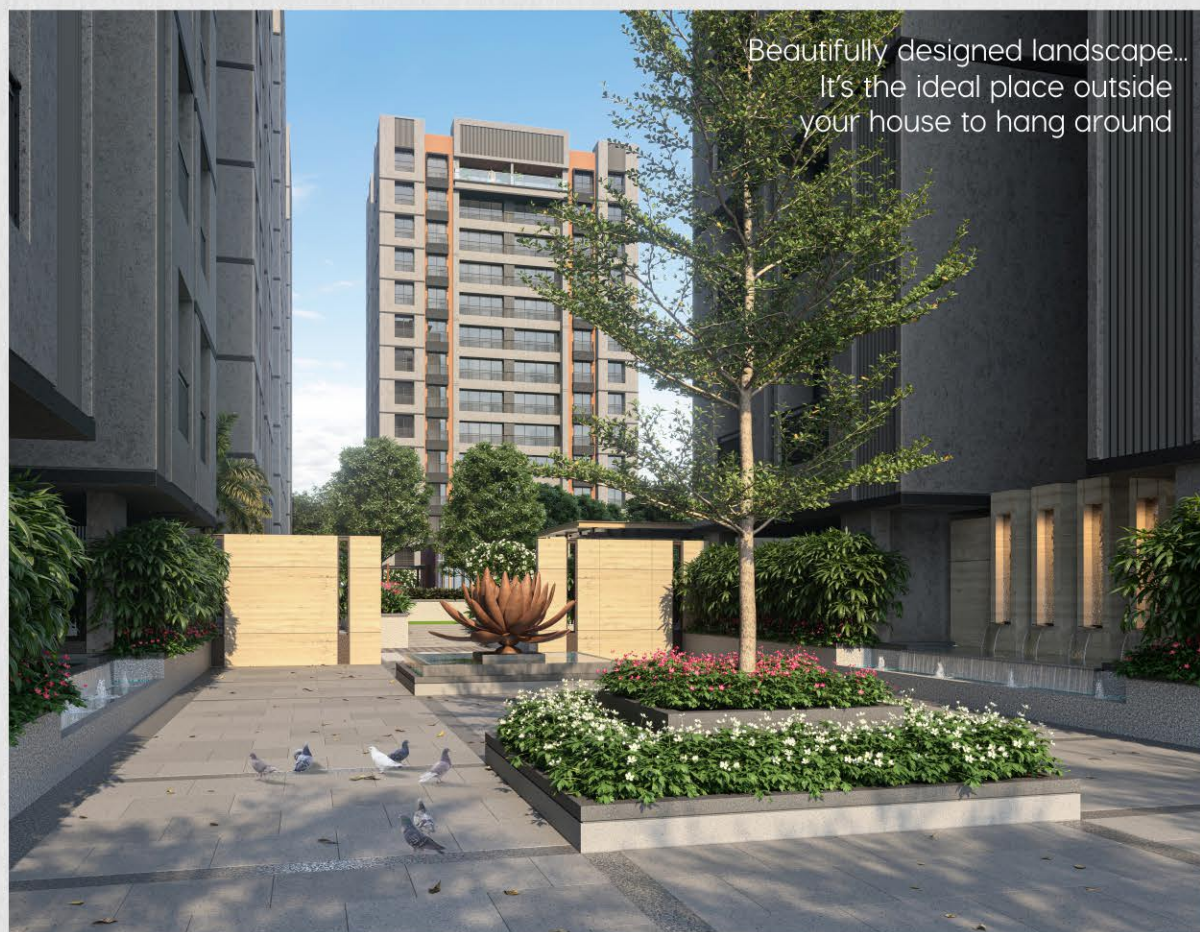
ORCHID
GARDENIA
2 & 3 BHK APARTMENTS



Living Room



Bed Room





ClubHouse **CLUBHOUSE**

Get your life enriched at Orchid Gardenia with amenities that suit your sophisticated lifestyle to the while pampering your senses and meeting your needs.

Endearing amenities those are a class apart



Multipurpose Court



Net Cricket



Children Play Area



S P E C I F I C A T I O N S

BUILDING INTERNAL

■ Flooring

- Vitrified tiles flooring 24" X 24" in hall, kitchen and 24" X 24" in all bedroom.

■ Internal wall

- Mala plaster with birla white finish.

■ Electrification

- ISI standard concealed copper wiring with sufficient point in all rooms.
- 24 hour auto-generator of 1.5 amp backup for each flat.
- A.C., T.V. point.
- Standard make modular switches & accessories.
- Municipal water supply.
- Gujarat gas connection point for kitchen and geyser point.

■ Kitchen & Storage

- Granite kitchen platform with standard company sink and decorative glazed tiles on wall up to ceiling level.
- Common wash basin.
- Kota flooring and glazed tiles dado with granite sill tip in wash area.
- 2 gas line points, one for kitchen & second for gas geyser in wash area.

■ Bath Fitting & Plumbing

- Anti-skid tiles flooring and well-designed wall tiles up to lintel level.
- Single level concealed diverter with shower.
- Standard quality sanitary fitting.
- Western W.C. in all bathroom.
- CPVC / UPVC piping for plumbing.
- Hot & cold water line in all bathrooms of flat.
- Openable ceiling in all bathroom & wash room area.

■ Door & Windows

- Attractive main door with salwood frame.
- Internal flush door with granite frame.
- Standard hardware fitting.
- Standard anodized Domal aluminum section windows with single vision reflective glass.
- Windows with granite sill inside with marble stone sill outside.
- Door lock of standard make.

CAMPUS FEATURE

- Modern entrance gate with elegant compound wall & security cabin.
- Gorgeous entrance foyer.
- 1 allotted car parking with single basement.
- Security system with CCTV camera in common areas including lift.
- Children play area with latest equipment.
- Open yoga & meditation zone.
- Bore well for rain water harvesting.
- Lush green modern designed landscape garden.
- Tree plantation in campus.
- Internally RCC trimix finished road with block paving.
- Installed dustbins in campus to keep campus clean.

BUILDING EXTERNAL

- Earthquake resistant RCC frame structure.
- Double coat plaster with texture on external wall.
- Weather shield MAX / APEX ultima paint on external wall.
- 24 hour auto-generator backup for common area & 1.5 amp backup for each flat.
- Well-designed furnished building entrance foyer with reception & waiting lounge.
- Staircase & lift lobby finished with granite & vitrified tiles.
- 2 elevators with auto door feature in each building.
- S.M.C. water with underground & overhead water tank.
- Separate bore well for each building.
- 3 layer waterproofing with chemical treatment & china mosaic on terrace.
- Fire safety as per GDCR norms and execution as per details given by fire consultant.
- Attractive balcony lighting.



ARCHITECT



Site Address: Orchid Gardenia, F.P-61, T.P-9, Opp. Shavion, Gauravpath road, Palanpore, Surat

Contact: +91 94284 36007 | +91 63572 88000 | +91 63572 99000

website: www.orchidgroupsurat.com | **E-mail:** info@orchidgroupsurat.com

WE REQUEST

- Stamp duty, registration charges, legal charges, society maintenance charges (from the date of BUC) etc. shall be borne by the purchaser.
- GST, TDS & all other Taxes levied in future will be borne by the purchaser.
- Any Additional charges or Duties levied by the government / local authorities during or after the completion of the scheme like SMC Tax, will be borne by the purchaser.
- In the interest continual developments in design & quality of construction, the developer reserves all rights to make any changes in the scheme including technical specification, designs, planning, layout & all purchaser shall abide by such changes.
- Changes / Alteration of any Nature including elevation, exterior color scheme, balcony Grill or any other changes affecting the overall design concept & lookout of the scheme are strictly not permitted during or after the completion of the scheme.
- Any RCC member (beam, column & slab) must not be damaged during your interior work.
- Low-voltage cables such as telephone, TV and Internet cables shall be strictly laid as per consultant's service drawings with prior consent of developer / builder office.
- No wire / cables / conduits shall be laid or installed such that they from hanging formation on the building exterior face.
- Common passage / landscaped area not allowed to be used for personal purpose.
- This brochure is intended only for easy display & information of the scheme and does not form part of legal documents.

LEGAL DISCLAIMER

- * All furniture / objects shown in the plan are for presentation & understanding purpose only. By no means, It will form a part of final deliverable product.
- # All the elements, objects, treatments, materials, equipment & color scheme shown are artisan's impression and purely for presentation purpose. By no means, it will form a part of the amenities, features or specification of our final products.