

## KEY PLAN



## PRABHUVAN-5 4BHK Luxurious Living

LAVISH  
**LIFE**  
IS NOT SO FAR FROM YOU !

Site Address :

### PRABHUVAN-5

Opp. Sanjivani Hospital Road,  
Behind Himalya Calista Apartment,  
2-Jain Nagar, Sharda Mandir Road,  
Paldi, Ahmedabad-380007.

Developers :

**Aasthaa Association**

Architect :

**Pandya Association**

Structure Engineer :

**Vaidya Association**

Booking Contact

+91 63 5656 2400

+91 63 5656 2500



**PRABHUVAN-5**  
4BHK Luxurious Living

ELEGANCE MEETS  
*equisiteness*



▲  
**5 Storeys**  
Residential tower

▲  
**10 Units**  
Only

▲  
**2-Hall**  
**2-Suite Room** with Dressing

▲  
**10 Mtr.**  
Near with Derasar

▲  
**Located Amidst**  
Serene Surroundings Place



PRABHUVAN 5



HOMES WITH A  
PROMISE OF HAPPINESS



## PERFECT BLEND OF PLANNING AND CREATIVITY

Discover the best-in-class lifestyle,  
luxury in affordable price where  
you feel a sophisticated  
living experience.





LIVE IN TO RECREATE  
REJUVENATE REPOSE

Drive in to destiny of your soul.



*Cooldest Offer*

**4 A.C. In Each Flats  
with Separate  
SOLAR PANEL**



Visual Images for brochure understanding purpose only.

# Open air Theater on Terrace

Enjoy ! together...



Visual Images for brochure understanding purpose only.

GROUND FLOOR PLAN





TYPICAL FLOOR PLAN



# AMENITIES



Attractive Foyer



Security Cabin



CCTV Camera



EV Charging



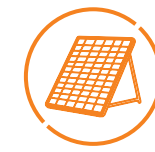
Fire Safety



24x7 Water Supply



Card Access Elevator



Solar panel For Personal use



Solar panel For Common Use



Open Air Theater



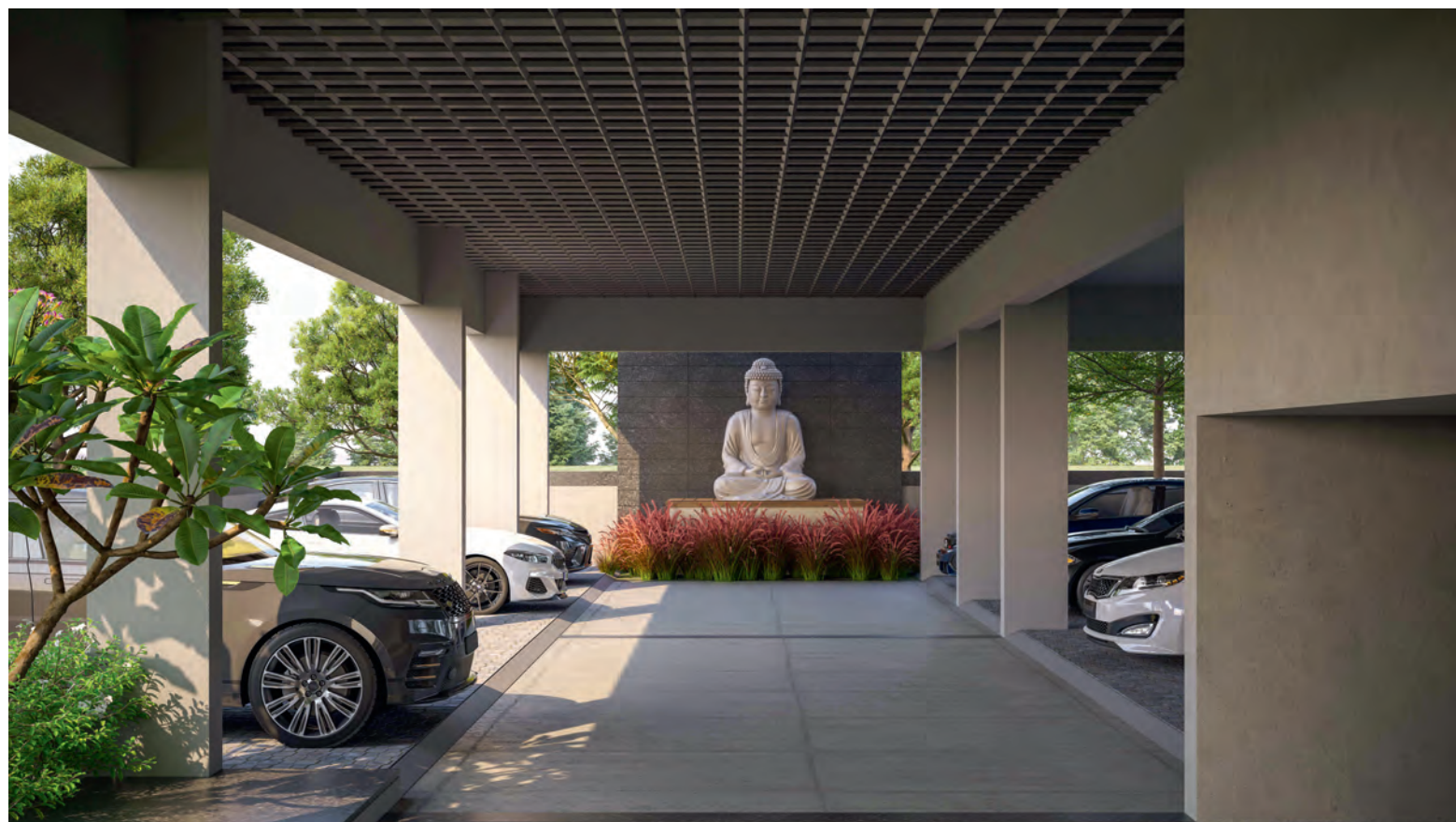
Car Parking



4 - Split A.C.



Quality Construction





**PRABHUVAN-5**  
4BHK Luxurious Living

THE HOME  
YOU HAVE  
ALWAYS  
DREAMT OFF.

This is what you've always dreaming about, the space to build your life, to create a world of your own and happily spend the rest of your life.

Dream of an inclusive lifestyle, an exclusive world of your own, where there is everything that you and your family have been dreaming about.



## SPECIFICATION



### STRUCTURE :

- R.C.C. frame structure.



### FLOORING :

- Vitrified tile flooring premium quality.



### KITCHEN :

- Granite platform with SS sink.
- Decorative tile dado upto lintel level.
- Storeroom with predesign polished kotastone.



### WASH AREA :

- Heavy duty tiles flooring with dedo of glazed tiles.
- Electrical point provision for washing machine.



### BATHROOMS :

- Wall cladding with designer series tiles, branded sanitary wares.



### DOORS :

- Main door With nature veneer finish & Video Calling
- Internal flush doors with two side laminates.
- Standard quality hardware.



### WINDOWS :

- Fully glazed aluminum anodized section sliding windows with Glass & Stone Jamb.



### ELECTRICAL :

- 3 Phase concealed ISI quality copper wiring with Premium modular switches
- MCB and ELCB tripper distribution board.



### PAINTS :

- Outside Paints with Texture
- Internal walls finished with wall putty
- Weather shield acrylic emulsion paint exteriors.



### PLUMBING :

- CPVC/UPVC hot and cold water supply pipes.



### TERRACE :

- Brick-bat concrete with china mosaic for heat reflection and thermal insulation.

### NOTES :

• All rights are reserved to Developer for any changes in plans & specifications. • At the time of cancellation of bookings 10% service charge of the total amount paid shall be levied & balance payment made only after the site booking. • All Possible Loan Paper Shall be Made available For Planning Loan. • AEC/AMC, Legal, Stamp duty, GST, Labourance, Gas connection & Maintenance deposit charges will be levied extra. • Any additional facilities due to changes in the by laws shall be borne by member. • Change in external elevation shall not be permitted. Internal changes shall be done only with prior permission and shall be charged extra in advance. • Details & dimensions in south are indicative & for the tentative representation only which should not be treated as legal documents. • Possession of the Apartment shall be given only after full payment. • Subject to Ahmedabad jurisdiction.