

BEST  
LUXURIOUS  
APPARTEMENT

Luxuries Flats  
**2 Bhk**



*Prime Location*

**UNITED TOWER**

ENGINEER / STRUCTURE ENGINEER

**ISHALEE ASSOCIATES**  
Mahesh M Kikani / Hitesh R Kamani

Project by  
**DEV DEVELOPERS**

Site Address:

UNITED TOWER : 600/3 - 600/5 Maheswari Society Ni Pachhal Sankalp Avane Ni Bajuma,  
Vadant Vihar Road Naroda

→ For Booking ←

**+91 8200699543, +91 8849887823, +91 8154019119, +91 9510276127**

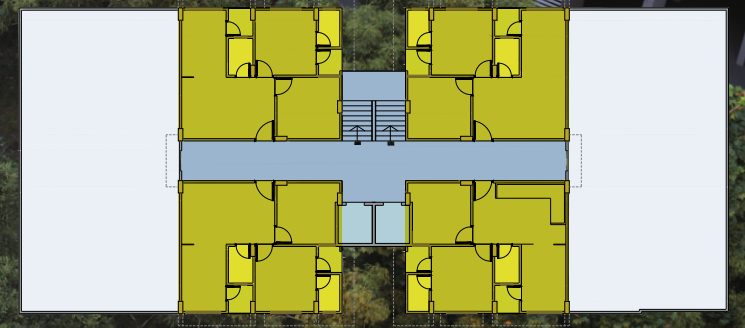
**UNITED TOWER**

UNITED  
TOWER

Presenting All New Habitat Of  
*Luxury*  
with superlunary high rise apartment



**2 BHK**  
UNIT FLOOR PLAN  
UNIT NO : 701 , 704 , 705 , 708

















1ST TO 6TH FLOOR PLAN



7TH FLOOR PLAN



- |   |   |
|---|---|
|    |    |
| STRUCTURE   | FLOORING  |
|    |    |
| WALL  | DOORS & WINDOWS   |
|    |    |
| ELECTRIFICATION   | PLUBING   |
|  |  |
| TOILET  | ELEGANT ENTRANCE GATE   |
|  |  |
| ELEVATOR  | 24 X 7 SECURITY   |
|  |  |
| CCTV Camera   | FIRE SAFETY   |

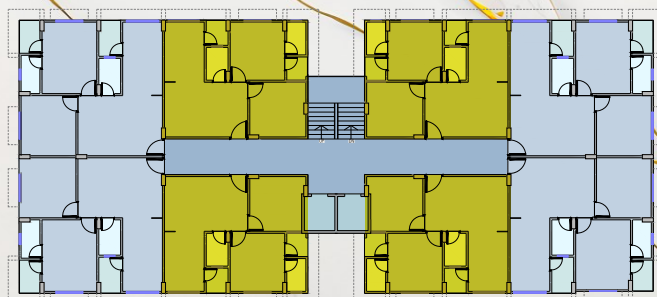
RERA REG. NO. :

WEB SITE : [www.gujrera.gujarat.gov.in](http://www.gujrera.gujarat.gov.in)

• Good environment is the Main Feature of the Society. • This Brochure is just for an easy presentation of the project and should not be treated as a legal document. • The entire dimension given is approximate & unfinished. • Irregular payment cause for cancellation of the booking, refund would be given only after the said apartment has been resold (payment received from new purchaser & that to after deducting the cancellation charge.) • The details, facts specification & figures mentioned are compliance for information purpose only and are subject to modification/copliance required as Rera act. • Applicable stamp duty, registration charges, legal expenses, GST at applicable rate or any taxes levied by the government authority are to be borne by members. • Subject to Ahmedabad Jurisdiction. • Total payment by Cheque / DD or NEFT or RTGS in favour of " DEV DEVELOPERS"

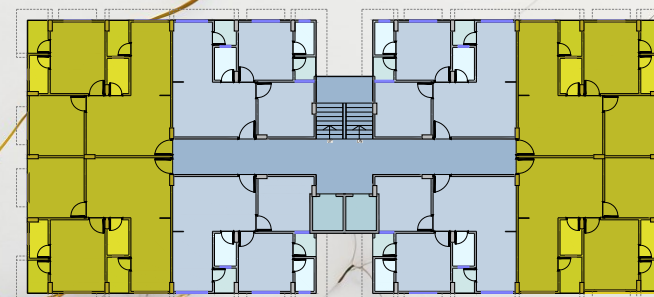
Presenting All New Habitat Of  
*Luxury*  
with superlunary high rise apartment

UNITED  
TOWER



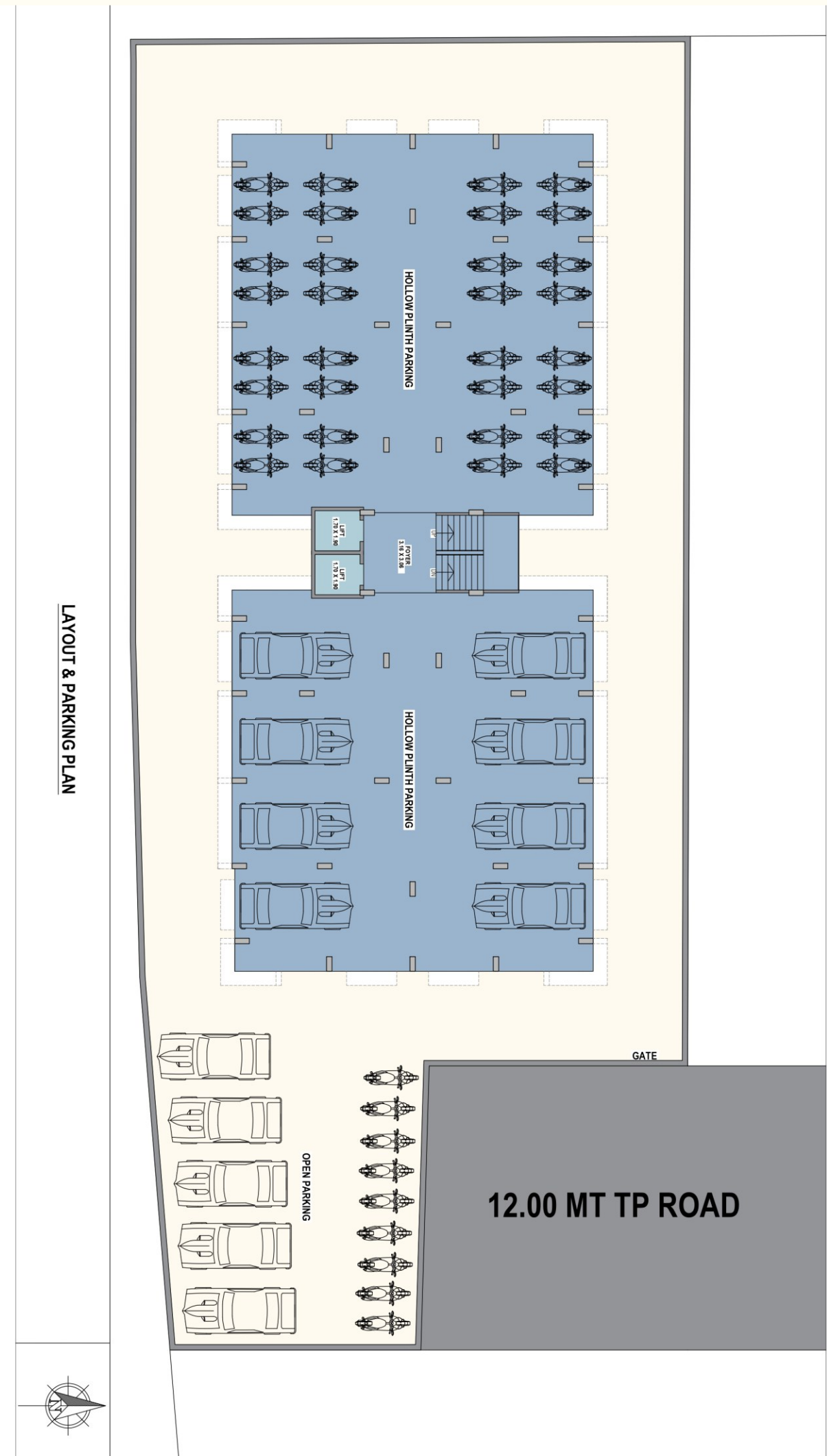
**2 BHK**  
UNIT FLOOR PLAN

UNIT NO:  
101 TO 601    105 TO 605  
104 TO 604    108 TO 608



**2 BHK**  
UNIT FLOOR PLAN

UNIT NO:  
102 TO 602    106 TO 606  
103 TO 603    107 TO 607



LAYOUT & PARKING PLAN

## PROJECT SPECIFICATION

### Flooring

- Living/Dining – Vitrified Tiles
- Bedroom - Vitrified Tiles
- Balcony - Vitrified Tiles

### Kitchen

- Vitrified Tiles Floor
- Granite Platform with SS Sink
- Ceramic Tiles Dado above platform
- Ceramic Tiles in wash yard.

### Doors & Windows

- Main Door – Flush door with both side laminate
- Bath & Toilets – PVC door

### Toilets

- Glazed Ceramic tiles dado upto lintel level
- Premium Quality Plumbing Fittings & Sanitary Ware

### Electrification

- Concealed copper wiring of ISI Brand
- Provision for split AC in one bedroom
- Protective ELCB for each apartment

### Wall Finish & Color Works

- Internal Wall – Putty Finish over mala plaster
- External Wall – Acrylic Paint over sand faced plaster/texture

### Common Amenities

- Entrance Gate
- Elevation Lights

### PROJECT FEATURES:

- Earthquake Resistant Structures
- Automatic Elevators in wing
- Internal Roads of RCC
- Well Planned Parking Area
- Good Quality Exterior Texture & Color
- Fire Safety

# *Luxury*

Presenting All New Habitat Of

with superlunary high rise apartment

