



www.atharvaskyz.com



Atharva Skyz
Nr. Ganesh Parisar, Opp. Godrej
Garden City, Jagatpur-Chenpur
Road, Jagatpur, Ahmedabad.



Developers
Atharva Infrastructure
+91 93288 75130
+91 98250 81200



Design & Structure
Bipin S. Agarwal
+91 98250 83323



Sales
+91 98250 81200
+91 90997 84107
atharvainfrastructure@gmail.com



Skiyz
3 BHK ELITE LIVING

Notes • Internal changes and alterations are not allowed • Changes in external elevation shall not be permitted • The developer/promoter reserves rights to make any change in plan, elevation, amenities and other details which shall be binding to all members • AMC, GEB and legal expenses including stamp duty, registration charges, GST etc as applicable to be borne by members in advance • Maintenance deposit shall be taken in advance. Any additional liabilities due to change in by laws or stamp duty or any government laws shall be borne by members • Furniture and fixtures shown are only for indication of arrangement not to be provided • All dimensions in the plan are appropriate, average and unfinished and subject to variation • The starting or timely possession of the project depends on the permission of the authorities, natural climates or certain unavoidable circumstances • This brochure is for easy presentation of the project and it should not be considered as a part of the legal documents • For further information regarding the project the member/customer is requested to check the details on RERA website or at the developers office before going ahead with the booking • Interest will be charged on late installments • Irregular payment can cause cancellation of booking • The north direction shown in the brochure is approx. and can be erroneous the member/customer is requested to verify it personally • The key plan in the brochure is not to scale and does not depict the exact location of the project or the connecting road network or the other abutting structures or landmarks. It is only for representation purpose and gives a rough idea about the approximate location of the project. The member/customer is requested to visit the project site and check the physical location of the project and its surrounding before going ahead of the booking. • All terms and conditions are subject to Ahmedabad jurisdiction.



Dreams can be fragile. Dreams can be fleeting and Dreams are may be unreal. But if your dreams are beautiful, and if you have a steadfast belief in the beauty of your dreams: a beautiful reality is not far away.

Presenting "Atharva Skyz". A refined manifestation of your delightful dreams, this stunning work of art that fulfills your aspirations which you thought were ever so elusive.

you are invited to reach for the stars on the wings of your dreams.

GROUND
+ 13 STOREY

3 BHK
HIGHER LIVING

FACILITY FOR
BASEMENT

A THING OF *Beauty*
IS JOY *Forever*

॥ अथर्व ॥ *Skys*
3 BHK ELITE LIVING





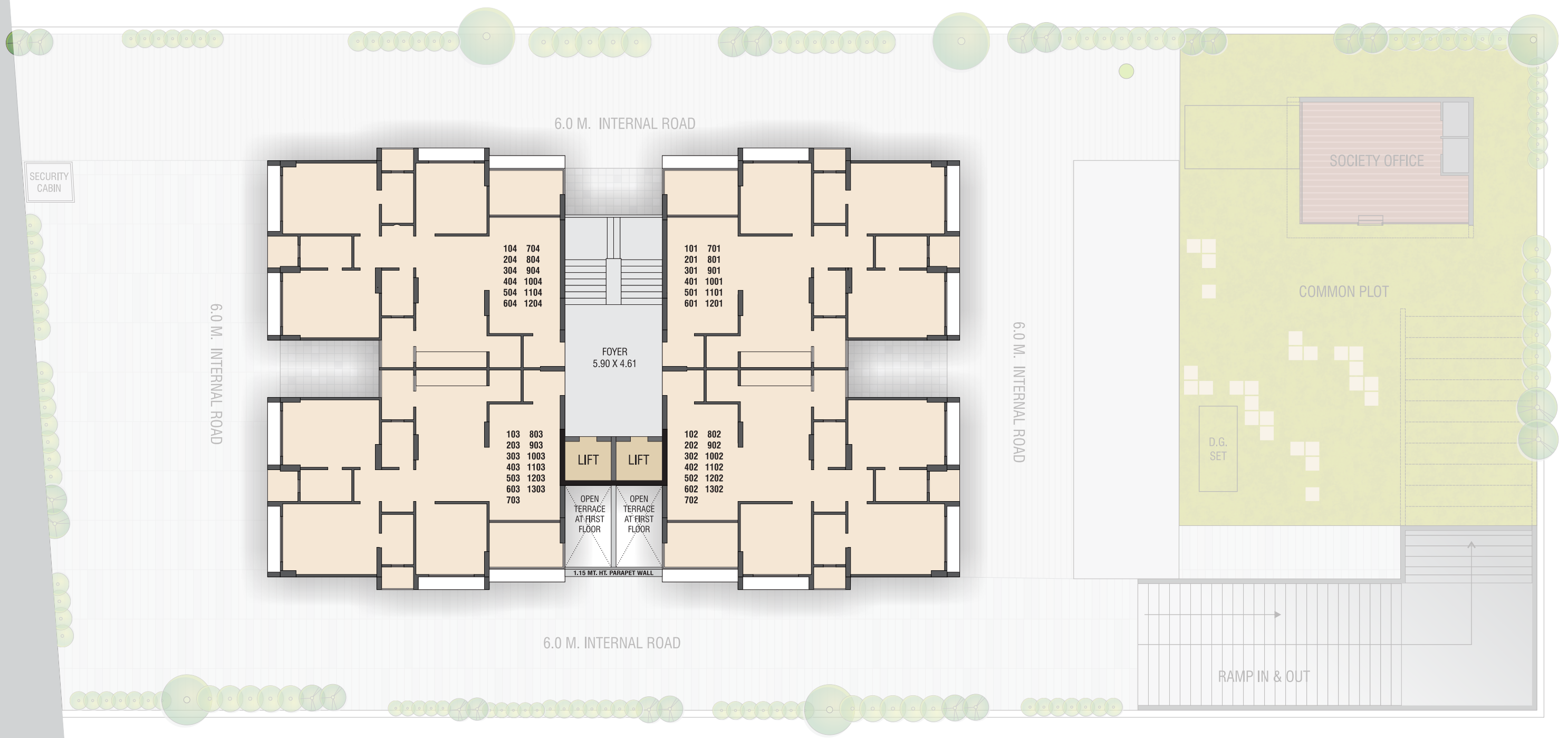
GROUND FLOOR PLAN

24.0 M. WIDE T.P. ROAD



TYPICAL FLOOR PLAN

24.0 M. WIDE T.P. ROAD



Connectivity
TO THE CORE

अथर्व
Skys
3 BHK ELITE LIVING

Artist's Imagination



UNIT PLAN



All dimensions are in Meter.



Artist's Imagination

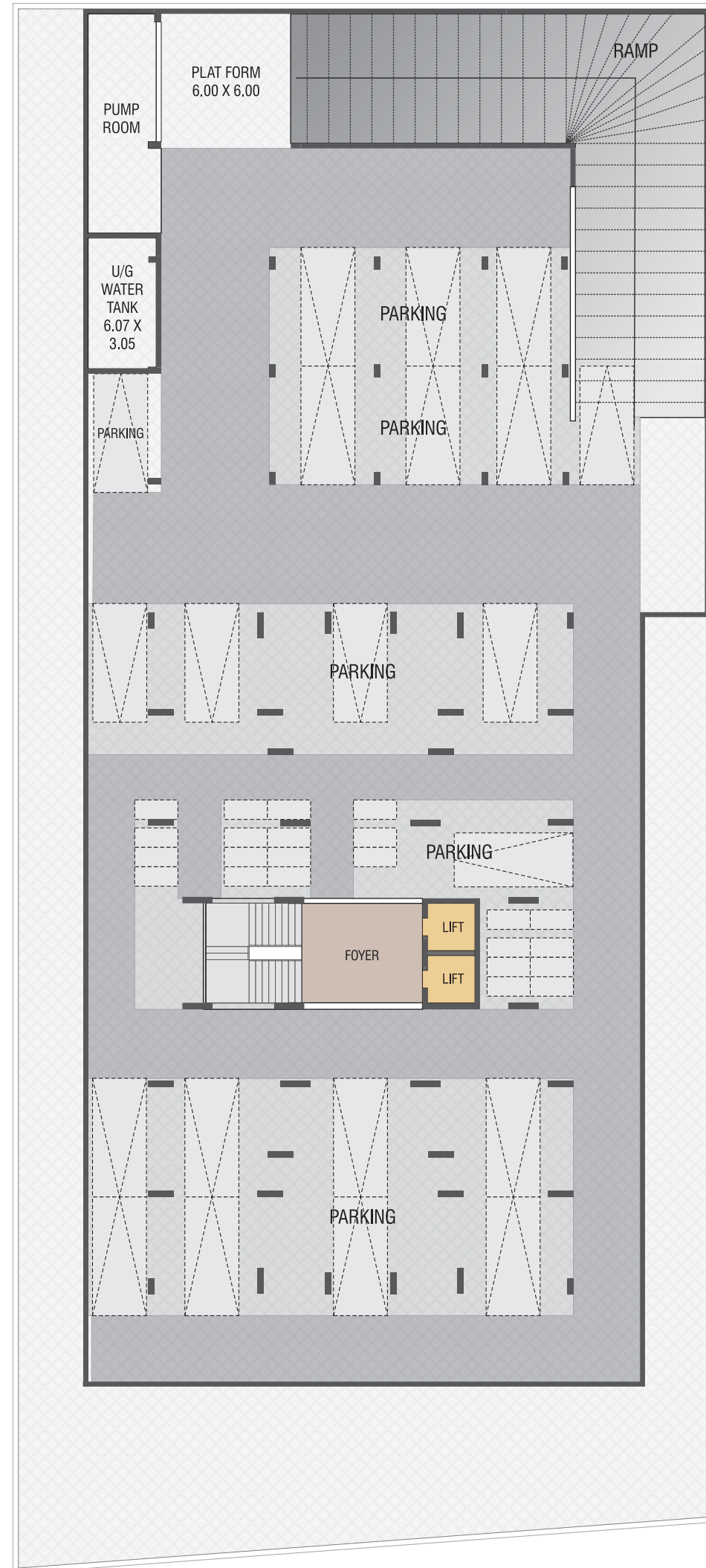


Artist's Imagination



All dimensions are in Meter.

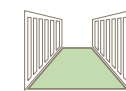
BASEMENT FLOOR



GREENERY ELEVATED TO *infinity*



AMENITIES



ENTRANCE
FOYER



CLUB HOUSE /
SOCIETY OFFICE



GENERATOR FOR
POWER BACKUP



24X7 WATER
SUPPLY



COMMON
DISH TV



CHILDREN
PLAY AREA



BOOM BARRIER



AUTOMATIC
LIFTS



SPACE FOR
PARKING



GAS LINE
FACILITY



SECURITY
CABIN



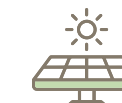
CCTV CAMERA



LANDSCAPE
GARDEN



FIRE SAFETY



SOLAR POWER



SENIOR CITIZEN
SEATINGS



Convenience UP CLOSE

॥ अथर्व ॥ Skiya
3 BHK ELITE LIVING



STAY CLOSE TO
Daily NEEDS



EDUCATION

Global International School
Apollo International School
Nirma University
SGVP International School
Hirmani School



HOSPITALS

KD Hospital
SGVP Holistic Hospital
Sola Civil Hospital



TRANSPORTATION

Metro Rail Project
BRTS Bus Route
Sabarmati Train Station



SPECIFICATION



KITCHEN & WASH YARD

- Fine quality granite platform with branded S.S. Sink
- Designer glaze tiles dado up to lintel level
- Fine Polish stone shelves in store
- Water supply point for Aqua guard and washing machine



WALL FINISH

- External wall with texture finish and 100% acrylic waterproof paint
- Internal wall with smooth mala plaster with Birla putty



FLOORING

- Premium quality full body vitrified tiles



TOILET

- Designer Glaze tiles dado up to lintel level
- Premium quality branded CP fittings
- Premium quality sanitary ware
- Electric geyser point in each bathroom



WINDOWS

- Powder coated sliding aluminum windows with granite stone frame



DOORS

- Decorative main door with Teak frame
- Flush doors with teak wood frames for bedrooms, toilets and wash with mortice lock fittings



ELECTRICAL

- Three phase electric supply
- Concealed copper wiring of good quality
- Mini modular switches with adequate points
- A.C. point in all bedrooms and living room
- T.V. and Telephone/Internet point in living room and in master bedroom