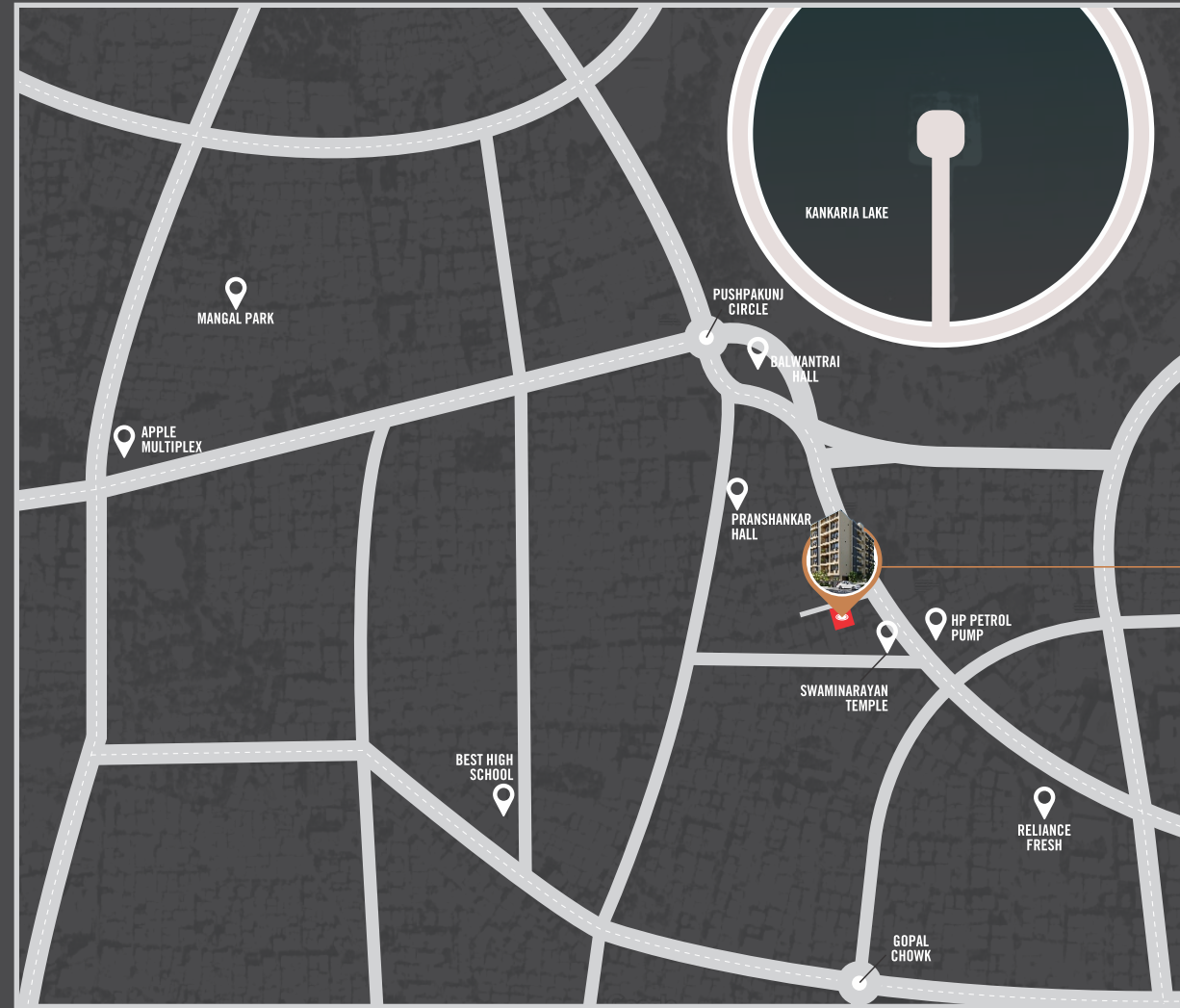


## LOCATION MAP



# CORUS DREAM

SITE ADDRESS :  
CORUS DREAM, 13, Swaminarayan Colony, Rambagh,  
Maninagar, Ahmedabad.

CONTACT : +91 97277 78818

PROJECT BY



ARCHITECT



RERA NO. : PR/GJ/AHMEDABAD/AHMEDABAD CITY/Ahmedabad Municipal Corporation/RN371AA10271/091123 | [www.gujrera.gujarat.gov.in](http://www.gujrera.gujarat.gov.in)

Developers reserve the rights for alteration of specification and design. I all dimensions / area are approximate, average & subject to variations. Irregular payments shall cause cancellation of booking. SMC property tax, GST, electricity, legal expenses, vat, service tax & other GOVT charges, stamp duty & registration, maintenance charges, maintenance deposit & membership fees shall be borne by the members, this brochure is not to be treated as part of the legal document, it is for the easy presentation of the project. I all this images are for artistic purposes only.

Disclaimer : the details, facts, specifications, figures mentioned in brochure are indicative for information purpose only and are subject to modifications/compliance required as per RERA act.

3D & Brochure Design by  ELAN  
Design

# CORUS DREAM

• 3 & 4 BHK ABODES •



3 & 4

BHK ABODES



A PERFECT ABODE FOR THOSE WHO

**WISH FOR PERFECTION**



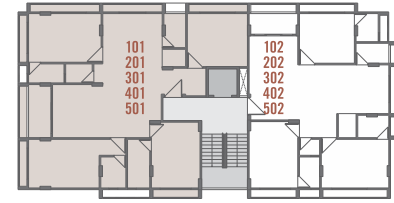
# GROUND FLOOR PLAN



# TYPICAL FLOOR PLAN



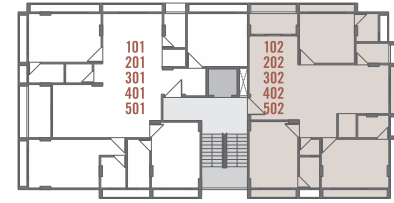
# 4 BHK UNIT PLAN



# 4 BHK SECTION PLAN



3 BHK UNIT PLAN



3 BHK SECTION PLAN





---

THE HOME THAT BREATHES  
**LIFE IN YOURS**

Feel the breeze and the goodness of nature for an inimitable living experience





## AMENITIES



ENTRANCE GATE



CCTV CAMERA



FIRE SAFETY



24 X 7 SECURITY



SUFFICIENT  
PARKING



24 HRS WATER  
SUPPLY



HIGH SPEED  
ELEVATORS

Corus Dream houses enough spaces that rejuvenate and revitalize every resident's life to the tee, for kids and adults alike!

**CORUS  
DREAM**



## SPECIFICATIONS



**STRUCTURE :**  
RCC Frame Structure, Out side double coat plaster with Texture, Inside mala Finish plaster.



**FLOORING :**  
Double charge vitrified tiles.



**KITCHEN :**  
Standard quality polished granite or Stone in Platform, S.S. sink of Standard quality.



**TOILET / BATHROOMS :**  
Designer tiles in all toilet up to lintel level.  
Standard quality of sanitary-ware & C.P Fittings.



**DOORS :**  
Decorative Door for main entrance with both side laminated  
And other doors are flush door with oil paint colour.



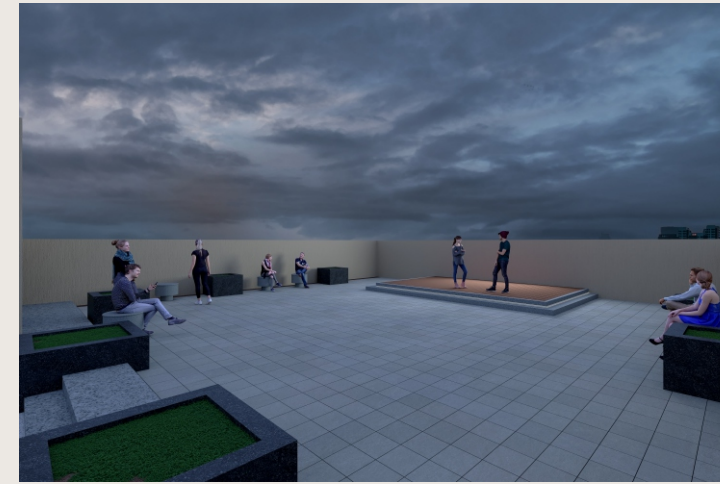
**WINDOWS :**  
Aluminum section windows.



**ELECTRIFICATION :**  
Concealed copper wiring and Standard company ISI switches.



**PAINTS :**  
All exterior walls with acrylic paint.  
And all interior walls will be white putty.



**CORUS  
DREAM**