



शोपिंग करो शोभती

designed & printed by :  
KALAVID : 98242 21002

The logo for EXXONITIC A BUSINESS ARENA features the word 'EXXONITIC' in a large, bold, serif font. The 'I' and 'T' in 'EXXONITIC' are stylized to resemble classical columns. Below 'EXXONITIC', the words 'A BUSINESS ARENA' are written in a smaller, uppercase, sans-serif font.

EXXONITIC  
A BUSINESS ARENA



# IDYLLIC

*Theme*

# EXXON<sup>⌚</sup>⌚C

Exxon<sup>⌚</sup>⌚C is the ultimate destination for companies and brands to grow and expand their business. The perfect location gives you the opportunity to create your success, your way. The sky is the limit and Exxon<sup>⌚</sup>⌚C is where you begin.



Welcome to  
**Exxoniiic**

We make business more comfortable and convenient.  
Get access to all the services and facilities you need  
in a location with state of the art infrastructure.

હવે અરમાનો થશે પુરા  
સ્વપ્નરૂપી નગરી બનશે જહાંગીરપુરા...

EXXON<sup>II</sup>C



## Ease of Business

Commerce made convenient, so you can do your business the way you like while achieving all your goals successfully.



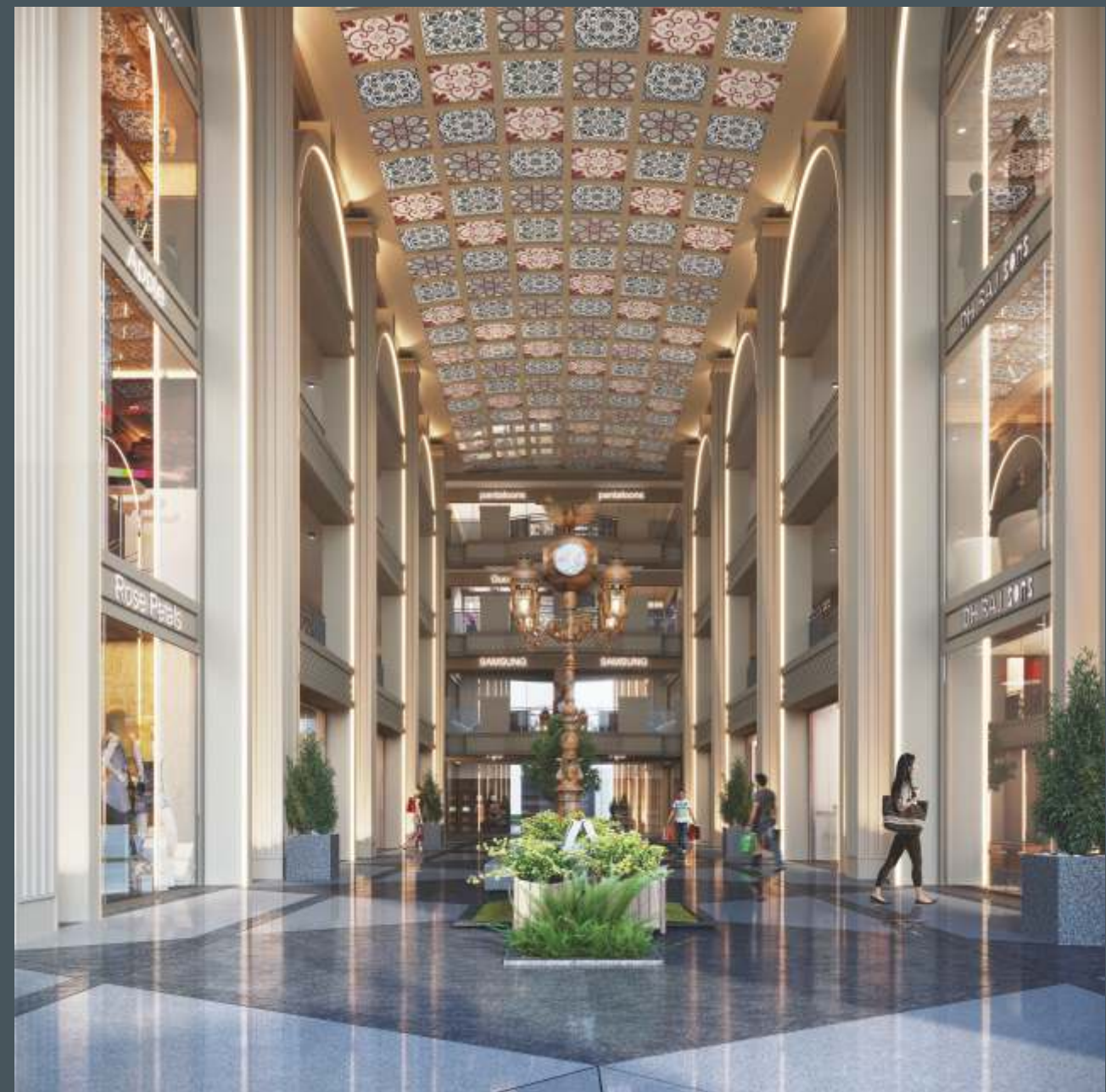
ખુશીઓના છે સમાચાર  
સુરતમાં બન્યું એક નવું બજાર..



Elegance and  
Sophistication,  
Inside Out



અહીંની એકવખતની મુલાકાત,  
બની રહેશે ખાસ વાત.




EXXONIIC



સુરત માટે એક અદ્ભુત ઉત્તમ ખરીદી નું સ્થળ...  
એક્ઝોનિક મોલ

Inspire to  
Achieve

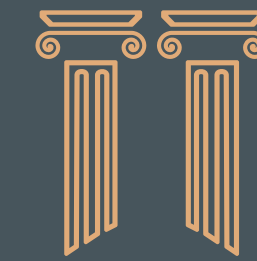
The perfect location attracts the right clientele, so at ExxoniiC Mall,  
your business will continue to flourish.

  
Mahavir  
Sanskar Dham

  
Prayasha  
Party Plot

  
Ashish  
Raw House





## Exquisite location, Exquisite facilities

The perfect location in Surat is now home to the Exxonnic Mall. Step inside and see a world filled with endless possibilities.







## Perfect location, Exquisite interiors

Your business deserves the best, and Exxoniiic Mall offers the best Architecture, a strong foundation and a fantastic design.



તમને બોલાવવાને અમે બન્યા છીએ અધીરા...  
બસ એક વાર તો આવોને જહાંગીરપુરા...

GROUND FLOOR



15-MT. Wide Road

RAMP ON TO UPPER BASEMENT

1<sup>ST</sup> FLOOR PLAN



<b>101</b> 43'1½" X 27'7½" CA=1195 sq.ft.	<b>102</b> 10'0" X 19'9" CA=198 sq.ft.	<b>103</b> 10'0" X 19'9" CA=198 sq.ft.	<b>104</b> 10'0" X 19'9" CA=198 sq.ft.	<b>105</b> 10'0" X 19'9" CA=198 sq.ft.	<b>106</b> 10'0" X 19'9" CA=198 sq.ft.	<b>107</b> 10'0" X 19'9" CA=198 sq.ft.	<b>108</b> 10'0" X 19'9" CA=198 sq.ft.	TOILET LIFT	TOILET LIFT	<b>109</b> 12'7½" X 18'10½" CA=239 sq.ft.	<b>110</b> 10'0" X 18'10½" CA=189 sq.ft.	<b>111</b> 10'0" X 18'10½" CA=189 sq.ft.	<b>112</b> 10'0" X 18'10½" CA=189 sq.ft.	<b>113</b> 10'0" X 18'10½" CA=189 sq.ft.	<b>114</b> 10'0" X 18'10½" CA=189 sq.ft.	<b>115</b> 10'0" X 18'10½" CA=189 sq.ft.	<b>116</b> 12'7½" X 18'10½" CA=239 sq.ft.	
	8'1½" WIDE PASSAGE								8'1½" WIDE PASSAGE									
<b>150</b> 44'1½" X 27'7½" CA= 1220 sq.ft.	8'1½" WIDE PASSAGE							8'1½" WIDE PASSAGE	<b>124</b> 23'½" X 13'10½" CA=321 sq.ft.	<b>123</b> 23'1½" X 13'10½" CA=139 sq.ft.	<b>122</b> 10'0" X 13'10½" CA=139 sq.ft.	<b>121</b> 10'0" X 13'10½" CA=139 sq.ft.	<b>120</b> 10'0" X 13'10½" CA=139 sq.ft.	<b>119</b> 10'0" X 13'10½" CA=139 sq.ft.	<b>118</b> 10'0" X 13'10½" CA=139 sq.ft.	8'1½" WIDE PASSAGE	<b>117</b> 14'10½" X 11'10½" CA=176 sq.ft.	
	8'1½" WIDE PASSAGE								<b>125</b> 23'1½" X 13'10½" CA=321 sq.ft.	<b>126</b> 10'0" X 13'10½" CA=139 sq.ft.	<b>127</b> 10'0" X 13'10½" CA=139 sq.ft.	<b>128</b> 10'0" X 13'10½" CA=139 sq.ft.	<b>129</b> 10'0" X 13'10½" CA=139 sq.ft.	<b>130</b> 10'0" X 13'10½" CA=139 sq.ft.	<b>131</b> 10'0" X 13'10½" CA=139 sq.ft.		<b>132</b> 14'10½" X 10'0" CA=149 sq.ft.	
<b>151</b> 44'1½" X 29'0" CA= 1265 sq.ft.	8'1½" WIDE PASSAGE							8'1½" WIDE PASSAGE	<b>142</b> 12'10½" X 12'1½" CA= 154 sq.ft.	<b>141</b> 10'0" X 19'9" CA=198 sq.ft.	<b>140</b> 10'0" X 19'9" CA=198 sq.ft.	<b>139</b> 10'0" X 19'9" CA=198 sq.ft.	<b>138</b> 10'0" X 19'9" CA=198 sq.ft.	<b>137</b> 10'0" X 19'9" CA=198 sq.ft.	<b>136</b> 10'0" X 19'9" CA=198 sq.ft.	<b>135</b> 10'0" X 19'9" CA=198 sq.ft.	8'1½" WIDE PASSAGE	TOILET
	8'1½" WIDE PASSAGE								LIFT	<b>159</b> 10'0" X 21'1½" CA=211 sq.ft.	<b>160</b> 10'0" X 21'1½" CA=211 sq.ft.	<b>161</b> 10'0" X 21'1½" CA=211 sq.ft.	<b>162</b> 10'0" X 21'1½" CA=211 sq.ft.	<b>163</b> 10'0" X 21'1½" CA=211 sq.ft.	<b>164</b> 10'0" X 21'1½" CA=211 sq.ft.	<b>165</b> 10'0" X 21'1½" CA=211 sq.ft.		LIFT

RAMP DN TO UPPER BASEMENT

2<sup>ND</sup> & 3<sup>RD</sup> FLOOR PLAN



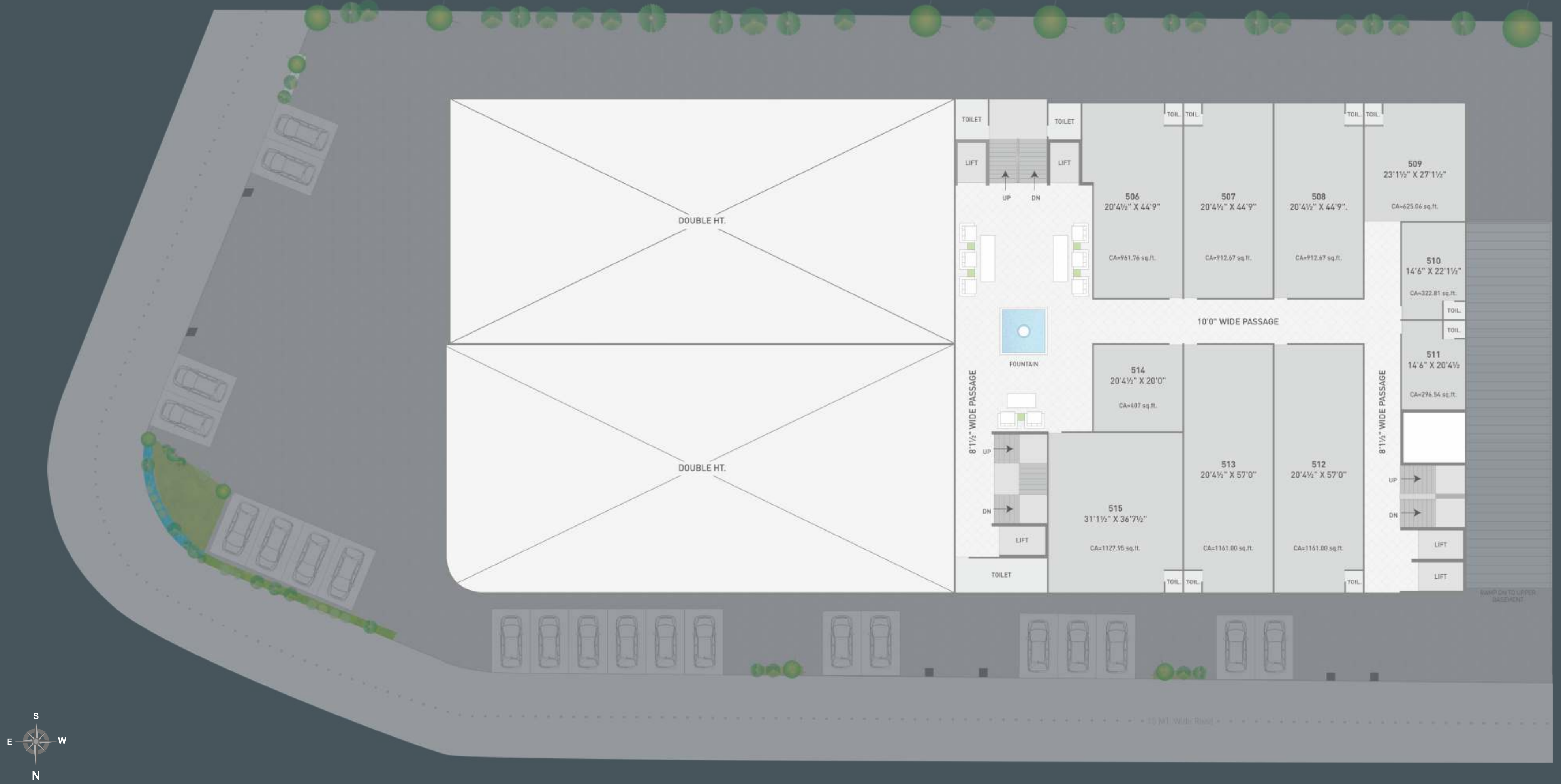
<b>201/301</b> 43'1½" X 27'7½" CA=1195 sq.ft.	<b>202/302</b> 10'0" X 19'9" CA=198 sq.ft.	<b>203/303</b> 10'0" X 19'9" CA=198 sq.ft.	<b>204/304</b> 10'0" X 19'9" CA=198 sq.ft.	<b>205/305</b> 10'0" X 19'9" CA=198sq.ft.	<b>206/306</b> 10'0" X 19'9" CA=198 sq.ft.	<b>207/307</b> 10'0" X 19'9" CA=198 sq.ft.	<b>208/308</b> 10'0" X 19'9" CA=198 sq.ft.	TOILET LIFT	TOILET LIFT	<b>209/309</b> 12'7½" X 18'10½" CA=239 sq.ft.	<b>210/310</b> 10'0" X 18'10½" CA=189 sq.ft.	<b>211/311</b> 10'0" X 18'10½" CA=189 sq.ft.	<b>212/312</b> 10'0" X 18'10½" CA=189 sq.ft.	<b>213/313</b> 10'0" X 18'10½" CA=189 sq.ft.	<b>214/314</b> 10'0" X 18'10½" CA=189 sq.ft.	<b>215/315</b> 10'0" X 18'10½" CA=189 sq.ft.	<b>216/316</b> 10'0" X 18'10½" CA=239 sq.ft.														
	8'1½" WIDE PASSAGE								8'1½" WIDE PASSAGE																						
8'1½" WIDE PASSAGE								<b>224/324</b> 23'1½" X 13'10½" CA=321 sq.ft.								<b>223/323</b> 10'0" X 13'10½" CA=139 sq.ft.		<b>222/322</b> 10'0" X 13'10½" CA=139 sq.ft.		<b>221/321</b> 10'0" X 13'10½" CA=139 sq.ft.		<b>220/320</b> 10'0" X 13'10½" CA=139 sq.ft.		<b>219/319</b> 10'0" X 13'10½" CA=139 sq.ft.		<b>218/318</b> 10'0" X 13'10½" CA=139 sq.ft.		8'1½" WIDE PASSAGE			
								8'1½" WIDE PASSAGE								<b>225/325</b> 23'1½" X 13'10½" CA=321 sq.ft.								<b>226/326</b> 10'0" X 13'10½" CA=139 sq.ft.		<b>227/327</b> 10'0" X 13'10½" CA=139 sq.ft.				<b>228/328</b> 10'0" X 13'10½" CA=139 sq.ft.	
8'1½" WIDE PASSAGE																<b>242/342</b> 12'10½" X 12'1½" CA=154 sq.ft.								<b>241/341</b> 10'0" X 19'9" CA=198 sq.ft.		<b>240/340</b> 10'0" X 19'9" CA=198 sq.ft.		<b>239/339</b> 10'0" X 19'9" CA=198 sq.ft.		<b>238/338</b> 10'0" X 19'9" CA=198 sq.ft.	
								8'1½" WIDE PASSAGE								LIFT								<b>259/359</b> 10'0" X 21'1½" CA=211 sq.ft.		<b>260/360</b> 10'0" X 21'1½" CA=211 sq.ft.		<b>261/361</b> 10'0" X 21'1½" CA=211 sq.ft.		<b>262/362</b> 10'0" X 21'1½" CA=211 sq.ft.	
8'1½" WIDE PASSAGE																<b>250/350</b> 44'1½" X 27'7½" CA= 1220 sq.ft.								TOILET		LIFT		LIFT		8'1½" WIDE PASSAGE	
								8'1½" WIDE PASSAGE								<b>251/351</b> 44'1½" X 29'0" CA= 1265 sq.ft.								TOILET		LIFT		LIFT			

RAMP DN TO UPPER BASEMENT

4<sup>TH</sup> FLOOR PLAN



5<sup>TH</sup> FLOOR PLAN



6<sup>TH</sup> FLOOR PLAN



RAMP DN TO UPPER BASEMENT

## SPECIFICATION

### HEIGHT

- Ground Floor : 11 ft Slab to Slab
- 1<sup>st</sup> To 3<sup>rd</sup> : 10 ft Slab to Slab
- 4<sup>th</sup> To 6<sup>th</sup> : 10 ft & 20 ft Slab to Slab

### UNIT FINISH

- Wall Finish : Birla White cement Putty application
- Flooring : Vitrified tiles flooring
- Shutter : Galvanized / MS Rolling shutter of ISI Brand
- Ceiling : RCC Expo finish with Birla Putty application

### COMMON AREA

- Lift Cladding : Ultra modern architectural design
- Staircase : Granite tread and riser
- Passage : Scratch proof tiles with Matte finish
- Railing : Decorative railing
- Double Basement Parking + Ample Parking Space on G.F

### BUILDING FINISH

- Plaster : Outside double coat Mala finish plaster
- Color : ICI Weathershield Max colour along with texture
- Terrace : Water proofing on terrace

### WATER SUPPLY

- 24x7 Uninterrupted water supply through Municipal Corporation as well as Boring System
- Overhead and Underground water tanks of sufficient capacity

### ELECTRIFICATION

- Concealed electrification of Apar / RR Kabel or equivalent brand and modular switches of ISI brand
- AC points in all units
- MCB in all units for safety
- Sufficient electric points in Showrooms, Shops and Offices
- 2 Generator power backup points in each unit
- Generator for power backup for Passage area, Lifts common area and Water supply

### COMMON TOILET

- Well ventilated and well designed common toilets
- Designer sanitary ware & CP fittings of ISI brand
- Sewage System: External PVC pipe of Astral or equivalent brand

### SPECIAL FEATURES

- River view from upper floors
- Fire safety equipments as per norms
- Earthquake resistant structure design
- Anti-Termite by specialized agency
- CCTV cameras in common area
- 2 Side road corner

અહીં જણાશે કંઈક વિશેષ,  
જેમને જોઈએ છે કંઈક વિશેષ...

#### DISCLAIMER

Stamp duty registration charges, GST, Legal charges, GEB charges & Society maintenance charges etc. Shall be purchaser. Any new taxes announced by the government / SMC / any authority shall be borne by the purchaser. Continuous default and irregular payments may lead to cancellation / penalty as per RERA act. This brochure is intended only for easy display and information of the scheme and does not form part of the legal document. Super built up subject to Surat jurisdiction.

Project by  
Samprati group

  
**SAMPRATI**  
GROUP

Developers  
Samprati Procon  
Email: samprati.procon@gmail

Architect  
AAYOJAN  
Ar. Hareh Mahadevwal

Structure

  
ER. JALIL A. SHEIKH

Contact us:

88664 99554  
98982 30396

Site Address:

F.P-63/A, T.P-46,  
Nr. Mahavir Sanskar Dham,  
Opp. Prayosha Party Plot,  
Ashram road, Jahangirpura, Surat.

Near by Connectivity

Airport -15 km  
BRTS-1.5 km  
Surat Railway Station-13 km

Ring Road Near by 1 km



DGVCL Circle