



Site Address :
Nr. Maheshwari Society, Geratpur Railway Station Road,
Geratpur, A'bad -382435

M.: 94260 52888 | 99788 31990 | 85113 47143



For Your *Peace* of Mind



3 & 4 BHK LUXURIOUS VILLA



THE
Premium

Collection of Premium villas
that comes with high end
facilities, offering a splendid
LUXURIES LIFESTYLE.



3 & 4 BHK LUXURIOUS VILLA























A
Place
that reflect your cherished
Dream

Some destination reflect your journey in life. The community of Kahan Villa at Geratpur can now be your journey towards your cherished dreams. Soaring beyond the city's skyline, rows of bespoke lifestyle designed villas sits serenely in one of the greenest patches in the city, right next to some elegant addresses.

BEST IN CLASS | BIGGEST IN SEGMENT





 SENIOR CITIZEN SIT-OUTS	 JOGGING TRACK	 YOGA HUT	 LANDSCAPED COMPOUND WALL	 BOOM BARRIER
 CCTV	 CHILDREN PLAY AREA	 PARTY LAWN	 STREET LIGHT	 24 HOUR WATER SUPPLY
 BENCHES FOR SITTING	 TREE PLANTATIONS	 SECURITY 24x7	 CHILDREN DROP-OFF ZONE	 INDOOR GAMES
 CLUB HOUSE	 ATTRACTIVE ELEVATION	 OPEN SPACE		



AMENITIES





Let's experience
Green Environment

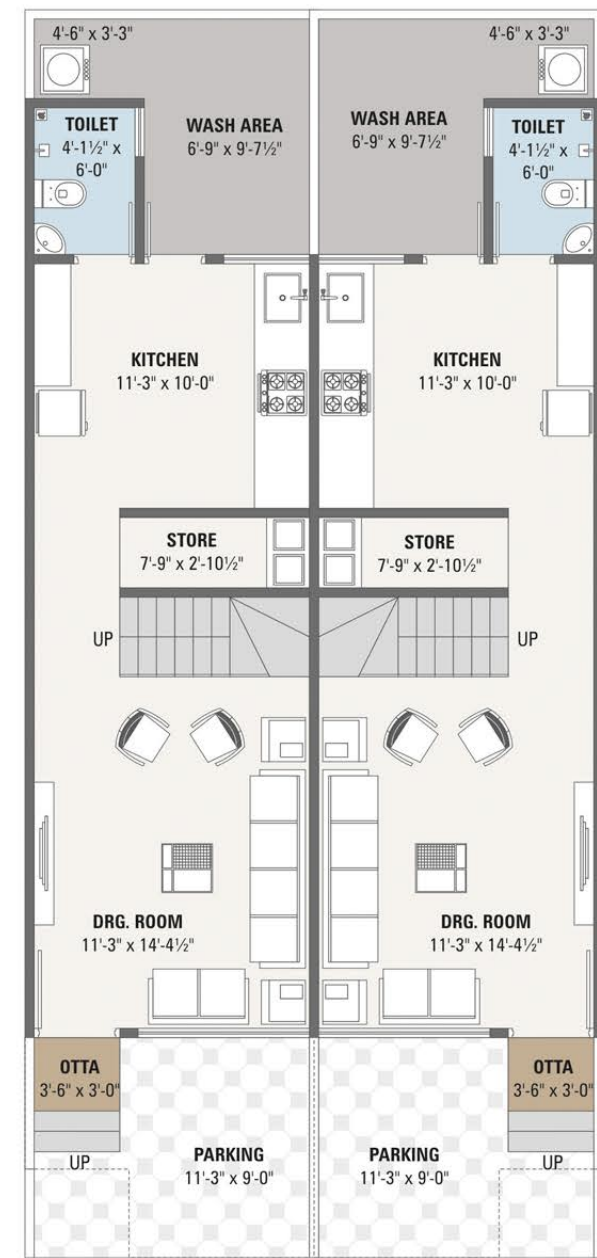
Natural sunlight, open and green spaces with trees and flowering plants and the tree flow of breeze makes living in Kahan Villa heavenly experience.



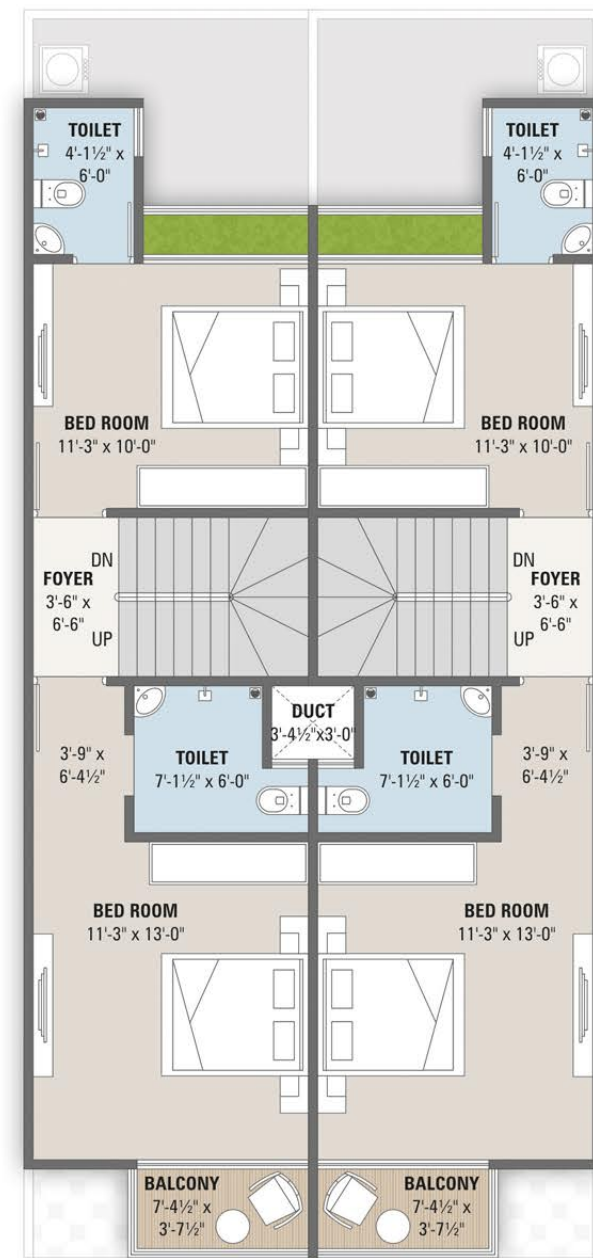
3 & 4 BHK LUXURIOUS VILLA



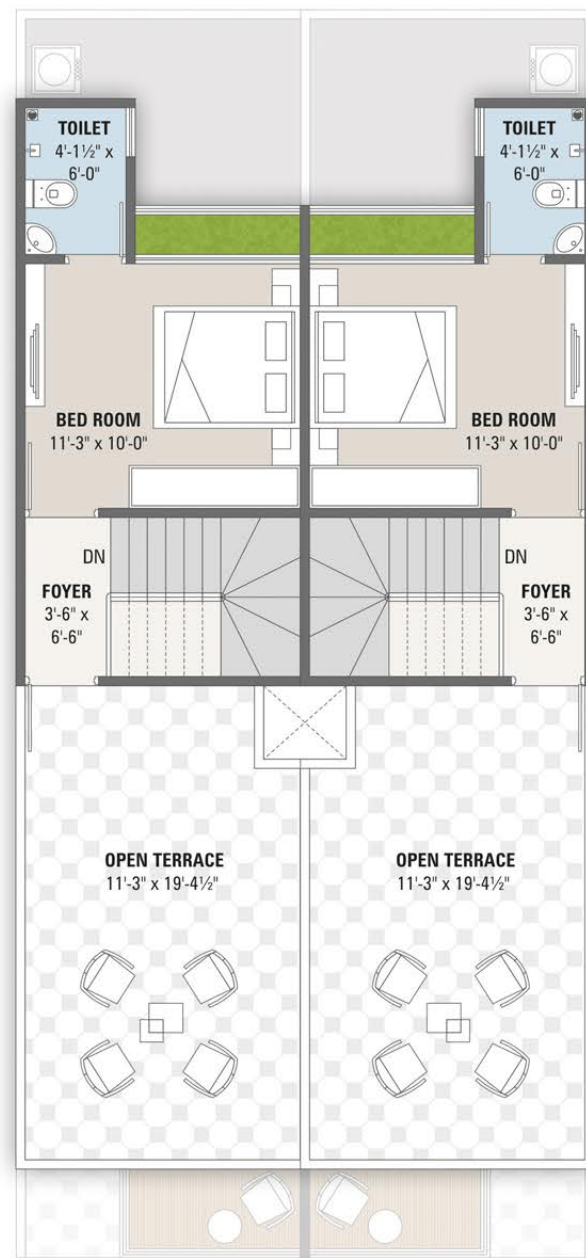
3 BHK UNIT PLAN
 { 1 TO 6 & 9 TO 11 } TYPE - A



GROUND FLOOR PLAN

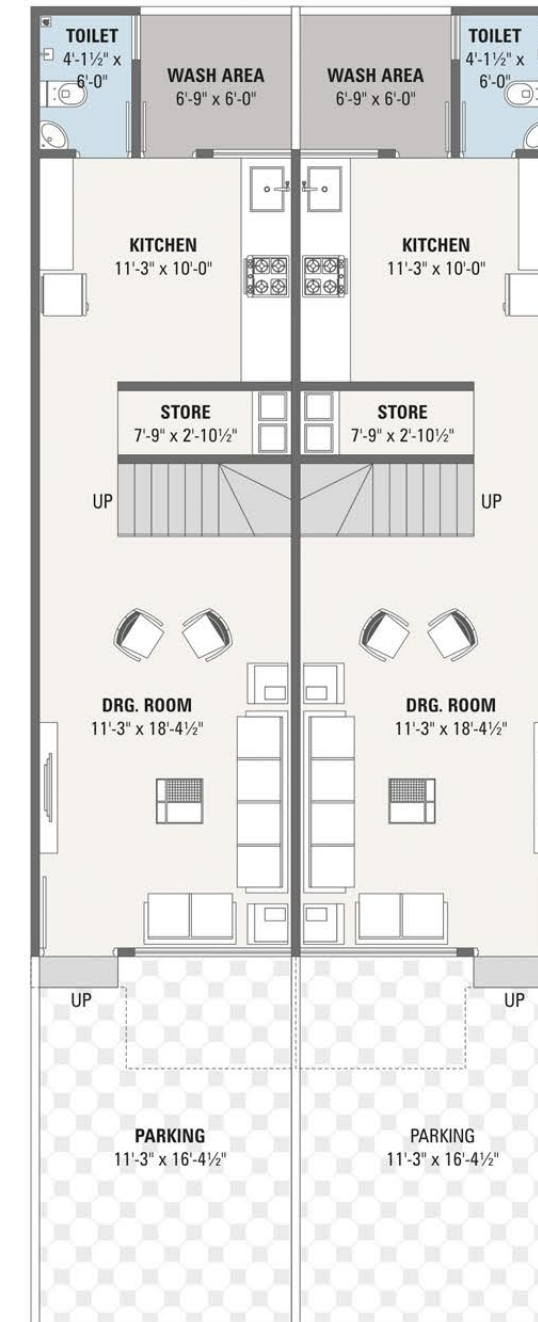


1ST FLOOR PLAN

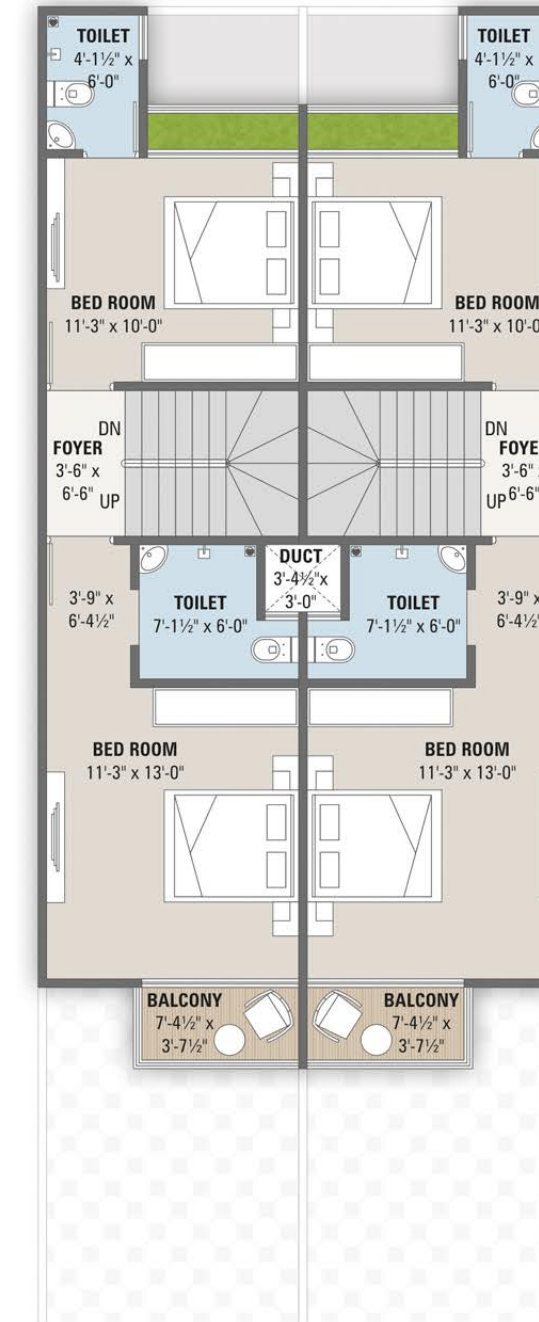


2ND FLOOR PLAN

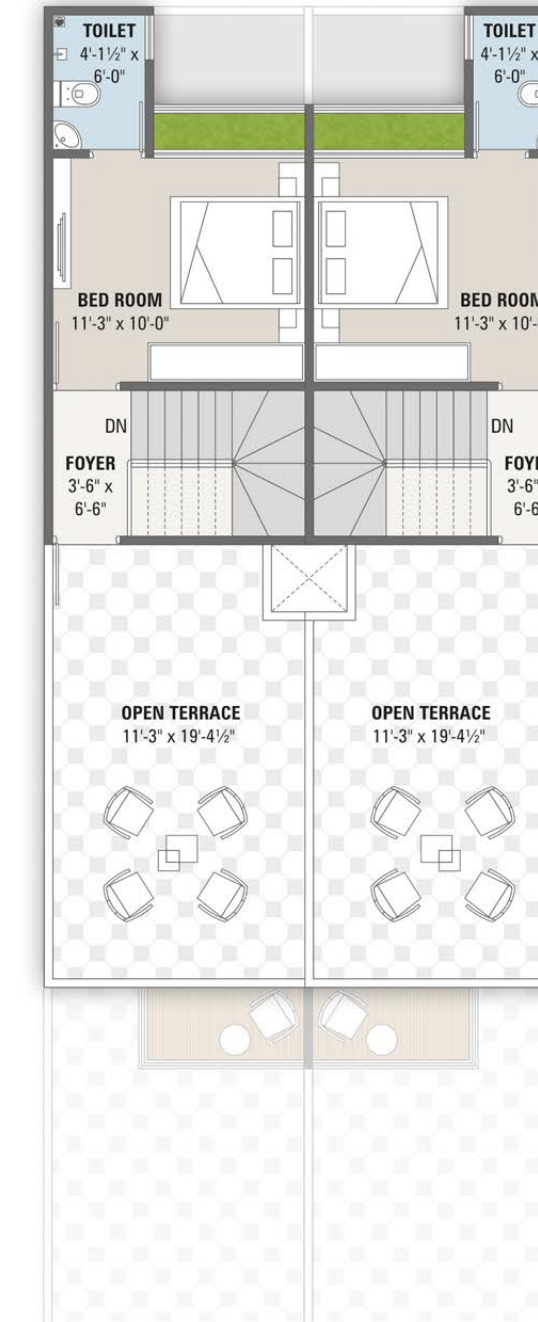
3 BHK UNIT PLAN
 { UNIT 12 TO 15 } TYPE - B



2ND FLOOR PLAN



2ND FLOOR PLAN



2ND FLOOR PLAN

4 BHK UNIT PLAN
 { UNIT 7 } TYPE - C



GROUND FLOOR PLAN

1ST FLOOR PLAN

2ND FLOOR PLAN

4 BHK UNIT PLAN
 { UNIT 8 } TYPE - D

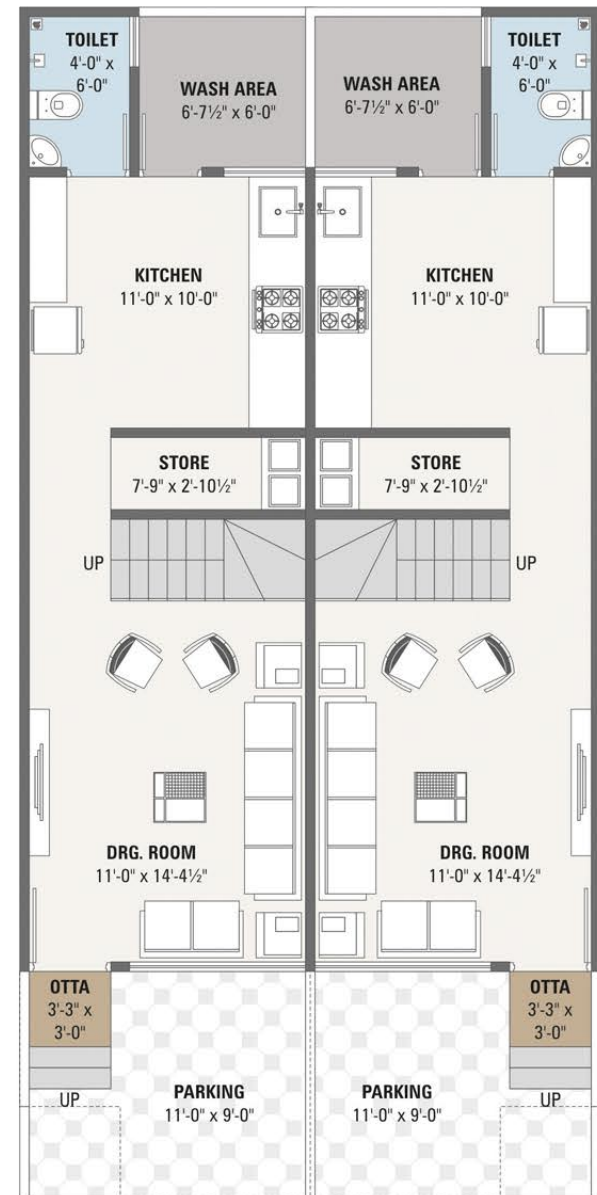


GROUND FLOOR PLAN

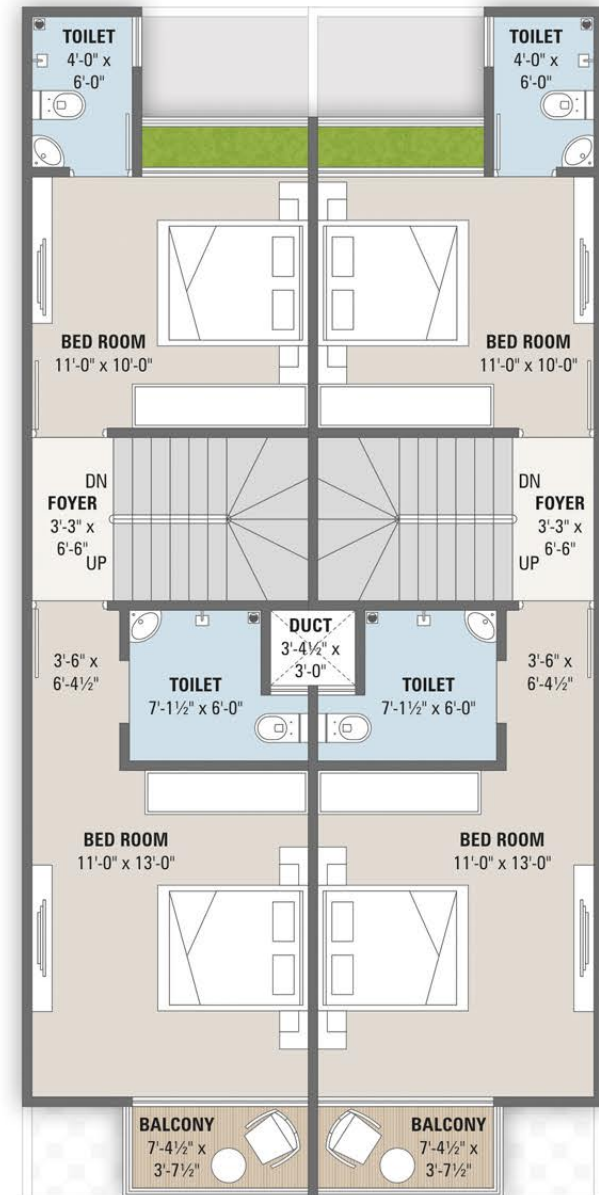
1ST FLOOR PLAN

2ND FLOOR PLAN

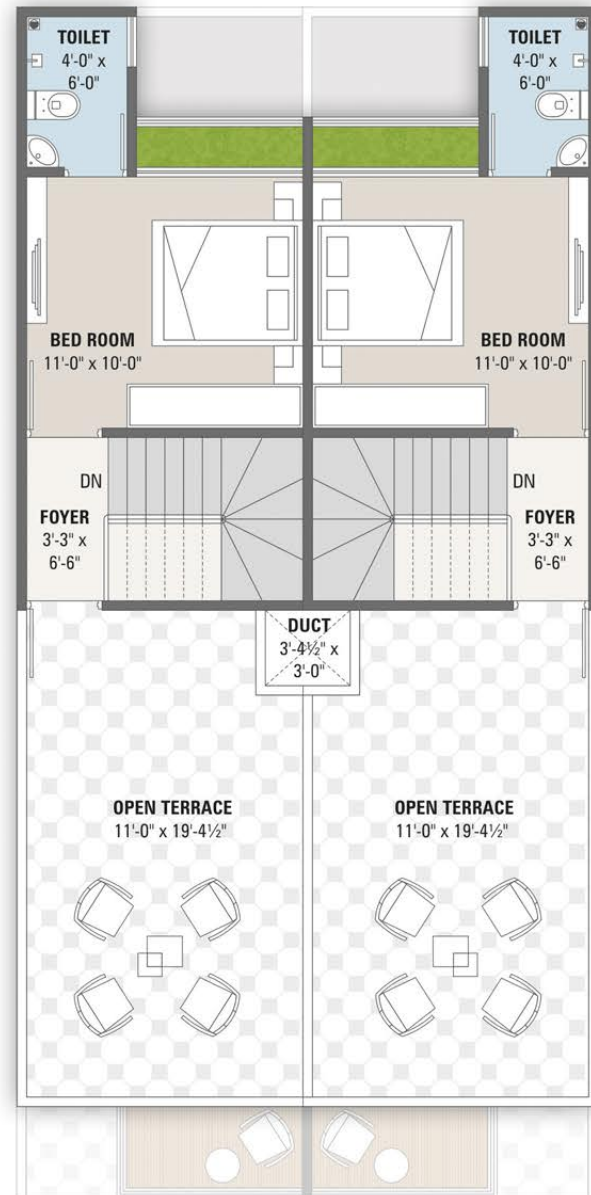
3 BHK UNIT PLAN
 { UNIT 16 TO 18 } TYPE - E



GROUND FLOOR PLAN

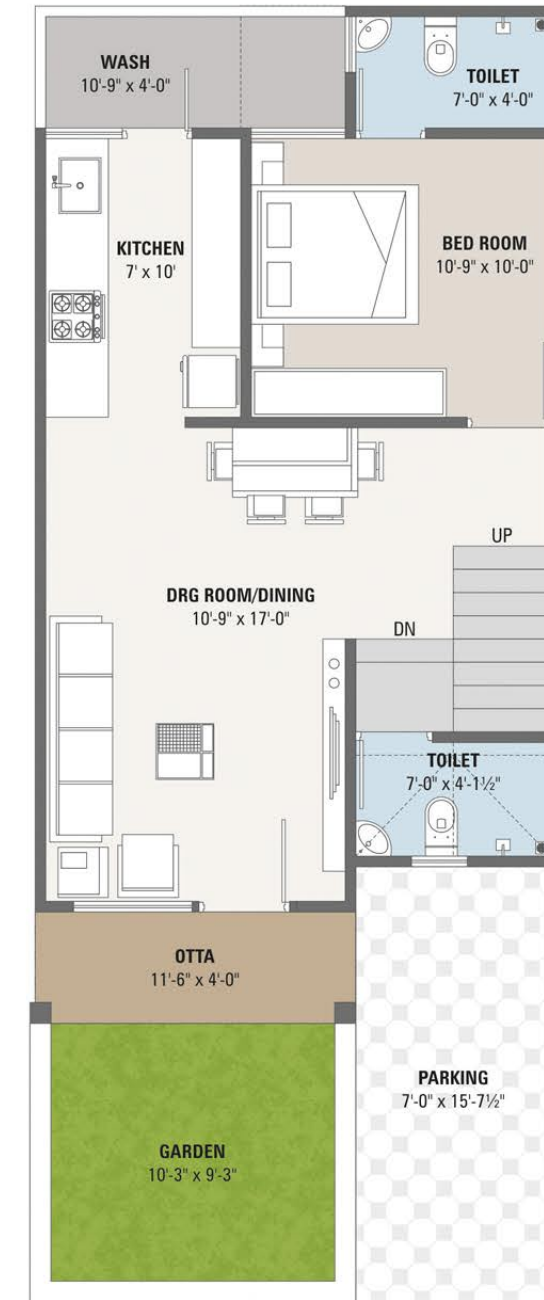


1ST FLOOR PLAN

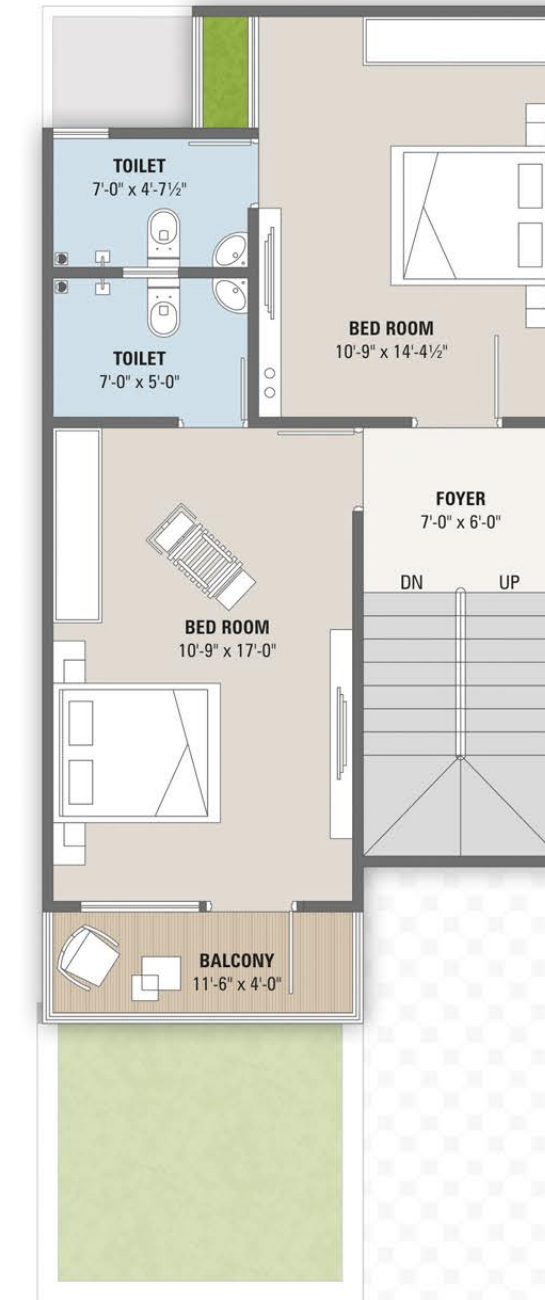


2ND FLOOR PLAN

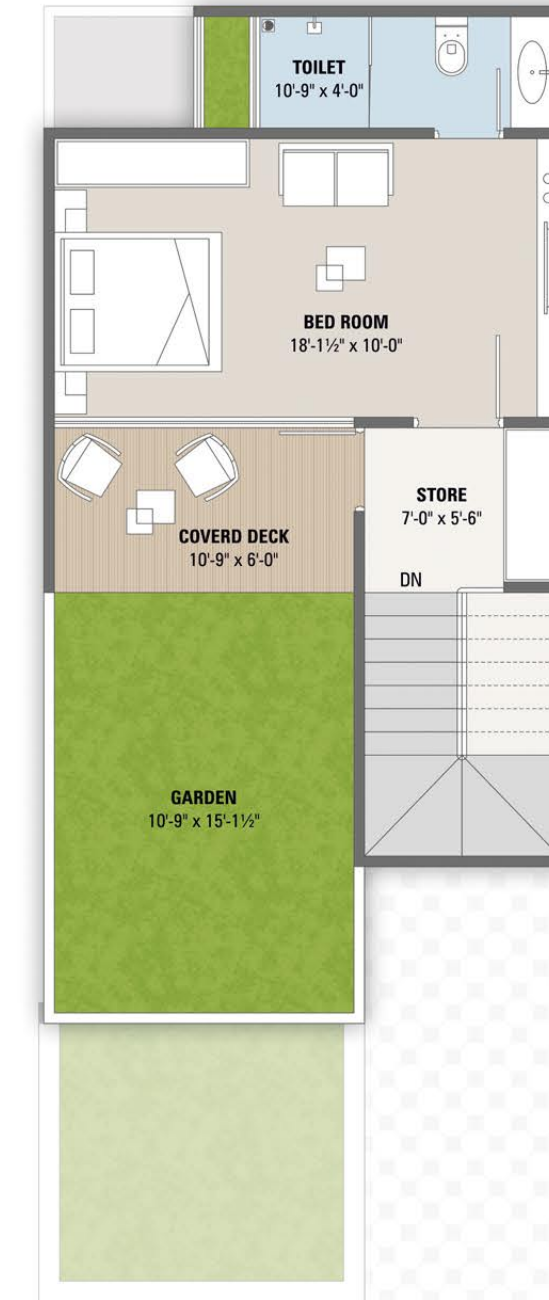
4 BHK UNIT PLAN
 { UNIT 19 TO 25 } TYPE - F



GROUND FLOOR PLAN



1ST FLOOR PLAN



2ND FLOOR PLAN



Luxury

at most affordable price !

The Kahan Villa is a home that fulfils all your aspirations, raises your status, offers modern luxuries and is a place where memories for a lifetime are made and cherished.

ATTRACTIVE ELEVATION | BEST LOCATION

A photograph of a happy family of four. A man is carrying a baby on his shoulders, and a woman is holding a young child. They are all smiling and looking towards the camera. The photo is set against a dark background with a decorative leaf pattern on the right side.



SPECIFICATION

STRUCTURE

Earthquake resistant RCC frame structure.

FLOORING

Vitrified Flooring in all Unit.

DOORS & WINDOWS

Decorative Main Door And Other Flush Door & Anodized / Powder Coated Single Glazed Aluminum Windows.

ELECTRIFICATION

Concealed ISI Copper Wiring With Modular Switch.

KITCHEN

Granite Platform with S.S. sink & ceramic / glazed tiles up to lintel level.

WALL FINISH / ELEVATION

External double coat plaster.
Internal double coat mala plaster.

COLOUR

External asian apex water proof colour.
Internal smooth finish white wall putty.

PLUMBING

ISI CPVC or UPVC pipes for water supply, PVC & SWR pipes for solid waste and drainage systems.
Percolation recharge wells as per the norms. Standard CP fittings.

TOILET

Glazed / Ceramic tiles upto lintel level, Standard C.P. Brass fittings.

TERRACE

Brick-bat concrete with china mosaic for heat reflection and thermal insulation.

DEVELOPER :

DS
BUILDCON

ARCHITECT :

H the
HAPPY DESIGN

**KAHAN
VILLA**

A Strong Foundation For Tomorrow

Site Address :

Nr. Maheshwari Society, Geratpur Railway Station Road,
Geratpur, A'bad -382435

M.: 94260 52888 | 99788 31990 | 85113 47143

Rera : PR/GJ/AHMEDABAD/DASKROI/Ahmedabad Municipal Corporation/RAA13172/270324/311227 | Web : gujrera.gujarat.gov.in

SCAN FOR LOCATION

