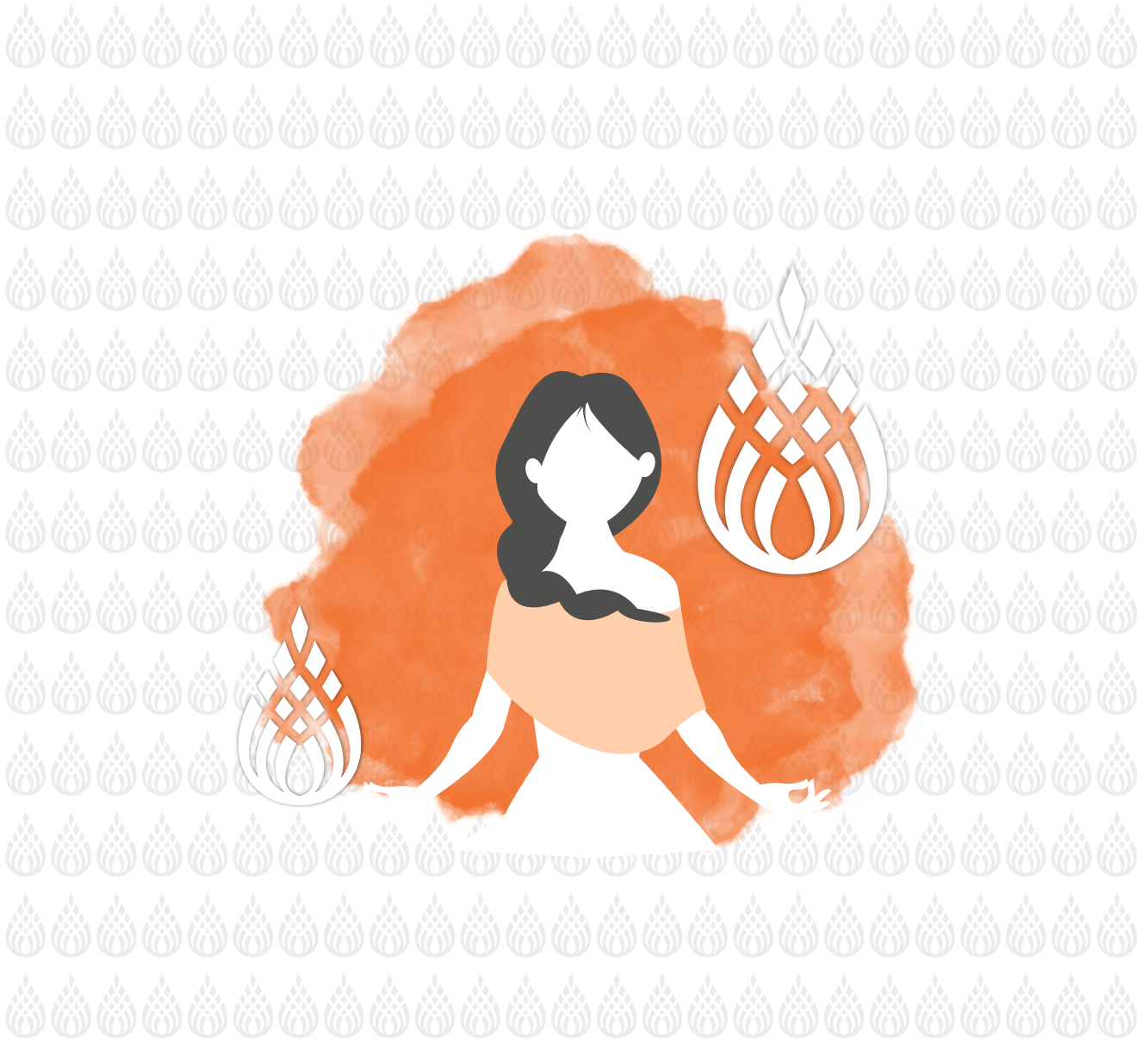




Lotus
Lifestyle

5BHK OPULENT VILLAS



PAUSE

THINK. REFLECT.

In the whirlwind of life, finding inner peace is essential. At Lotus Lifestyle, we recognize the value of pausing, thinking, reflecting, and cherishing memories. Your home here isn't just a place to live; it's your sanctuary, your refuge from the chaos. Experience a lifestyle where every breathe rejuvenates life, every corner whispers tranquillity, and every moment invites connection with yourself and your loved ones.

Call : +91 96620 90620 

WATCH VIRTUAL TOUR



GOOGLE MAP DIRECTION



Call : +91 96620 90620 



THE ULTIMATE LUXURY

Indulge in the epitome of luxury at Lotus Lifestyle. Our exquisite villas redefine opulence, offering a blend of modern elegance and timeless worldliness. Each villa is crafted with meticulous attention to detail, boasting opulent amenities and unparalleled comfort. From spacious interiors adorned with high-end finishes to private outdoor retreats enveloped in lush greenery, every aspect exudes the essence of luxury living.





PICTURE-PERFECT LIVING

At Lotus Lifestyle, convenience seamlessly blends with aesthetics. With ample parking space, you can be rest assured that your vehicles are securely accommodated, allowing you to focus on indulging in the beauty that surrounds you. Step outside and behold the breathtaking views that greet you from every corner, offering a visual symphony of natural splendour.





PRECISION IN DESIGN

Lotus Lifestyle exemplifies meticulous planning, evident in every detail of our layout. Our bird's-eye view showcases thoughtful design, seamlessly integrating functionality and aesthetics. From strategic amenities to harmonious space, each element will enhance your living experience.



THE LIFESTYLE LANES

As you wander through the inviting lanes of Lotus Lifestyle, you'll find yourself immersed in a world of serenity and charm. The inside lanes of our property offer a glimpse into the heart of our community—a place where neighbours become friends and every moment is filled with warmth and connection.

Step into a realm where every corner tells a story and every stroll is a journey of discovery.



SPECIFICATION

STRUCTURE

Earthquake Resistant R.C.C Frame Structure with Brick Masonry.

FLOORING

Vitrified Tiles Flooring in Living Room, Dining area, Passage, Kitchen and all Bed Rooms. Windows High Quality UPVC Section fully glazed windows with safety Grill on Ground Floor.

KITCHEN

Granite platform with stainless steel sink. Ceramic tiles dado over the platform. Wash area with ceramic tiles dado and natural stone flooring.

WALLS

Inside Mala finished plaster with putty and primer. Outside double coat plaster with acrylic paint.

TOILET

Designer wall tiles up to Lintel level. Ceramic tile flooring. Granite/stone counter with ceramic washbasin. C.P fittings And Vessels of Branded Make.

ELECTRICAL

Good quality I.S.I Modular switches & F.R. Wires. Provision for TV, Telephone and Internet points at convenient locations.

Provision of designated Space for self-installation of Lift.



URBAN ELEGANCE

Step into the serene embrace of Lotus Lifestyle, where even the inside lanes exude spaciousness and elegance. Our thoughtfully designed lanes offer ample room for movement, ensuring a smooth and comfortable journey within society. Experience the freedom of wide-open spaces as you navigate through the picturesque surroundings, surrounded by lush greenery and breathtaking views.



JOYFUL AMENITIES

Lotus Lifestyle offers a diverse range of amenities to enrich your daily life. From a fully-equipped gym to a spacious banquet hall, our facilities cater to every need. Whether you're hosting events in our party lawn or enjoying a relaxing swim, each amenity is designed to elevate your experience. With outdoor games, a children's play area, and more, amenities at Lotus Lifestyle ensure your every moment is filled with leisure and joy.

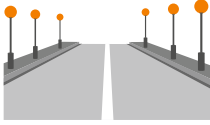


CLUBHOUSE COMFORT

Welcome to the clubhouse at Lotus Lifestyle, where community and comfort come together. It's a vibrant space where residents gather to socialize, stay active, and relax. Whether you're catching up with friends in the lounge, working out in gym, or enjoying games, there's something for everyone here. Join us in creating lasting connections and unforgettable moments at our clubhouse.



28+ AMENITIES



LUXURIOUS LIFESTYLE LIVING

- Exclusive Lifestyle Club
- Magnificent Main Grand Entrance
- Well-Paved RCC Internal Road
- Elegant Street Lights and Outdoor Lightings



SUSTAINABLE LIVING

- A Common Rain water harvesting
- Provision for a Solar Energy Point
- Provision for an EV Charging Point
- Provision for a Heat pump & a Pressure Pump Point



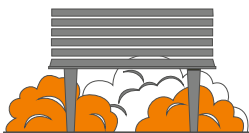
HEALTH & WELLNESS

- State-of-the-Art Fully Equipped Gym
- Modern Change / Steam / Wash Room
- Outdoor Gym
- Serene Yoga Area
- Entertaining Indoor Game Room
- Refreshing Swimming Pool / Splash Pool
- Spacious Deck Area
- Convenient Changing Room



SAFETY & SECURITY

- Secure Security Cabin
- 8 CCTV Cameras for Common Areas
- Digital Video Door Phone for Every Villa
- Digital Intercom Facility between Villa and Security Cabin
- Secure Gated Community
- Protective Safety Fencing



COMMUNITY COHESION

- Serene Temple
- Comfortable Senior Citizen Seating
- Tranquil Terrace Seating
- Cozy Library With Lounger Chairs



CONVENIENCE, COMFORT

- Exclusive Club with Elevator Access
- Welcoming Reception Area
- Two Comfortable Guest Rooms with Attached Washroom
- Relaxing Lounge Area
- Convenient Pantry Area



CELEBRATIONS MADE EASY

- Elegant Banquet Hall
- Spacious Party Lawn
- Kitchen / Utility Area

Call : +91 96620 90620



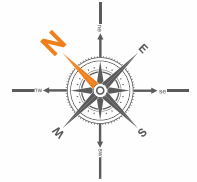
AQUA OASIS

Dive into and relax at the luxurious swimming pool. With its serene ambiance and inviting waters, the pool offers the perfect sanctuary for unwinding and rejuvenating. Whether you're seeking a refreshing dip on a hot day or a tranquil evening swim under the stars, the pool provides the ideal setting for creating unforgettable moments of relaxation and bliss. Indulge in a leisurely splash or simply lounge by the water's edge, soaking in the peaceful atmosphere and savouring every moment of serenity.

18.00 MT WIDE T.P. ROAD



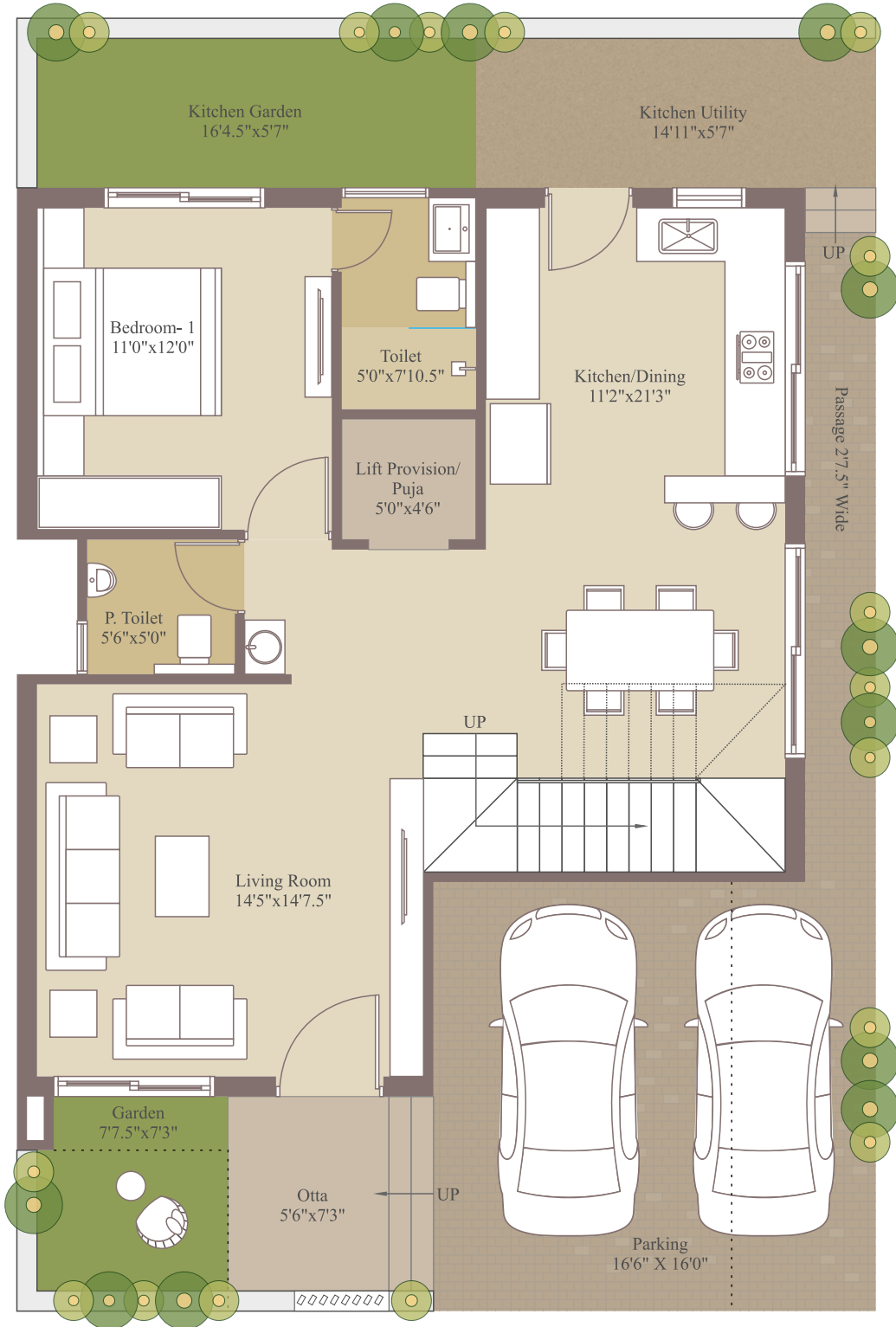
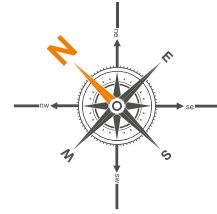
LAYOUT PLAN



| | | | | | | | |
|----|------------|----|------------|----|------------|----|------------|
| 01 | 2219 Sq.Ft | 12 | 1555 Sq.Ft | 23 | 2269 Sq.Ft | 34 | 2746 Sq.Ft |
| 02 | 1533 Sq.Ft | 13 | 1533 Sq.Ft | 24 | 1533 Sq.Ft | 35 | 1541 Sq.Ft |
| 03 | 1533 Sq.Ft | 14 | 1533 Sq.Ft | 25 | 1533 Sq.Ft | 36 | 1538 Sq.Ft |
| 04 | 1533 Sq.Ft | 15 | 1533 Sq.Ft | 26 | 1533 Sq.Ft | 37 | 1535 Sq.Ft |
| 05 | 1533 Sq.Ft | 16 | 1533 Sq.Ft | 27 | 1533 Sq.Ft | 38 | 1532 Sq.Ft |
| 06 | 1533 Sq.Ft | 17 | 1533 Sq.Ft | 28 | 1533 Sq.Ft | 39 | 1749 Sq.Ft |
| 07 | 1533 Sq.Ft | 18 | 1533 Sq.Ft | 29 | 1533 Sq.Ft | 40 | 1833 Sq.Ft |
| 08 | 1533 Sq.Ft | 19 | 1533 Sq.Ft | 30 | 1533 Sq.Ft | 41 | 1883 Sq.Ft |
| 09 | 1533 Sq.Ft | 20 | 1533 Sq.Ft | 31 | 1533 Sq.Ft | 42 | 1886 Sq.Ft |
| 10 | 1533 Sq.Ft | 21 | 1533 Sq.Ft | 32 | 1533 Sq.Ft | 43 | 2304 Sq.Ft |
| 11 | 1555 Sq.Ft | 22 | 2250 Sq.Ft | 33 | 1555 Sq.Ft | | |



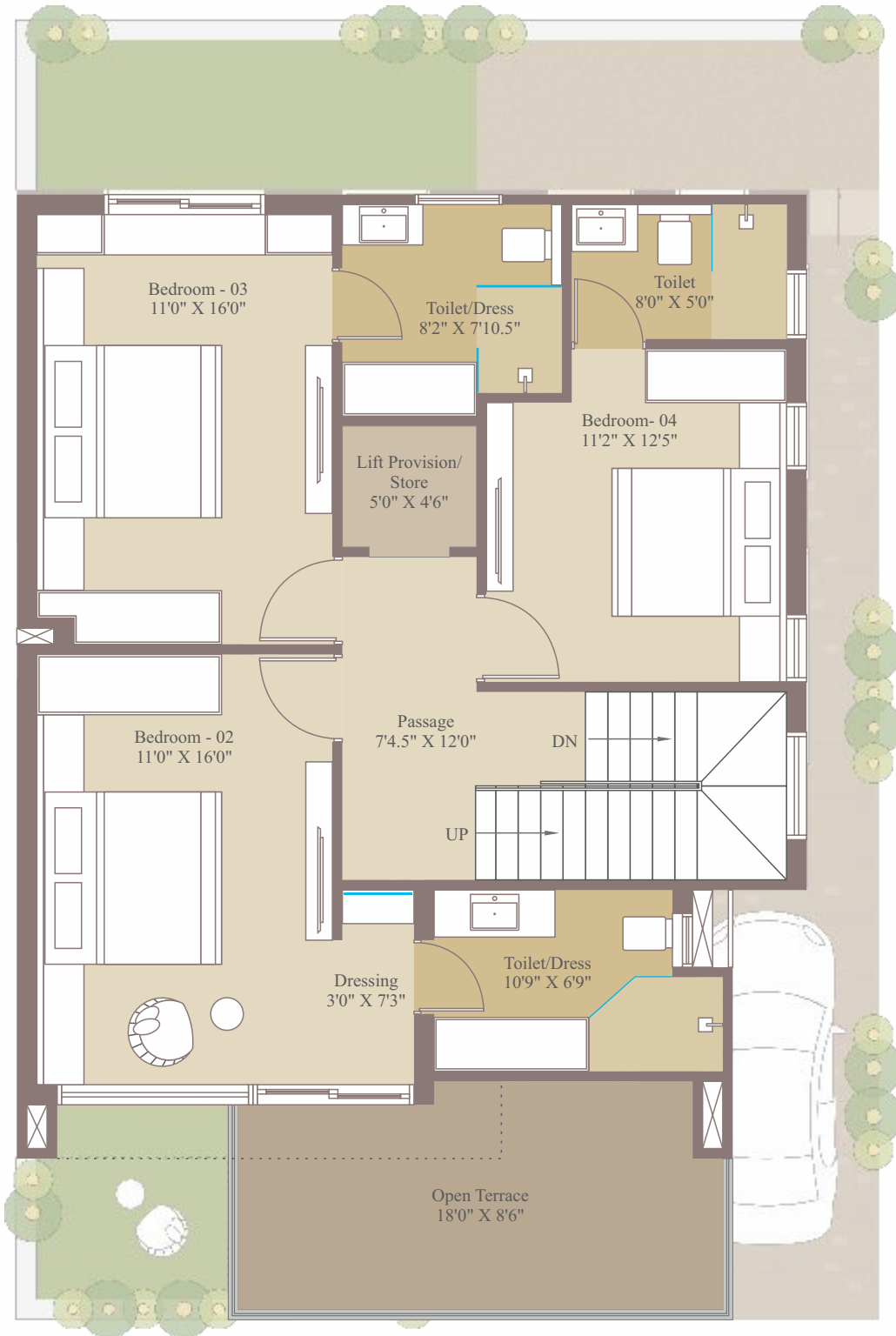
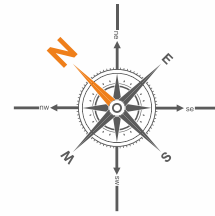
LIFESTYLE VILLA - No.: 27



GROUND FLOOR PLAN



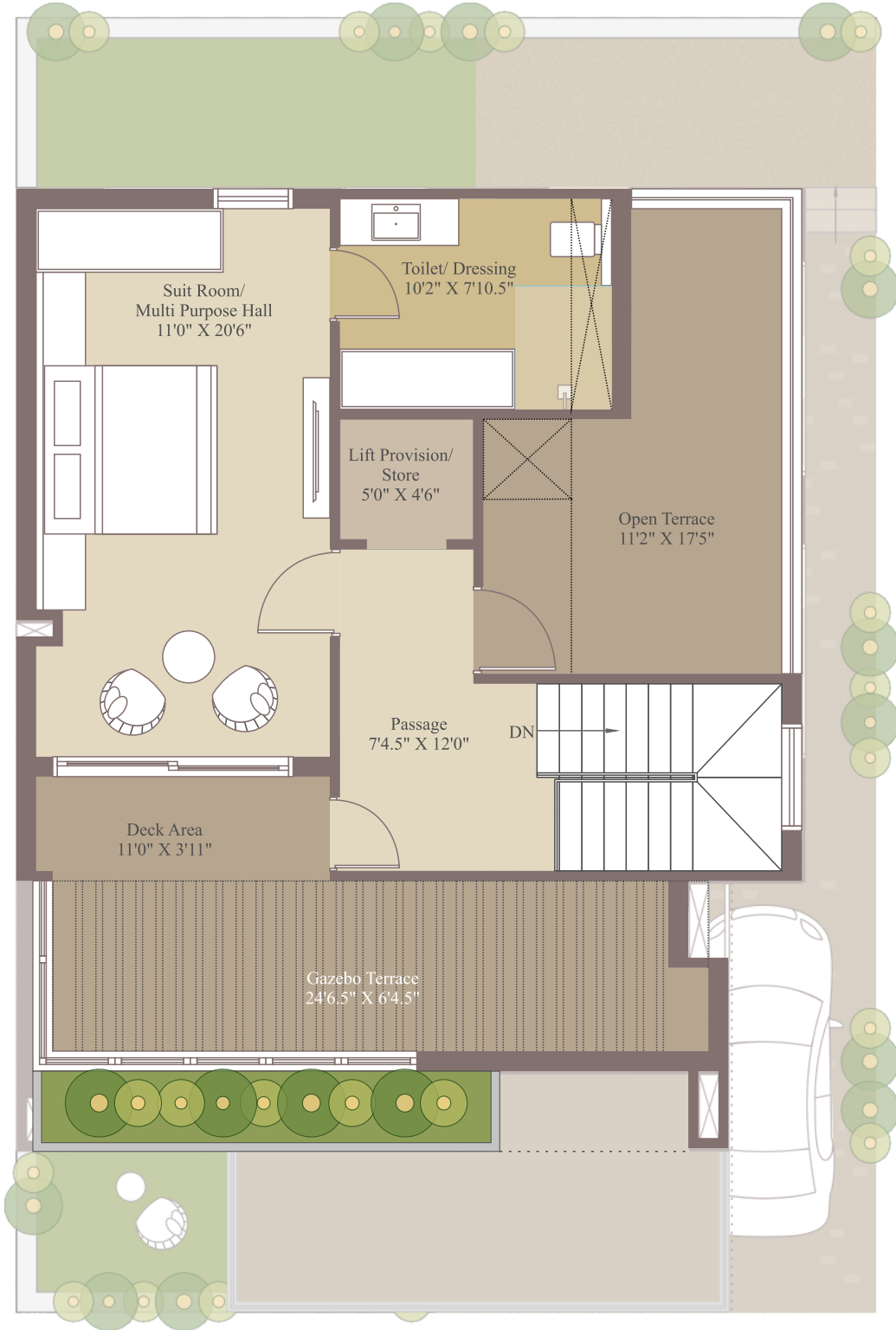
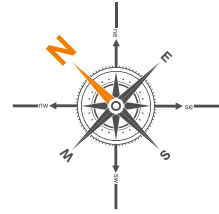
LIFESTYLE
VILLA - No.: 27



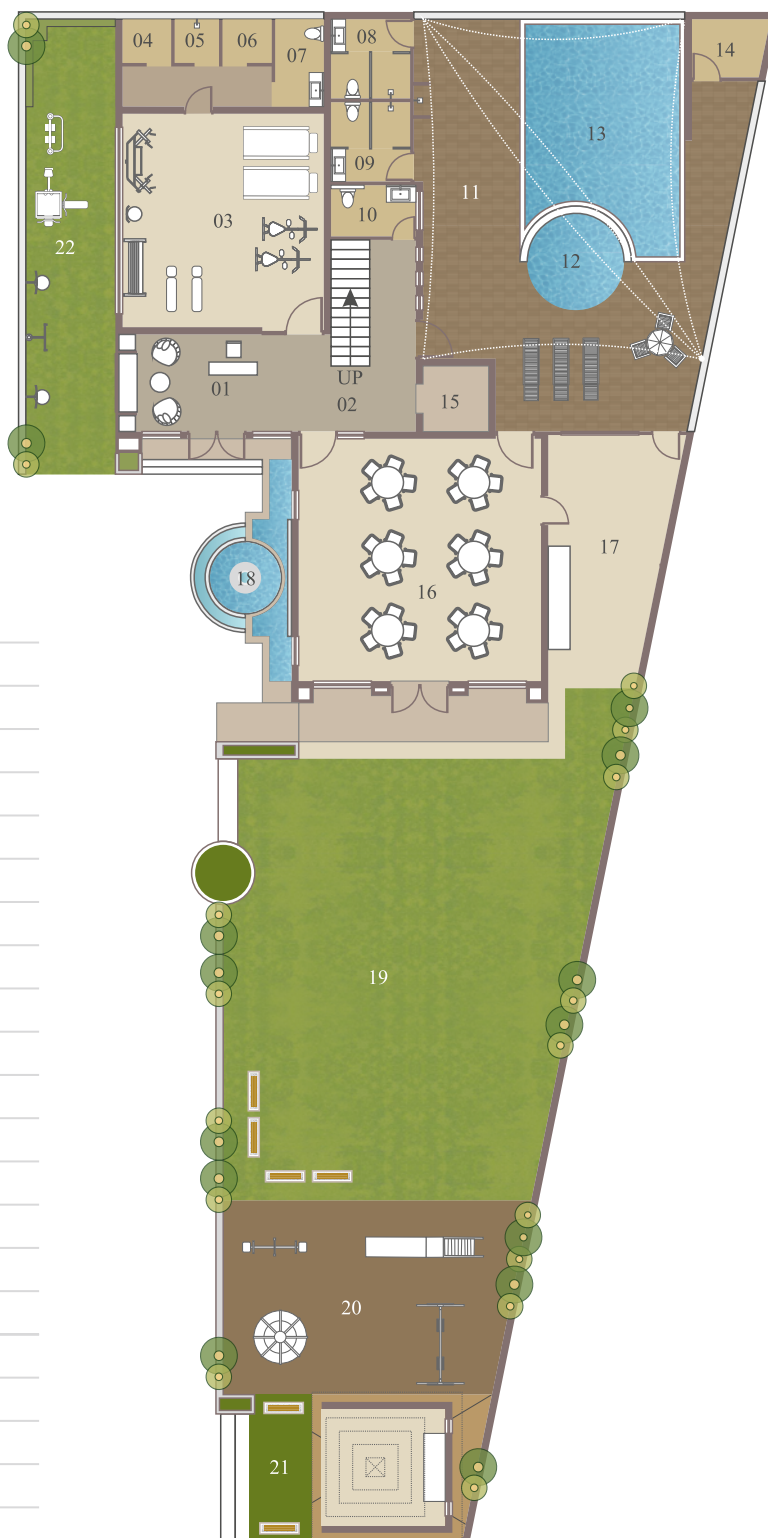
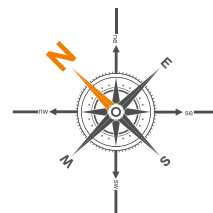
FIRST FLOOR PLAN



LIFESTYLE
VILLA - No.: 27

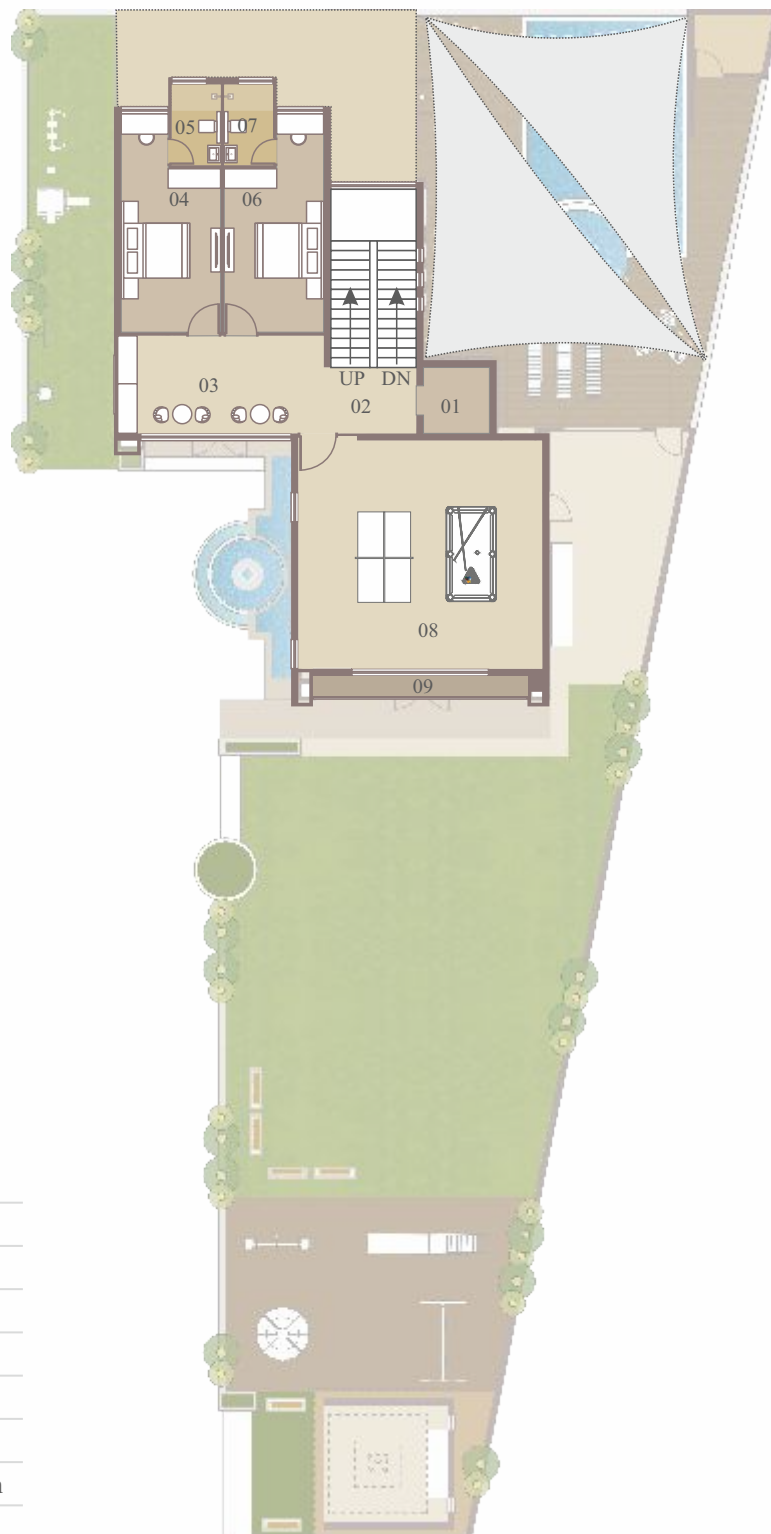
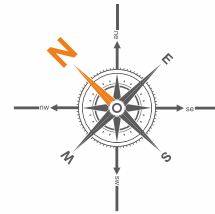


SECOND FLOOR PLAN



GROUND FLOOR PLAN

- 01 Reception Area
- 02 Passage
- 03 Gymnasium
- 04 Changing Room
- 05 Shower Room
- 06 Steam Room
- 07 Toilet
- 08 L. Change Room
- 09 G. Change Room
- 10 Common Toilet
- 11 Deck Area
- 12 Kids Pool
- 13 Swimming Pool
- 14 Pump Room
- 15 Lift
- 16 Banquet Hall
- 17 Kitchen / Utility
- 18 Fountain
- 19 Banquet Lawn
- 20 Kids Play Area
- 21 Temple / Sitting
- 22 Out Door Gym



FIRST FLOOR PLAN

- 01 Lift

- 02 Passage

- 03 Lounge / Pantry

- 04 Guest Room

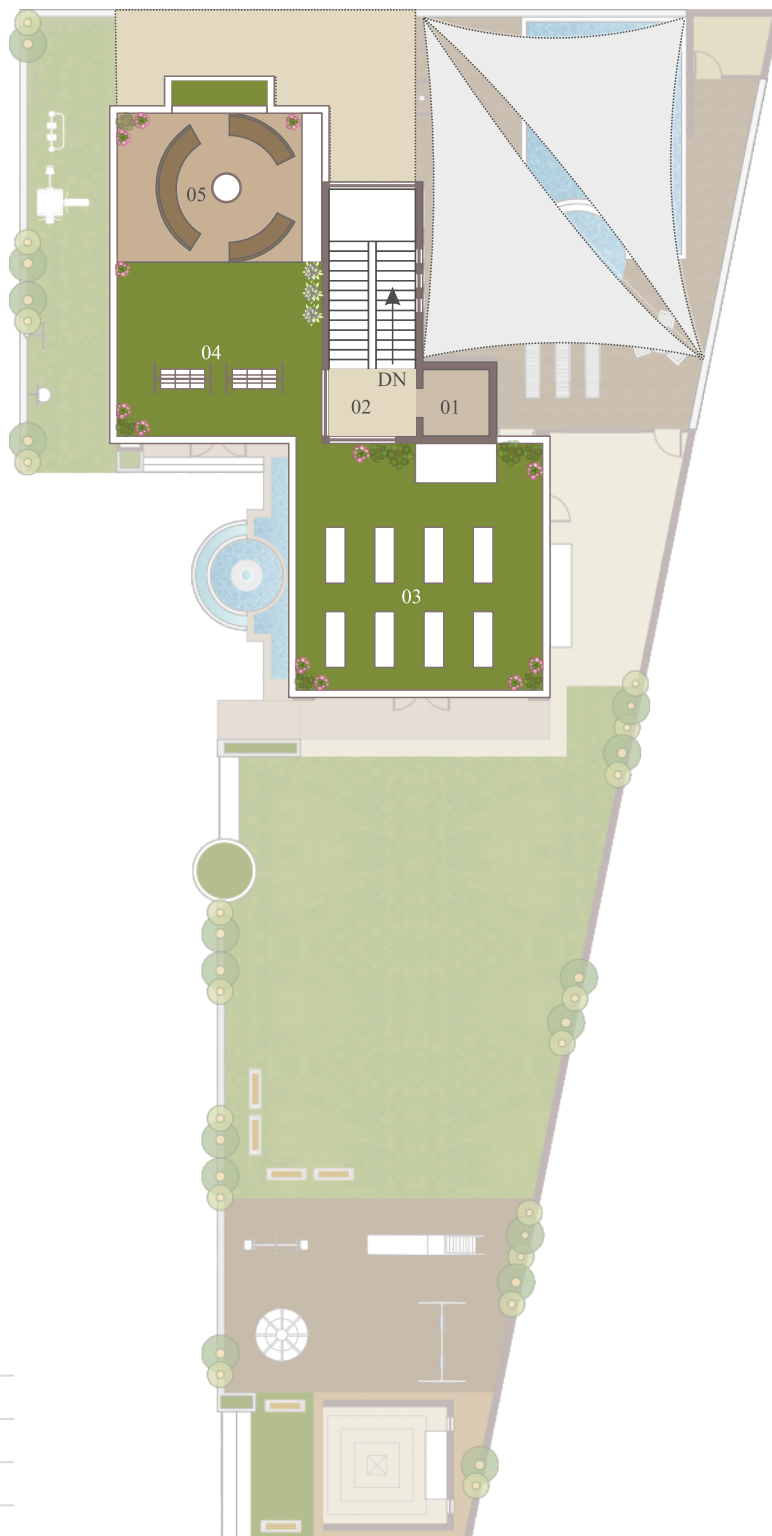
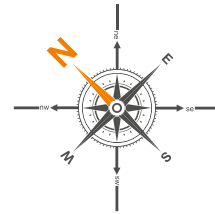
- 05 Att. Wash Room

- 06 Guest Room

- 07 Att. Wash Room

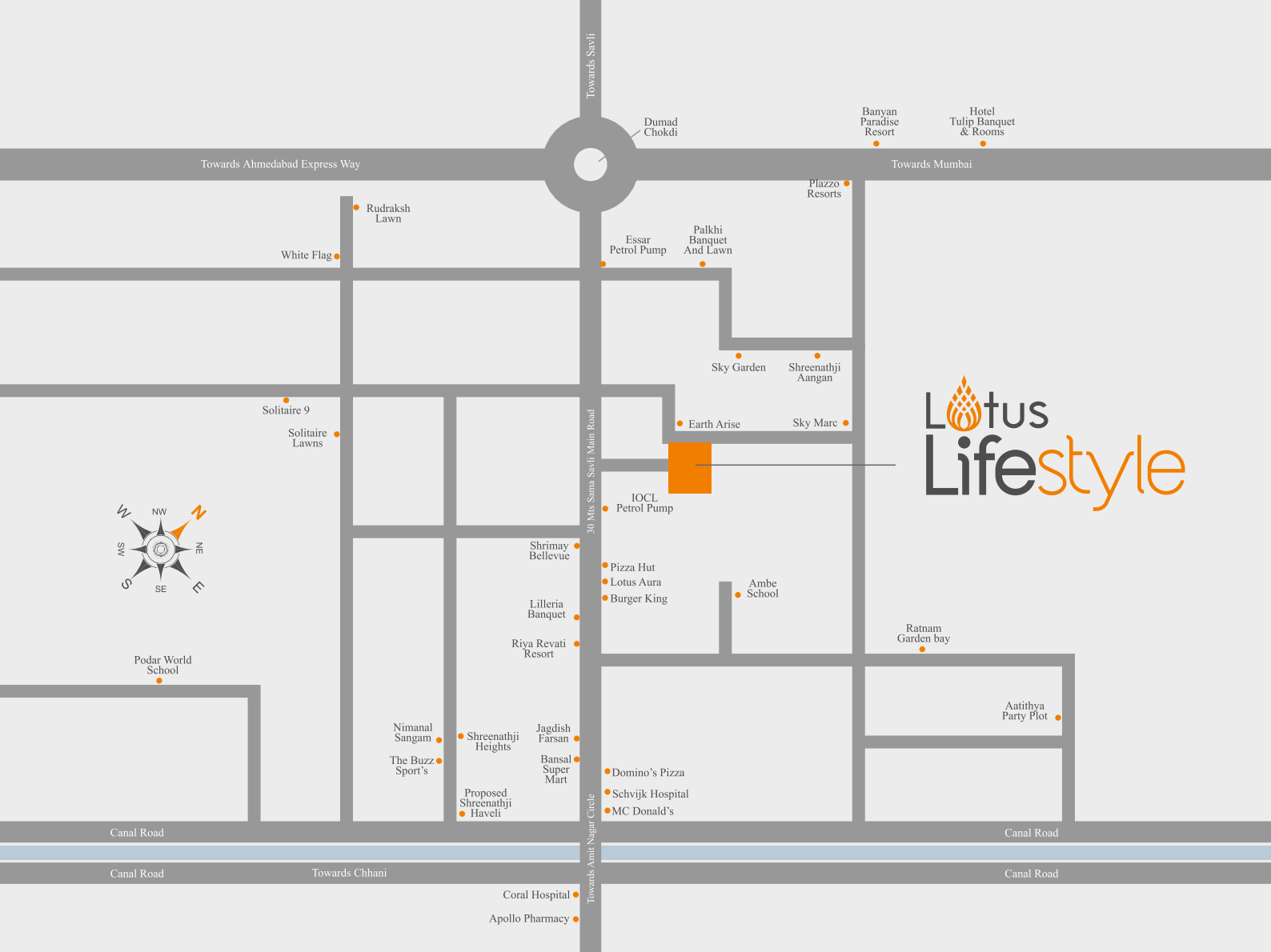
- 08 Indoor Game Room

- 09 Balcony



SECOND FLOOR PLAN

- 01 Lift
- 02 Passage
- 03 Yoga Area
- 04 Open Terrace
- 05 Open Sitting



1. The following will be addition to agree upon on price as per government norms: (a) Stamp Duty & Registration Charges, (b) GST, Service tax, VAT or any such additional government taxes if applicable in future. (c) Maintenance Deposit, (d) Deposit for New Electric Connection. (e) Legal Charges.
2. If any new tax applicable by Central or States Government or Local Govt. Body in future, it will be borne by the buyers / members.
3. Continuous default in payments leads to cancellation as per terms and condition of RERA.
4. In case of delay in water supply, light connection, drainage work by the concerned local authority for which are forming part of Local authority, developers will not be responsible.
5. Developer will not be responsible for any damage or late possession due to natural calamities.
6. Changes in any structural design & changes in any external facade will not be permitted without prior permission of developer and project designer.
7. Internal changes/work will only be permitted with prior permission & advance payments.
8. Outdoor AC units will be fitted/installed as per provision provided in the designated placed by the Project Designer.
9. Terms and Conditions will be as per Allotment Letter and subject to Agreement for Sell.

Developer
Lotus Buildcon +91 98986 10063

Site : **LOTUS LIFESTYLE**
Located next to Lotus Aura, B/S IOCL pump,
Sama-Savli Main road, Vadodara - 390018

Sales Enquiry
Email : sales@lotusbaroda.com
Web: www.lotusbaroda.com

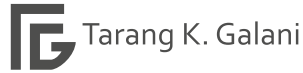
Call : +91 96620 90620 



Project Designer



Structure Designer



Plumbing consultant



Electrical consultant



RERA NO:

PR/GJ/VADODARA/VADODARA/Vadodara Municipal Corporation/RAA13039/260224/310328
www.gujrera.gujarat.gov.in




CHAT
WITH US



3D WALK
THROUGH
QR CODE

