



ENERGIZED WORK SPACES



A NEW LANDMARK AWAITS

Millennium Business Hub is an imposing architecture that is impeccably planned and brilliantly designed. Where luxury is reflected in every aspect and is accessorised with the finest amenities. A good look at this magnificent structure and you will be amazed forever.

2 BASEMENT + GROUND FLOOR
+ 11 TH FLOOR



Artistic Impression



The success story of the business doesn't always have to be told. Sometimes it can be seen.
Presenting the finest business hub of Surat, Millennium Business Hub...



SURAT'S BEST WORKSPACE TOWER

Centrally located, intelligently designed, world-class in aesthetics and amenities and with flexible and spacious office layouts, Millennium Business Hub offers you an unmatched opportunity to transform your business into successful empire.



CORPORATE OFFICE



ACCOUNTING



MULTINATIONAL COMPANY

- Height of office space on third floor & Above - Slab to Slab 11 Ft.
- 2 Level basement parking





Millennium Business Hub - Built for Growth...
Built for Profits



Artistic Imression



Reception Area

Artistic Imression



Entry Foyer

Artistic Imression



Artistic Impression



SURAT'S FINEST I.T. HUB

Be it web developer, ISO developer, hardware, software or any other technology. Millennium Business Hub makes for the exclusive hub for the information technology.

It is an exceptional and exclusive commercial space that redefines the complete business experience.

- Height of shops on ground, first & second floor & Above - Slab to Slab 15 Ft.
- Ground, first & second floor allocated for wholesale market.



WEB DESIGN HUB



APPLICATION MAKER



SECURITY SYSTEM



C.A. HOUSE



ADVOCATE OFFICE



SURAT'S ICONIC BUSINESS HUB

Whether you are entering into a business or looking to expand it, this is an opportunity that comes rarely. Make a smart investment today by starting your business at Millennium Business Hub.



SURAT'S FOREMOST DOCTOR HOUSE ADDRESS

Millennium Business Hub is fully equipped to cater all the infrastructural and operational requirements of the doctor house. With the location so prominent, structure so well designed and amenities so thoughtful, it will undoubtedly become the most prestigious address for the Doctor House.

- 8 stretcher / passenger lift & 1 Goods lifts
- Specially allocated space for Doctor House



HEALTH CARE



PHARMACY



LABORATORY



GROUND FLOOR PLAN

15'0" FLOOR HEIGHT
All dimensions / area unfinished approximate, average & subject to variations.



ENTRY / EXIT

ENTRY / EXIT

60.00 MT. WIDEROAD

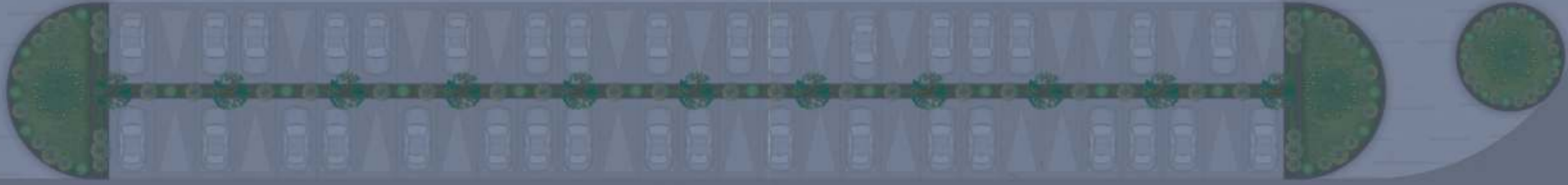
15.00 MT. WIDE ROAD



FIRST FLOOR PLAN

15'0" FLOOR HEIGHT

All dimensions / area unfinished approximate, average & subject to variations.



60.00 MT. WIDEROAD

15.00 MT. WIDEROAD





SECOND FLOOR PLAN

15'0" FLOOR HEIGHT

All dimensions / area unfinished approximate, average & subject to variations.



15.00 MT. WIDEROAD

60.00 MT. WIDEROAD





THIRD FLOOR PLAN

11'0" FLOOR HEIGHT

All dimensions / area unfinished approximate, average & subject to variations.



60.00 MT. WIDEROAD

15.00 MT. WIDEROAD



4th to 11th FLOOR PLAN 11'0" FLOOR HEIGHT

All dimensions / area unfinished approximate, average & subject to variations.



Unit No.	Dimensions	Area (SFT)
21	38'6" x 39'3"	C.A. 1433
20	17'0" x 38'0"	C.A. 648
19	17'0" x 36'6"	C.A. 620
18	17'0" x 34'9"	C.A. 834
17	17'0" x 25'0"	C.A. 425
16	17'0" x 23'9"	C.A. 404
15	17'0" x 22'4"	C.A. 380
14	25'0" x 20'4"	C.A. 508
01	38'6" x 42'4"	C.A. 1545
02	17'0" x 42'4"	C.A. 720
03	17'0" x 42'4"	C.A. 720
04	17'0" x 42'4"	C.A. 720
05	17'0" x 42'4"	C.A. 720
06	25'0" x 42'4"	C.A. 1058
07	27'2" x 42'4"	C.A. 1150
08	25'0" x 42'4"	C.A. 1058
09	17'0" x 42'4"	C.A. 720
10	17'0" x 42'4"	C.A. 720
11	17'0" x 42'4"	C.A. 720
12	17'0" x 42'4"	C.A. 720
13	25'0" x 42'4"	C.A. 1058

60.00 MT. WIDEROAD

15.00 MT. WIDEROAD



A NEVER-BEFORE SHOWCASE FOR YOUR BRAND

Limited Edition Retail Spaces with
PREMIUM BRANDS



And Many More Brands Are Coming Soon



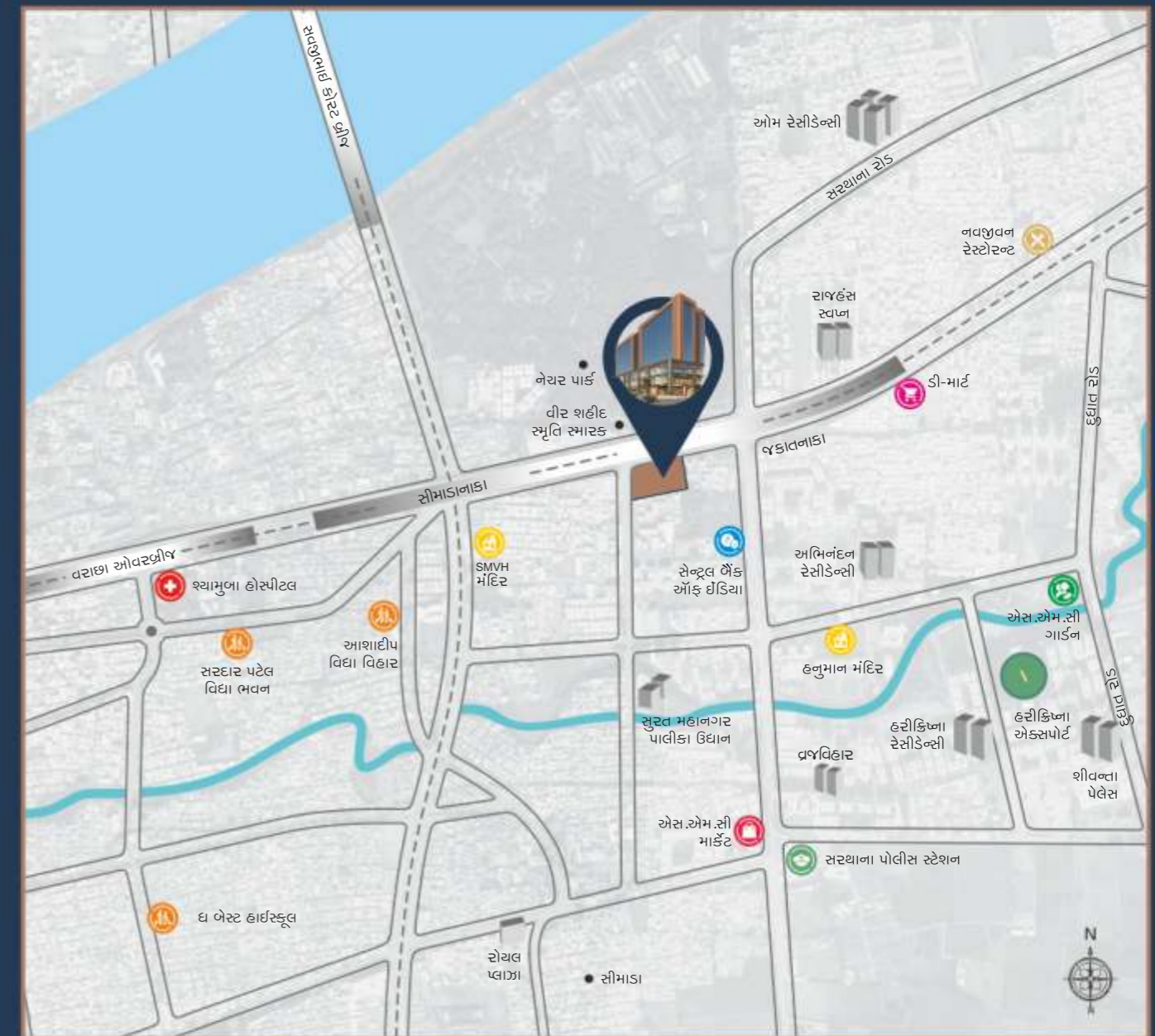
KEY PROJECT HIGHLIGHT

 All shops and offices are designed with maximum frontage along the road	 2 level basement parking with dedicated parking space
 8 stretcher & passenger lifts and 1 Goods Lift	 Spacious visitor parking
 Digitally integrated fire safety sensors	 Modern & Attractive Elevation
 Corporate reception with waiting space	 Mechanical Parking
 Innovative interiors made from an exclusive mesh finish	 Exclusive mechanic air exhaust system for each unit
 Hi-tech structure design	 Vastu compliant
 Height of shops on ground, first and second floor -Slab to Slab 15'0" Ft.	 Height of office space on third floor and above -Slab to Slab 11'0" Ft.
 High-tech safety and security measures	 Weather friendly interiors

Notes:

- All rights are reserved by the developer. • Legal charges, stamp duties, registration charges, G.E.B., service tax, G.S.T., VAT & gas connection charges etc. to be borne by the members.
- Rights reserved by the developers to make any changes in plan, elevations and other details which will be binding to all the members. • Subject to Surat jurisdiction. • Any new taxes announced by the government / S.M.C / authority will be borne by the member / buyer during the project. • This information book is the property of developer. Cannot be used as legal document or reproduce without their permission. • Changes in services of individual units will not be permissible. • Any external signages for offices shall not be permitted for all time to come. • The developer has the final rights over the decision regarding the lifetime maintenance. • The measurements of the shops are as per the unfinished wall to wall finish. • This brochure is only for private circulation of general information to the members and shall not form a part of any agreement. It can be changed without prior notice.

LOCATION THAT CONNECTS BUSINESS
Nice Location... Nicer Connectivity...



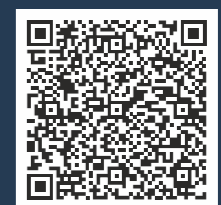
"MILLENNIUM BUSINESS HUB"
Nr. Sarthana Jakatnaka, Varachha Main Road, Surat.

For More Info. : **+91-99135 56000**

sales@laxmidelover.com

www.laxmidelover.com

SCAN FOR LOCATION



DEVELOPERS



ARCHITECT



STRUCTURE ENG.



A Project By :

