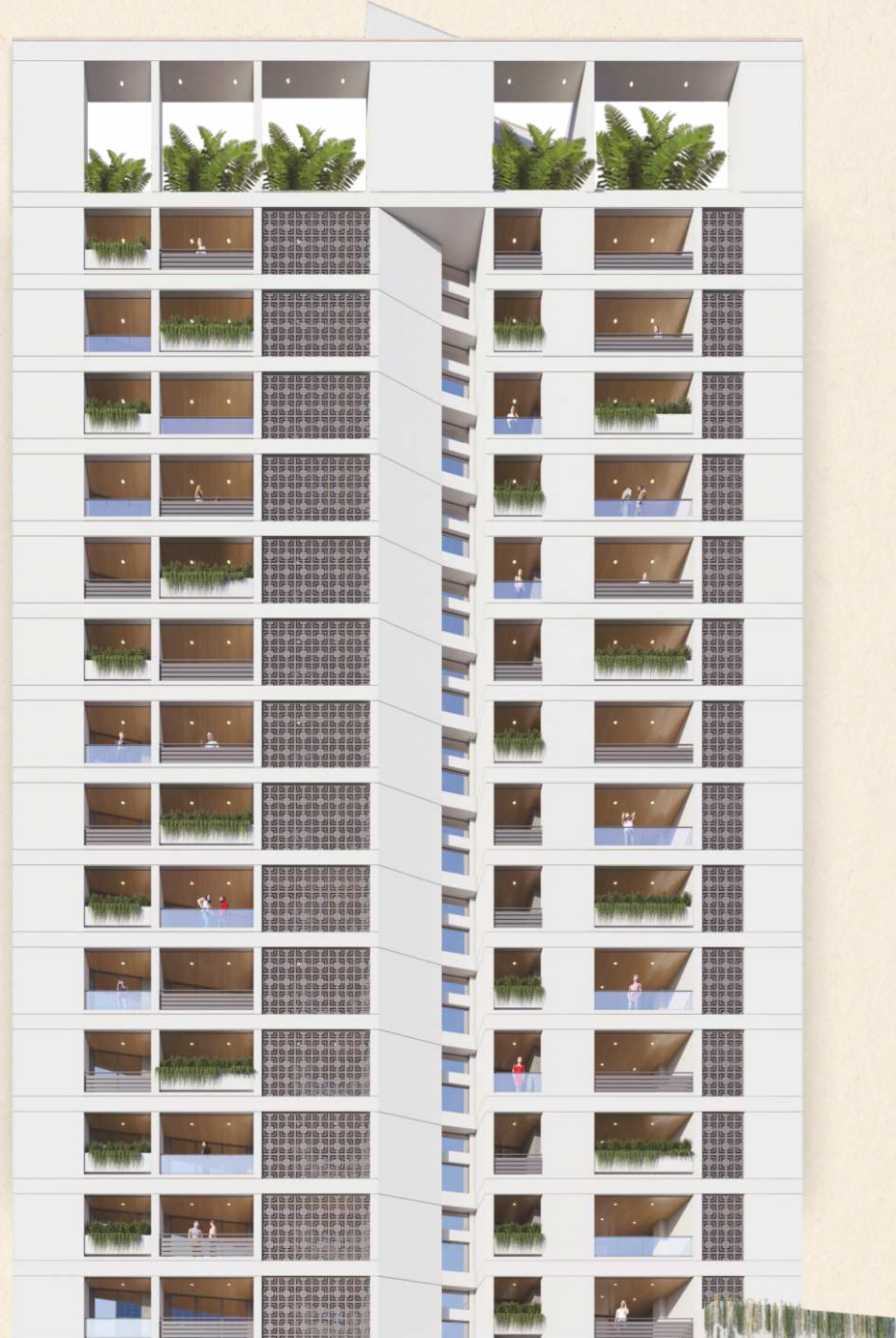


# THE MILLENNIUM GLORIA

4 BHK LUXURIOUS FLAT

રાજકોટના હૃદય

સમાન વિસ્તારમાં





2528 Sq. Ft.

2317 Sq. Ft.



FLAT 02  
CARPET- 2317 SQ FT



FLAT 01  
CARPET- 2528 SQ FT

TYPICAL FLOOR PLAN







## SPECIFICATION



### FLOORING

ITALIAN MARBLE in Living Dining and kitchen  
4' X 2' TILES in Rooms And Bathrooms (Vermora Qutone and etc.)



### WALL FINISH

Inside – smooth plaster with putty finish  
Outer – Texture plaster with waterproof acrylic colour



### KITCHEN

kitchen top with Marble and kitchen wall cladding with marble up to lintel level Electrical and plumbing points according to requirement Facility for R.O. and washing point in kitchen and wash area



### PLUMBING

Premium quality concealed plumbing, sanitary fitting, and AC drainage line.



### DOOR

Main door with safety door with veneer finish and all internal flush door.



### SECURITY SYSTEM

CCTV and Security guard 24 x 7



### WINDOW (Sound Proof)

Powder coated aluminium section window including sill.



### LIFT

Mitsubishi Company with latest technology



### BATHROOM

Sanitary Ware - Duravit  
Bath Fittings - Kohlar (with Body Jet)



### CONSTRUCTION

Earthquake resistant R.C.C. frame structure



### ELECTRIFICATION

Switches, MCB and wires from HAVELLS company



### POWER BACK-UP

DG with common lighting and lift.

## AMENITIES



CAMERA 24X7



SECURITY



GROUND FLOOR  
PARKING



BASEMENT  
PARKING



FIRST FLOOR  
PARKING



PLAY AREA



GYM



BANQUETTE  
HALL



A.C. RECEPTION  
AREA



MINI THEATER

## THE MILLENNIUM GLORIA

Near Nana Mava Circle, 150ft Ring Road, Rajkot.

Contact :

**Chintan Khambhati** +91 88668 50751 | **Niraj Khambhati** +91 93757 56661