

Introduce the shine in your  
home today !



WELCOME TO  
FINEST LIVING SPACES CRAFTED FOR  
**A PERFECT LIFE**



2 & 3 BHK Life Spaces...

**Shikhar**  
shine

Wake up to serene sunrises and starlit nights stay above the din of traffic and chaos. Enjoy open skies and panoramic city views, for once, you aren't dreaming you're living your dream...

ARCHITECTURE EXCLUSIVITY... 



  
**Shikhar**  
shine

WITNESS HOMES THAT  
BLEND COMFORT,  
**LUXURY AND**  
ENVIRONMENT IN  
PERFECT HARMONY IN  
MORE WAYS THAN ONE!



\*Artistic Image

A majestic entrance warmly invites you and sets the mood for the luxury that is to follow

ATTRACTIVE ENTRANCE...



**Shikhar**  
shine

THE PERFECT ADDRESS FOR  
CONTEMPORARY LIVING UNLOCK  
**YOUR PARADISE**  
OF PEACE AND HAPPINESS  
BECAUSE EVERY DAY HERE IS  
A JOYFUL BEGINNING



Here, you get to embrace and experience an extensive range of fabulous lifestyle amenities that let you relax and rejuvenate in the most wonderful way...

PREMIUM AMENITIES...



**Shikhar**  
shine



Landscaped Garden



Yoga Space



Sittings Area



Basement Parking



Children Play Area



Gazebo



C.C. TV Camera in  
Common Area



Ample Natural Light  
& Ventilation



2 Elevator per block  
& Large foyer



Fire Safety



Security



24 hrs. Water  
with meter

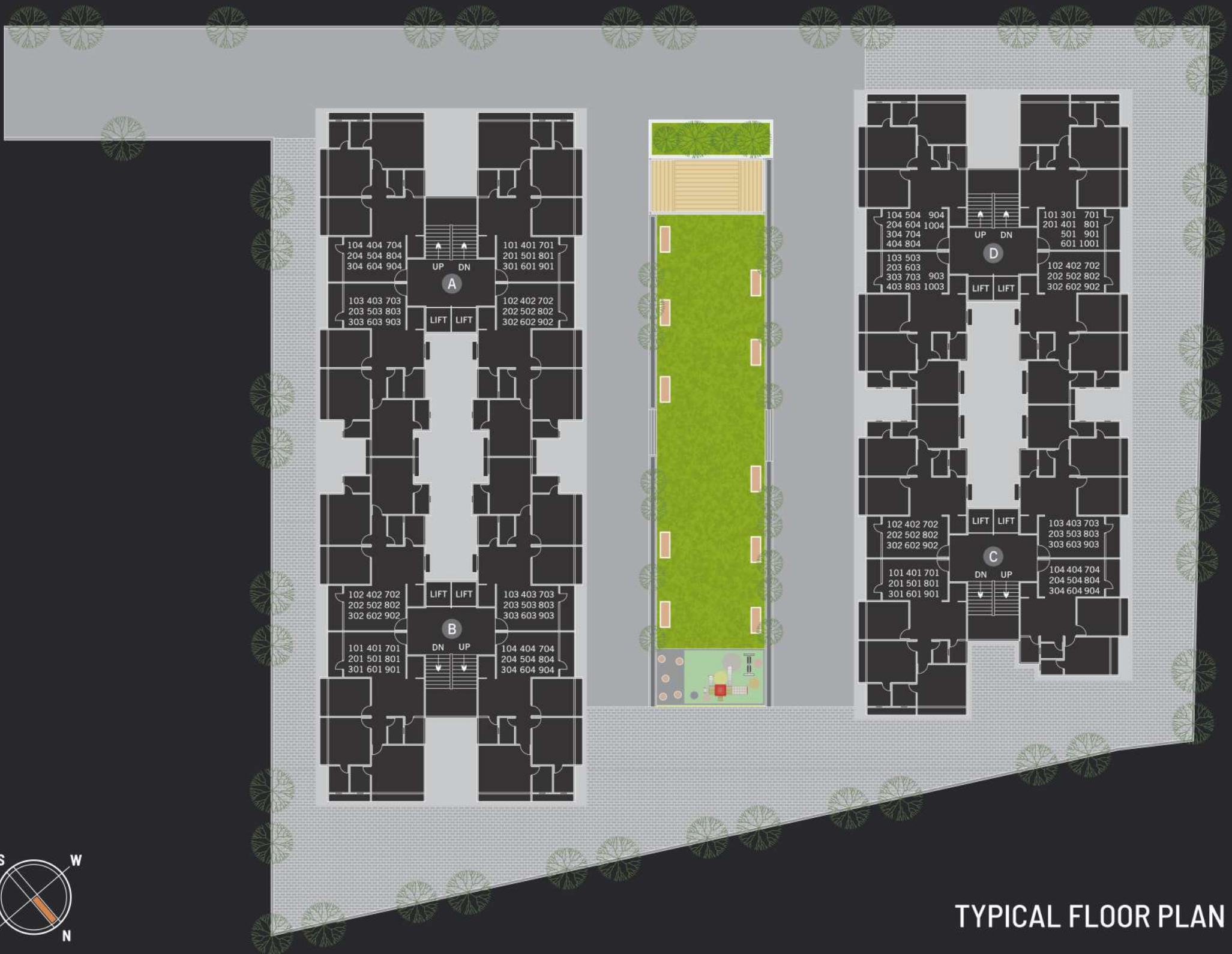




**BASEMENT PLAN**



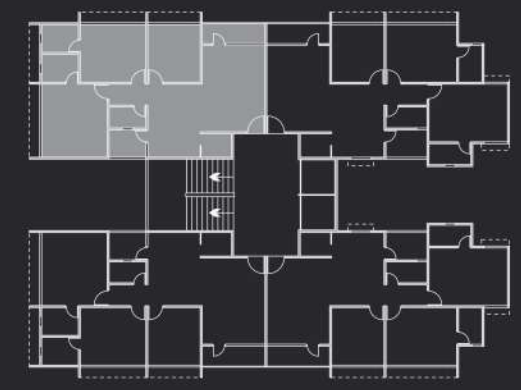
**GROUND FLOOR PLAN**



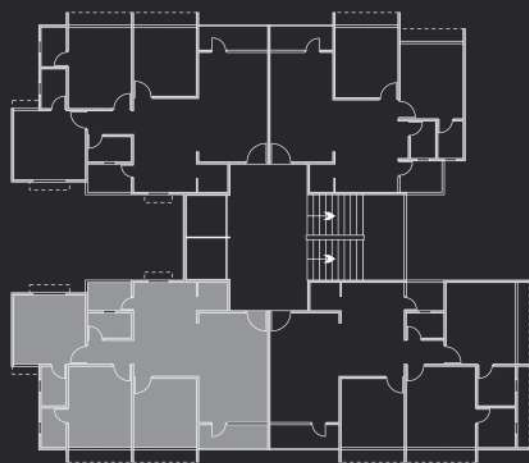
TYPICAL FLOOR PLAN



\*Artistic Image



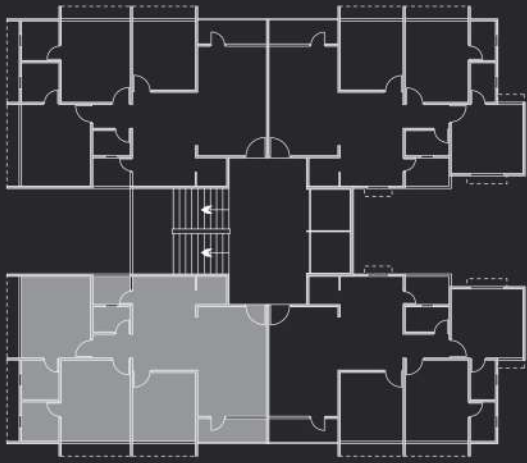
TOWER - A & B  
3 BHK  
UNIT PLAN



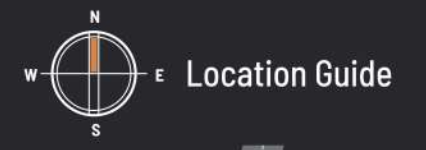
TOWER - C  
3 BHK  
UNIT PLAN







**TOWER - D**  
**3 BHK**  
UNIT PLAN



**Please Note :**

• Changes in elevation shall not be allowed to be done by members of society. • All the government & semi government charges like stamp duty, GST and any tax by state or central government shall be borne by members. • Legal documentation charges, UGVCL, PNG gas connection charges, AUDA Narmada water charges, Advance maintenance shall be borne by the members separately. • All the rights are reserved by developer to make any changes in plan, Number of units, • Exterior elevation, Dimension and other details there in to comply with statutory regulation shall be binding to all the members. • Any additional liabilities due to change in the bylaws. Shall be borne by members. • This brochure is not as legal part of document but only for easy presentation to members. • Subject to Ahmedabad jurisdiction.

Such lush green landscape is nothing less than a blissful nirvana uplifting your mind, body and soul, It inspires absolute peace fullness and joy

OUR SPECIFICATION... 



**FLOORING**

Living / Dining / Bedrooms Vitrified Tiles

**KITCHEN**

Vitrified Tiles Granite Platform with S.S Sink

**BALCONY**

Ceramic / Rustic Tiles

**DOORS**

All Doors will be Flush Doors with Oil Paint

**WINDOWS**

Sliding Aluminum Windows

**TOILETS**

Glazed / Ceramic Tiles up to Lintel Level  
Premium Quality CP Fittings

**ELECTRIFICATION**

Concealed Copper Wiring with Modular Switches  
ELCB / MCB in Each Apartments

**COLOUR**

Internal : Putty Finish, External : Acrylic paint

  
**Shikhar**  
shine



CONTACT DETAILS...



a project by

**SHIKHAR**  
DEVELOPERS



**Shikhar**  
shine

શિક્ષર એવન્યુની પાછળ, સન બંગ્લોઝની સામે,  
સી.એન.જી. પંપની પહેલા,  
ને.હા. નં.-૮, નાના ચિલોડા, અમદાવાદ.  
મો. ૯૮૭૯૪ ૭૫૯૮૮, ૯૮૨૫૨ ૭૩૨૧૨

Architect 

**SHREEM**  
DESIGN

Structure

 **P-CUBE**  
CONSULTANTS

Brochure Design & Concept  
**BHOOMI DESIGN**  
+91 98252 74 775