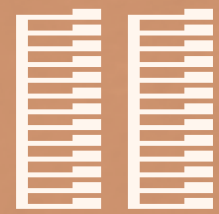


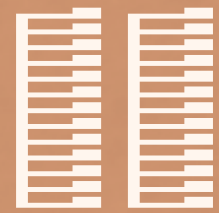


Shubham
HEIGHTS

THE WORLD IS
EVERYTHING THAT MAKES
UP REALITY



02 BLOCKS OF
LIFESTYLE LIVING



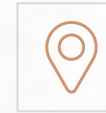
13 FLOOR OF
PRIVATE LUXURY

YOU WISHED FOR

HIGH LIFE AWAITS

SHUBHAM HEIGHTS is a splendid blend of superlative architecture, modern recreational activities and natural beauty - there's something to please the senses and make life flawless.





CAMPUS LOCATED ON
100 FT. WIDE ROAD



TWO LAYERED
CAR PARKING



EACH FLAT ENTRY
EAST-WEST

YOU WISHED FOR

MODERN ARCHITECTURE

The stunning design of this development leaves a lasting impression, breathe in zen-like composure, invigorating water features and captivating landscape.



YOU WISHED FOR
**BLISSFUL
AMBIENCE**

Every corner of this fabulous project is adorned with high-end luxuries and beautiful elements of nature. Living here is an enchanting experience.



WATER FOUNTAIN
PLEASANT SEAT OUT

YOU WISHED FOR
**CHARISMATIC
AMBIENCE**

A stroll around the landscaped pathway, basking in the evergreen surroundings with trickling water feature will surely delight you.



ENTRANCE GATE
CCTV CAMERA SYSTEM





EACH FLAT EITHER
ROAD FACING
OR **GARDEN FACING**



WELL VENTILATED
CAMPUS PLANNING



ROOFTOP
SOLAR SYSTEM

YOU WISHED FOR
SPACIOUS LIVING

These homes are designed with love, dedication and careful attention to detail, ensuring a new, refined and blissful living experience. It doesn't get any bigger better than **SHUBHAM HEIGHTS**.





YOU WISHED FOR
OPEN SPACES



NORTH

TYPICAL FLOOR LAYOUT PLAN

LEGENDS

- 01 ENTRANCE GATE
- 02 PARTY LAWN AREA
- 03 GAZEBO SITTING AREA
- 04 CHILDREN PLAY AREA
- 05 JOGGING TRACK
- 06 PARKING AREA
- 07 BASEMENT PARKING





CUT SECTION VIEW



YOU WISHED FOR **LAVISH** SPACES

A-BUILDING
TYPICAL FLOOR





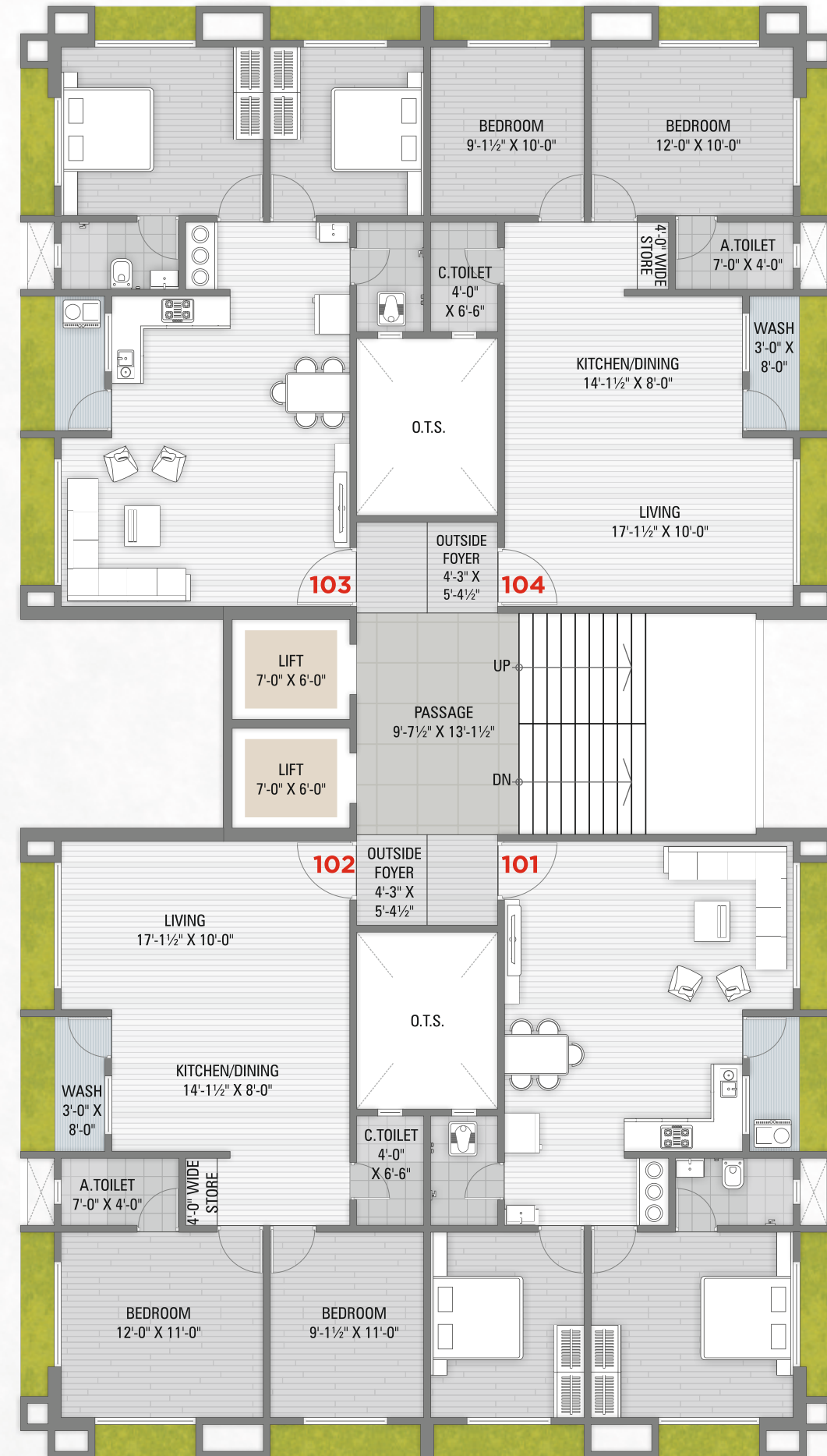
CUT SECTION VIEW



B BUILDING

YOU WISHED FOR SWEET DREAMS

B-BUILDING
TYPICAL FLOOR



NORTH



WELL DESIGNED LANDSCAPE GARDEN
CHILDREN PLAY AREA
GAZEBO FOR OUTDOOR SEATING

YOU WISHED FOR
BLISSFUL AMBIENCE

Listen to nature tell her tale, feel fresh breeze smoothly sail. Take a moment to inhale, let the fragrances just trail. Embrace the exotic greens all around you.



PARTY LAWN



CHILDREN PLAY AREA

UNITS SPECIFICATION

STRUCTURE

- Earthquake resistant R.C.C. frame structure.

FLOORING

- Good quality of vitrified tiles in all rooms.
- Kota stone/Tiles flooring in wash area.

KITCHEN

- Granite platform with good quality sink.
- Decorative tiles dedo up to lintel level above platform.

BATHROOM

- Designer tiles dedo up to lintel level.
- Required sanitary fittings in common & attach toilet.

DOOR & WINDOW

- Designer main door on wooden frame provided with safety lock and fittings.
- Flush doors in all other rooms with oil paint finish.
- Anodized/Powder coated aluminum section window with reflective glass.
- Standard quality marble sill.

WALL FINISH

- Well finished putty on internal plastered wall.
- Texture/Weather shield colour on external wall.

ELECTRIFICATION

- Concealed wiring with ISI wire & modular switches.
- Electric points for washing machine and filter.
- AC point in all bedrooms.

PLUMBING

- Concealed plumbing in bathroom with designer C.P. fittings.
- Central-geyser point in wash area for supply of hot water in each bathroom.

TERRACE

- Waterproofing with china mosaic.

CAMPUS FACILITY

- Well Designed Landscape Garden.
- Gazebo for Outdoor Seating.
- Paved Jogging Track.
- Designated Children Play Area.
- Senior Citizen Sitting.
- Entrance Foyer for Each Building.
- Rain Water Harvesting System.
- Two Layered Parking.
- Power Backup Generator.
- Fire Safety for Campus.
- 2 Nos Auto Door Closing Lifts of Standard Make in Each Wing.
- CCTV Camera in Common Area for Surveillance.
- Automatic ON/OFF System for Common Lighting.
- Rooftop Solar Panel.



ROOFTOP **SOLAR SYSTEM**



LOCATION MAP



EASY CONNECTIVITY

- D Mart - 500 MT.
- SCHOOL - 800 MT.
- OUTER RING ROAD - 1.5 KM.
- RAILWAY STATION - 12.5 KM.
- SURAT DIAMOND BOURSE - 12.5 KM.
- AIRPORT - 14.5 KM.

ARCHITECT & STRUCTURE



Adajan-Surat.
www.bnkassociates.com

SITE ADDRESS

SHUBHAM HEIGHTS,
Ugat Canal Road, Near CNG Pump,
Jahangirabad, Surat.

CONTACT DETAILS

+91 75 75 82 63 63

DISCLAIMER

- All rights for alteration / modification and development in design or specification by architects and/or developer shall be binding to all the members.
- Stamp duty, Registration, GST and any such additional taxes would be charge extra. • Additional charges for legal expenses, DGVCL and Gujarat gas connection. • Maintenance cost / deposit would be charge extra. • Internal & external changes would not be permitted.
- Note : This brochure is for information and artistic view only. It does not form a part of the agreement or any legal document.

A PROJECT BY

