



— THE —

S A G E

BY REPOSE



EMBARK ON A JOURNEY  
OF SELF-DISCOVERY

INVEST. LIVE. REPEAT.

---

MINDFUL LIVING EXPERIENCES





**OPENING UP AVENUES FOR  
THOSE LOOKING TO INVEST AND LIVE AMONGST  
A WELLNESS-CENTRIC COMMUNITY.**

CAMPUS WITH 100 YEAR OLD TREES



STRATEGICALLY PLANNED GREENWAYS



THOUGHTFULLY DESIGNED STREETScape



WELLNESS INFRASTRUCTURE

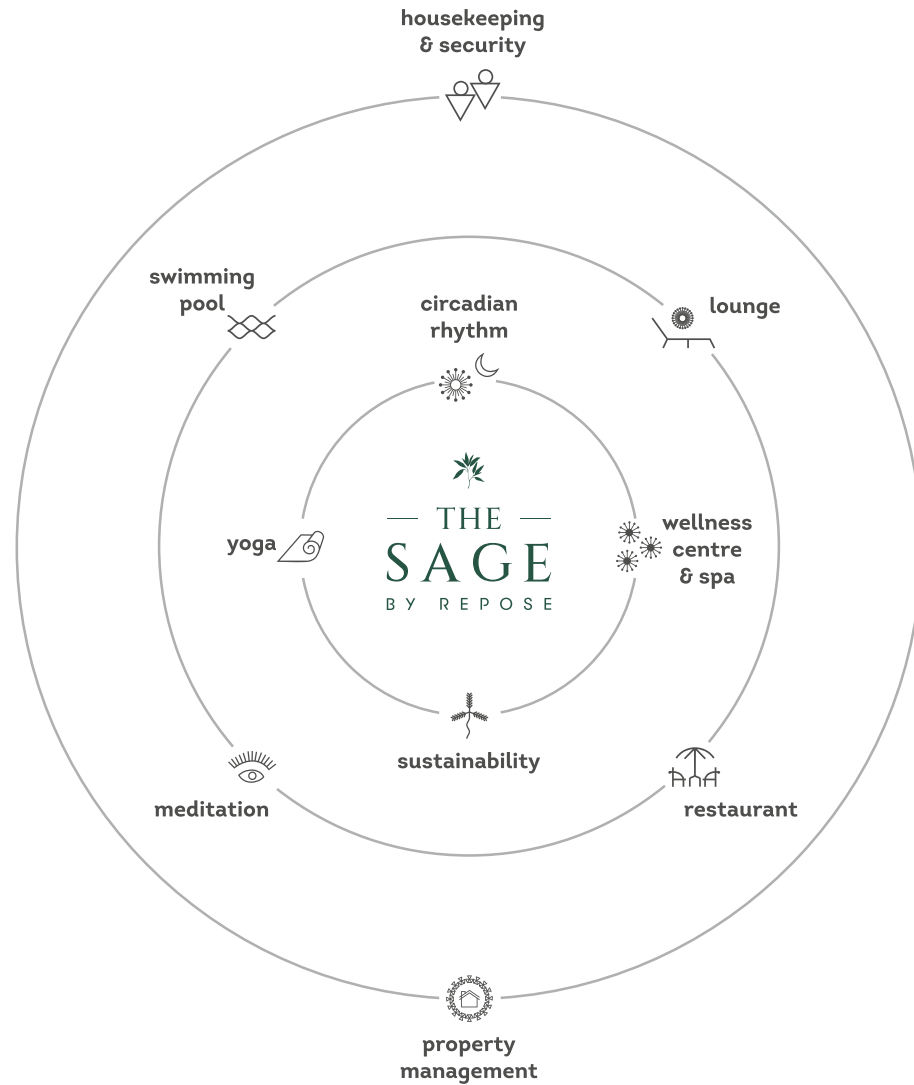


2, 3 & 4 BHK COURTYARD VILLAS

1800 SQ.YD. PLOTS WITH COURTYARD VILLAS @ GREATER THOL, LOHR



# CIRCADIAN RHYTHM - A NEW WAY OF LIVING





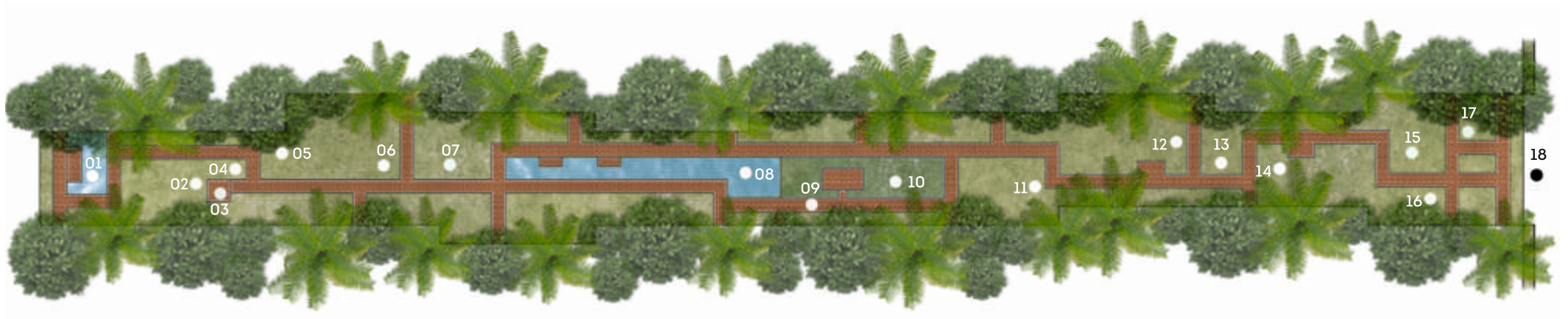


# MASTER PLAN

- 01. ENTRANCE GATE
- 02. WATER FEATURE
- 03. DIAGONAL GREENWAY
- 04. POCKET PLAZA WITH ART INSTALLATION
- 05. VISITOR'S PARKING
- 06. RECREATION LOUNGE
- 07. WELLNESS CLUB
- 08. CLUB PLAZA
- 09. WINDCHIME GARDEN



# TYPICAL GREENWAY



01 RIPPLE POOL

02 HANGING GARDEN

03 YOGA DECK UNDER FRAGRANT TREES

04 MAUVE GARDEN

05 OUTDOOR FITNESS EQUIPMENT NICHE

06 TRELLIS WITH CREEPERS

07 CABANA AMIST BAMBOO GROVE

08 LILLY POOL SIDE SITTING

09 PEDESTRIAN WAY

10 NEIGHBOURHOOD GREEN WAY

11 TOPIARY HEDGE

12 INTERACTION NICHE WITH BENCHES

13 SWINGS

14 OUTDOOR FITNESS EQUIPMENT NICHE

15 YIN - YANG GARDEN

16 REFLEXOLOGY WALK

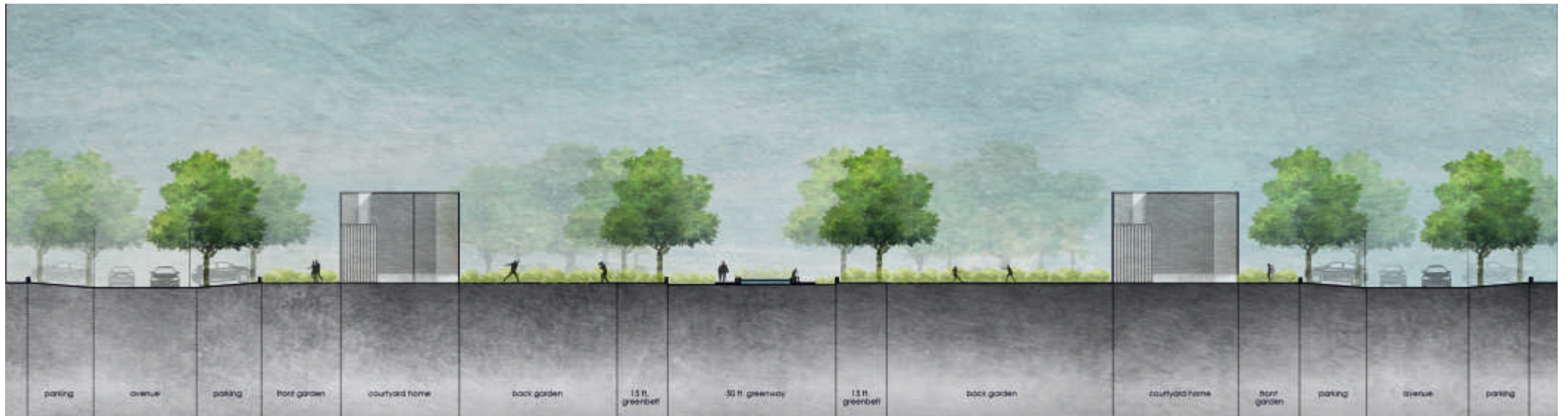
17 FOLIAGE GARDEN

18 CYCLE PARKING WAY

\*AMENITIES IN EACH GARDEN MAY VARY AS PER THE SIZE, DIMENSION & LAYOUT



# STREET COP





























## CAMPUS WITH 100 YEAR OLD TREES

Escape the hustle bustle of city life and embrace the tranquilly at The Sage by Repose, where modern living harmoniously merges with nature's ancient charm.

Our property boasts of trees that have gracefully stood for over a century, providing a living connection to the past and a breath-taking backdrop to your present.

Nestled within this canopy of trees is an enclave of courtyard villas, creating this to be your perfect weekend retreat or a first home;

A sanctuary for those seeking to invest in a home that encapsulates the essence of wellness.



## STRATEGICALLY PLANNED GREENWAYS

True luxury, a signature style of Suryam, is not simply the creation of opulent interiors; it is the culmination of a way of life, that harmoniously integrates with nature.

We'd like to introduce you to our intricately built greenways, a significant element that not only differentiates us from the competition but also turns your daily life into a beautiful symphony of flora, fauna and festivities.

Connected directly to your private gardens are the Greenways, an open expanse that graciously merges with your private gardens to create an extension, magnifying usable garden space.

Large enough to host small gatherings yet closely connected to manage from your villa.













## THOUGHTFULLY DESIGNED STREETScape

At The Sage by Repose,  
streets are not merely pathways; they are carefully crafted experiences.

Picture strolling down a street adorned with a canopy of lush green trees,  
creating a natural archway, meant not only to provide shade but also to infuse the air with freshness.

Our streetscapes are a living testament to the harmonious coexistence of urban living and nature.

Immerse yourself in the beauty of carefully manicured floral streets.

Every season brings a new palette of colours, turning your daily walks into a sensory delight.  
Our landscaping isn't just about aesthetics; it's a celebration of nature's ever-changing artistry.



## WELLNESS INFRASTRUCTURE

Wellness is not just a physical attribute,  
but a feeling of a peaceful mind, spiritual calmness, and physical unwinding.

At the Sage by Repose, each home is curated around empathetic infrastructure  
that ensures care, comfort, and calm inside out.

Vast scapes of green that begin right from your home and merge into the serenity beyond, soothe the eyes  
and bring about a sense of freedom and unruffled balmy for you and your loved ones.

In addition, experienced professional agencies are on call to keep your worries at bay, be it housekeeping,  
villa or garden maintenance or keeping the facilities running smoothly to enhance your journey.

Facilities at The Sage by Repose bring together a community that aspires to  
a wellness-driven lifestyle, ensuring mindful experiences.

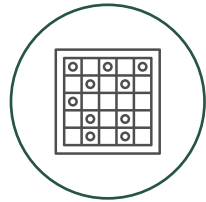
## WELLNESS INFRASTRUCTURE



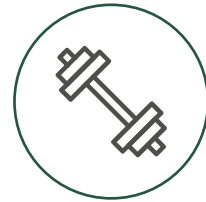
CLUBHOUSE



RESTAURANT



INDOOR  
GAMES



INDOOR  
FITNESS CENTER



OUTDOOR  
FITNESS CENTER



YOGA  
DECK



AQUA  
AEROBICS



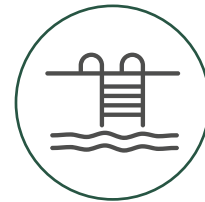
SPA & WELLNESS  
CENTRE



HEALING  
CENTER



INDOOR  
POOL



LEISURE  
POOL



SHOWER  
EXPERIENCE









# MINDFUL LIVING EXPERIENCE

---

## 2, 3 & 4 BHK COURTYARD VILLAS

The grace & elegance of the courtyard villa designs are a testament to classic architecture with contemporary design.

Every residence is a personal haven that skilfully combines the cosiness of personal spaces yet allowing one to savour the elegance of ample space while gently connecting both inside and out.

Your villa is a blank canvas ready to embody you and your family, just as you envision.

Make the untouched beauty into charming spaces, such as an office, a reading nook, or a playroom for children's stories.

A home that moves to the beat of your rhythm, your pace, and your story.





















# LOCATION MAP



SCAN FOR DIRECTIONS





## CORPORATE OFFICE

B101, Shivalik Business Centre, B/h Rajpath Club, Bodakdev, Ahmedabad – 380054

For Information & Assistance:

**+91 79 2970 2249/50, +91 90331 17777**

SCAN FOR  
WEBSITE



## DISCLAIMER

This brochure is only for illustration & private circulation purpose and is not a legal document or a binding one. • The Promoter / Developer reserves the right to make changes in the project, its amenities and specifications as may be suggested by the project architect or the structure consultant and any such changes made shall be binding on the members/customers of the project. • The Promoter / Developer reserves the right to make minor onsite changes during the course of construction and such changes shall be binding on all the members/customers of the project. • The images (Interior and Exterior views) in the brochure are computer simulated graphics for representational purpose and are subject to errors and omissions. The images used may be stock images or images based on architectural plans of the project. They shall not be constructed as actual depictions of the project. • Floor plans are indicative of a typical layout, please refer to exact unit specific layout available separately. • Subject to Ahmedabad Jurisdiction.





SURYAM.IN