



VEDRUSHA  
RESIDENCY

2BHK  
Lavish Living & Shops

Developers:



Site Address:  
Vedrusha Residency, Nr.Satvam International School, Singarwa, Ahmedabad.  
Contact : 91577 09603

design & print by / ischolanandam  
98790 00957 / the print shop





  
**VEDRUSHA**  
 RESIDENCY

2 BHK Lavish Living & Shops



## Happiness is about EMBRACING NATURE

Move to the VEDRUSHA RESIDENCY and spend some quality time with yourself and your loved ones every day. A plethora of amazing lifestyle amenities along with a home overlooking the lush green panoramic view of the garden awaits you.



04



05



ENTRANCE GATE



CCTV



WIDE ENTRY FOYER



COMPOUND WALL

## AMENITIES



24 HOURS WATER SUPPLY



POWER BACKUP



GARDEN



STREET LIGHT



FIRE SAFETY



CHILDREN PLAY AREA



BASEMENT PARKING



COMMON TOILET



SENIOR CITIZEN SIT - OUTS



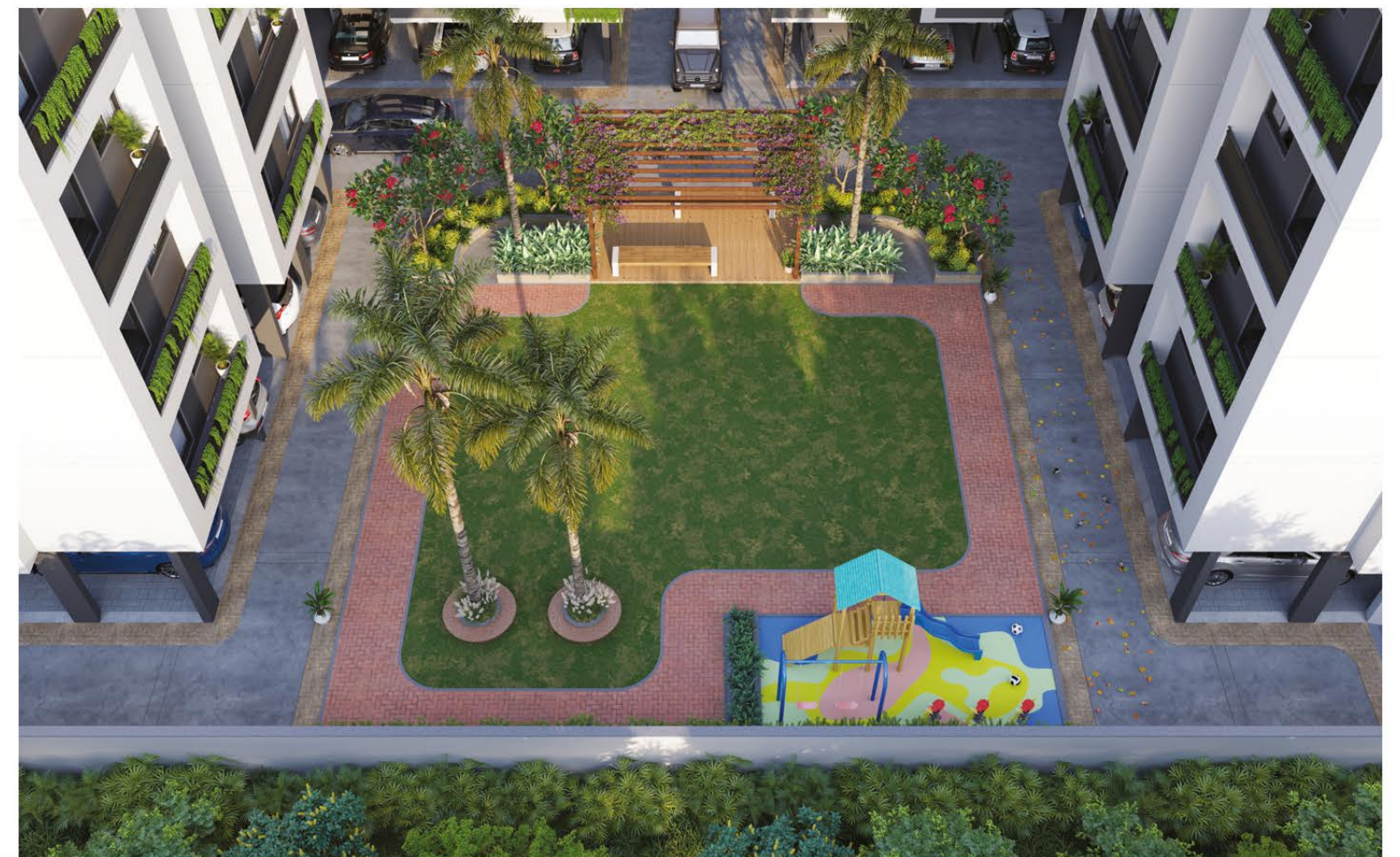
SOLAR PENAL



INDOOR GAMES



AUTOMATIC LIFT IN EACH BLOCK





# GROUND FLOOR PLAN





# TYPICAL FLOOR LAYOUT PLAN





## 2 BHK UNIT PLAN

TYPE - 1 / BLOCK A & B



## 2 BHK UNIT PLAN

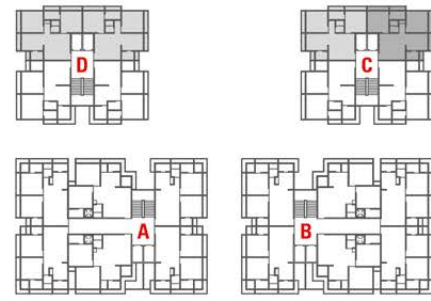
TYPE - 2 / BLOCK A & B





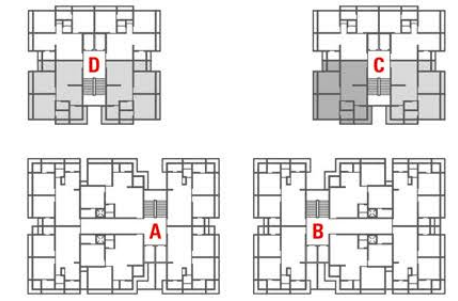
## 2 BHK UNIT PLAN

TYPE - 3 / BLOCK C & D

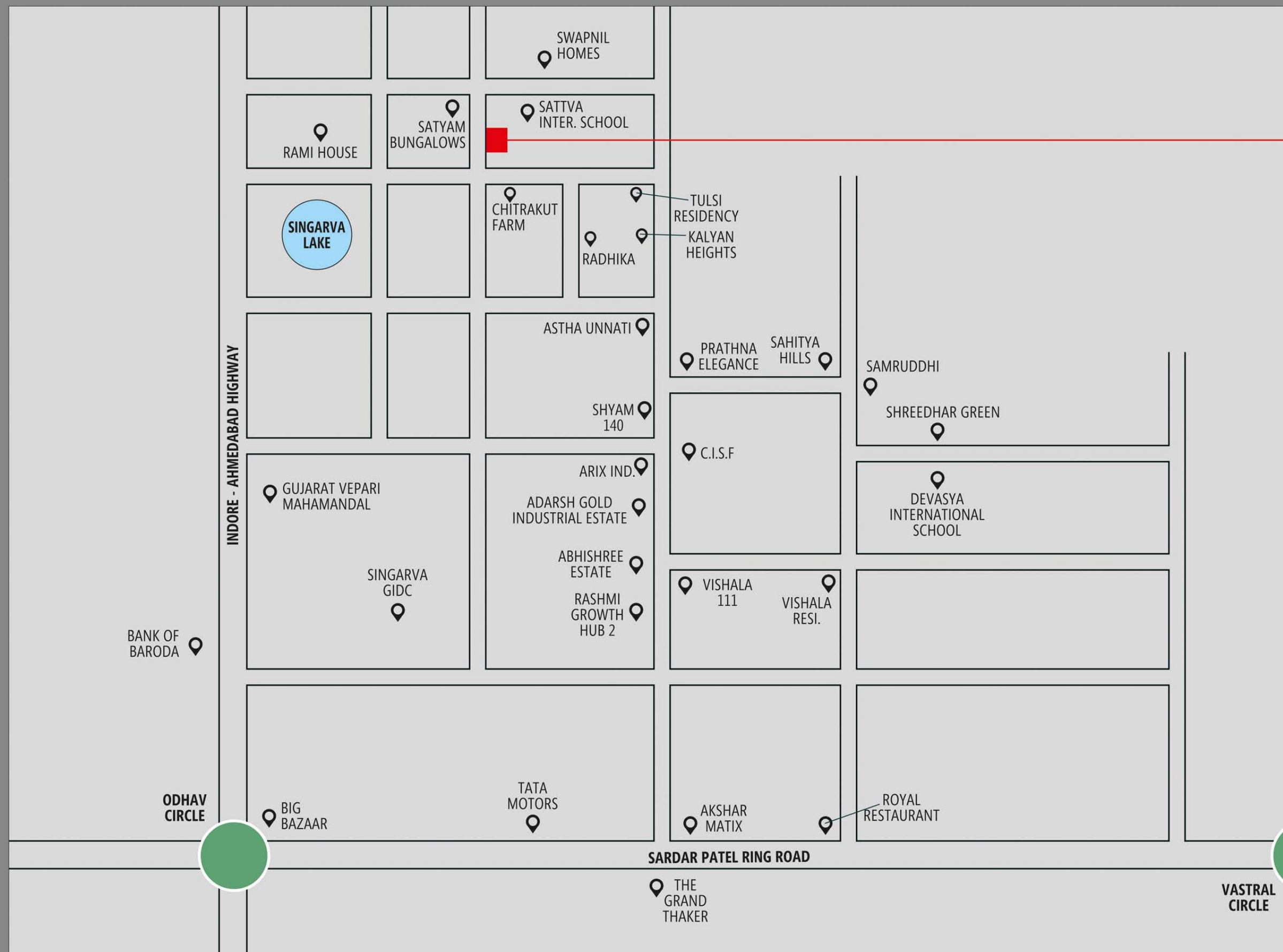



## 2 BHK UNIT PLAN

TYPE - 4 / BLOCK C & D









# VEDRUSHA RESIDENCY

**2BHK Lavish Living & Shops**

Nr. Satvam International School, Singarwa, Ahmedabad.  
**Contact : 91577 09603**

---

NEAR BY LOCATION

01 min Party Plot	10 min Metro
01 min School	15 min Cinema
05 min SP Ring Road	10 min D-Mart
10 min Hospital	05 min Bank

## SPECIFICATION

### STRUCTURE

Earthquake resistant structure design.

### FLOORING

All floor high quality double charge vitrified tiles.

### KITCHEN

Sandwich platform with granite top.  
Wall tiles up to beam bottom level.

### DOOR

Decorative main door  
Internal door - flush door with wooden / granite frame.

### WINDOW

Anodized aluminum section with Granite / wooden frame and reflective glass.

### TOILET / PLUMBING

Elegantly designed toilets with designer tiles up to lintel level and Premium quality sanitary wares & cp fittings in all toilets.

### ELECTRIFICATION

ISI copper wiring with Standard accessories.

### WALLS

Internal walls will be finished with putty over mala plaster.  
All external wall will be finished with double coat Sand face plaster with premium quality paint.

DEVELOPER



ARCHITECT



STRUCTURE



RERA NO : PR/GJ/AHMEDABAD/DASKROI/Ahmedabad Municipal Corporation/MAA13397/250424/311227 | Website : gujrera.gujarat.gov.in

### NOTES:

• This brochure is not as legal part of document but only for easy understanding to customer • Irregular payment cause for cancellation of the booking • All rights are reserved by developers to make any changes in plan, scheme elevation, dimension and other details there in to comply with statutory regulation shall be binding to all the members • Room dimensions mentioned are masonry dimensions that exclude plaster and tile thickness • Subject to Ahmedabad Jurisdiction.