

SAI
parisar
the art of opulent living



Elevating Lifestyle

2 & 3 BHK LUXURIOUS APARTMENTS

Indulge



IN A PREMIUM LIFESTYLE

Each home at Sai Parisar is an engrossing living space designed to provide every conceivable luxury and spellbinding views. Parisar by trees from all directions, it spoils you with its fully-loaded features.



CCTV Surveillance



Security Cabin



Pick Up Zone





Belong TO A BIGGER LEAGUE

One of the finest locations of Mota Chiloda, Gandhinagar, Sai Parisar is synonymous with urban elegance and is all set to become one of the most sought-after residential areas of Mota Chiloda. It offers you easy accessibility to the finest restaurants, schools, educational institutions, healthcare facilities, apart from a friendly neighbourhood.



**Lifestyle
Amenities**



BEAUTIFUL GARDEN



CHILDREN PLAY AREA



WALKING TRACK



SEATING AREA



GYMNASIUM SPACE



ELECTRIC METER ROOM



INDOOR GAMES ZONE



PNG GAS CONNECTION



DESIGNER SOLAR STREET LIGHT



INTERNAL RCC ROAD



RAIN HARVESTING SYSTEM



GAZEBO



ENTRANCE FOYER



COMMON PLOT



ELEGANT CLUB HOUSE



ALLOTTED PARKING



WATER SOFTNER



HIGH SPEED AUTOMATIC ELEVATORS



VIDEO DOOR PHONE SYSTEM



GUEST PARKING SPACE



POWER BACKUP (For Common Area)



COMMON BORE WELL







Cherish AMENITIES THAT
MAKE LIFE EASIER

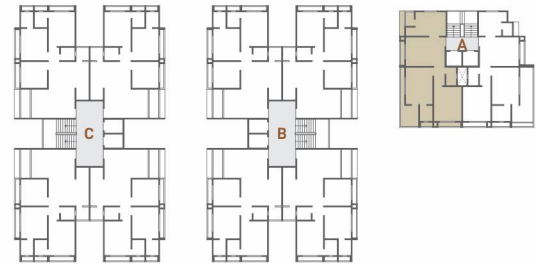


N
E
W
S
TYPICAL FLOOR

24.00 MT. WIDE T.P. ROAD



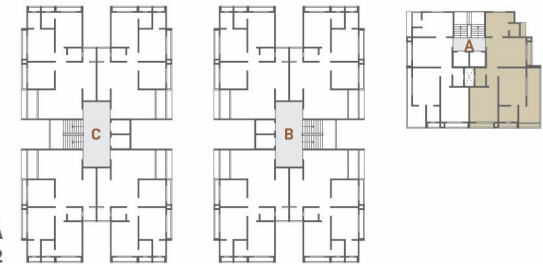
BLOCK - A
UNIT NO : 101 TO 701



2 BHK
UNIT PLAN



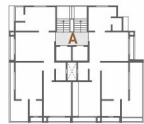
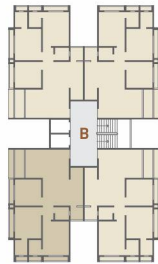
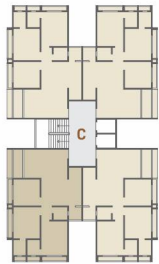
TYPE B



3 BHK
UNIT PLAN



TYPE C



BLOCK - B & C
UNIT NO:
101 TO 701, 102 TO 702,
103 TO 703 & 104 TO 704



Revitalize



AMID THE GOODNESS OF NATURE

Work out or chill out. Dive in or dream away. Walk, jog or sit still. Make new friends or get lost in a book, a game or just on the smell of fresh earth. Sai Parisar is everything you dream of and more.





BASEMENT
FLOOR

SPECIFICATIONS

- STRUCTURE**
 Earthquake resistant, R.C.C frame structure with brick masonry wall.
- WALL FINISH**
 Internal single coat mala plaster with wall putty & External double coat sand faced plaster with acrylic paint.
- FLOORING**
 Good quality vitrified tiles in entire apartment. Wooden flooring in Master bedroom. Mat finish tiles in wash area.
- DOOR & WINDOW**
 Decorative main door, all other door will be flush door in enamel paint. Aluminum door in toilet. Fully glazed powder coated Aluminum section sliding windows with natural stone sill.
- KITCHEN**
 Platform with granite, having S.S sink with designer Glazed tiles dado up to slab level. Chimney & R.O Plant & Gas pipe line.
- TOILET & PLUMBING**
 Glazed tiles dado up to lintel level & flooring concealed plumbing with C. PVC & U. PVC pipe, Good Quality sanitary ware & C.P Fitting. Shower panel in Attached toilet.
- ELECTRIFICATION**
 Single phase concealed copper wiring with good quality accessories with sufficient electric points. Geyser point in attached toilet. A.C point in master bedroom.
- TERRACE**
 Open terrace to be finished with china mosaic for heat reflection & water proofing.

STEEL



BRANDS WE USE (OR EQUIVALENT)

BATHROOM



CEMENT



ELECTRIC



SWITCHES



FLOORING



ELEVATORS



PLUMBING



WINDOWS



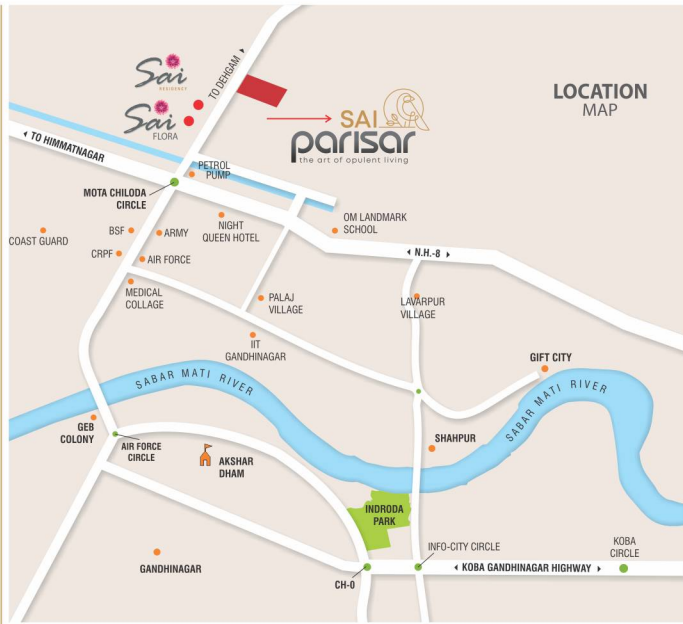
INSIDE PUTTY



GLASS



Please Note : • Stamp Duty, Registration Charges, Legal Documentation Charges, Advance Maintenance, Fix Maintenance Charges, GMC Charges and Electrical Co. Charges including cable and sub-station cost shall be borne by the purchaser. • Any additional charges, taxes, cess or duties levied by the government / local authorities prior, during or after the completion of the scheme will be borne by the purchaser. • Changes / Alteration of any nature, including the elevations, exterior colour scheme of the apartments or any other change affecting the overall design concept and outlook of the scheme are strictly not permitted during or after the completion of the scheme. • All elements, objects, treatments, materials, equipments and colour schemes shown are artist's impressions. Actual may be different as per architect's designs. • All dimensions shown here are unfinished to unfinished wall. • The brochure is intended only to convey the essential design and technical features of the scheme.



DEVELOPER



ARCHITECT



Site : Sai Parisar, FP No - 67/1, 67/3 B, Opp. Poonam Bungalows,
Mota Chiloda, Gandhinagar - 382355.

For More Information : +91 97230 81408

RERA REG. NO.:

WEBSITE : www.gujrera.gujarat.gov.in