



**SAMARA** *gold*

---

21<sup>ST</sup> CENTURY LIFESTYLE

---

PLOTS / ROW HOUSE / APARTMENTS

# 21<sup>ST</sup> CENTURY LIFESTYLE

## Redefining Art of Living

Your home is something that you wait for years.. something that you cherish for lifetime... something that reflects you... and something that you can never compromise upon! Which is why, this dream home of yours at "Samara Gold", which more often than not is a once in a lifetime investment, is envisioned with ultimate care.

Samara Gold, a project by Samara Group is a well-researched, meticulously planned and immaculately designed by the best of professional minds makes it as precious as GOLD.

**SAMARA**gold  
BUILDING TRUST, DELIVERING DREAMS..



**Electric Vehicle  
Fast Charging Station**

**Power Backup  
With Solar Power System  
in common areas**



**Clean India Green India  
With Garbage Chute System**

**Secure Campus with  
Electronic Security System**



**Spacious  
Multi Floor Parking**







Our SURROUNDINGS,  
Carry a REFLECTION  
of How we LIVE &  
How we WANT to  
**LIVE!**





*A***LIFE WELL SPENT IN  
THE COMPANY  
OF LIKE-MINDED PEOPLE**

**IN THE COMPANY OF  
NATURAL GREENS**

Large landscaped open spaces with lush eco-system, tree-lined avenues and green spaces on either side of the roads.

**INFRASTRUCTURE, NO LESS  
THAN THE BEST**

Carefully planned infrastructure with well-designed roads, environment friendly initiatives, STPs, 24 hrs power backup in common area and rain water harvesting for hassle-free living.

**ALL COMFORTS WITHIN  
REACH**

Samara Gold is in close vicinity to social infrastructure like schools, nursing homes, clinics, cafés, retail & commercial zone.

**IMMACULATE DESIGN  
AND PLANNING**

The township has magnificent space planning, finest amenities and flawless execution that befit the lifestyle of the upper echelons.





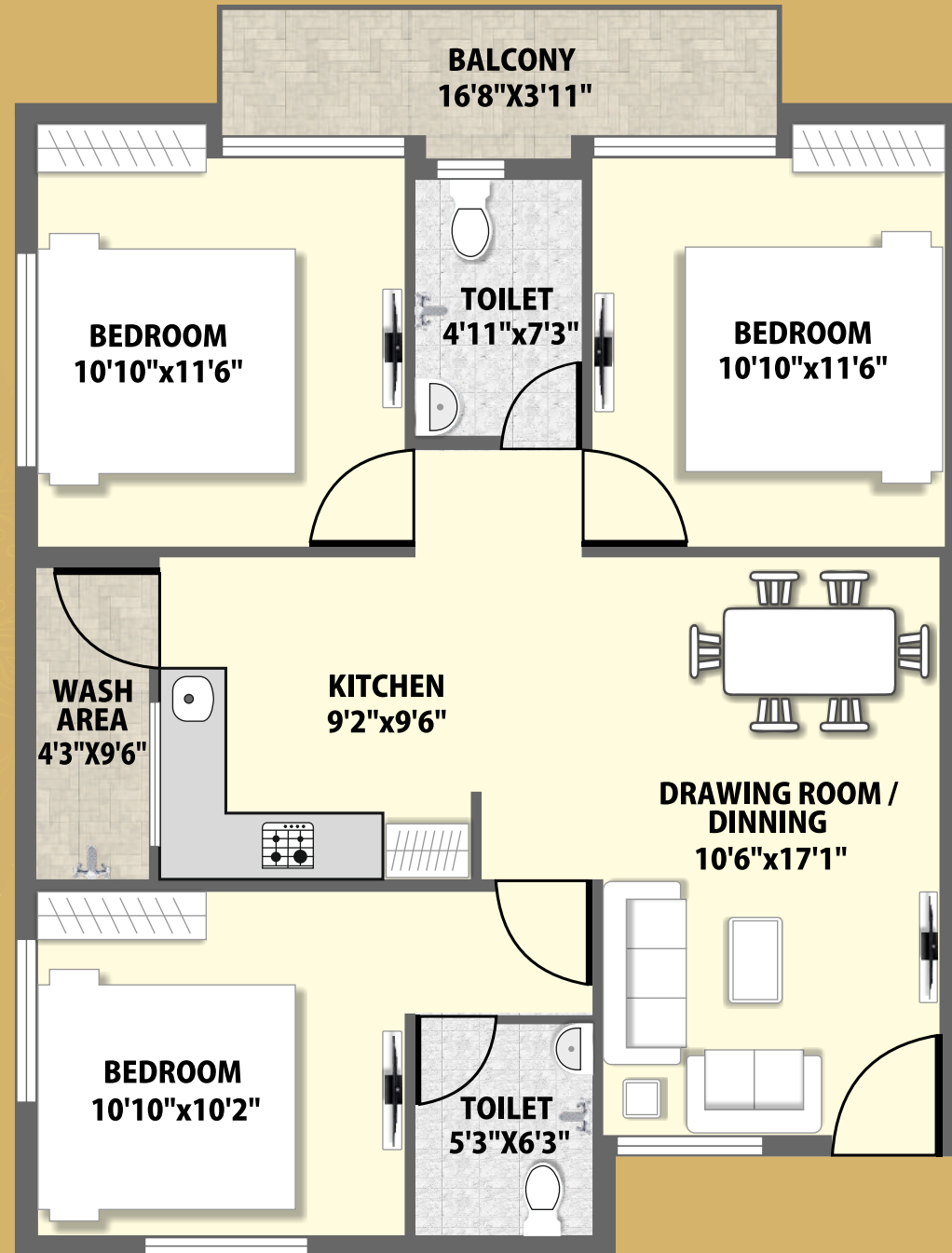
# Unit Plan

**3BHK - ULTRA**

**Built-up Area  
980 Sqft**

**Super Built-up Area  
1313 Sqft**

Its never too Late  
for a **New**  
**BEGINNING**  
in Your **LIFE**





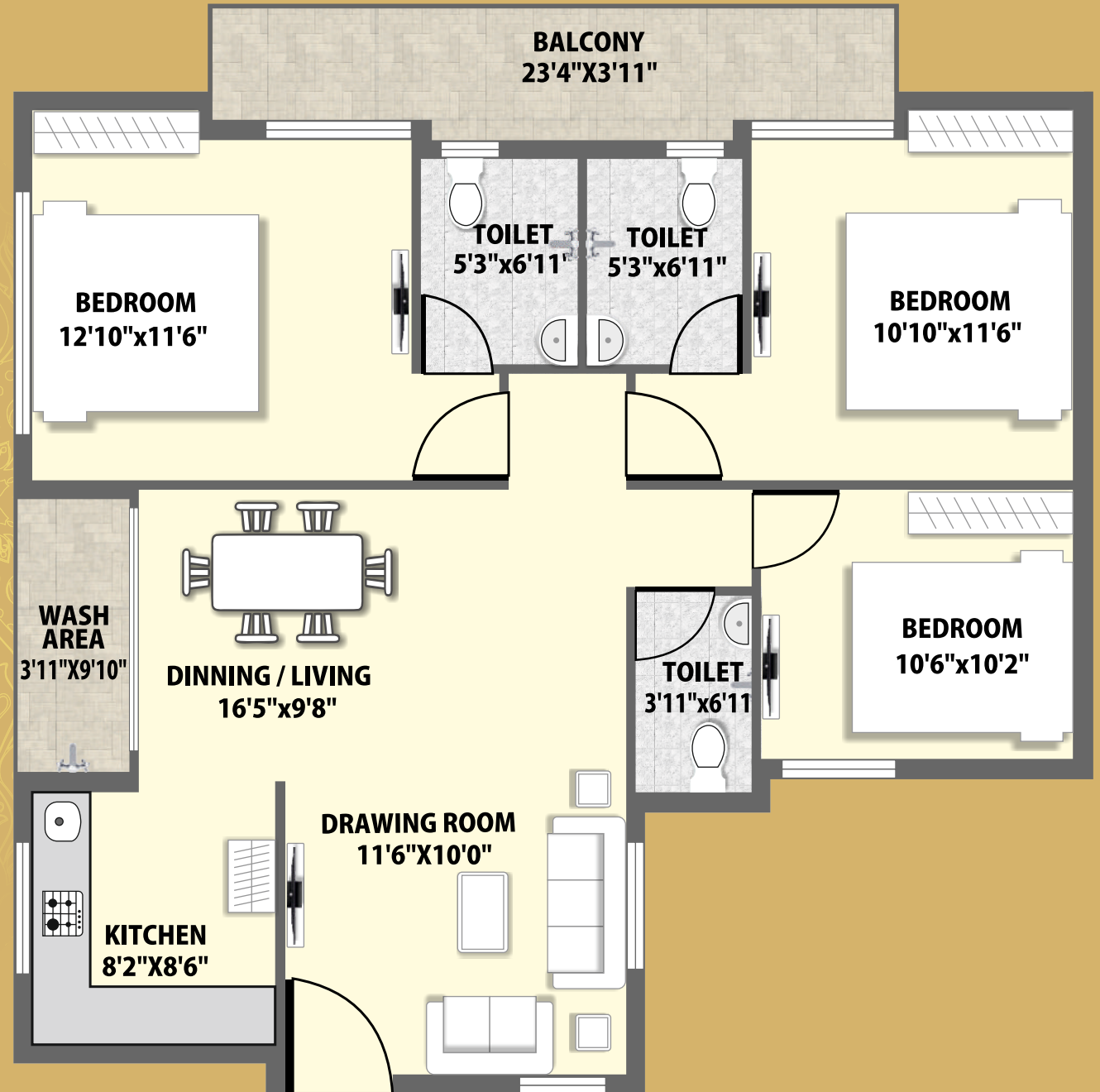
# Unit Plan

**3BHK - SUPER**

**Built-up Area  
1126 Sqft**

**Super Built-up Area  
1516 Sqft**

You gotta **JUMP** to be  
the **BEST**  
Version of You





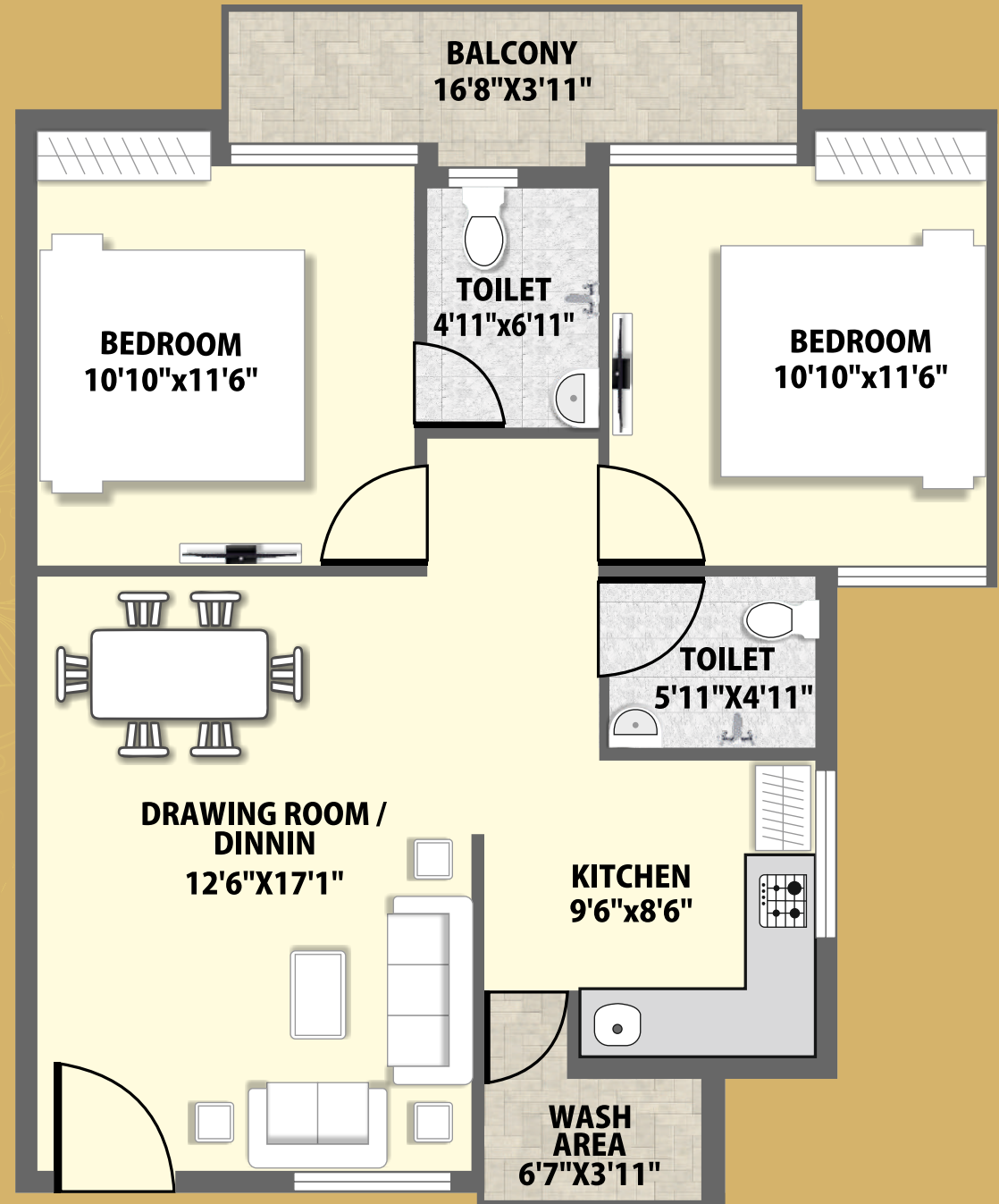
# Unit Plan

2BHK

Built-up Area  
830 Sqft

Super Built-up Area  
1163 Sqft

Be **Happy** with  
what You have.  
Be **EXCITED**  
**about** what  
**you want**



# Specification



## **STRUCTURE**

Earthquake resistant RCC framed structure.  
Structural design confirming to IS design codes.

## **FLOORING**

Well recognised premium range vitrified tiles certified by ISO 9001:14000.

## **KITCHEN**

Well recognised premium range vitrified tiles certified by ISO 9001:14000.  
Designer dado tiles 600mm height.  
Granite kitchen top with SS sink & drain board.

## **BATHROOM**

Anti - skid tile flooring.  
Dado tiles upto lintel level.  
High repute branded bathroom fittings & sanitary ware.

## **WINDOW**

Powder - coated aluminium 3-track sliding glass window with mosquito net..

## **DOORS**

Panel shutter doors with laminated finish.  
Main door along with magic eye & safety lock.  
Doors fitted with premium quality SS hardware fittings.

## **BALCONY**

Anti - skid tile flooring in balcony.

## **ELECTRIC WORK**

Branded modular electrical fittings & circuit security MCB's.  
3-phase concealed & fire resistant wiring of ISI copper wire.  
Provision for TV / USB / Fiber.  
Provision for sufficient (15A & 5A) power point for AC, microwave, fridge, etc.

## **WALL FINISH**

Internal walls - plastic emulsion paint.  
External walls - weather shield paint of standard make.



# Highlights



- Located in posh location of Salaiya, Bhopal within a fully inhabited locality.
- Proposed Metro Station in immediate neighbourhood.
- Unmatched locational advantages with all utility points, top end schools, hospitals, banks and Shopping Malls in close vicinity.
- Excellent construction quality with modern & exclusive life style amenities within a fully secured campus.
- Designed by renowned architect Manoj Mishra and associates.
- EVS (Electric vehicle charging Station and solar electricity).
- 24/7 advanced security systems.
- Vastu and Eco-friendly project layout and Professionally designed landscaping all over the campus.
- Club house offering a host of services including Swimming pool, gymnasium, table tennis, billiards, Jacuzzi, yoga hall & lobby for visiting guests.
- Children play areas with modern play equipment's.
- Lush green exotic landscaped garden with fountain.
- Enchanting fountains in the midst of flower bed.
- Designer street lights within the complex.
- Elegant Main Gate & Exclusive Front Elevation.
- Temple & Jogging Track for Senior Citizens & for all age Groups.
- 100% Power backup of utility areas.
- Ample Parking Space.
- STP of adequate capacity.







Club  
Gold



I am in **Charge** of  
how I **FEEL** and  
today I am **Choosing**  
**HAPPINESS**









Life is full of  
Surprises you  
don't know what  
will happen so  
**ENJOY** and  
be ready for  
**SURPRISES**





Let **TODAY** be  
the **Start**  
of something  
**NEW**





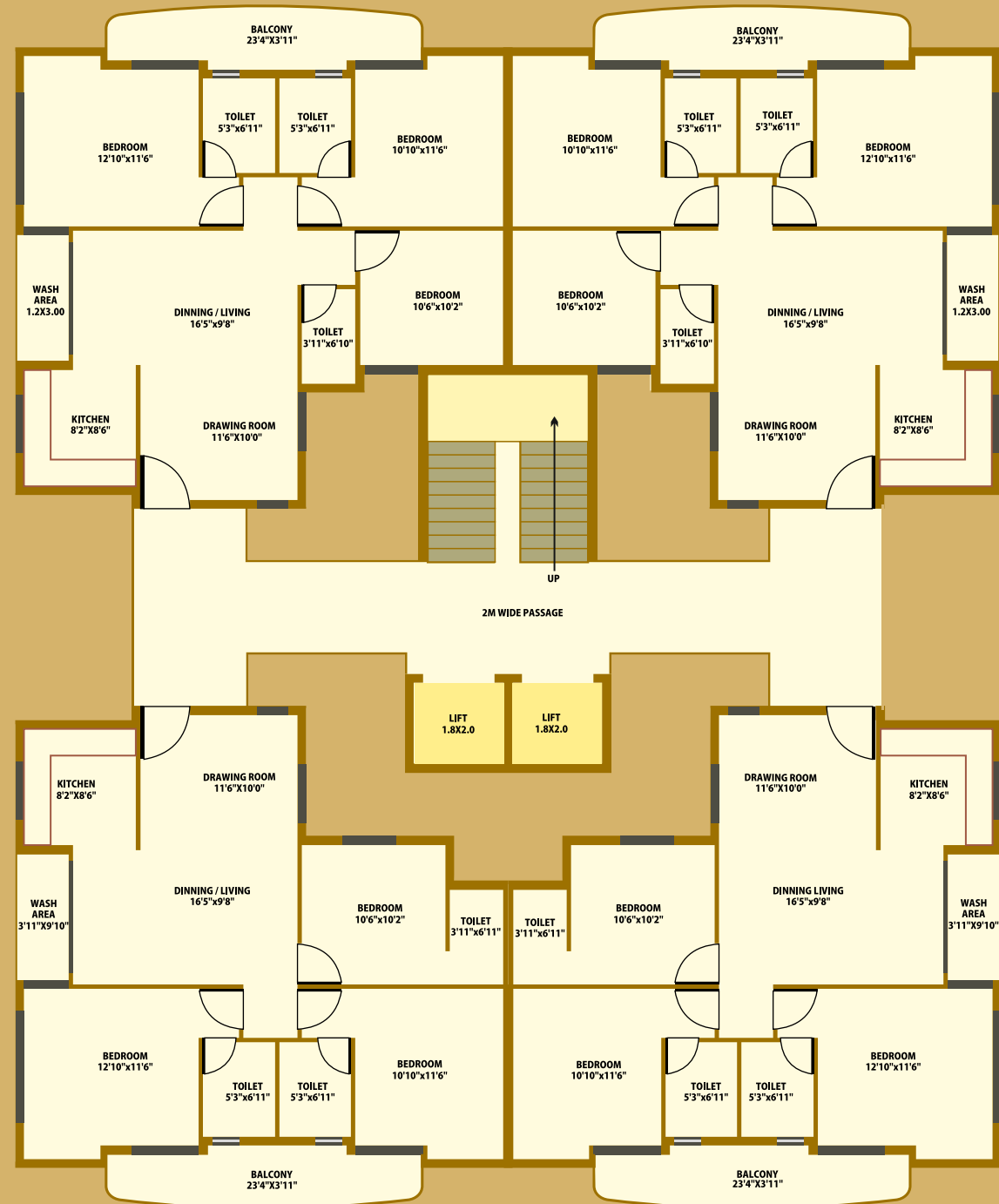
Miracles **Happens**  
in life, When **your**  
**efforts** are in the  
**Right Direction**





# BUILDING Layout Plan

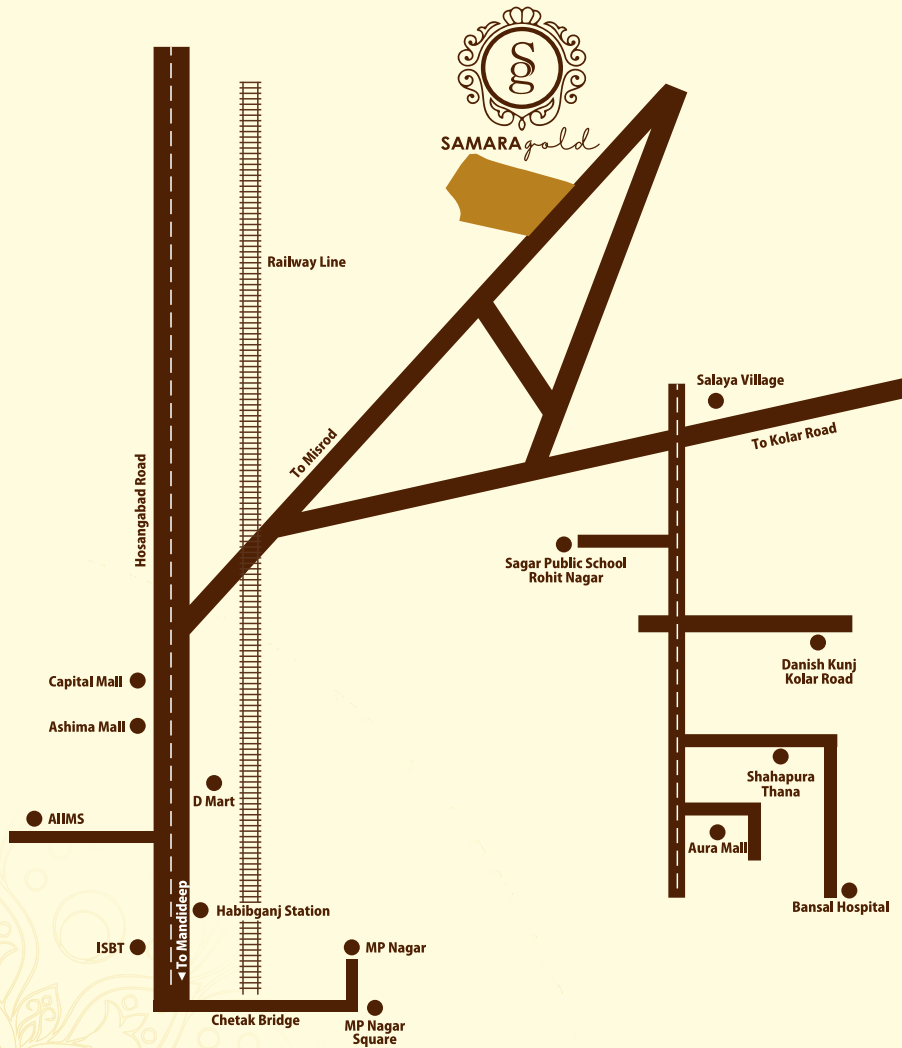
Today is your  
Opportunity to  
build the  
Tomorrow  
you want







# Location Plan



**SAMARA gold**

21<sup>ST</sup> CENTURY LIFESTYLE

Corporate Office: C - 220, C Sector, Shahpura. Near Bansal Hospital, Bhopal, Madhya Pradesh. 462016

**Booking Call:**

Phone Number: +91-9009018100 Email: [contact@samaragroup.co.in](mailto:contact@samaragroup.co.in)  
Website: [www.samaragroup.co.in](http://www.samaragroup.co.in)

Disclaimer: This brochure is conceptual and not a legal offer and gives on a bird eye view of the project. The content in this brochure, including the plans, elevation, images, floor plans, location detail, area, design, layout, specifications and payment plans etc. are indicative in nature and subject to variations and modifications at the sole discretion to the competent statutory authorities or the company. The project is developed by Samara Buildcon LLP, a flag ship company of Samara Group,