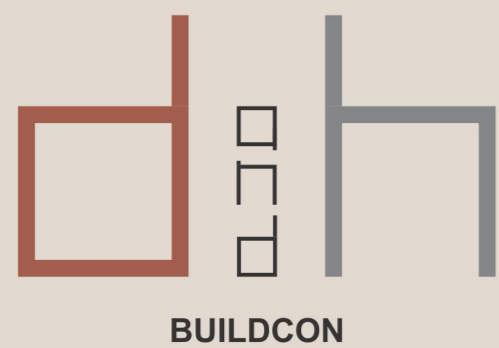


## PREMIUM PALATIAL PARADISE



Home defines your life  
just as much as your accomplishments.  
We believe in making life grand,  
pushing past the ordinary &  
embracing a lifestyle of expansive living.

---

A woman with long dark hair, wearing a white long-sleeved shirt, is shown in profile from the chest up. She is holding a white mug with both hands and looking out a window. The background is a bright, slightly blurred cityscape with buildings and a railing. The overall tone is soft and aspirational.

# AADISH PRIME

**3 BHK**  
Premium Spacious Apartments  
& Showrooms





# Thrive in The *Heart* of *Ahmedabad*

Where  
Everything is  
Nearby.

@Nava Vadaj



RANIP METRO STATION  
VADAJ METRO STATION  
NARENDRA MODI STADIUM  
AHMEDABAD AIRPORT  
RAILWAY STATION  
RTO AHMEDABAD  
EDUCATIONAL INSTITUTES  
FINEST CLUBS

RIVERFRONT  
SABARMATI AASHRAM  
MULTI. SP. HOSPITALS  
CAFÉ & RESTAURANT  
SPORTS ACADEMIES  
PREMIUM HOTELS  
MALLS & CINEMAS





A haven of peace & opulence.  
Immerse yourself in the spacious,  
meticulously designed homes.  
A lifestyle of unparalleled  
comfort & convenience.

13 FLOORS

1 TOWER

Exclusive for

**50**  
Families

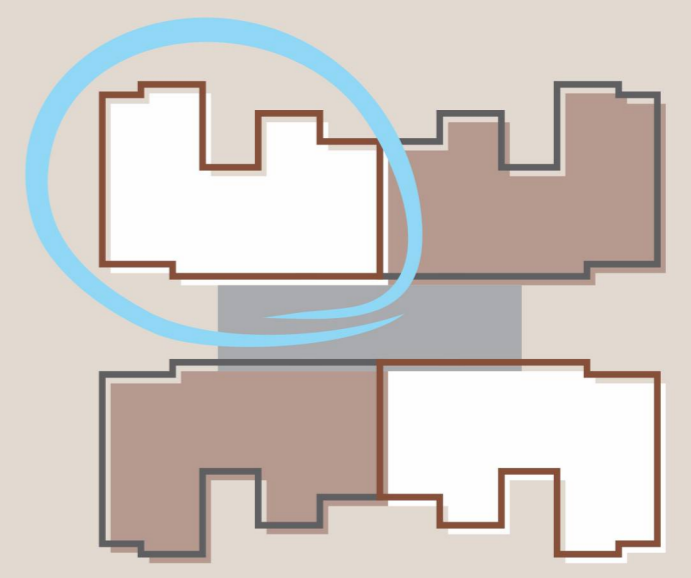






## *Minimal Masterpiece*

Embrace serene living in a beautifully designed tower, where expansive balconies & open-air planning create a tranquil & airy home environment.

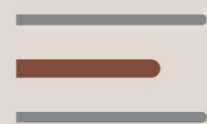


**3** SIDE OPEN &  
HUGE BALCONY





## *Prime Position, Maximum Convenience*



Located at the heart of everything you need,  
with dual corner road access &  
close proximity to everyday essentials,  
this is where life thrives.



Premium Road Facing  
Showrooms



Separate Residential  
Ground Floor Entry/ Exit



2 Road Corner



Retail / Visitor parking





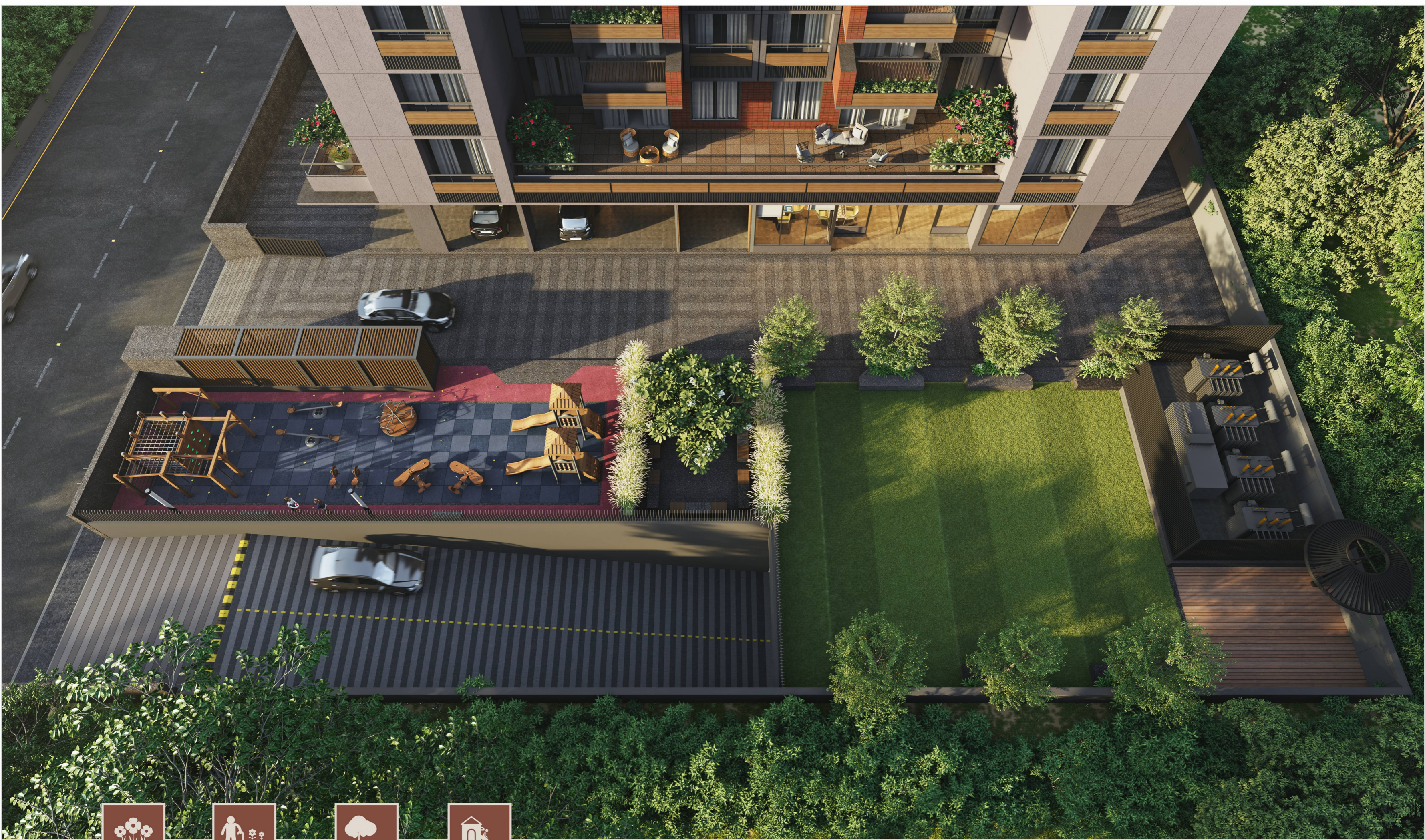
## *Ease & Comfort Combined*

Experience ultimate convenience with separate parking for residents & guests, alongside easy access to retail showrooms. Comfort meets ease with dedicated residential basement parking.



Sufficient Parking





Immerse yourself in the serene embrace of a central landscape garden, thoughtfully designed to cater to individuals of all ages.



*An Intimate Green Haven*





## *Cozy Garden Getaway*

A picturesque central landscape garden.  
A tranquil sit-out nestled amidst the serene surroundings,  
A sanctuary of peace, where one finds solace and profound grounding.





  
Entrance Foyer

  
Banquet Hall

  
Security Cabin

  
Garbage Bank

  
Children Play Area

  
Pick Up / Drop Off Zone


  
Gymnasium

  
Bird Feeder

  
Indoor Games

  
Event Lawn

  
Senior Citizen Sit Outs

  
Meter Room & Sub Station / Dg Set

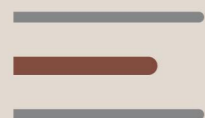


# Crafted Spaces for Everyone

Exquisitely crafted spaces for every age group, offering serene seating for relaxation & vibrant play areas for children, creating an environment that delights everyone.







## *Grand Entrance Lobby*

Experience the 'wow' factor from the moment you enter, with a grand entrance lobby that exudes luxury and elegance, setting the tone for an extraordinary welcome.





Step into a haven of luxury living, where spacious and airy living-dining areas create the perfect environment for a refined and comfortable lifestyle.



*Luxury Living, Exclusive Enclave.*





### Ground Floor Plan

#### AMENITIES

- |   |                             |                        |
|---|-----------------------------|------------------------|
| 1. RESIDENTIAL ENTRY                    | 7. RETAIL / VISITOR PARKING | 14. CHILDREN PLAY AREA |
| 2. SECURITY CABIN                       | 8. GARBAGE BANK             | 15. ENTRANCE FOYER     |
| 3. PICK UP / DROP OFF ZONE              | 9. SUB STATION / DG SET     | 16. GYMNASIUM          |
| 4. RESIDENTIAL BASEMENT ENTRY/EXIT RAMP | 10. METER ROOM              | 17. INDOOR GAMES       |
| 5. RETAIL ENTRY                         | 11. HOLLOW PLINTH PARKING   | 18. BANQUET HALL       |
| 6. RETAIL PROMENADE                     | 12. EVENT LAWN              | 19. BIRD FEEDER        |
|   | 13. SENIOR CITIZEN SIT OUTS | 20. RESIDENTIAL EXIT   |



### First Floor Plan







Second Floor Plan



Typical Floor Plan







**Typical Unit Plan**







# Specifications

## STRUCTURE



- RCC STRUCTURE IS FOR EARTHQUAKE RESISTANCE
- WALLS WITH CEMENT BLOCK

## WALL FINISH



- EXTERNAL DOUBLE COAT MALA PLASTER WITH TEXTURE PAINT
- INTERNAL SINGLE COAT MALA PLASTER WITH PUTTY FINISH

## FLOORING



- VITRIFIED TILES FLOORING IN SHOPS AND PASSAGE
- STONE FINISHED FLOORING IN STAIRCASE

## WINDOWS



- WINDOW SILL POLISHED STONE OR GRANITE
- WINDOW ALUMINUM ANODIZED / POWDER COATED SECTIONS

## TOILETS



- VITRIFIED/ CERAMIC/ GLAZED TILES FLOORING AND DADO
- GRANITE/ COMPOSITE MARBLE BASIN COUNTERS AND WASH BASINS

## PLUMBING WORK



- CPVS/ UPVC WATER SUPPLY PIPES & PVC PIPES FOR SOIL, WASTE & DRAINAGE SYSTEM
- PLUMBING FITTINGS - JAGUAR OR EQUIVALENT
- SANITARY WARE - CERA OR EQUIVALENT

## ELECTRIFICATION



- 3 PHASE, CONCEALED COPPER WIRING WITH ADEQUATE NUMBERS OF POINT & MCB+ELCB PROTECTION
- BRANDED MODULAR SWITCHES

## LIFT



- BRANDED PASSENGER LIFT





AADISH  
PRIME



Scan for Location

Opp. Arjun Complex, Saurabh School Rd, Mansukh Nagar, Nava Vadaj, Ahmedabad 380013

**D&H BUILDCON**

702 Viva Atelier, Ketan Society,  
Opp. B D Patel House Naranpura, Ahmedabad-380014

+91 93 77 55 43 43

dhbuildcon.com info@dhbuildcon.com

Architect :

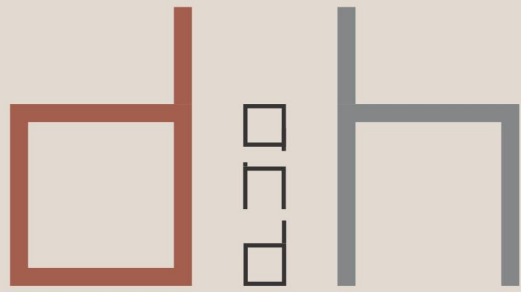
**mansi shah**  
ARCHITECTS

Structural Eng. :

**Blue Skyz**  
Engineers

RERA NO.  
PR/GJ/AHMEDABAD/AHMEDABAD CITY/Ahmedabad Municipal Corporation/MAA13814/080724/300927 www.gujrera.gujarat.gov.in





**BUILDCON**

[dhbuildcon.com](http://dhbuildcon.com)