



EKTA ANTARIX

Address:
Ekta Antarix, Opp Parmeshwar 7,
Nr. City Square Mall,
Godrej Garden City,
Jagatpur - 382470

Location:



Mo.:
8866091333,
8866091444

Developer



Architect & Structurer



EKTA
ANTARIX
3 BHK FLATS & SHOPS

GATE WAY TO HAPPINESS



Ekta Group have established a standing for high quality construction, delivering customer satisfaction and achieving project excellence in affordable price since **2012**.

The company is specialized in constructing multi storied, low and high rise commercial & residential apartment buildings. We have delivered many projects over the decade. We incorporate the taste of customers at the time of planning the project.

EKTA ANTARIX



*'Antarix' is all about
the Space & Serenity*

We use this space(Antarix) to manifest your dreams.
Make your dream come true with "Ekta Antarix".

EKTA ANTARIX

3 BHK FLATS & SHOPS

Some of our very well known projects "Anusthan" & "Antarix" are the example of our success. Our speciality is four side open luxury apartments providing privacy & premium space with huge amenities. "Ekta Antarix" have received wide positive response from people. The object of this project is to provide wide space and luxury in affordable price.

 Jagatpur

Premium Space
Luxuries Lifestyle



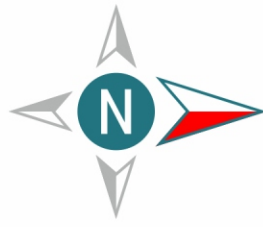
EKTA
ANTARIX



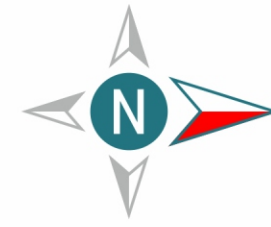
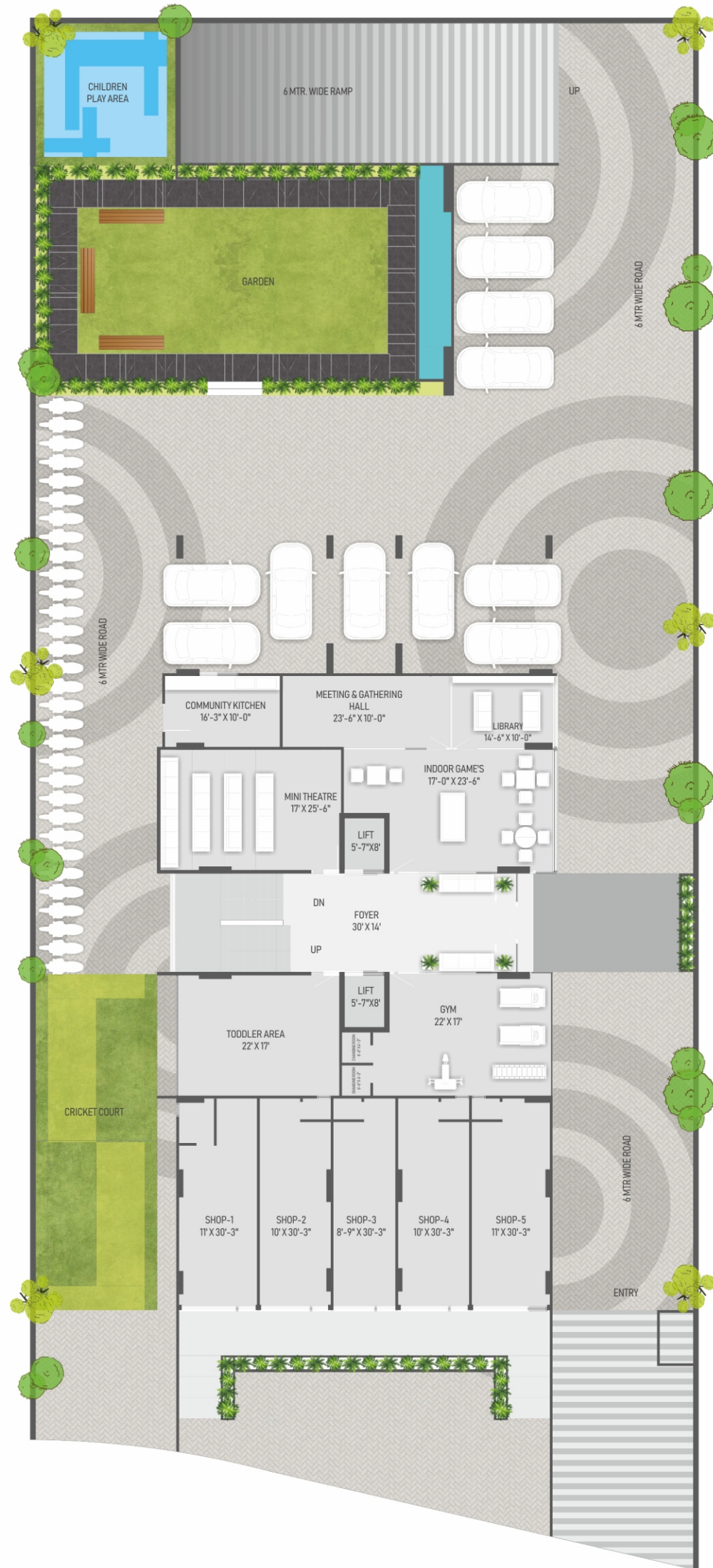
Only
52
Unit

We make homes

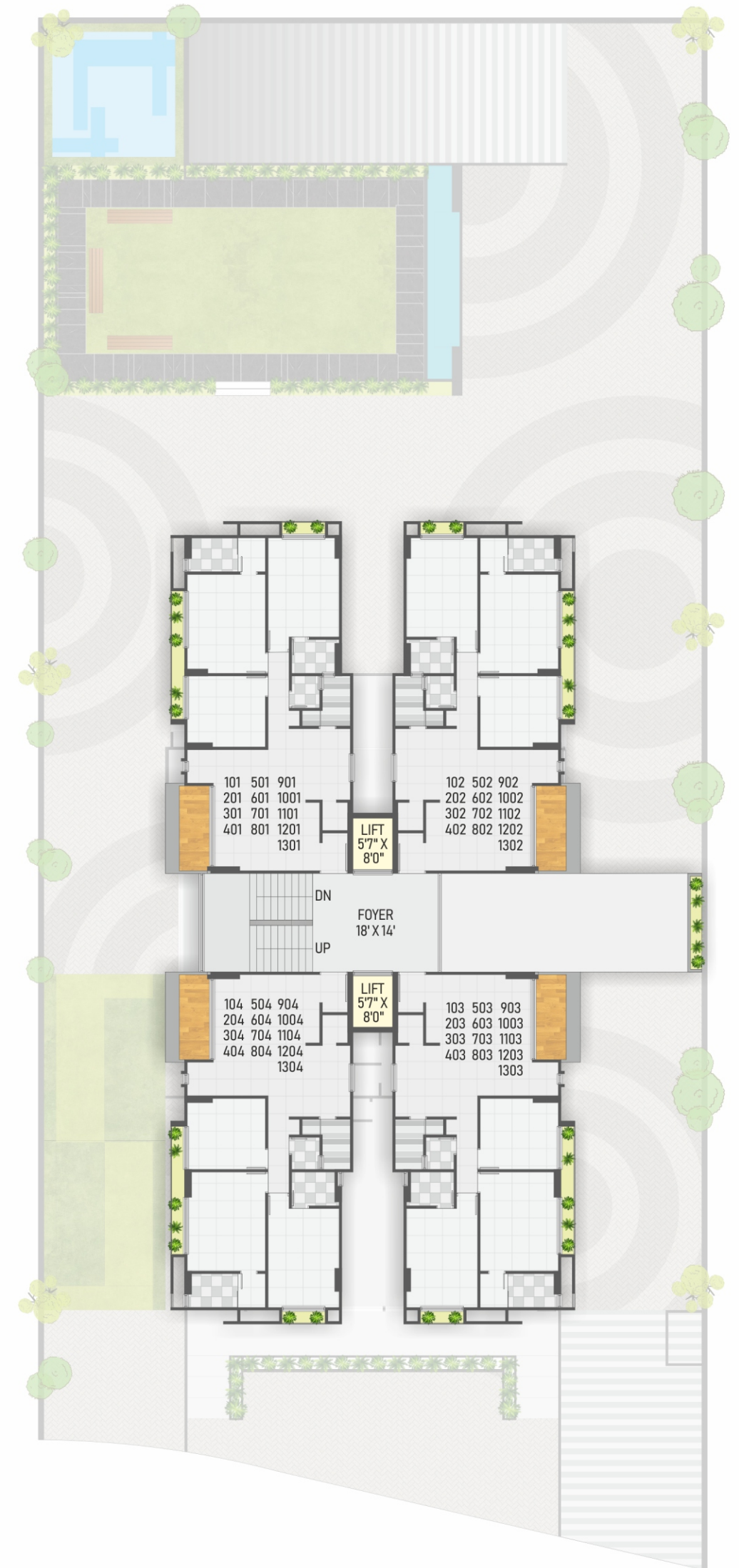
not only to live a life,
But to make your life memorable.

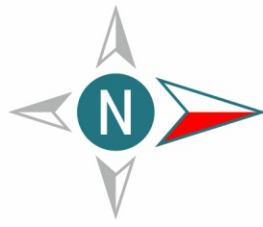


Ground Floor Plan

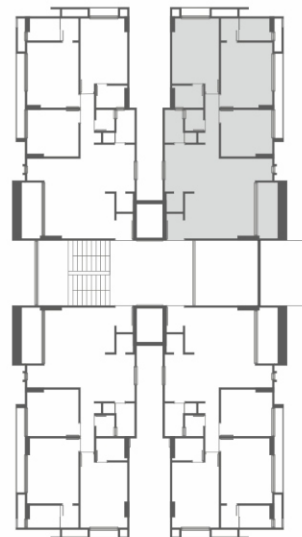
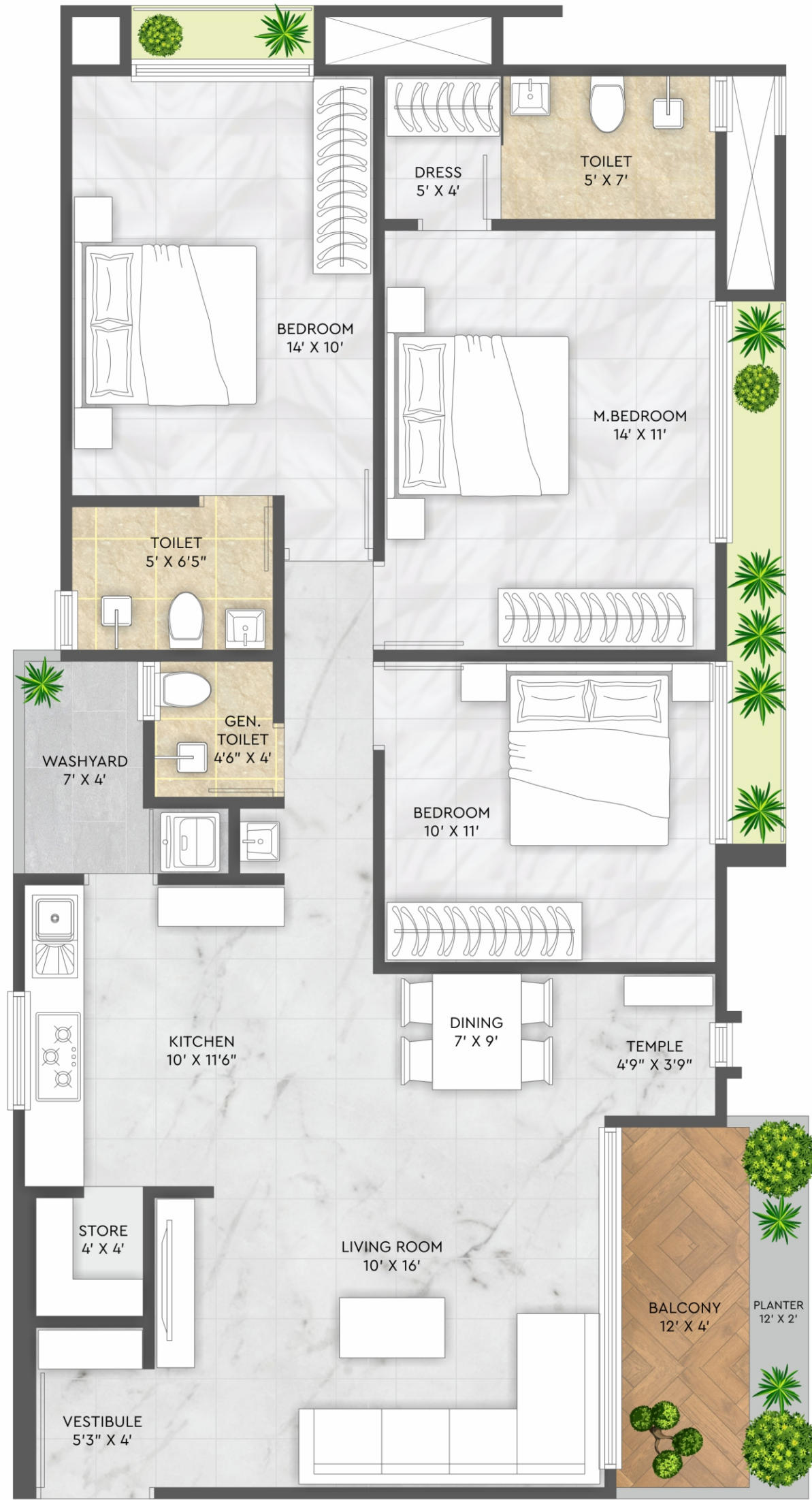


Typical Floor Plan





Unit Plan



Box Balcony With Plantation facility.

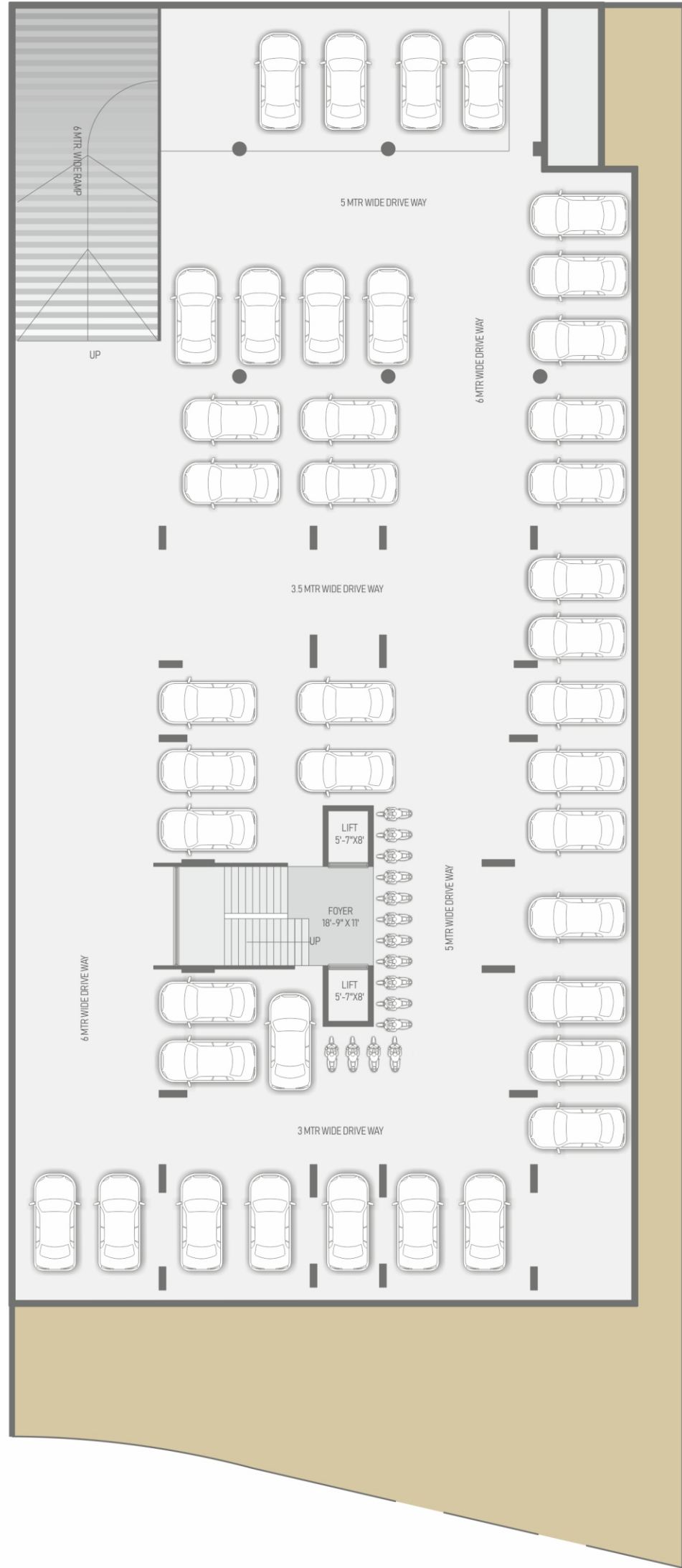


Luxury in each detail

The zest of beauty & luxury is in every corner of the house.



Basement Plan



EKTA ANTARIX

Space as huge as our Heart!

The lavishly planned entry space is perfect for those who loves palatial entry space.





Have the experience of theatre by being home itself



*Performe better
Be fitter*



*Books are the
Best friends forever*



*Be the best version of
yourself from yonger age*



Leisure Amenities



TENNIS COURT



CRICKET PITCH



SITTING GAZEBO



PARTY LAWN



JOGGING TRACK



THEATER ROOM



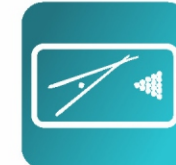
GYM



TODDLERS
PLAY AREA



ATTRACTIVE
FOYER



POOL TABLE



WATER BODY



COMMUNITY KITCHEN



LIBRARY



INDOOR GAMES



CCTV



MEETING &
GATHERING HALL



PICKUP DROP-OFF
ZONE



ATTRACTIVE
WATERFALL



AUTOMATION
SECURITY SYSTEM



CHILDREN
PLAY AREA



70% Open Space

- Design For no Overlooking To Other Flat.
- Adequate Demarcated Parking Provision, At Least One Car Parking Per Flat.
- All Flat Road/Garden Facing
- 24 Hour Manned Security On Entrance Gate
- Articulated Interior Spaces With Openable French Windows For Optimum Sunlight & Air Ventilation
- Allocate Space For Air-conditioning
- Landscaped Common Areas To Preserve And Enhance The Natural Characteristics Of Site
- Energy Efficient Hydro Pneumatic Pressure System To Supply 24 Hour Water With Uniform Pressure.
- fire Protection-fire Detection / Sprinkler System As Per fire Safety Norms
- Dg Backup System For Elevator, Water Supply and Common Litght

To Landmark

Vaishnodevi Circle.....	2.5 km
Nirma University.....	2 km
Airport.....	13 km
Kalupur Railway Station.....	11 km
Motera Cricket Stadium.....	8 km
S. G. Highway.....	2 km
GSRTC Bus Stand.....	6 km
Global International School.....	0.5 km
SGVP Hospital.....	4 KM



*Live
Elegant Life Style*

E « T A
ANTARIX





Specifications

Structure

Safe & Sound - Quality controlled R.C.C. frame structure and earthquake resistant design as per IS 1893 & IS 4326 criteria

Floors

Vitrified Flooring
Anti skid Flooring in wet area
Digital tiles with morden concept up to lintel level in all bathroom & kitchen
Granite Top Kitchen Platform with S.S. Sink.
Kota stone shelf in store room and wash area.

Electrification

Concealed Three phase wiring with ISI grade copper flexible fire resistant wire of good quality good quality modular switches with ELCB/MCB

Elevators

Two automatic elevators of reputed brand

Fire

As Per AMC Fire Norms.

Plaster Work

all external wall texture finished and all internal wall with acrylic based putty finished

Door & Window

Decorative main door with safety locks
internal door with good quality flush shutter.
Water resistant & easy to maintain anodized aluminum sliding windows for modern look & better efficiency of A.C. & Sound Proofing.

Plumbing & Sanitation

Corrosion free & leak proof CPVC /UPVC pipe & fittings
Bath fitting of reputed brand with ceramic cartridge & quarter turn series.

Waterproofing

Waterproofing in all toilets & terrace area
Chine mosaic in all terraces for heat reflection.

Gas

Adani / Sabarmati Gas Line.

Terms & Condition

- Right of any changes in dimensions, design & specification are reserved, with the developer, which shall be binding to all members
- External changes shall not be allowed any time.
- All applicable Govt. taxes such as Stamp duty, Registration fees, GST, Other govt. charges, any additional liabilities due to changes to govt. local authorities by laws prior, during or after the completion of the scheme will be also borne by the members as per prevailing law.
- Dimensions are unfinished wall to wall with tolerance of 3 inches.
- Only fixed internal changes shall be allowed with prior permission and shall be charges extra.
- GEB charges, Legal charges, AMC charges, deposits and Other Govt. charges shall be paid separately.
- Maintenance advance and initial period maintenance should be paid separately.

Notes

- Every care has been taken in preparation of particulars in this brochure. Agreement for allotment shall be final binding to purchaser. plans, Elevation, 3D Pictures, Layout and Specifications shown in the brochure are indicatives only. The real development may differ due to local regulations, other policy of constant improvement, and/or other circumstances.
- This brochure is intend only for general information of the scheme and dose not part of legal document.
- 10 % Cancellation Charges On Basic Amount.
- Terms & Conditions as per separate agreement

We Do Not Allow

- Any grill of screening outside unit.
- Any open wiring / cabling outside building
- Any changes in exterior elevation in any case.