



**PEACEFUL LIFESTYLE HAS A NEW ADDRESS...**





# MM LAKECITY

— 3 | 4 | 5 BHK LIFESTYLE HOMES —

## SWANKY VILLAS. SERENE LAKE. STUPENDOUS PROJECT!

MM LAKECITY is a magnificent residential project that boasts of 3-4-5 BHK swanky abodes for the elite. The project features 80 marvellous villas surrounded by a 600 ft. lake frontage, located near the upcoming Vapi-Silvassa road.

Blessed with immaculate construction, outstanding environs, brilliant amenities, and the like, here is a project that guarantees perfect living standards for all.

After all, why do you have to compromise on serenity in the face of modernity?





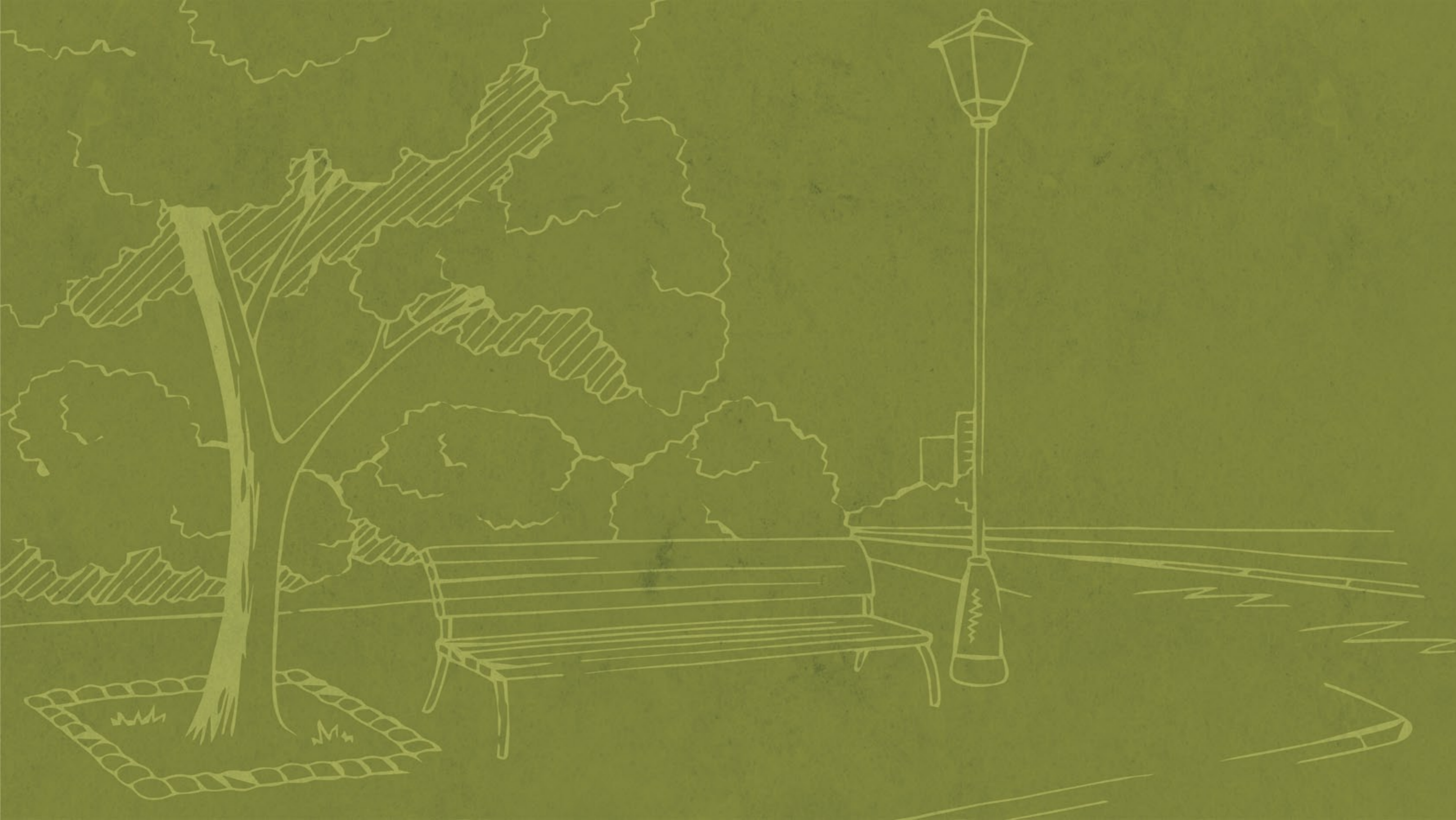
*Let the aquatic calmness make  
living worthwhile in bliss!*





*Witness the majestic lake  
that makes every day charming as ever!*





# BEYOND EDEN

Experience the Garden of Eden beyond the realms of heaven to the realm of pure satisfaction and tranquility, beset by verdant walkways and seating spaces.



Gazebo with Seating



Garden



Senior Citizen Park



Acupuncture Pathway





*Let quiet evenings  
find their space for solace!*

Residents can spend some quality time basking in the environs using the comfortable seats and patios to enjoy leisure.





*Let activities and sports find their rightful space!*

Every resident can drive their energies to positivity with proper sporting spaces and playing areas, reserved for tiny tots as well as oldies!



Basketball Pole



Badminton Court



Children Play Area



Toddlers' Play Area







# 360 THE CLUB

360 - The Club is a comprehensive clubhouse to unwind and recharge energies as it hosts a spectacular swimming pool, a well-stocked gym, and a banquet hall for organizing parties and celebrations.



Swimming Pool



Party Lawn



Banquet Hall



Gymnasium





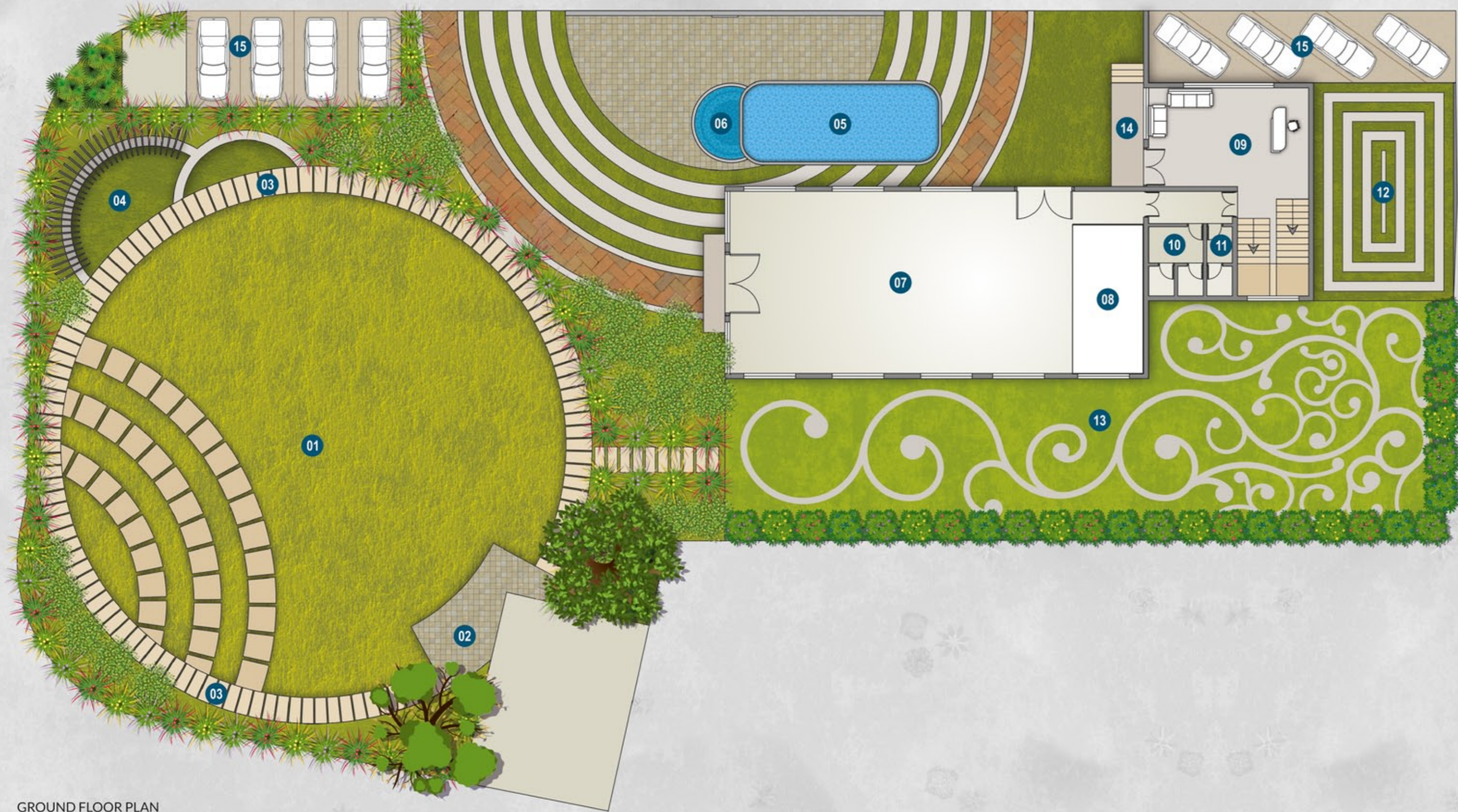


*Green Grandeur  
at its Best, right here!*

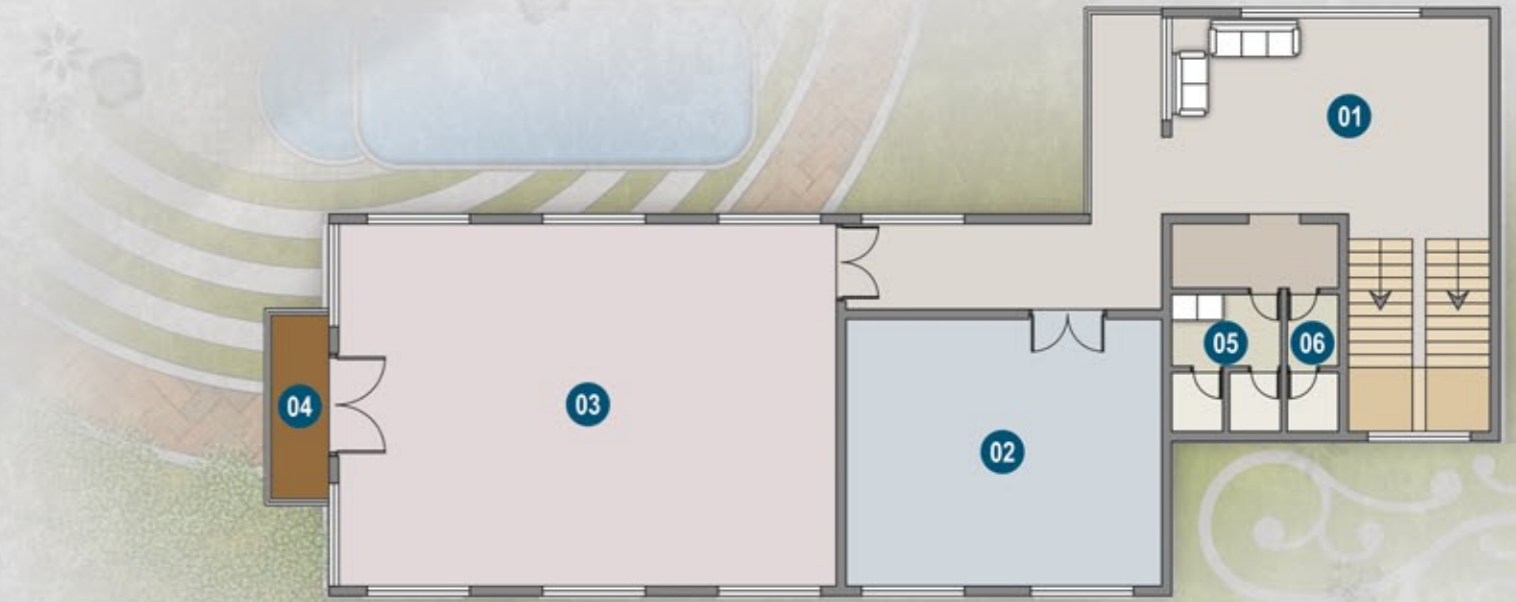
Nature provides its pristine form for MM LAKECITY in more ways than one! Let the verdant lawns, the shrubs, trees, and the aquatic avenue find their identity in the midst of beautiful abodes.







GROUND FLOOR PLAN



FIRST FLOOR PLAN

LEGEND

GROUND FLOOR PLAN

- 01 Party Lawn
- 02 Paved Area for Food Serving
- 03 Stepping Stone
- 04 Pergola with Seating Area
- 05 Swimming Pool
- 06 Kids' Pool
- 07 Banquet Hall
- 08 Stage

FIRST FLOOR PLAN

- 09 Reception Area
- 10 Gents Toilet
- 11 Ladies Toilet
- 12 Serving/ Food Preparation Area
- 13 Lawn Area
- 14 Otta
- 15 Parking

FIRST FLOOR PLAN

- 01 Waiting Area
- 02 Game Zone
- 03 Gymnasium
- 04 Balcony
- 05 Gents Toilet
- 06 Ladies Toilet



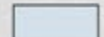

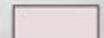

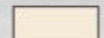
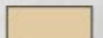


SITE LAYOUT PLAN

↑ TO SILVASSA

↓ TO VAPI



- |   |  |
|---|--|
|  5 BHK   33'0" x 45'1" |  5 BHK CORNER |
|  4 BHK   33'0" x 45'1" |  4 BHK CORNER |
|  3 BHK   21'0" x 42'8" |  3 BHK CORNER |

\* Corner Bungalows are with different Measurements.

LAKE

CLUB HOUSE

SHOPS

200' Wide Internal Road

200' Wide Internal Road

200' Wide Internal Road

200' Wide Internal Road

200' Wide Internal Road

400' Wide Internal Road

600 FT. LAKE FRONTAGE

400' Wide Internal Road

400' Wide Internal Road

200' Wide Int. Road

200' Wide Int. Road

400' Wide Internal Road





# MM LAKECITY

RESIDENCES

MM LAKECITY breathes luxury and sophistication through every nook and corner, as its abodes are blessed with the best of elements that elevate the living standards. The amenities bring forth the comfort that is a promise for every resident to live fulfilling lives!



80 Units



600 Ft. Long  
Lake Frontage



EV Charging  
Point

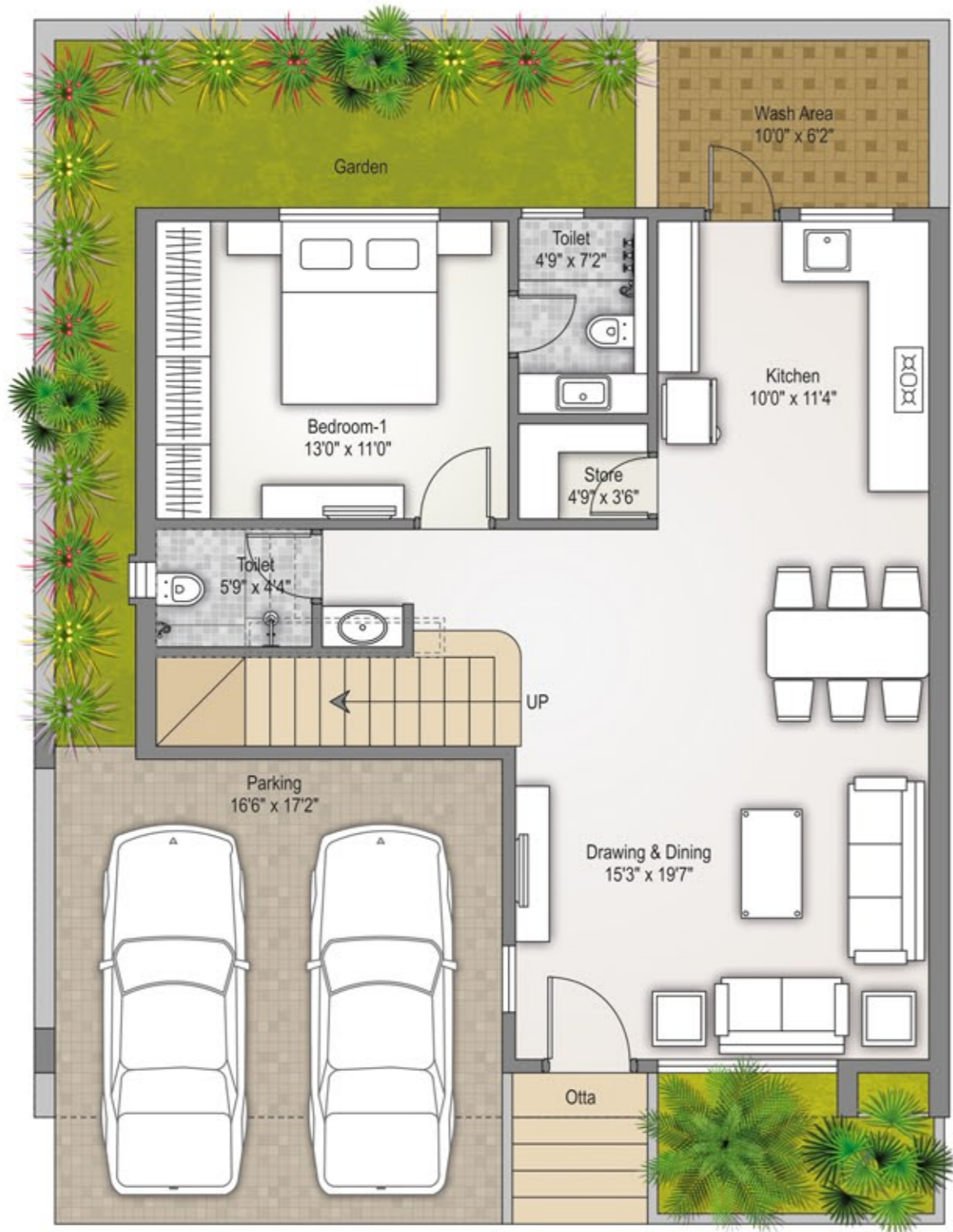


Peaceful  
Location





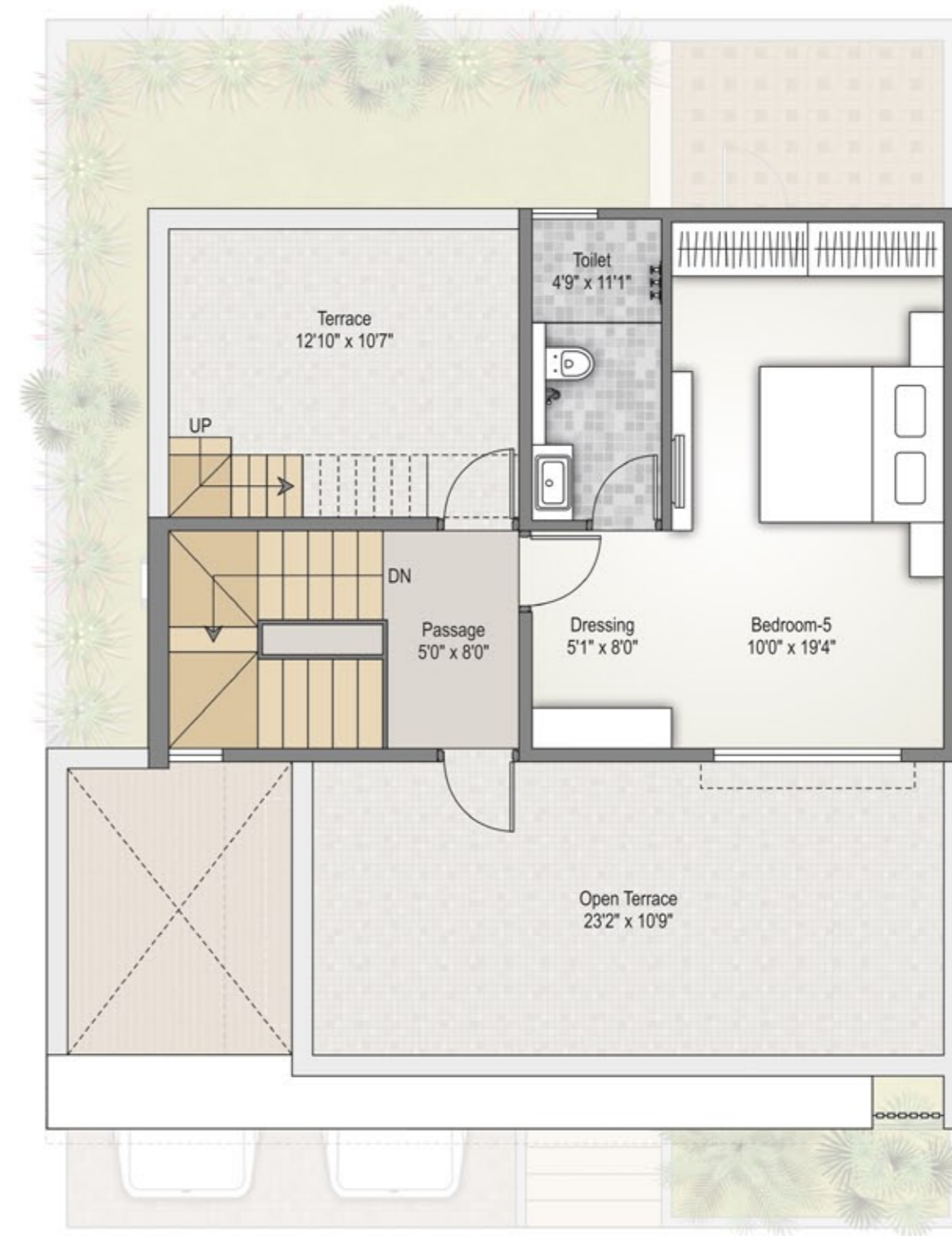




5 & 4 BHK - GROUND FLOOR PLAN



5 & 4 BHK - FIRST FLOOR PLAN



5 BHK - SECOND FLOOR PLAN



UNIT PLAN

5 & 4 BHK CORNER



5 & 4 BHK - GROUND FLOOR PLAN



5 & 4 BHK - FIRST FLOOR PLAN



5 BHK - SECOND FLOOR PLAN



*A familial atmosphere  
that binds a community together*

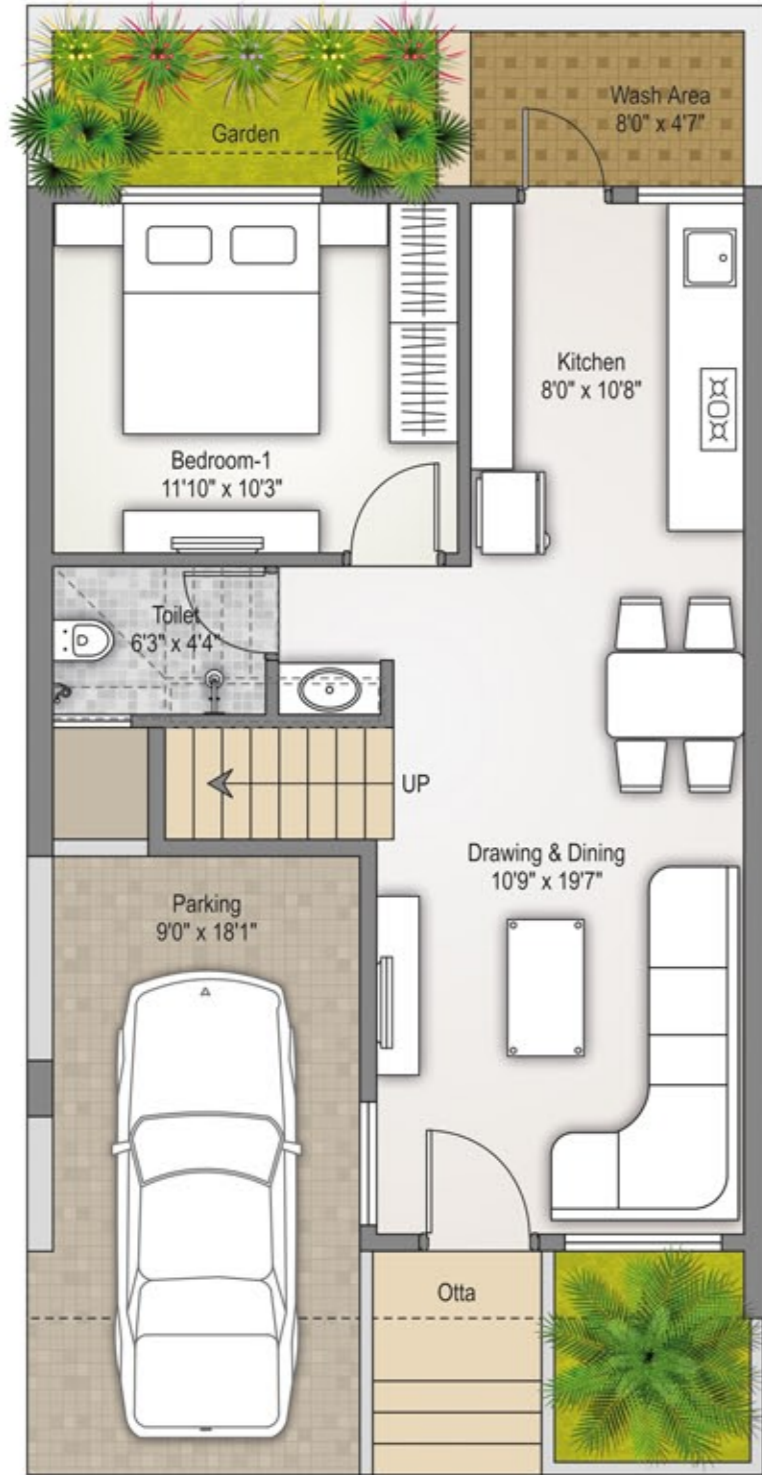
Let MM LAKECITY be a haven of sorts to get communities together that ensure peace, prosperity and collective happiness in multiple ways. May the lavish spread of homes bring forth joy and comfort in equal measure amidst the natural surroundings.



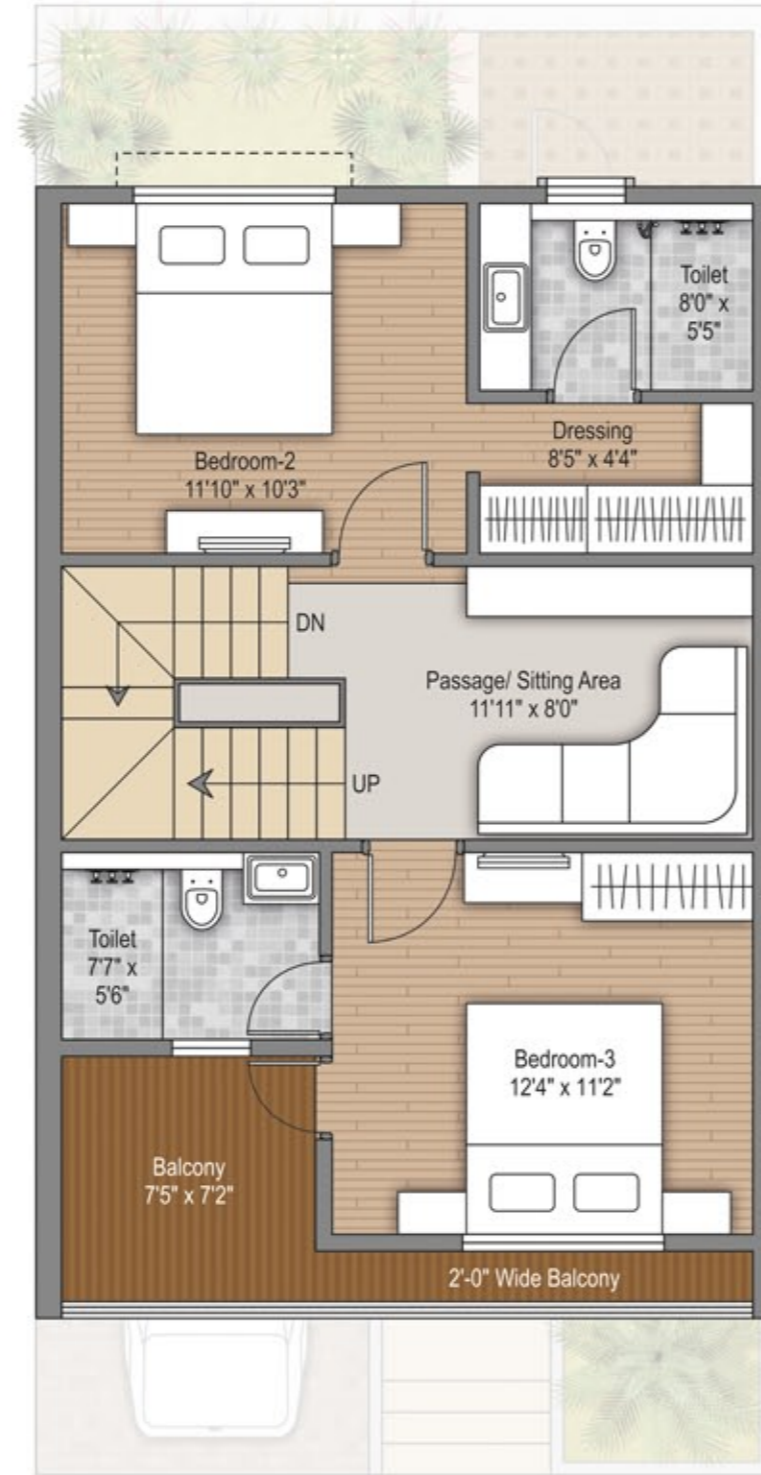


UNIT PLAN

3 BHK



GROUND FLOOR PLAN



FIRST FLOOR PLAN



GROUND FLOOR PLAN

UNIT PLAN

3 BHK CORNER



FIRST FLOOR PLAN





*Excellent interiors finding their space to breathe in sophistication!*



*Rest and rejuvenation delivered as promised within the confines of your bedroom!*

INDOOR GAMES

-  Billiards
-  Table Tennis
-  Carrom
-  Chess and others

OUTDOOR GAMES

-  Basketball Pole
-  Badminton Court
-  Toddlers' Play Area
-  Children Play Area

CLUB HOUSE

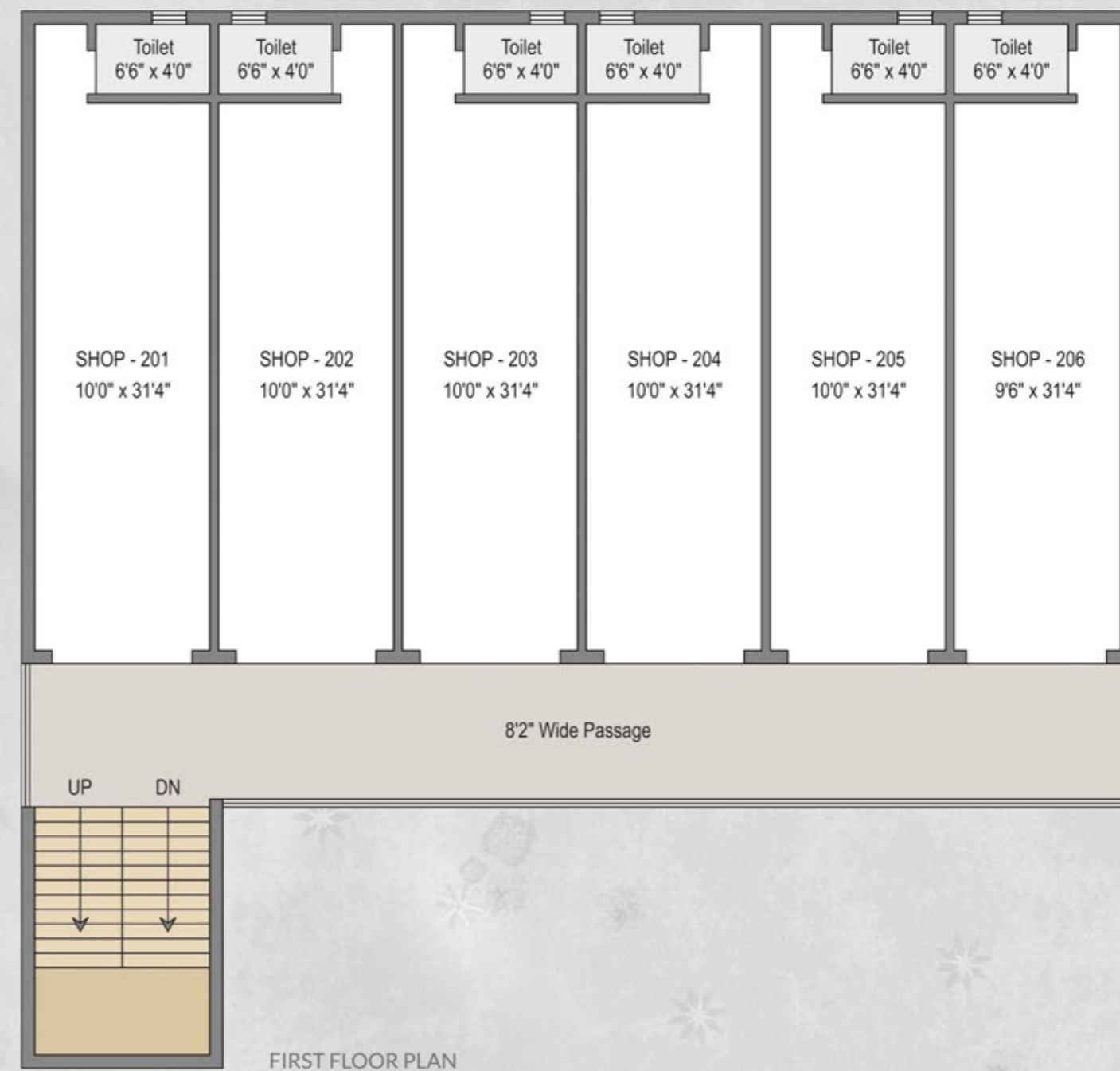
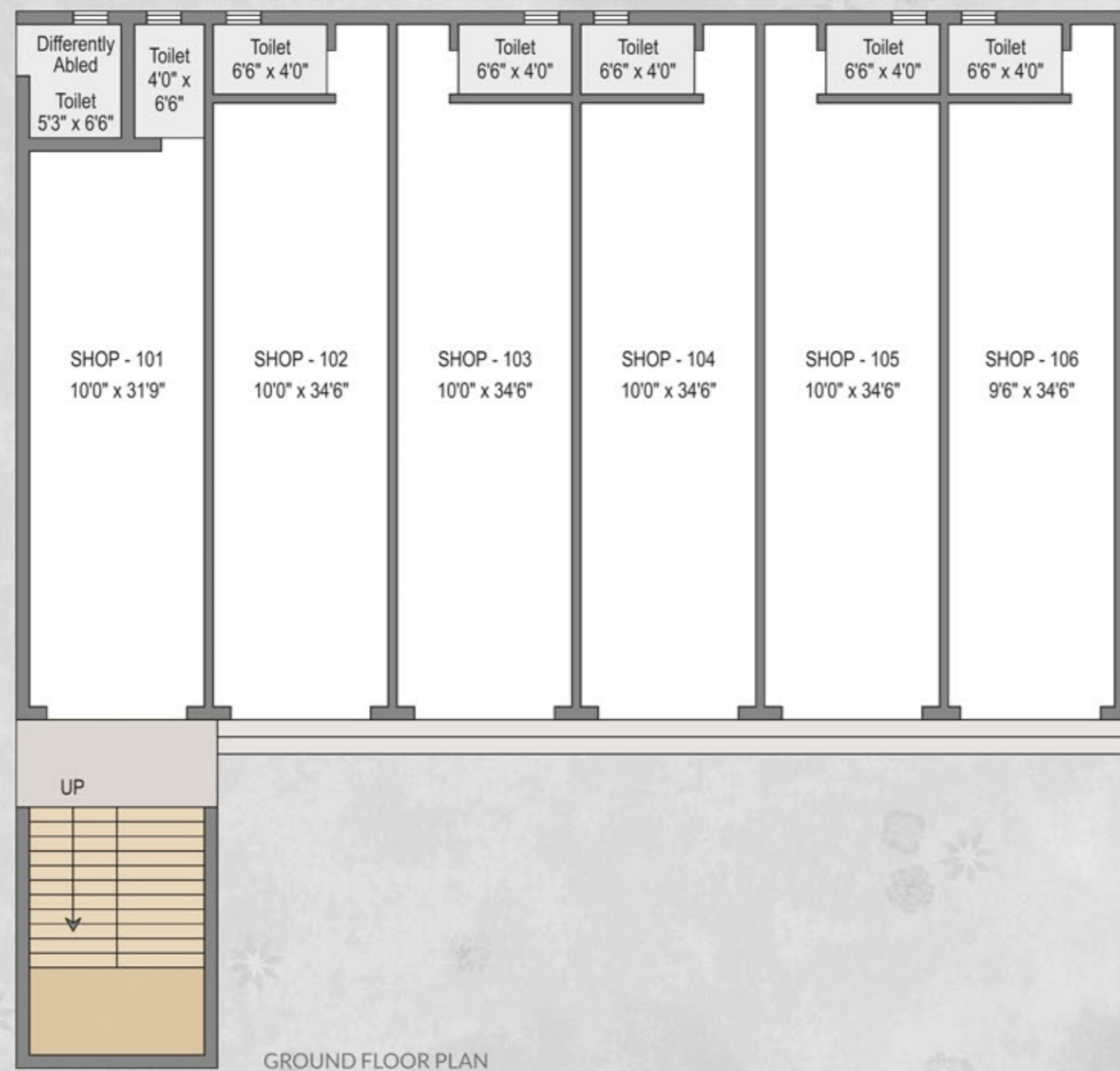
-  Banquet Hall
-  Swimming Pool
-  Kids' Pool
-  Relaxation Deck
-  Gymnasium
-  Event/ Party Lawn
-  Food Preparation Area

OTHERS

-  600 ft. long Lake Front
-  Pergola
-  Senior Citizen Park
-  Garden
-  Gazebo
-  Waterbody
-  24 x 7 Security



## COMMERCIAL PLAN



## SPECIFICATIONS - COMMERCIAL

### SALIENT FEATURES

- Structure Design as per BIS Norms
- 60% Open Space for Parking
- Complete Parking area paving with high-end Paver Block
- Proper Water Proofing treatment for Terrace

### EXTERIOR SURFACE

- Double Coated Sand Face Plaster & Good Quality Exterior Paint

### INTERIOR SURFACE

- Plaster with Wall Putty

### FLOORING

- Branded Vitrified Tile in all Shops

### SHUTTER

- Branded Quality GI Power Coated Shutter for all Shops

### ELECTRIFICATION

- Branded Modular Switches
- Sufficient Electric Points in all Units
- Branded Quality Wiring (RR/ Polycab/ Equivalent)

### BATHROOM

- All lines Concealed by PVC/ UPVC Pipe
- Common Toilet/ Differently Abled Toilet
- Inlet & Outlet Connection point in every Bathroom space

### SECURITY

- 24 x 7 Security Staff
- CCTV Camera Facility

### WATER SUPPLIES - 24 X 7

- Overhead Tank Facility



## SPECIFICATIONS - RESIDENTIAL



### STRUCTURE

- Earthquake Resistant R.C.C. Frame Structure



### KITCHEN/ STORE

- Ready to use Granite finished Platform with branded SS Sink
- Branded Glazed Tiles dado upto lintel level
- Kota Shelves in Storage Space



### WALL FINISH

- All Internal 6" Walls finished with putty over Mala Plaster
- All External 9" Walls finished with double coat Sponge plaster with paint



### DOORS & WINDOWS

- Decorative Wooden Main entrance Door with brass fitting
- All other Bedrooms & Bathrooms with Flush Doors
- Wooden framing for main Door and Granite framing for all other Doors
- Granite framing for all Windows
- Powder coated sliding Windows with Mosquito Net



### PLUMBING

- Concealed Plumbing with Premium quality Pipes and Fittings
- Concealed Plumbing for Water Purifier in Kitchen



### BATHROOMS

- Elegantly designed Bathrooms. Tiles with dado upto lintel level
- Sanitaryware & C.P. Fittings of Jaquar or equivalent brand in all Bathrooms



### FLOORING

- Branded Vitrified Tiles 800 x 1600 of Sun Heart/ AGL/ equivalent make in Drawing Room, Dining area, Kitchen and all Bedrooms. Bathroom flooring of 600 x 1200 in Matt finish
- Kota Stone in Wash Area
- Granite finish on Stair case
- Pest Control Treatment



### ELECTRIFICATION

- 3 - Phase Concealed Copper flexible wiring with adequate number of electrical points & branded Modular Switches, with Polycab or RR Kabel wire
- TV Point in Drawing Room and all Bedrooms
- AC Point in Drawing Room and all Bedrooms
- Refrigerator, Mixer, Water Purifier point in Kitchen and Washing Machine Point in Wash Area
- Centralize distribution board with MCB & ELCB for Safety Protection
- DG or Inverter Power backup for all common amenities
- Electric Vehicle charging point in Parking area
- Centralized Geyser Point on Terrace



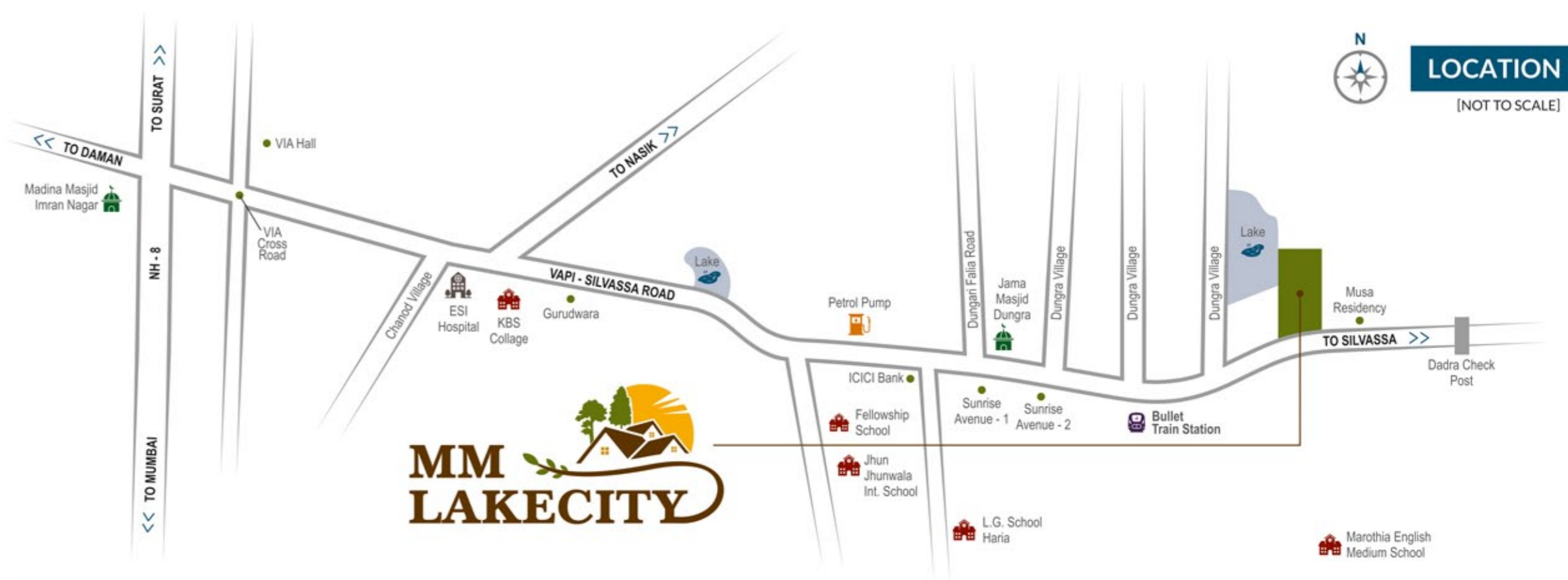
### SECURITY SYSTEM

- CCTV Surveillance at all Common areas of Society



### TERRACE

- Terrace finished with suitable Water Proofing and treatment for heat reflection
- Sintex or equivalent overhead PVC Water Tank
- 24x7 Water supply with centralized pressure pumping to all Overhead Tank



### Developers



**MM LAKECITY DEVELOPERS**  
A-211, M CUBE, N.H. 8  
Vapi - 396145.  
[www.themmgroup.co.in](http://www.themmgroup.co.in)

Site Address: **MM LAKECITY**, Silvassa - Vapi Road,  
Nr. Musa Residency, Dungra - 396193.  
**+91 8980 72 9282 | +91 7359 0000 88**

Architect  
**RAJESH ANKLESHWARIA**

Structure Consultant  
**RIDHI S. KEDAR**

MEP Consultant  
**SHRIDHAR DERAJE**

Landscaping  
**KALPAK Y. BHAVE**

### NEAREST AVENUE

Ahmedabad to Mumbai Bullet Train Station..... 500 Mt.	Delhi-Mumbai Expressway.. 2 Km.	Surat ..... 126 Km.
Dadra & Nagar Haveli ..... 1 Km.	N.H. 8..... 6 Km.	Mumbai ..... 169 Km.

**TERMS & CONDITIONS:** All the architectural and interior images in the brochure, are merely simulated interpretations using computer graphics to enhance the customer understanding and are not actual images. ● The colour and general appearance of the flooring and wall tiles, sanitary ware & fittings, walls, ceilings, windows, doors, internal roads, trees, shrubbery etc. shown in the simulated computer graphics images are taken from the object libraries for the purpose of presentation and the prospective buyers of the concerned property are advised to refer to the construction specifications mentioned in the brochure. Additional amenities and/ or utilities not mentioned or shown in the brochure but may be required as per the law, should be deemed to be forming part of the project by the purchaser. ● All Furniture including wardrobes, other sofa furnishings inter-alia curtains, mattresses, bed linen, upholstery etc., lights and other electrical fixtures and appliances like air conditioners, refrigerators, Tv's, telephones, laptops etc., any of the equipment, household accessories inter-alia crockery and cutlery, rugs, carpets, decorative pieces and wall hangings, wall papers, utensils etc., apparels and all other consumable and movable items shown in the simulated images do not form part of the sale of any property by the developer. ● All rights reserved with the developers to make any changes in the project and all the members shall abide by such changes. ● Stump duty, Registration, GST or any other charges and taxes as and when levied by government or any of its body shall be borne by purchaser/ buyer/ legal possession holder. ● This Brochure is for restricted private circulation only and is not to be considered as a legal document with obligations for specific performance. It is meant for the purpose of conceptual presentation only. ● Subject to Vapi jurisdiction only.



RERA REGISTRATION NO.:PR/GJ/VALSAD/PARDI/Others/MAA11400/060323  
RERA WEBSITE: [www.gujrerar1.gujarat.gov.in](http://www.gujrerar1.gujarat.gov.in)

Brochure Conceptualized & Designed by  
OPENMIND 97270 33377



Project by

