



PLUS HOMES

BY MAYFAIR HOUSING



LAUNCHING



PLUS HOMES

Call : +91 808080 9473 | Email : enquiry@mayfairhousing.com
Site Address : Mayfair Virar Gardens, Virar Agashi Road, Bolinj, Virar (W) 401303



The project has been registered with MahaRERA Reg. No.: P99000046231 and is available on website <https://maharera.mahaonline.gov.in> under registered projects.

The Project is mortgaged to ICICI Bank Limited and NOC from ICICI Bank Limited shall be provided for sale of the flats in the project.



Corporate Office: Mayfair Housing, 1 Mayfair Meridian, Near St. Blaise Church, Caesar Road, Andheri (W), Mumbai 400 058
Call : 022 6723 2300 | Web : www.mayfairhousing.com | Email : enquiry@mayfairhousing.com

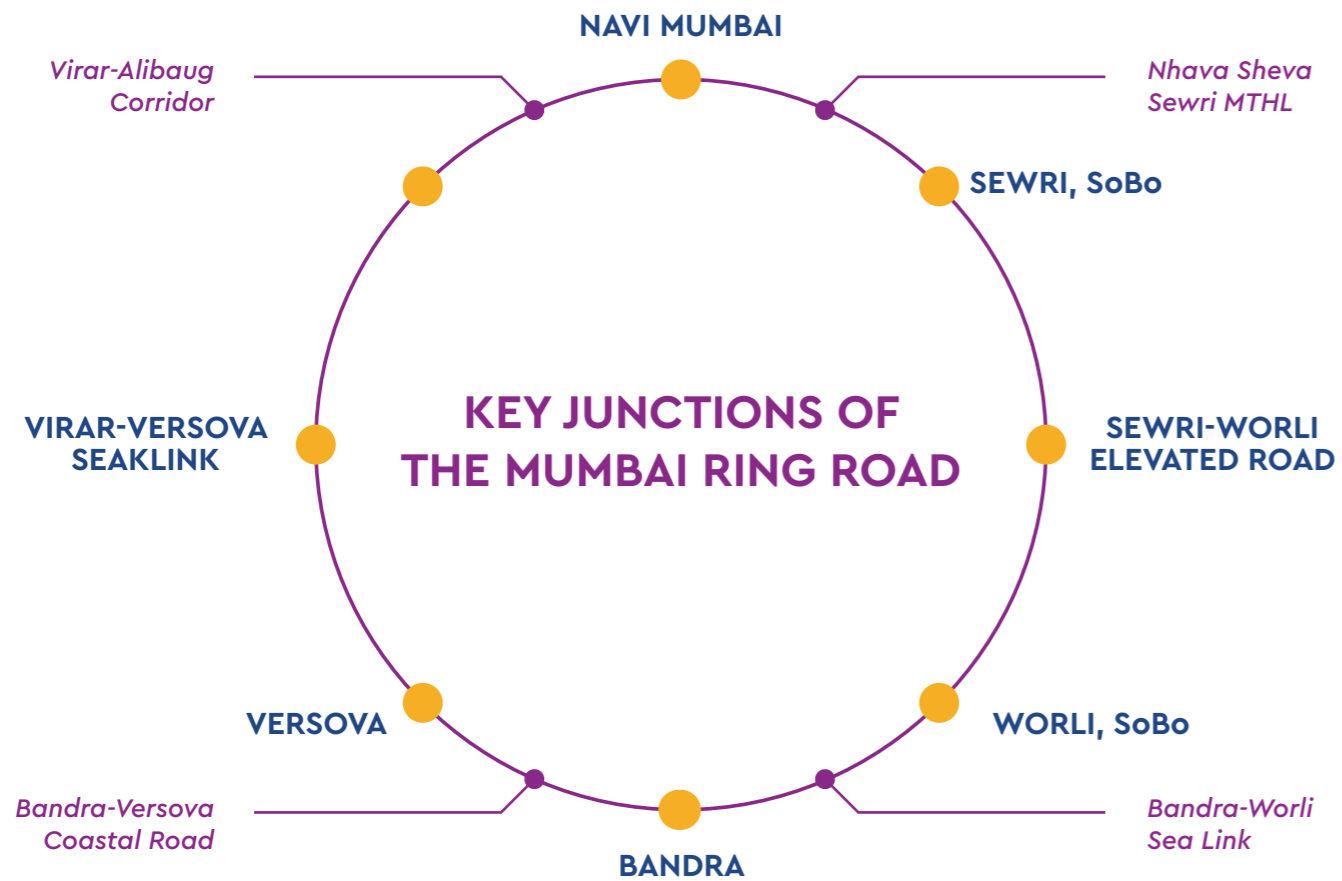
Disclaimer: The information contained in this brochure is indicative of the kind of development that is proposed. It is prepared and issued in good faith and is for reference only. It does not constitute part of an offer or contract. All plans drawings, facilities etc are subject to the approval of the respective authorities and would be changed, if necessary and the developers reserve the right to change plans, specification or features, without prior notice or obligations.

WHERE AFFORDABILITY MEETS LUXURY





MUMBAI IS EXPANDING: AND VIRAR IS THE FOCUS



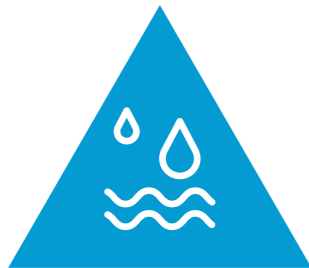
NATURAL BEAUTY OF VIRAR. SET TO COMBINE WITH MAN-MADE INFRASTRUCTURE

THE GOVERNMENT IS INVESTING BIG SO THAT VIRAR GETS CLOSER



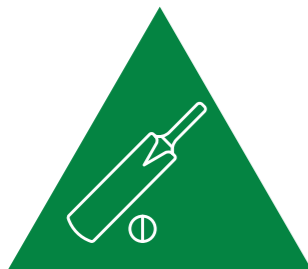
TRANSPORT INFRASTRUCTURE

- Vasai-Virar Link Road
- Intra-city Bus Service
- Western Suburban Railway starting point



WATER SUPPLY AND WASTE SEGREGATION

- Regular Water Supply
- Regular Electricity
- STP & Waste treatment facilities



SPORTS AND LIFESTYLE

- 139+ Gardens
- Gymkhana & Indoor cricket academy
- Olympic swimming pool



MUMBAI METRO LINE 13

The proposed line will ease connectivity to MMR



VIRAR-VERSOVA SEALINK

Direct connectivity to Nariman Point in 1 hour



AHMEDABAD-MUMBAI BULLET TRAIN

Reduce travel time to Ahmedabad to 1 hour



DELHI-MUMBAI INDUSTRIAL CORRIDOR

Will open key trade corridors for industries for Virar



VIRAR-ALIBAUG MULTIMODAL CORRIDOR

A key trade route towards Alibaug will open economic growth for the region





A MEGA TOWNSHIP JUST 5 MINS FROM STATION, CLOSE TO EVERYTHING

- 15 mins to Rajodi Beach
- 7 mins to VIVA College
- 10 mins to Jivdani Temple
- 15 mins to Fun Fiesta Multiplex
- 7 mins to Dmart
- 10 mins to Multispeciality Hospital

The map illustrates the location of Virar gardens, a green rectangular area, situated between Virar West and Virar East. Key landmarks and locations are marked with icons and labels:

- Virar West:** Arnala Beach, Navapur Beach, Rajodi Beach, Kalamb Beach, Vatar, Satpale, Mardes, Wagholi, Navale, Kopharad, Visava Water Park, D'Atlantis Aquapark, St. Joseph's College, St. James Church, Space Apple Paragliding Club, Agashi, Mukkam.
- Virar East:** Viva College, McDonald's, D'Mart, Riddhi Vinayak Multispeciality Hospital, Fun Fiesta Multiplex, Manvelpada Talav Garden, Jivdani Temple, Virar Railway Station, Nallasopara Railway Station.

The map also shows the coastline with Arnala, Navapur Beach, Rajodi Beach, and Kalamb Beach. A railway line runs through the area, connecting Virar East and Nallasopara Railway Stations. A note at the bottom right states "Map Not to Scale".



AB VIRAR KE SAATH VIRAAT MAUKA

*Nestled in the finest part of Virar,
Mayfair Virar Gardens has already sold out 28 Buildings.
Now comes an opportunity to book a compact but
well-planned home in the newly launched Cluster VI.
These homes come with so many amenities and extras
that we have named them PLUS HOMES.*

LAUNCHING

**PLUS HOMES WHICH MAKE
EVERYDAY AN UTSAV**



LAUNCHING



PLUS HOMES

What is life if you can't get a little extra. That's why, Mayfair Housing introduces PLUS HOMES for those looking to upgrade to affordable luxury at a reasonable cost.

PLUS HOMES are a result of smart planning, ensuring that every square feet gives you greater joy, with amenities that even your next generation will appreciate.



HOUSE KE SAATH CLUB HOUSE

A WORLD-CLASS CLUBHOUSE RIGHT HERE IN VIRAR

For a long time, it was impossible to imagine living in an affordable house that comes with club facilities. This is now history with the launch of PLUS HOMES.



22 ACRES. ONE PLUS HOME



MAYFAIR
APPRECIATING YOU

virar gardens

AMENITIES

1. Clubhouse
2. Fitness Center & Swimming Pool
3. Miyawaki with Sky Walk
4. Pickle Ball Area
5. Lawn Tennis Court
6. Temporary Structure
7. Half Basket Ball Court
8. Skating Track
9. Flower Garden Area
10. Prayer Hall
11. Saibaba Sthapna
12. Cycling Track
13. D.G.







ENTRANCE LOBBY



FLOWER GARDEN



BASKETBALL COURT



VOLLEYBALL COURT



TENNIS COURT



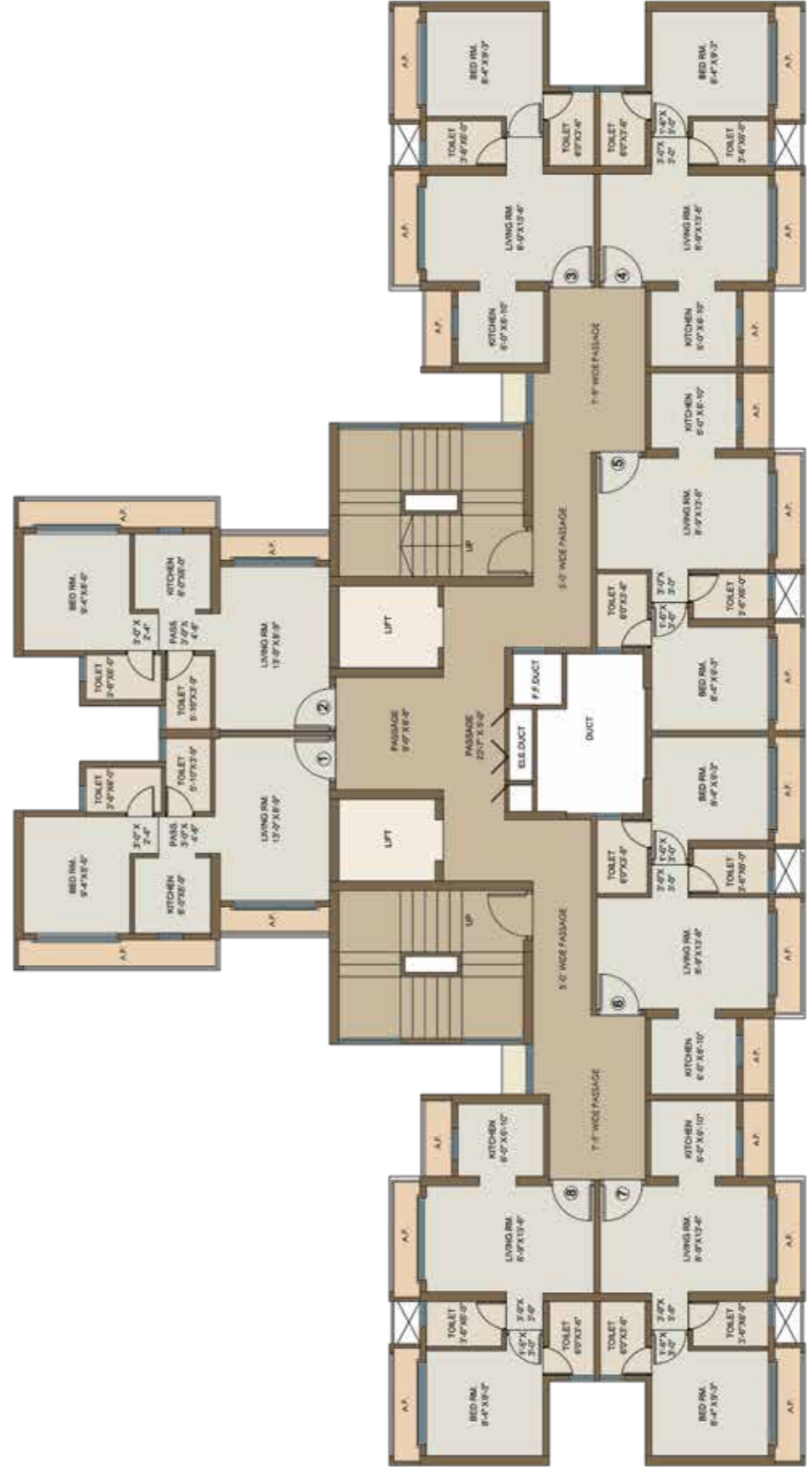
SENIOR CITIZEN PATHWAY



SKATING TRACK

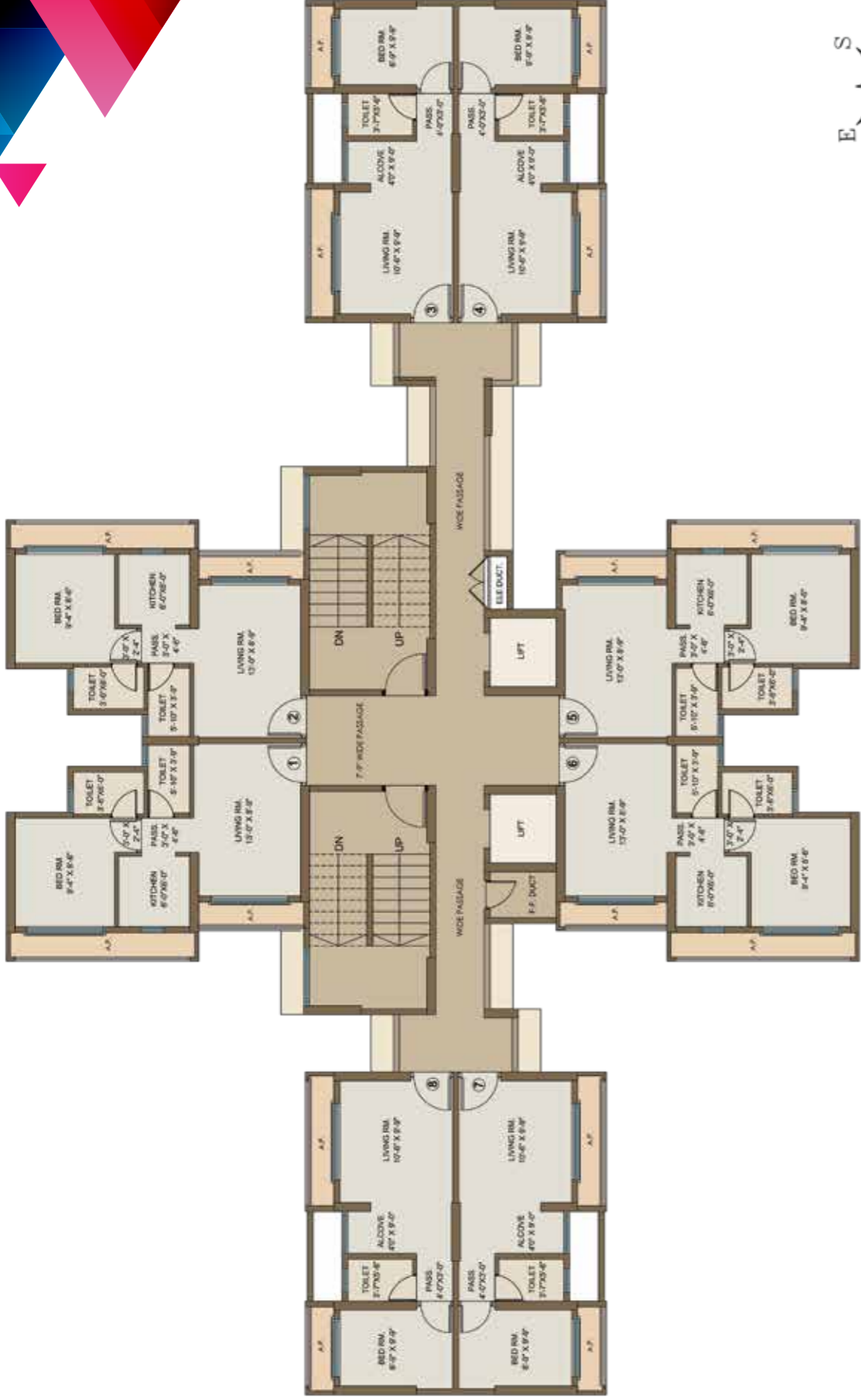


FLOOR PLANS THAT GUARANTEE MAXIMUM HAPPINESS PER SQ. FEET

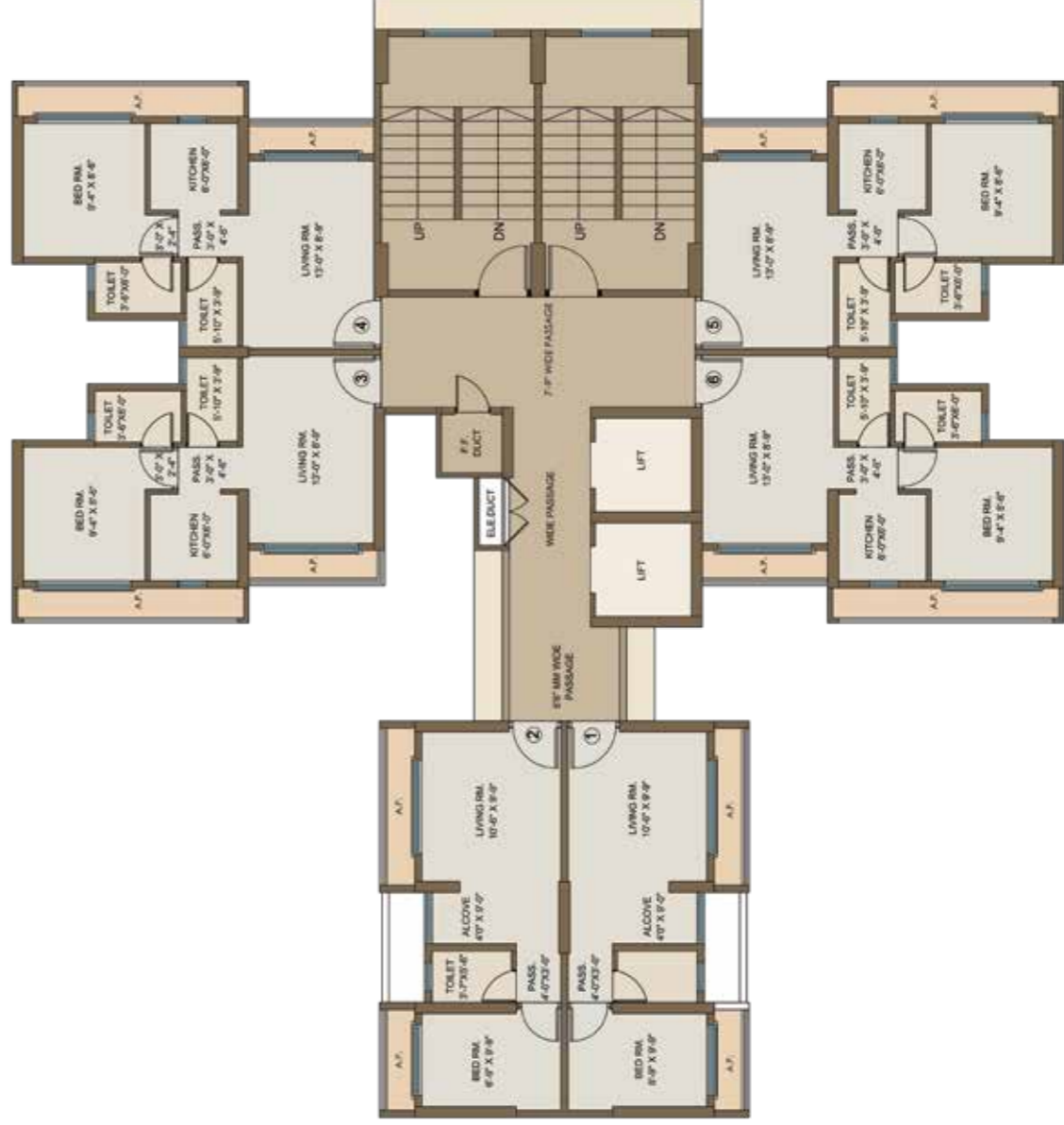


TYPICAL FLOOR PLAN
BUILDING NO. 36, 37, 40, 41 & 42





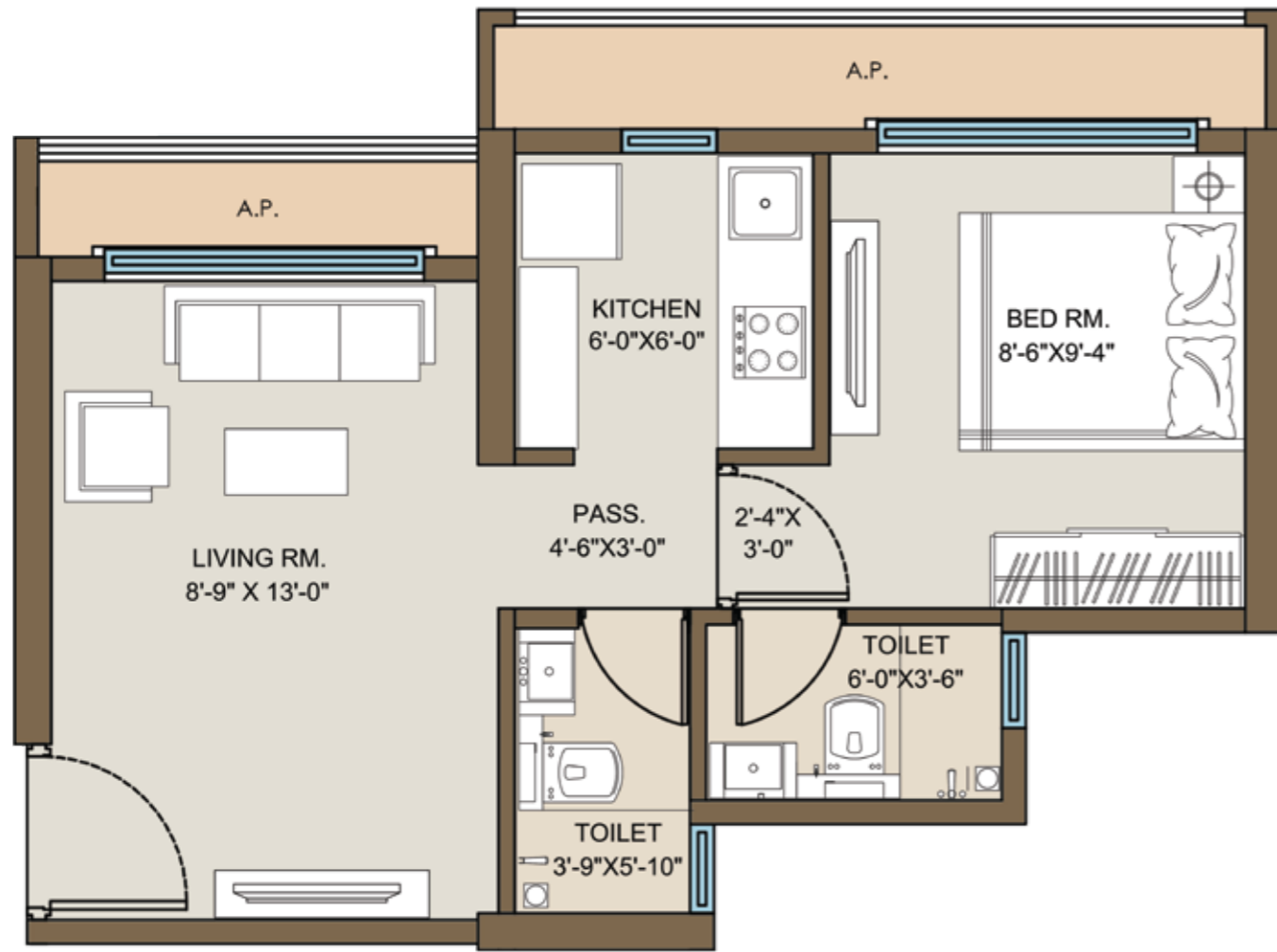
TYPICAL FLOOR PLAN
BUILDING NO. 35



TYPICAL FLOOR PLAN
BUILDING NO. 38



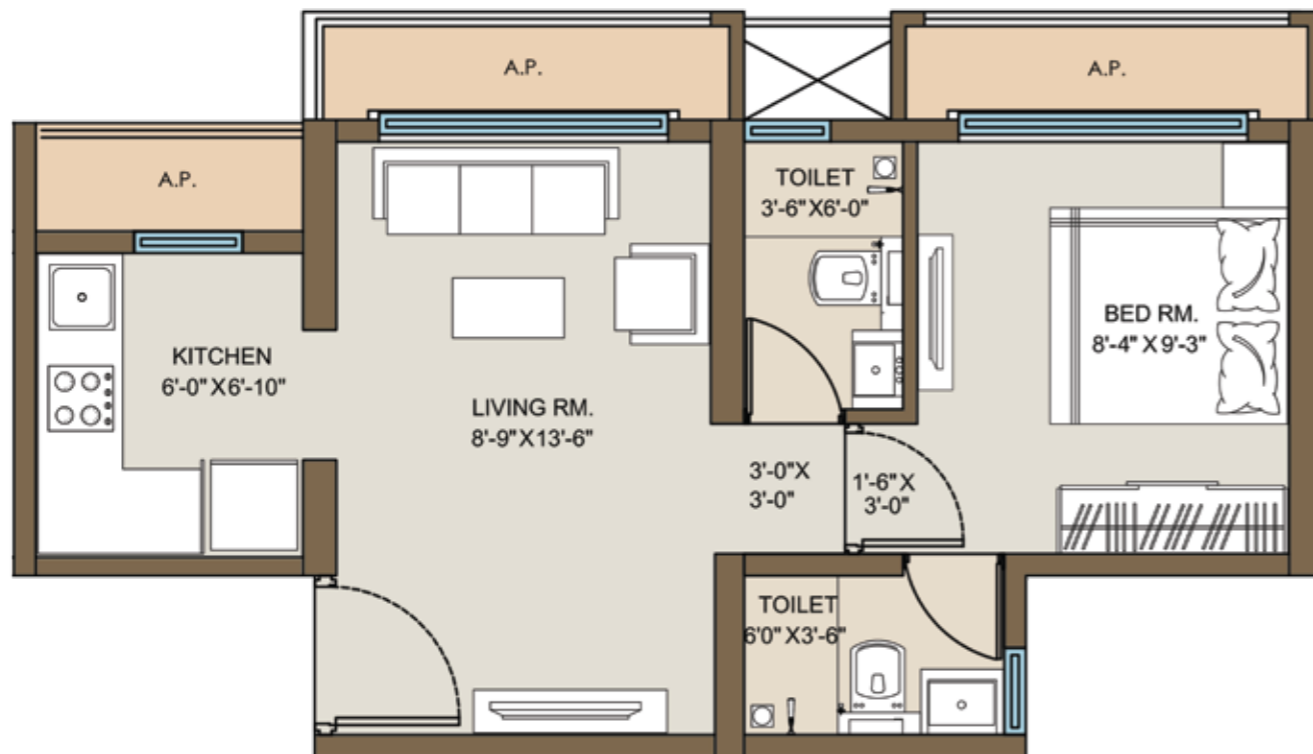
BUILDING NO 36, 37, 40, 41 & 42
1BHK



- *Perfectly rectangular living and dining space*
- *Bedroom with wardrobe niche for added convenience*
- *Architectural Projection in Kitchen ensuring max. space utilisation*
- *2 washrooms per home*
- *Zero space wastage in the passage area*
- *Architectural Projection in living room as well as bedroom allowing ample sunlight, ventilation & gorgeous views*

RERA CARPET AREA	BALCONY AREA	DRY. BAL. AREA	A. P AREA
SQ.FT.	SQ.FT.	SQ.FT.	SQ.FT.
315	-	-	48

BUILDING NO 36, 37, 40, 41 & 42
1BHK



- *Perfectly rectangular living and dining space*
- *Bedroom with wardrobe niche for added convenience*
- *Architectural Projection in Kitchen ensuring max. space utilisation*
- *2 washrooms per home*
- *Zero space wastage in the passage area*
- *Architectural Projection in living room as well as bedroom allowing ample sunlight, ventilation & gorgeous views*

RERA CARPET AREA	BALCONY AREA	DRY. BAL. AREA	A. P AREA
SQ.FT.	SQ.FT.	SQ.FT.	SQ.FT.
315	-	-	47

DAY VIEW



ARTISTIC IMPRESSION

NIGHT VIEW



ARTISTIC IMPRESSION



YOUR HOUSE IS AS GOOD AS YOUR BUILDER

Mayfair Housing is a time-tested real estate developer since 1964. Known for superior quality, smart planning and before-time delivery, it has built more than 50 projects across Mumbai and 1 project overseas. Each of these projects has helped build better lifestyles for families and cemented the reputation of the company as one of Mumbai's most dependable real estate brands.

BROUGHT TO YOU BY
**MMR'S MOST DEPENDABLE
REAL ESTATE BRAND**



50+
PROJECTS
COMPLETED

4,000+
HOMES UNDER
CONSTRUCTION

5,000+
HAPPY
FAMILIES

55,00,000+
SQ.FT
DELIVERED

59
YEARS OF
LEGACY

