

A PROJECT BY



RADHE REALTY

CALL - 99743 45437 / 74053 63831 / 84879 19500

SITE ADDRESS

RADHE KRISHNA LAKE VIEW

Opp, Atlantic Elanza, B/H Reliance Petrol Pump, Vastral, Ahmedabad

PR/GJ/AHMEDABAD/DASKROI/Ahmedabad Municipal Corporation
/MAA12897/070224/310328 | www.gujrera.gujarat.gov.in



SCAN THIS QR
FOR LOCATION

brim.co.in



perfect living
IN THE REFLECTION
OF THE LAKE

for better living

A PROJECT BY



Radiating excellence in real estate, Radhe Realty epitomizes innovation, quality, and trust. Committed to creating inspiring spaces that enhance lives, we redefine luxury living, offering unmatched experiences to our valued clients



2 & 3 BHK

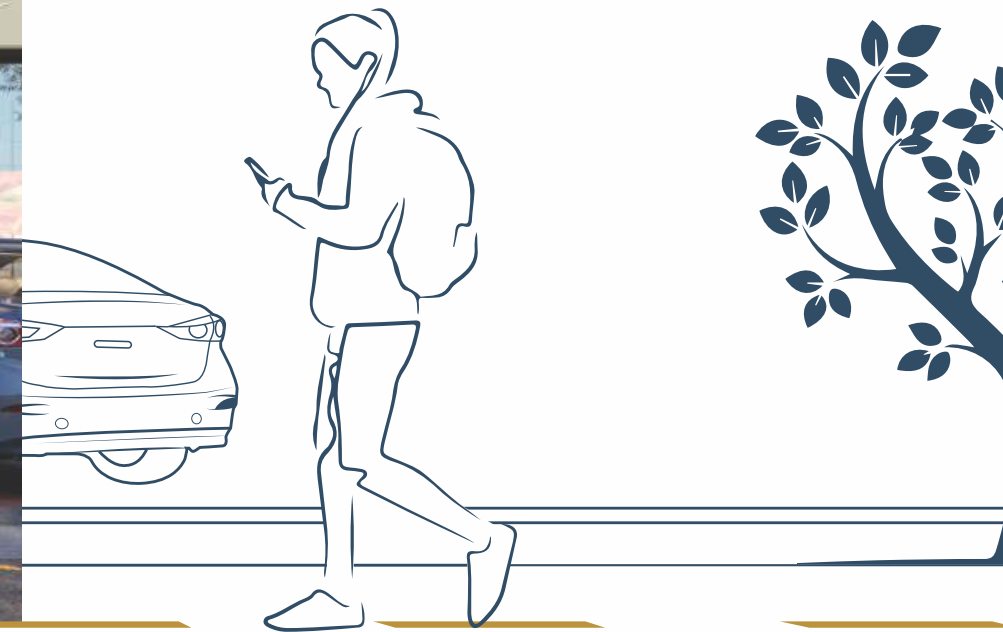
ULTRA LUXURIOUS LIFESTYLE | SHOPS

Welcome to Radhe Realty, where your journey to extraordinary living begins



comfort living

NEAR THE LAKE SIDE



welcoming
ENTRANCE GATE

Enter through our gate into a realm where tranquility meets luxury. Experience the embrace of a community that enhances your lifestyle and enriches your soul from the very start. Welcome to Radhe Krishna Lake View, where every entrance guarantees peaceful living

calming seating FOR SENIOR CITIZEN

Our senior citizen area is a haven where serenity intertwines with celebration. It's a place of comfort and camaraderie, where every corner whispers tales of shared experiences and cherished moments. Rediscover the joy of retirement living amidst picturesque landscapes and unparalleled amenities



children PLAYING AREA

Step into our children's play area—a magical realm where laughter fills the air and imaginations soar. Every moment is an adventure, every corner holds boundless joy. Let your child's world blossom with endless fun and limitless possibilities





exclusive
AMENITIES



24 HRS. WATER
WITH WATER METER



CCTV CAMERA
SYSTEM



FIRE
SYSTEM



GAS
CONNECTION



WELCOMING
ENTRANCE GATE



SENIOR CITIZEN
SITING



INTERNAL RCC
ROAD



ATTRACTIVE
ENTRANCE FOYER



KIDS PLAY
AREA



24 x 7
SECURITY



WELL DEVELOPED
COMMON PLOT

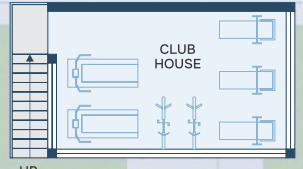


STREET
LIGHT

GROUND Floor



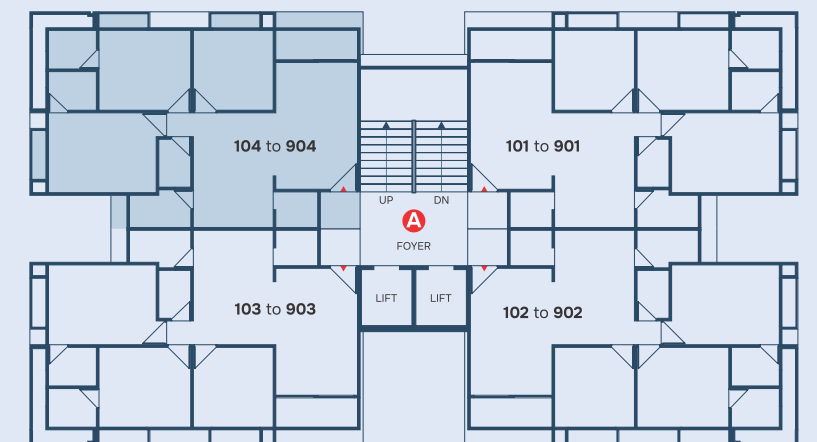
FIRST floor



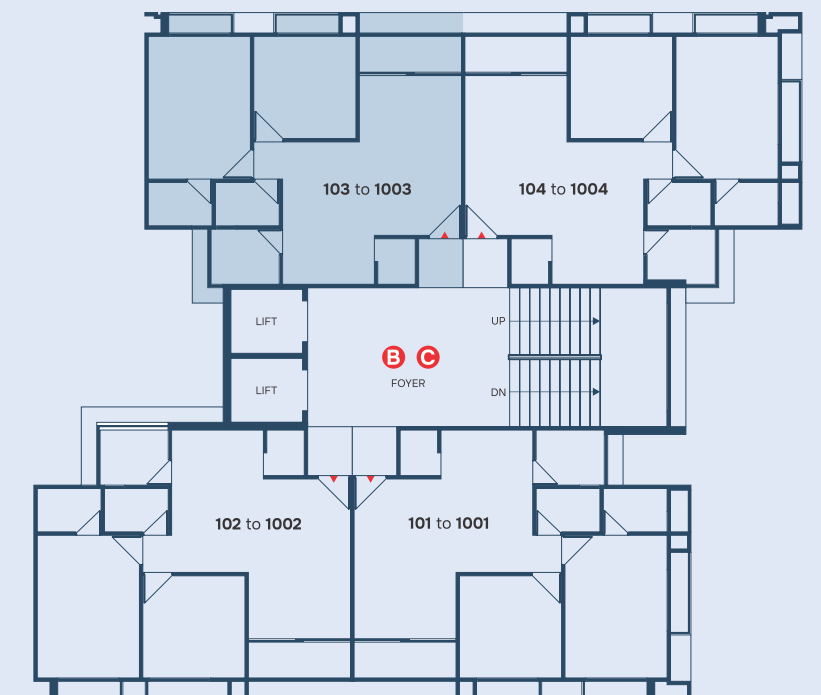
15.00 M.T. WIDE ROAD



type - 1 (3 BHK)
BLOCK - A



type - 2 (2 BHK)
BLOCK - B & C



SPECIFICATIONS

STRUCTURE

Earthquake resistant R.C.C. frame structure as per new by laws.

FLOORING

Vitrified tiles for entire flooring in all apartments.

PLUMBING

CPVC and UPVC pipes for water supply, PVC & SWR pipes for solid waste and drainage systems. Percolation recharge wells as per the norms & Branded CP fittings

DOORS WINDOWS

Decorative main door & other flush doors
All windows in aluminium section with powder coated

KITCHEN

Granite platform with 5.5. sink, designer glazed tiles up to lintel level

TOILET

Designer tiles on floor and walls up to lintel level Branded sanitary & bath fittings

TERRACE

China mosaic flooring with water proofing

WALL FINISHING ELEVATION

Internal mala plaster with white finish putty.
Attractive external elevation with double coat sand faced plaster with 100% acrylic paints

ELECTRIFICATION

Branded modular switches with concealed copper wiring and adequate number of points MCB distribution panel.





NOTES: Changes in elevation shall not be allowed to be done by members of society. All the government & semi government charges like stamp duty, service tax/GST, Vat and any tax by state or central government shall be borne by members. Legal documentation charges, TORRENT, PNG gas connection charges, AUDA, Narmada water charges, Advance maintenance shall be borne by the members separately. All the rights are reserved by developer to make any changes in Layout plan, Exterior elevation, Dimension and other details there in to comply with statutory regulation shall be binding to all the members. Any additional liabilities due to change in the bye laws, shall be borne by members. This brochure is not as legal pan of document but only for easy presentation to members. Subject to Ahmedabad jurisdiction. T&C applicable*

ARCHITECT & ENGINEER
CONSULTANT



STRUCTURAL
CONSULTANT



SCAN THIS QR
FOR LOCATION