



# RADHE SWAPNIL

Nr. 108 Call Center, Opp. Aditya International School, Hanspura, Ahmedabad.

92 65 37 73 72

Developer :



Download Brochure



For Location

Architect :



**DISCLAIMER**

- Stamp duty, registration charges, legal documentation charges, GST, AMC & UGVCL power charges including cable & substation cost shall be borne by the purchaser.
- Irregular payment shall cause cancellation of booking. At the time of cancellation of the booking 10% service charges of total amount shall be levied & balances payment shall be made only after the next available booking. - Possession of the flats shall be delivered only after full payment.
- Any additional charges or duties levied by the government / local authorities during or after completion of the scheme will be borne by the purchaser.
- In interest of continual developments in the design & quality of construction, the developer reserves all rights to make any changes in the scheme including and not limited to technical specifications, design, planning, layout & all purchasers shall abide by such changes.
- Changes/alteration of any nature including elevation, exterior color scheme, balcony grill or any other changes affecting the overall design concept & outlook of the scheme are strictly not permitted during or after the completion of the scheme. - Any member (RCC Beam, Column, Slab) must not be damaged during your interior work.
- Maintenance deposit will be charged extra - This brochure is intended only to convey the essential design & technical features of the scheme and does not form part of legal documents.

2 & 3 BHK LUXURIOUS FLATS & SHOPS

RERA No.: PR/GJ/AHMEDABAD/AHMEDABAD CITY/AUDA/MAA12146/170823  
www.gujrera.gujarat.gov.in







RADHE  
SWAPNIL

**2&3 BHK**  
LUXURIOUS FLATS



THE ULTIMATE EXPRESSION OF

*Luxury* IN HANSPURA







*Landmark*  
OF SPLENDID LIVES



**217**  
LIVING SPACES  
2 & 3 BHK

**44**  
COMMERCIAL SPACES





**3**  
LEVELS PARKING

2 BASEMENT LEVELS  
+  
1 GROUND LEVEL



*Iconic  
Structure*  
THAT DEPICTS TRUE LUXURY



18.00 MT. WIDE T.P. ROAD

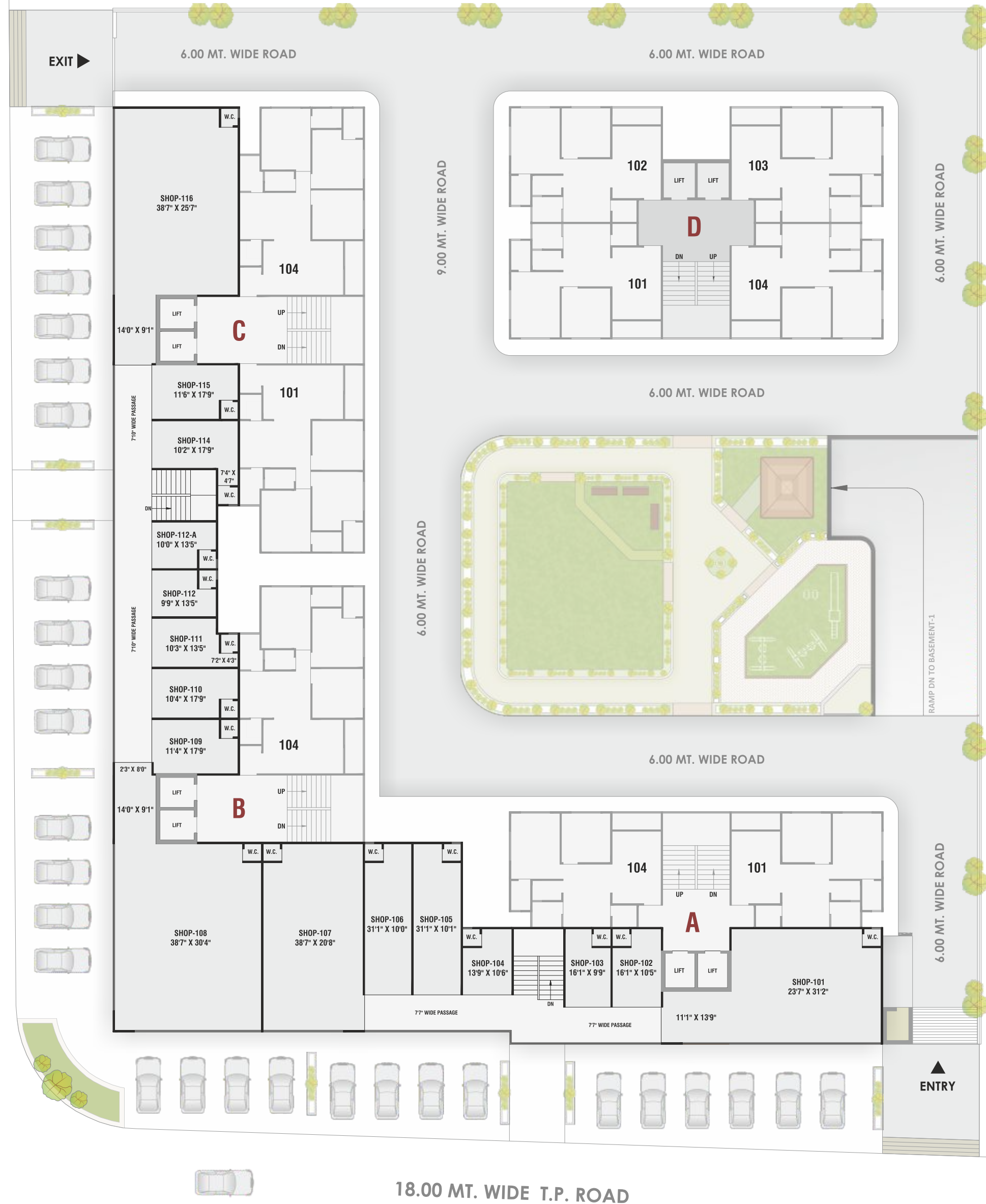


GROUND FLOOR  
SHOPS  
LAYOUT PLAN





18.00 MT. WIDE T.P. ROAD



18.00 MT. WIDE T.P. ROAD

FIRST FLOOR  
SHOPS  
LAYOUT PLAN





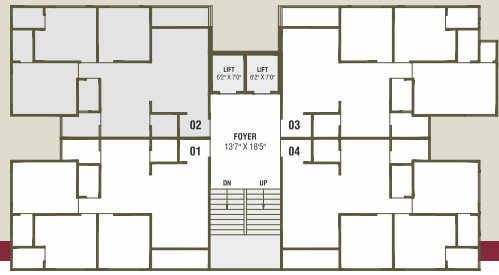
18.00 MT. WIDE T.P. ROAD



### TYPICAL FLOOR LAYOUT PLAN



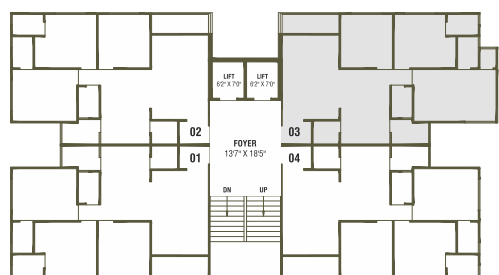
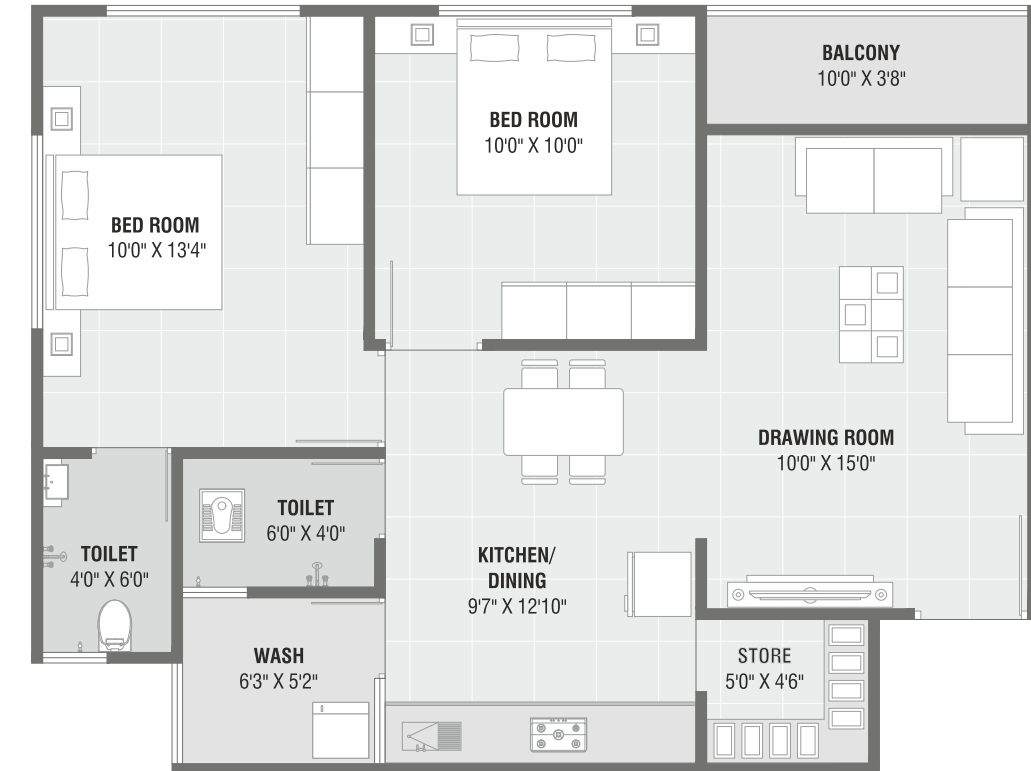




BLOCK **B&C**  
**3 BHK** FLOOR PLAN



BLOCK **A&D**  
**2 BHK** FLOOR PLAN



BLOCK **B&C**  
**3 BHK** FLOOR PLAN







*Homes*

TO AN EXOTIC LIFESTYLE



**14** FLOORS

BREATH IN FRESH AIR &  
FEEL THE BLISS IN EVERY CORNER







### LOCATION ADVANTAGE CONNECTIVITY

- S.P. RING ROAD  
5 MIN
- BRTS BUS STAND  
2 MIN
- D MART  
5 MIN
- ZEE MOUNT  
LITERA SCHOOL  
10 MIN
- METRO STATION  
15 MIN
- SHALBY HOSPITAL  
5 MIN
- RAILWAY STATION  
25 MIN
- AIRPORT  
20 MIN



# 25+ MODERN AMENITIES

- 3 LEVEL  
PARKING
- DECORATIVE  
ENTRY GATE
- 2 AUTO LIFTS  
PER BLOCK
- SOLAR PANEL  
(FOR COMMON LIGHT)
- ADANI  
GAS LINE
- SOCIETY  
OFFICE
- ENTRANCE  
FOYER
- POWER BACKUP  
D.G. SET
- SECURITY  
CABIN
- ELECTRIC  
METER PANEL
- PUMP  
ROOM
- COMMON  
WASHROOMS
- GARDEN  
SEATING AREA
- GAZEBO  
SITTING
- FIRE FIGHTING  
& SPRINKLER
- GREEN  
PLANTATION
- CHILDREN  
PLAY AREA
- 24 hrs.  
WATER SUPPLY
- PRESSURE  
PUMP SYSTEM
- COMMON BORE,  
WATER TANK
- STREET  
LIGHT
- CCTV &  
SURVEILLANCE
- 24 Hrs.  
SECURITY
- LETTER  
BOXES
- WATER  
METER

## SPECIFICATIONS

- Structure : Earthquake resistance RCC Frame structure.
- Plaster : Smooth finish mala plaster on inside walls and double coat sand face plaster and acrylic texture on exterior
- Flooring : Premium brand vitrified tiles in all areas, lintel level premium brand GVT tiles in bathrooms and kitchen. Water proofing in all bathrooms
- Terrace : China mosaic flooring with water proofing, for heat and leakage protection
- Kitchen : Granite platform with SS Sink, with GVT tiles up to lintel level with gas stove point
- Bathrooms and toilets : Branded sanitary ware and CP fittings, with anti-skid tiles on floor and wall tiles up to lintel level. Geyser point in all bathrooms.
- Plumbing : Premium brand CPVC and UPVC & SWR pipes for water supply, drainage and solid waste systems.
- Doors and Windows : Decorative laminated main door and all other flush doors. Aluminum section windows with granite framing
- Electrification : Concealed single phase wiring with adequate electrical points in all areas, with ISI copper wire and premium brand modular electrical accessories. Distribution panel with MCB, ELCB & RCCB. AC point in master bedroom.

