

An ideal Space



SHASHWAT
seven
— Redefine urban life —



An ideal Luxury

3&4 bhk elite living



Luxury is personal

An entirely different look to your tantalizing life - feel what your home delivers.
external happiness, live Shashwat seven style



SHASHWAT seven

— Redefine urban life —



Breeze in the forest spreads
evergreen bliss

Experience the beautiful abodes that breath the
perfect luxurious lifestyle



Club House



Gymnasium



Indoor Games



Banquet Hall



Children Play Area

Amenities



SHASHIWAT
seven
— Redefine urban life —



ENTRANCE PLAZA



SECURITY CABIN & DROP OFF ZONE



CCTV CAMERA



LAWN



CHILDREN'S PLAY AREA



INDOOR GAMES



TODDLER PLAY AREA



BILLIARD GAME



YOGA ROOM



GYMNASIUM



MINI THEATRE



LIBRARY



AUTOMATIC ELEVATOR



WELL EQUIPPED FIRE HYDRANT SYSTEM



WATER BODY



MULTY PURPOSE COURT



SWIMMING POOL



BANQUET HALL



COVERED SEATING AREA



LOUNGE SEATING AREA



24 HRS WATER SUPPLY



JOGGING TRACK



ALLOTTED CAR PARKING



BASEMENT PARKING



Ground Floor Plan



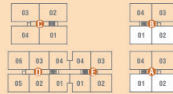
Typical
Floor Plan (1st to 5th)



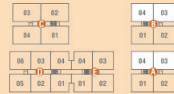
Basement
Floor Plan



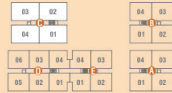
3 bhk Unit plan



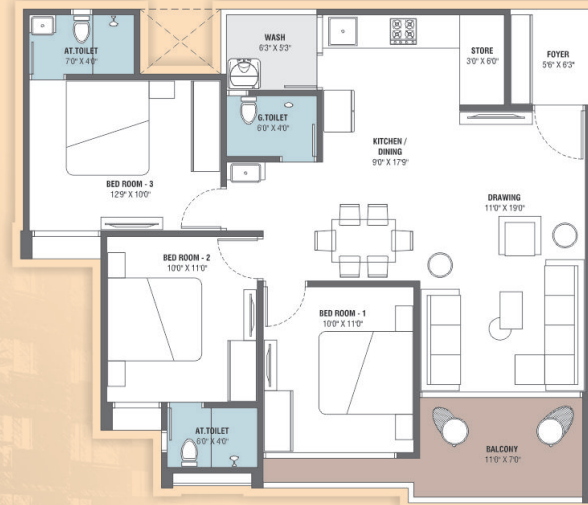
3 bhk Unit plan



4 bhk Unit plan



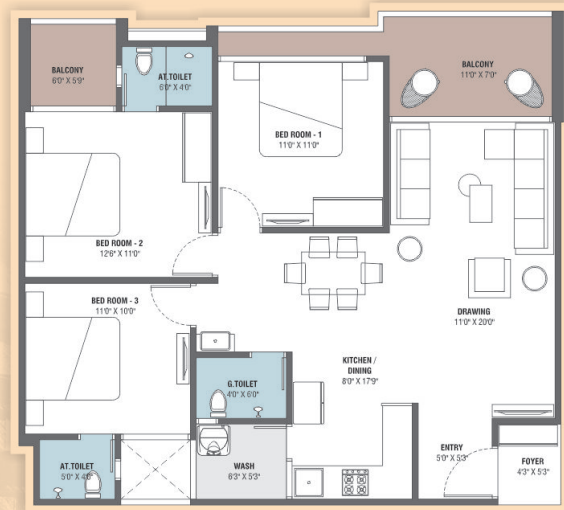
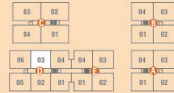
3 bhk Unit plan



3 bhk Unit plan

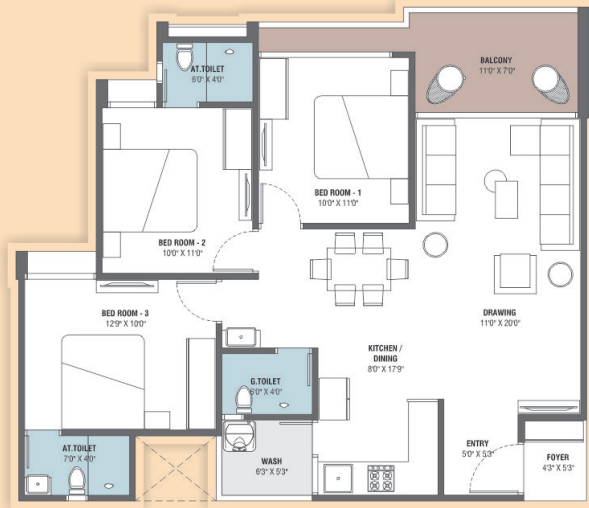


3 bhk Unit plan



3 bhk Unit plan

03	02			04	03
04	01			01	02
06	05	04	04	03	02
05	02	01	01	02	01



3 bhk Unit plan

03	02			04	03
04	01			01	02
06	05	04	04	03	02
05	02	01	01	02	01



3 bhk Unit plan



SHASHIWAT
seven
— Redefine urban life —

Specification



STRUCTURE

- Earthquake resistant R.C.C. framed structure.



FLOORING

- Premium quality vitrified tiles in flooring.
- China mosaic flooring in terrace.



DOORS & WINDOWS

- Decorative main entrance door with Veneer / Laminate finish with wooden framing.
- Other doors are flush door with wooden / granite framing.
- Premium quality aluminum windows.



KITCHEN

- Mirror polished granite platform with premium quality sink.
- Designer glazed tiles up to lintel level.



BATHROOM & PLUMBING

- Premium quality CP Fittings and sanitary ware.
- Electric geyser point and exhaust fan point provision in all bathrooms.
- Designer glazed tiles up to lintel level.
- Premium quality UPVC - CPVC pipes for water supply.



ELECTRIFICATION

- Single or 3 phase concealed ISI copper wiring with premium switches.
- ELCB / MCB with internal distribution board.
- Provision for AC point and TV cable.



WALL FINISHES

- Inside wall mala plaster with putty finish.
- External wall double coat plaster with acrylic paint.



WASH AREA

- Kota stone flooring and dado glaze tiles.
- Electric and plumbing point for washing machine.



ELEVATORS

- Premium quality high speed elevator.





SHASHWAT seven

— Redefine urban life —

: SITE ADDRESS :
SHASHWAT SEVEN,
 Opp. Arcadia 64, C-Link Road, Radhanpur Road, Mehsana - 2

: CONTACT :
+91 98245 40892

: ARCHITECT :
EYCON ARCHITECT
 Prajesh Patel

NOTES : • All Government legal charges, Stamp duty, common maintenance charges, GEI charges, Gas connection, GST etc taxes shall be borne extra by the members. • In case of cancellation of unit 10% of payment received will be deducted as a management services charges and balance amount will be returned only after the resale of the unit. • No external changes shall be allowed. Only internal changes will be allowed with prior permission and it will be charged extra in advance. • Dimensions and area mentioned in the brochure are approximate and indicative. • This brochure is not a part of legal documents. It is only for information and private circulation. • All rights are reserved by the developers to make any changes in the plan, elevation, specification and future additional development in surrounding area in the scheme and shall be binding to all the members. • Subject to Mehsana jurisdiction



PROJECT BY :



**SHASHWAT
GROUP**

DEVELOPED BY :

SHIVALIK DEVELOPERS

SITE ADDRESS :

 **SHASHWAT SEVEN,**
Opp. Arcadia 64, C-Link Road, Radhanpur Road,
Mehsana - 2

 **CONTACT : +91 98245 40892**