

*A Peak into Your Perfect Lifestyle*



SHIKHAR LANDMARK, TP - 69, FP - 286, Near Bhagwati Farm,  
Beside Apollo International School, Tragad, Ahmedabad-382470

+91 99799 82514

REG. RERA NO.

PR/GJ/AHMEDABAD/AHMEDABAD CITY/Ahmedabad Municipal Corporation/MAA13312/120424/310528





**SHIKHAR LANDMARK**  
Where Design Embraces the  
Latest Concepts and Ideas







“

Elevate your living spaces at  
**SHIKHAR LANDMARK**,  
enriching lifestyles with distinction

”







“Where  
Every Home  
is a Signature  
Landmark”

**SHIKHAR  
LANDMARK**  
3 & 2 BHK LIVING SPACE







“ Real Estate with Unmatched Elegance and Panoramic Views ”



  
**SHIKHAR  
LANDMARK**  
3 & 2 BHK LIVING SPACE





“

Creating a Distinctive Living Experience that Stand Apart

”



  
**SHIKHAR  
LANDMARK**  
3 & 2 BHK LIVING SPACE



# GROUND FLOOR



## LAYOUT PLAN

1. ENTRANCE GATE
2. SECURITY CABIN
3. DROP OFF ZONE
4. INDOOR GAMES
5. MULTI PURPOSE HALL
6. KITCHEN & WASH AREA
7. GYMNASIUM
8. SOCIETY OFFICE
9. TODDLER PLAY AREA
10. CHILDREN PLAY AREA
11. AROMA SENIOR CITIZEN SEATING
12. SWING SEATING
13. COVERED GAZEBO
14. OUTDOOR EXERCISE AREA
15. PARTY LAWN
16. JOGGING TRACK
17. GARDEN SEATING
18. NO VEHICULAR ZONE
19. BADMINTON NET
20. ENTRANCE FOYER WITH WAITING AREA
21. AUTOMATIC BOOM BARRIER GATE SYSTEM
22. 2 LIFT WITH POWER BACK UP
23. ELECTRICITY BACK UP
24. CCTV CAMERA
25. CABLE TV WIRING
26. SOLAR SYSTEM FOR COMMON AMENITIES
27. FIRE SAFETY SYSTEM
28. FREE WIFI ZONE





# FIRST FLOOR

## LAYOUT PLAN



# TYPICAL FLOOR

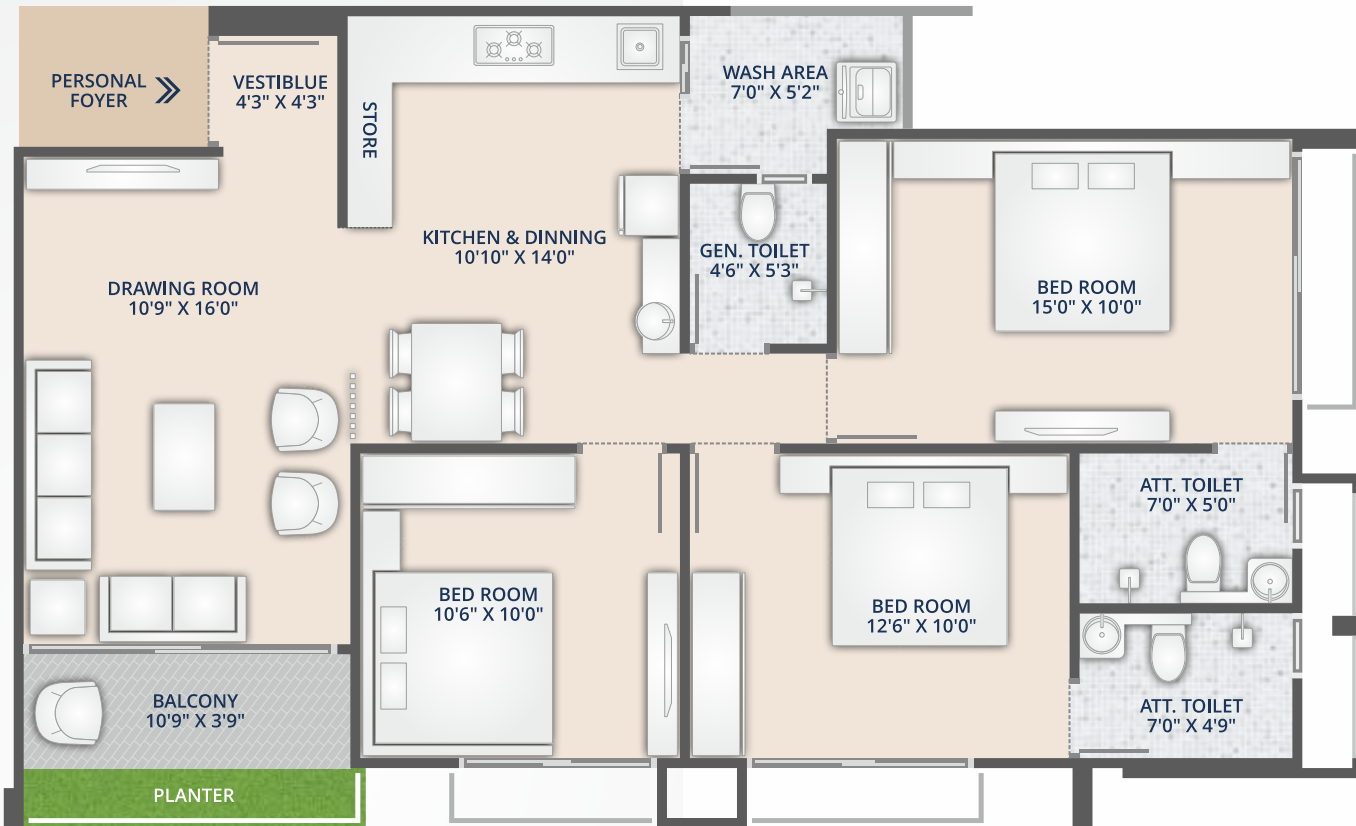
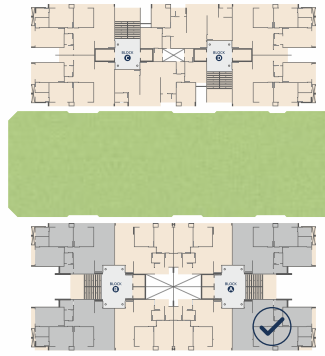
## LAYOUT PLAN





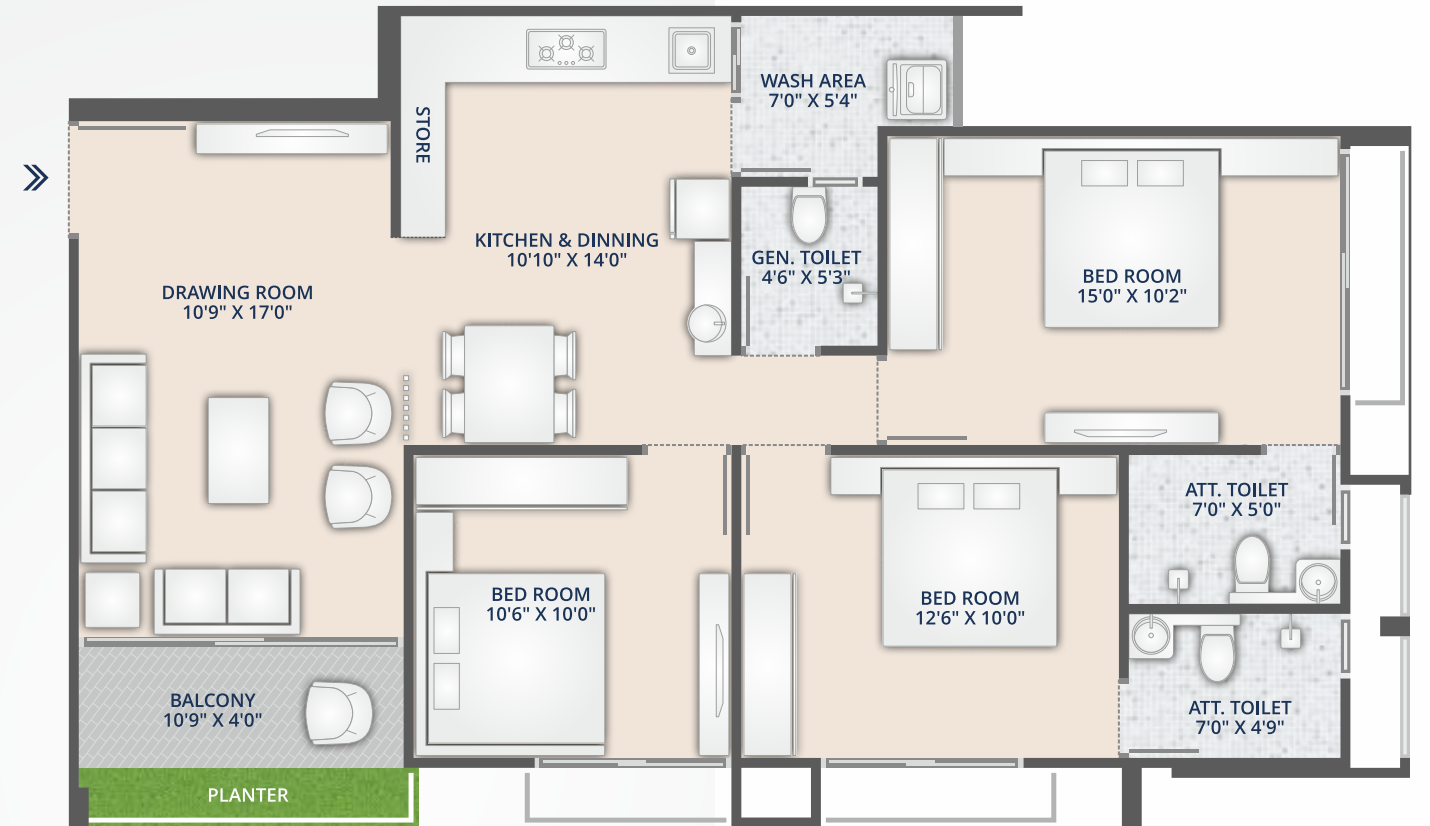
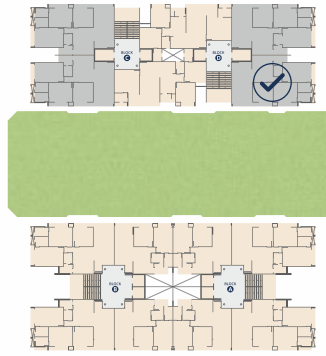
# 3 BHK UNIT PLAN

TYPE - A



# 3 BHK UNIT PLAN

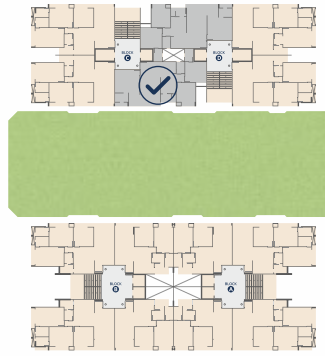
TYPE - B





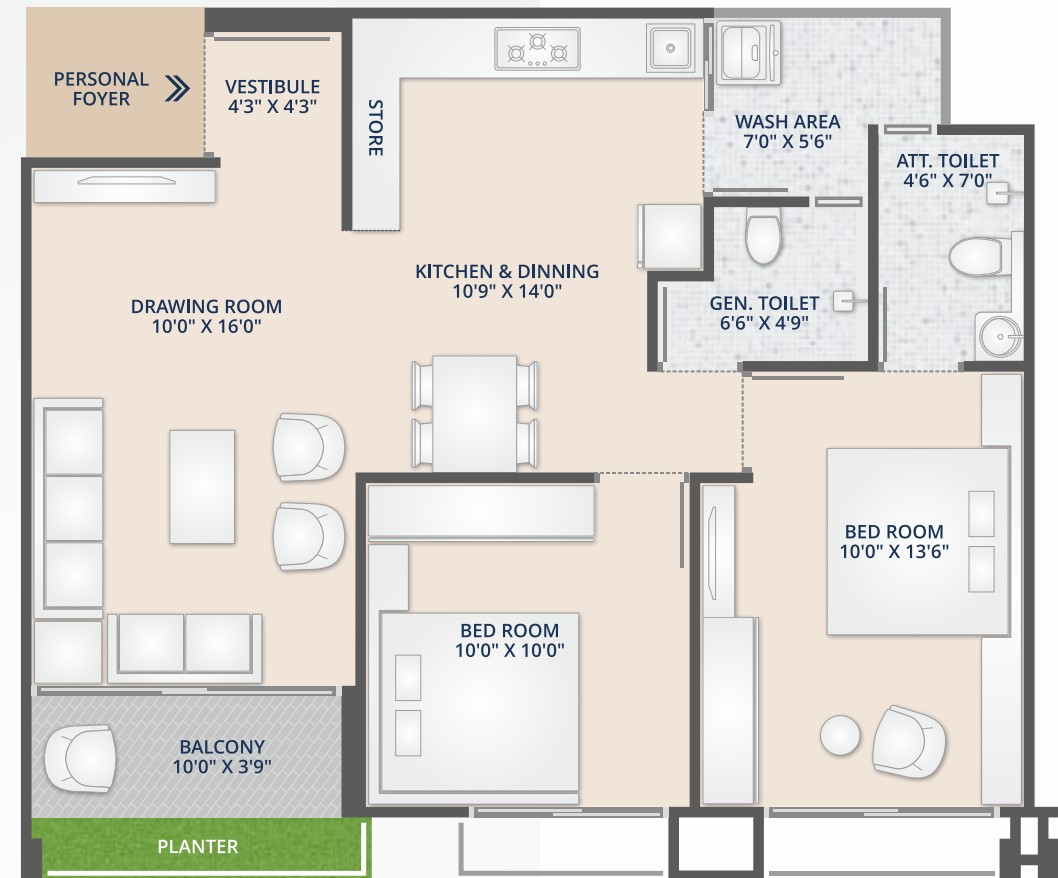
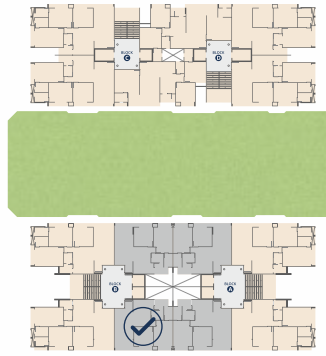
# 3 BHK UNIT PLAN

TYPE - C



# 2 BHK UNIT PLAN

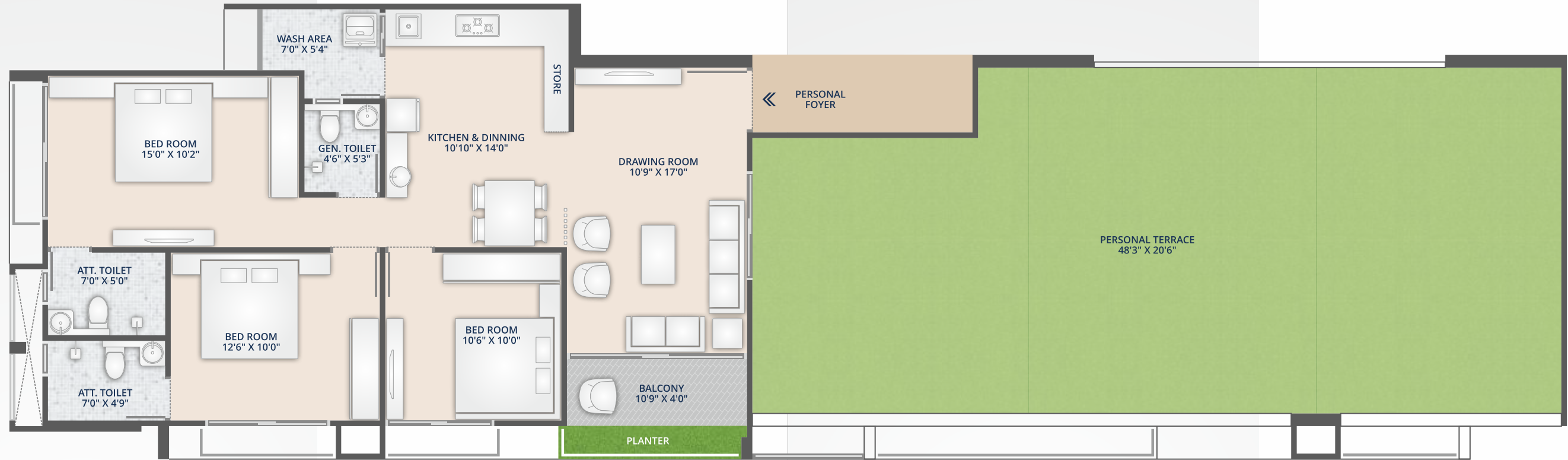
TYPE - D





# 3 BHK UNIT PLAN

## D - 1002 PENT HOUSE PLAN



# 3 BHK UNIT PLAN

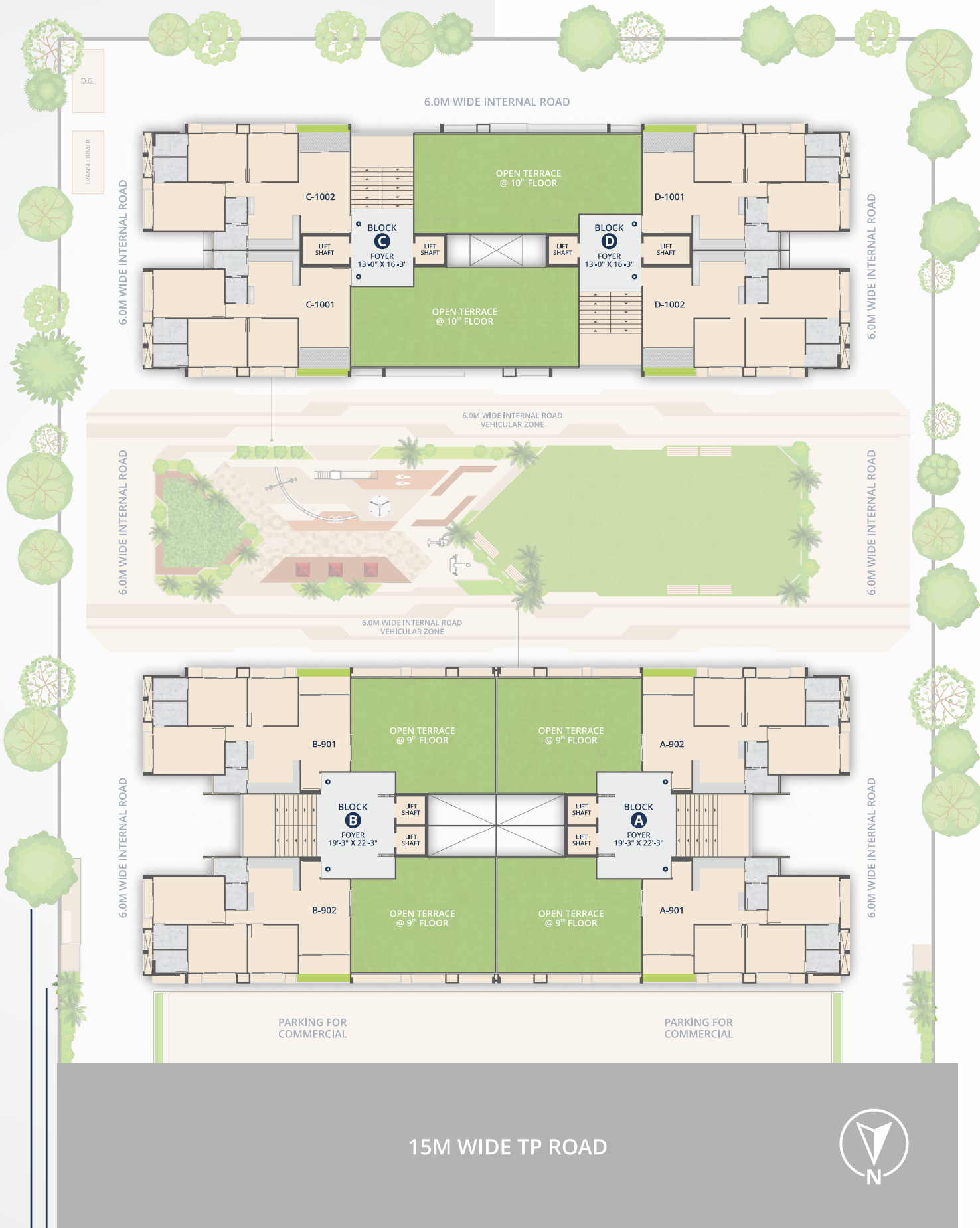
## A - 902 PENT HOUSE PLAN





# TERRACE FLOOR

## LAYOUT PLAN



# SPECIFICATION



## FLOORING

Vitrified Tiles in all rooms  
Vitrified / Rustic Tiles in Balcony



## KITCHEN & WASH YARD

Granite Platform with Dado of Ceramic Tiles up to Lintel Level  
Stainless Steel Sink  
Vitrified Tiles in Floor



## TOILET-FLOORING / DEDO

Ceramic Tiles in Flooring  
Ceramic Tiles up to Lintel Level



## ELECTRIFICATION

Concealed Copper Wiring with Adequate Number of Points with ISI Wires and Modular Switches with MCB/ELCB



## DOOR

Main Door – Wooden Flush Door With One Side Veneer  
Internal Doors – Flush Doors/ Panelled Door with Laminate



## WINDOW

Fully Glazed Powder Coated Aluminium Windows with Granite Sill



## WALL FINISH

Exterior Double Coat Sandface / Texture Finish  
Single Coat Mala Finish Inside



## PAINTING

Putty Finish Inside  
Acrylic Paint Outside



## PLUMBING FIXTURES

Chrome plated “jaquar” make fixtures



## SANITARY WARE

“CERA” make Water Closet  
“CERA” make wash basin



## ELEVATOR

Premium Quality Elevator with Automatic Door



## TERRACE

Brickbat Coba Waterproofing with China Mosaic



## AMENITIES



SECURITY CABIN & DROP OFF ZONE



GYMNASIUM



CHILDREN PLAY AREA



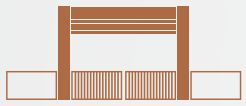
INDOOR GAMES



LANDSCAPE GARDEN



MULTIPURPOSE HALL



ATTRACTIVE ENTRANCE GATE



SENIOR CITIZEN SEATING



INTERNAL PAVED AREA



CCTV CAMERA

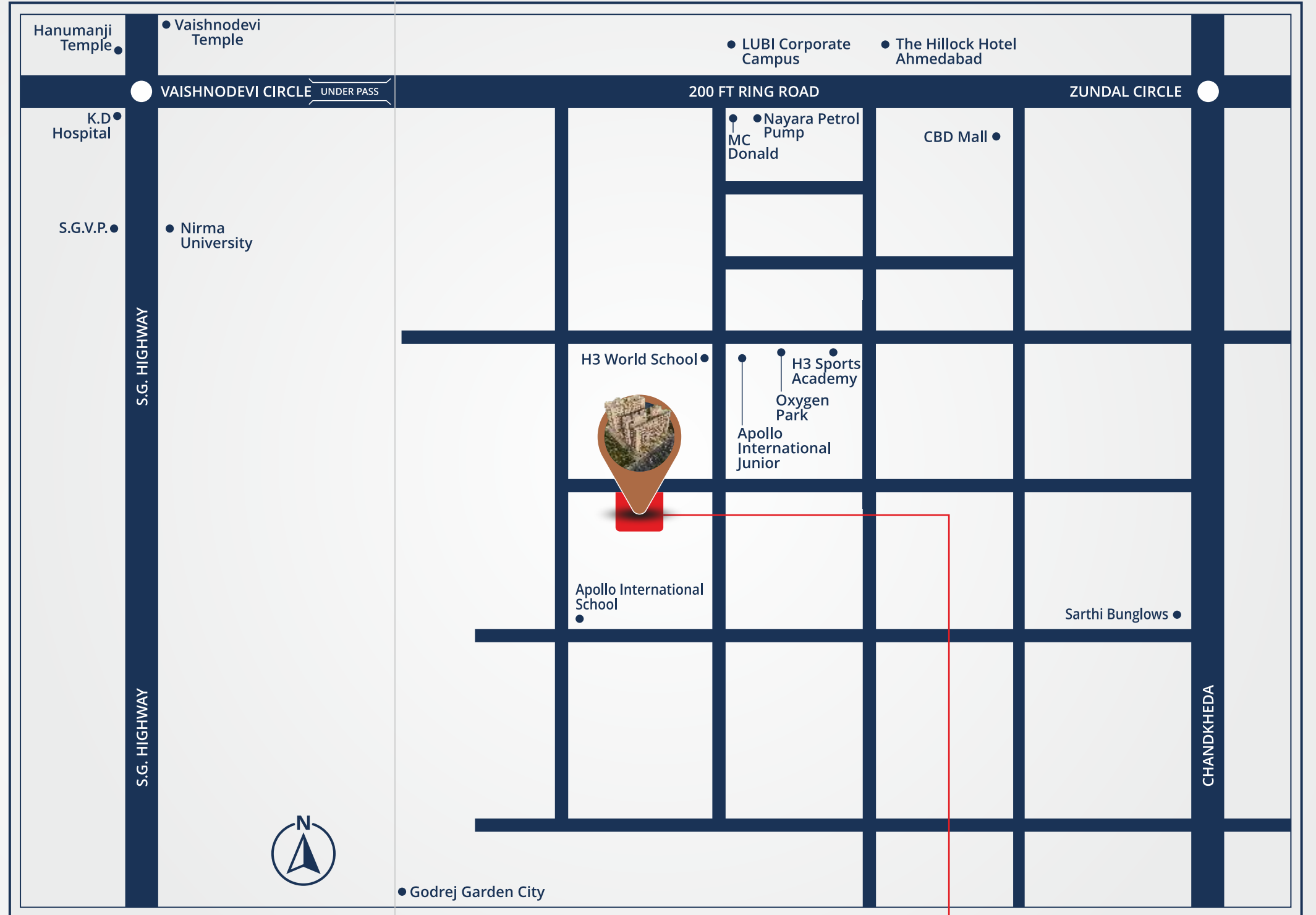


TWO ELEVATORS IN EVERY BLOCK



AMPLE PARKING

## KEY PLAN



## NEAREST PLACES

**3 MIN.** S.P. RING ROAD

**5 MIN.** FOOD AND HOTEL

**8 MIN.** S.G. HIGHWAY

**5 MIN.** MALL AND MOVIE

**8 MIN.** 24X7 HOSPITAL

**19 MIN.** RAILWAY STATION

**25 MIN.** INTERNATIONAL AIRPORT

ARCHITECT  
**URBAN SENSE**  
ARCHITECTS

STRUCTURE  
**MARUTI CONSULTANTS**

MEPF  
**DELTA ASSOCIATE**

**SHIKHAR LANDMARK**  
3 & 2 BHK LIVING SPACE

### DISCLAIMER

- The brochure is for the easy presentation of the Project. It should not be considered as a part of the legal documents. For further information regarding the Project the Member / customer is requested to check the details on RERA website or at the Developer's office before going ahead with the booking.
- The furniture and fixtures, electrical appliances and other loose items shown in the brochure are only for illustrative purposes and do not form a part of the standard product on sale. The furniture layout shown in the brochure is only suggestive and subject to change as per site conditions and as per the instructions of the Project Architect.
- The Promoter/Developer reserves the right to make changes in the Project, its amenities and specifications as may be suggested by the Project Architect or the Structure consultant and any such changes made shall be binding on the customers/members of the Project.
- The Promoter/Developer reserves the right to make minor on-site changes during the course of construction and such changes shall be binding on all the members/customers of the Project
- The dimensions shown in the brochure are approximate and calculated from unfinished surfaces and are rounded off to nearest whole number.
- The images (interior and exterior views) in the brochure are computer stimulated graphics for representational purpose and are subject to errors and omissions. The images used may be stock images or images based on the architectural plans of the Project. They shall not be construed as actual depictions of the Project.
- The north direction shown in the brochure is approximate and can be erroneous. The Member / Customer is expected to verify the same personally before going ahead with the booking.
- The Key Plan in the Brochure is not to scale and does not depict the exact location of the Project or the connecting road network or other abutting structures or landmarks. It is only for representation purpose and gives a rough idea about the approximate location of the Project. The Member/Customer is requested to visit the Project site and check the physical location of the Project and its surroundings before going ahead with the booking.

