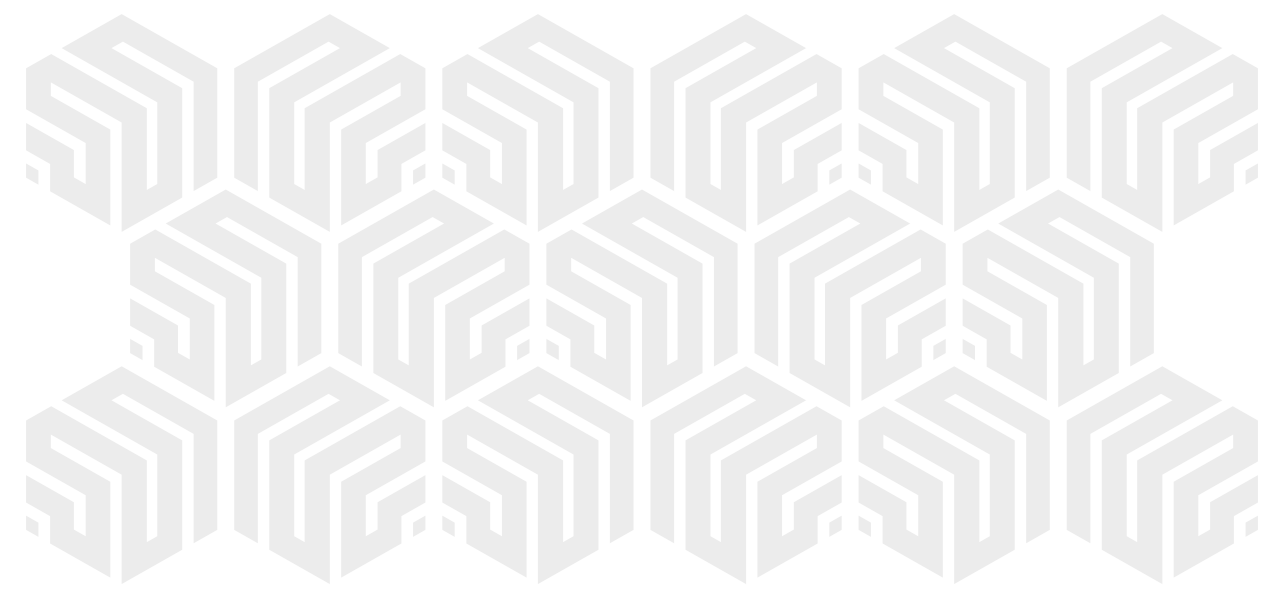



Shyam *विलास*
2 BHK FLATS & SHOPS



SITE ADDRESS :

3P33+WV, Kathwada-Singarva Rd, Kathwada, Gujarat 382430 | **CONTACT :** +91 99251 09233



WELCOME TO THE HIGH LIFE

Why have expectations that are sky low, when you're on a high sphere?

Life that elevates you at all levels is the life that we all work towards and dream of. With features and amenities that are singularly unique is purpose and ease of life; SHYAM VIHAR gives you that exhilarating feeling of living the life that you dreamt.

A life heightened with pure bliss !

 **Shyam** *विहार*
2 BHK FLATS & SHOPS

Unique
IDENTITY
For your
ADDRESS



The URBAN LIVING

Imagine living at a prime location yet away from the chaos and traffic amidst pristine greens and waking-up to the views of a serene lake. That is what SHYAM VIHAR brings to you – a Beautiful Life nestled in nature, promising a lifetime of awe-inspiring views.



On one side of SHIVAM VIHAR is the main approach road while on the other you get the views of the huge landscaped podium greens.

Imagine waking-up to such Majestic views every single day and breathing fresh air for a lifetime.

The MODERN LIVING

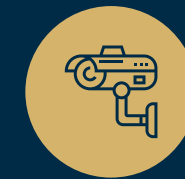




AMENITIES



SOLAR PANEL



CCTV CAMERA



AUTOMATIC LIFTS



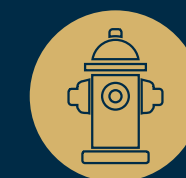
24 HRS. SECURITY



SECURITY CABIN WITH GATE



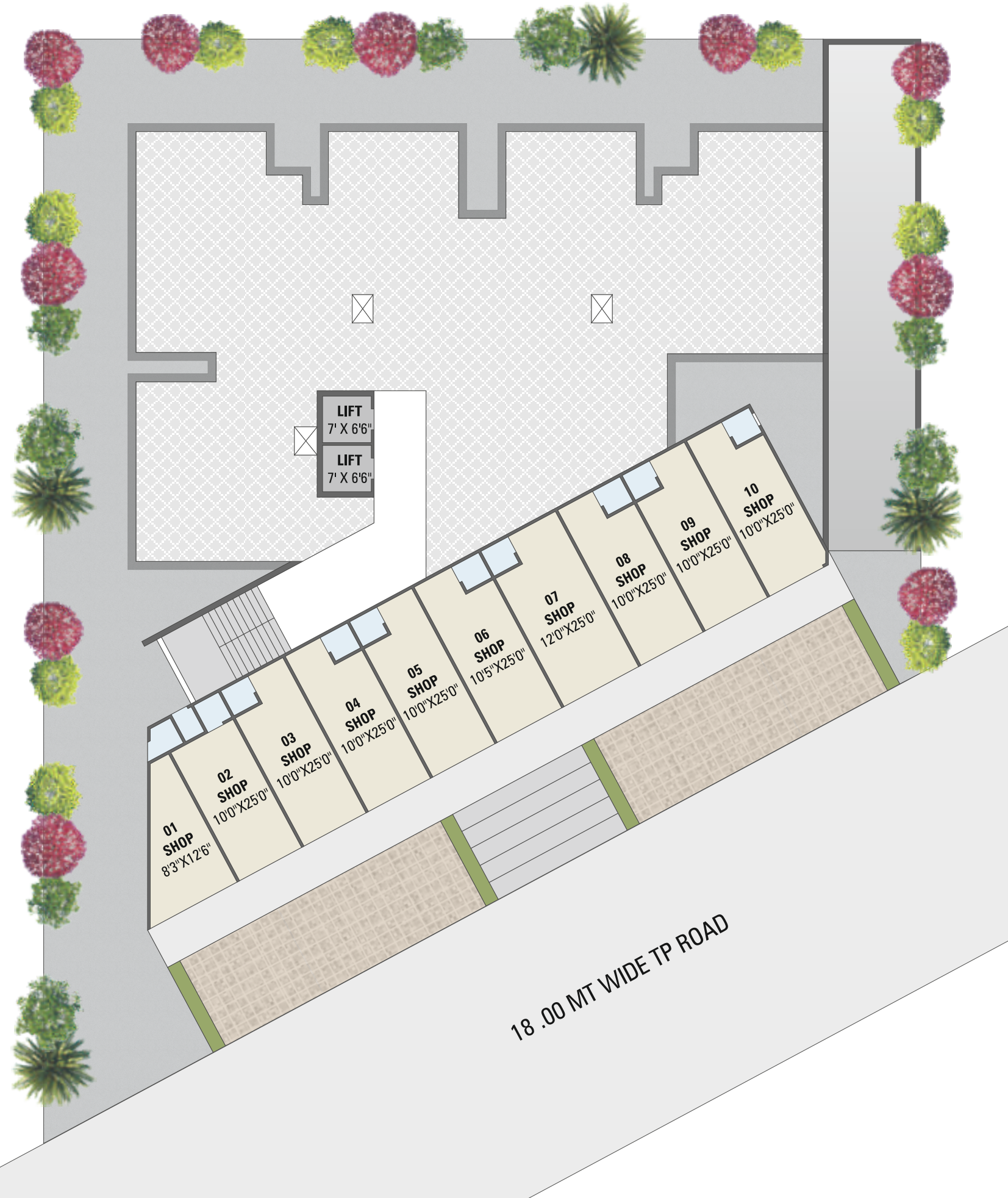
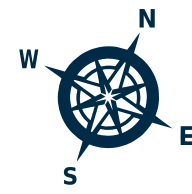
24 HOURS WATER SUPPLY



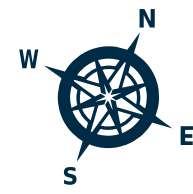
FIRE SYSTEM



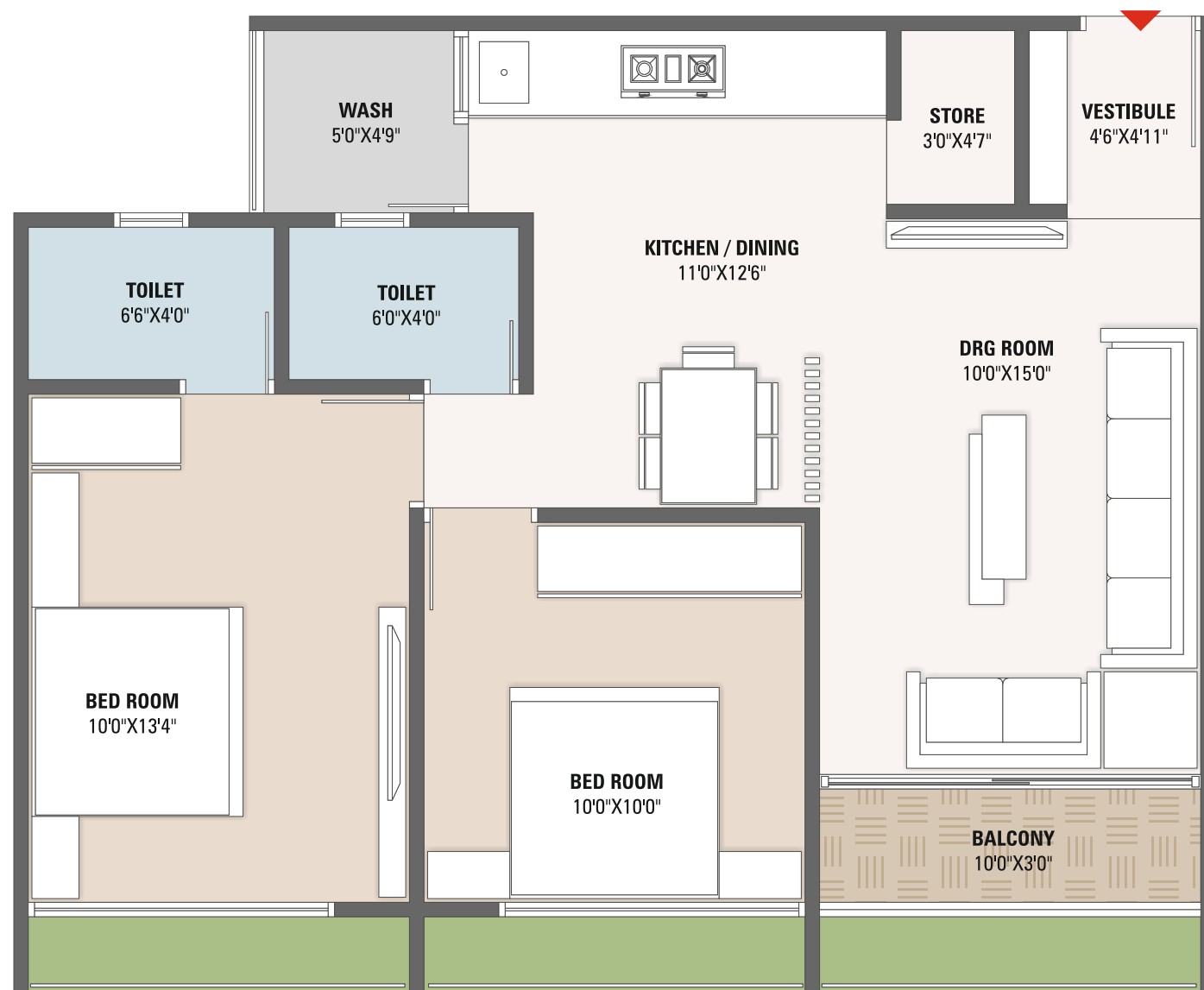
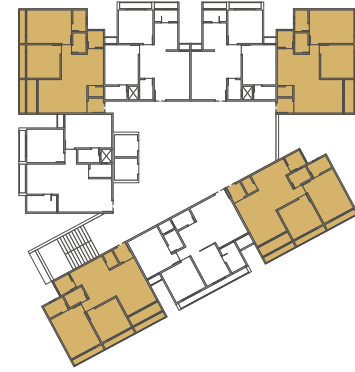
Ground Floor



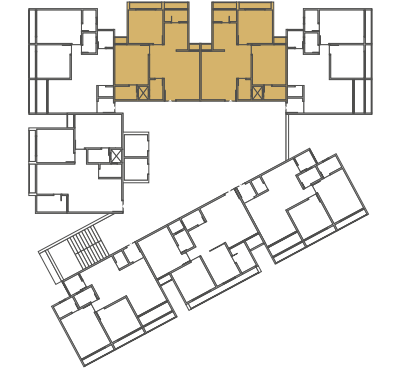
Typical Layout



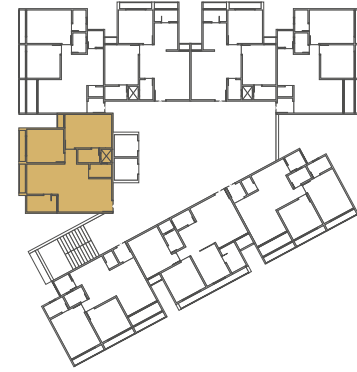
Unit Plan Type - 1



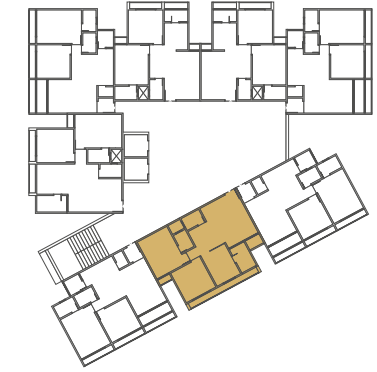
Unit Plan Type - 2



Unit Plan Type - 3



Unit Plan Type - 4







SPECIFICATION

 **STRUCTURE**
Earthquake resistance RCC frame structure work.


 **FLOORING**
Vitrified tiles flooring in entire flat.

 **KITCHEN**
Granite platform with S.S. sink & tiles dado up to lintel level in kitchen.

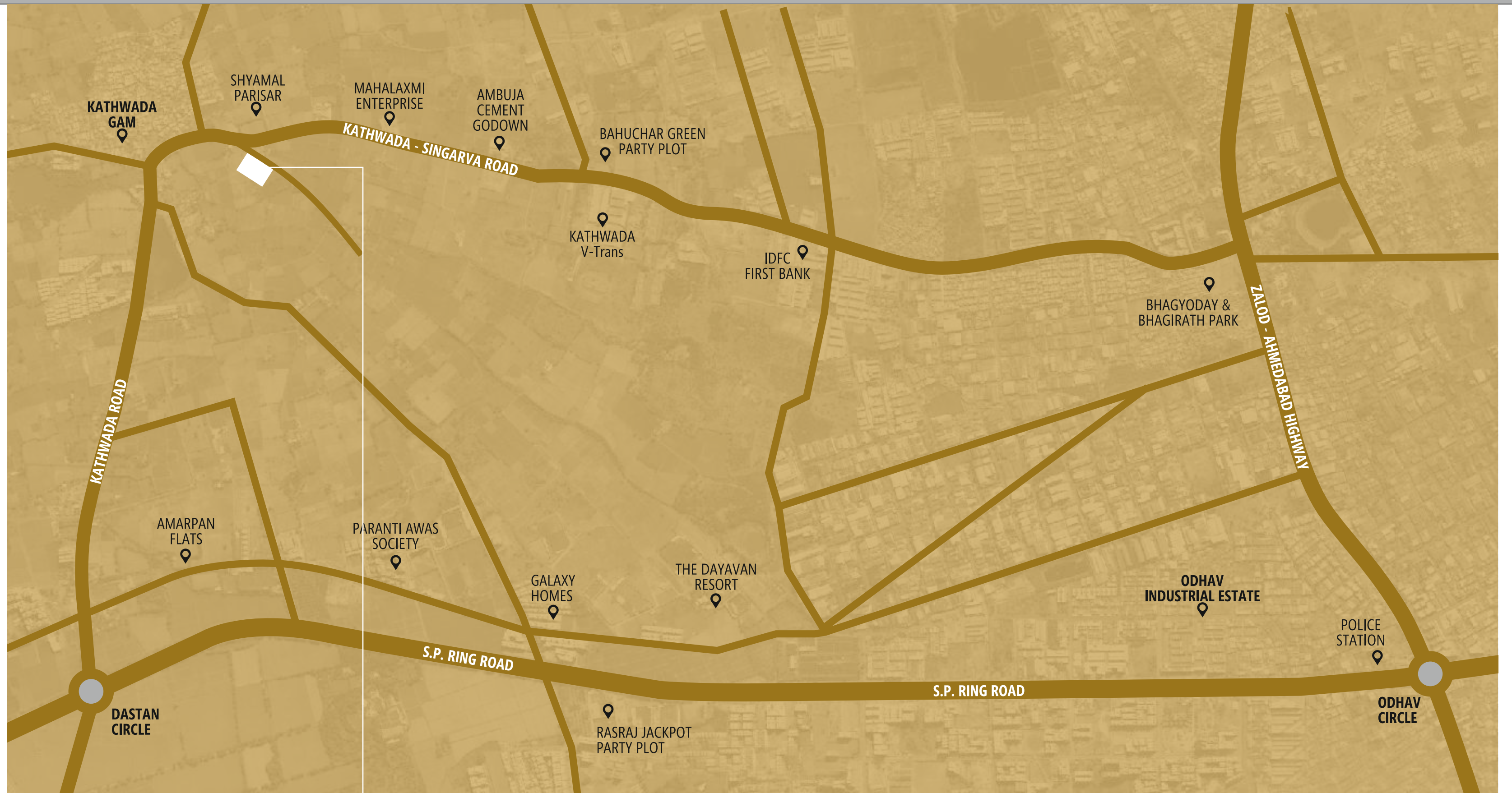
 **DOORS**
Decorative main door & other flush doors.

 **WINDOWS**
All windows in aluminum section with granite frame, standard quality window glass.

 **ELECTRIFICATION**
Concealed I.S.I. copper wiring with standard accessories .

 **WALL FINISH**
External double coat sand face plaster with acrylic paint Internal mala plaster with wall putty.

 **TERRACE**
China mosaic flooring with water proofing.



SCAN FOR LOCATION



SITE ADDRESS :
3P33+WV, Kathwada-Singarva Rd, Kathwada, Gujarat 382430

CONTACT : +91 99251 09233

DEVELOPER
SWASTIK
DEVELOPERS

ARCHITECT
SHAPERS360°