

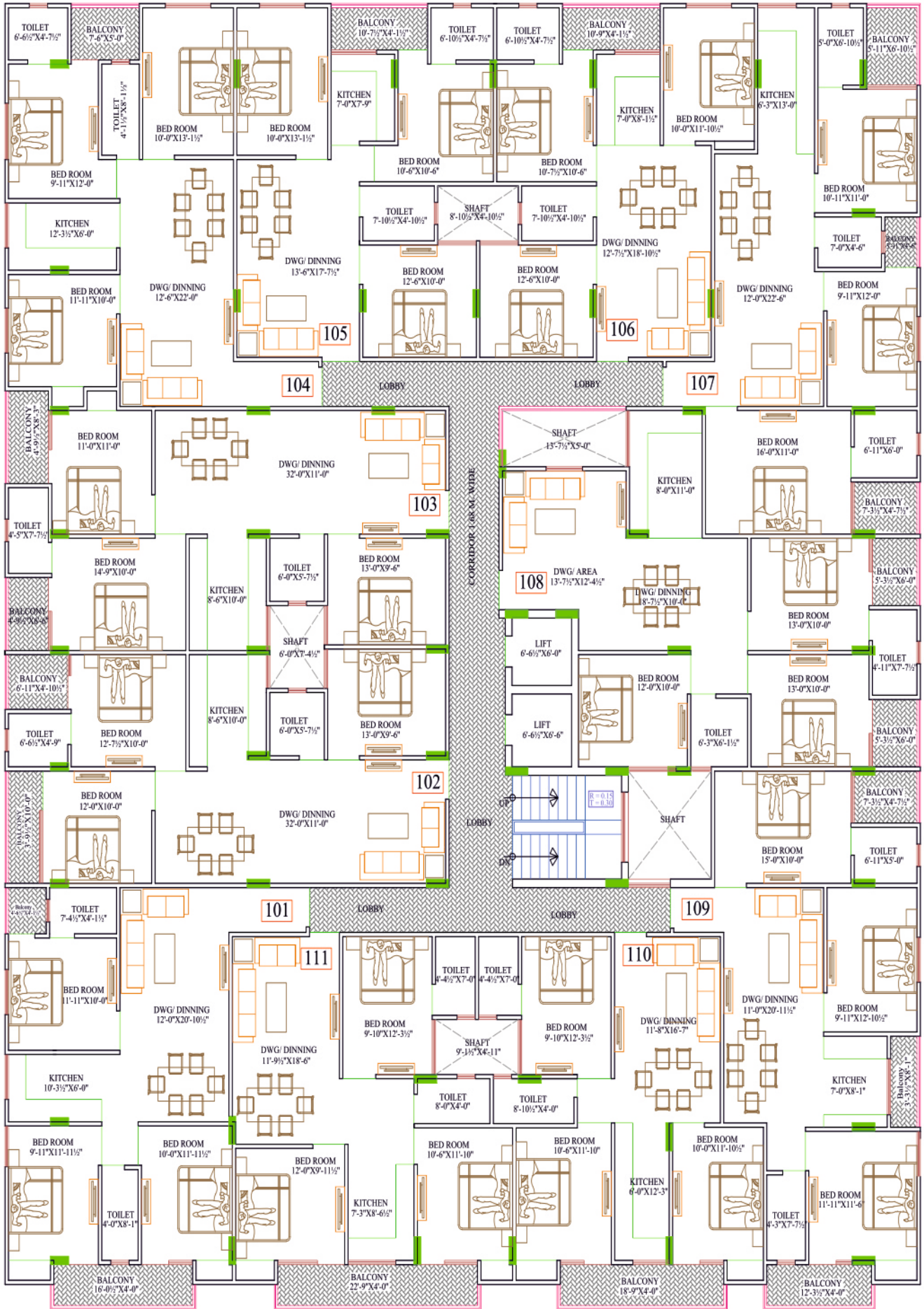
PARTH PALACE

3/4 BHK LUXURY APARTMENTS



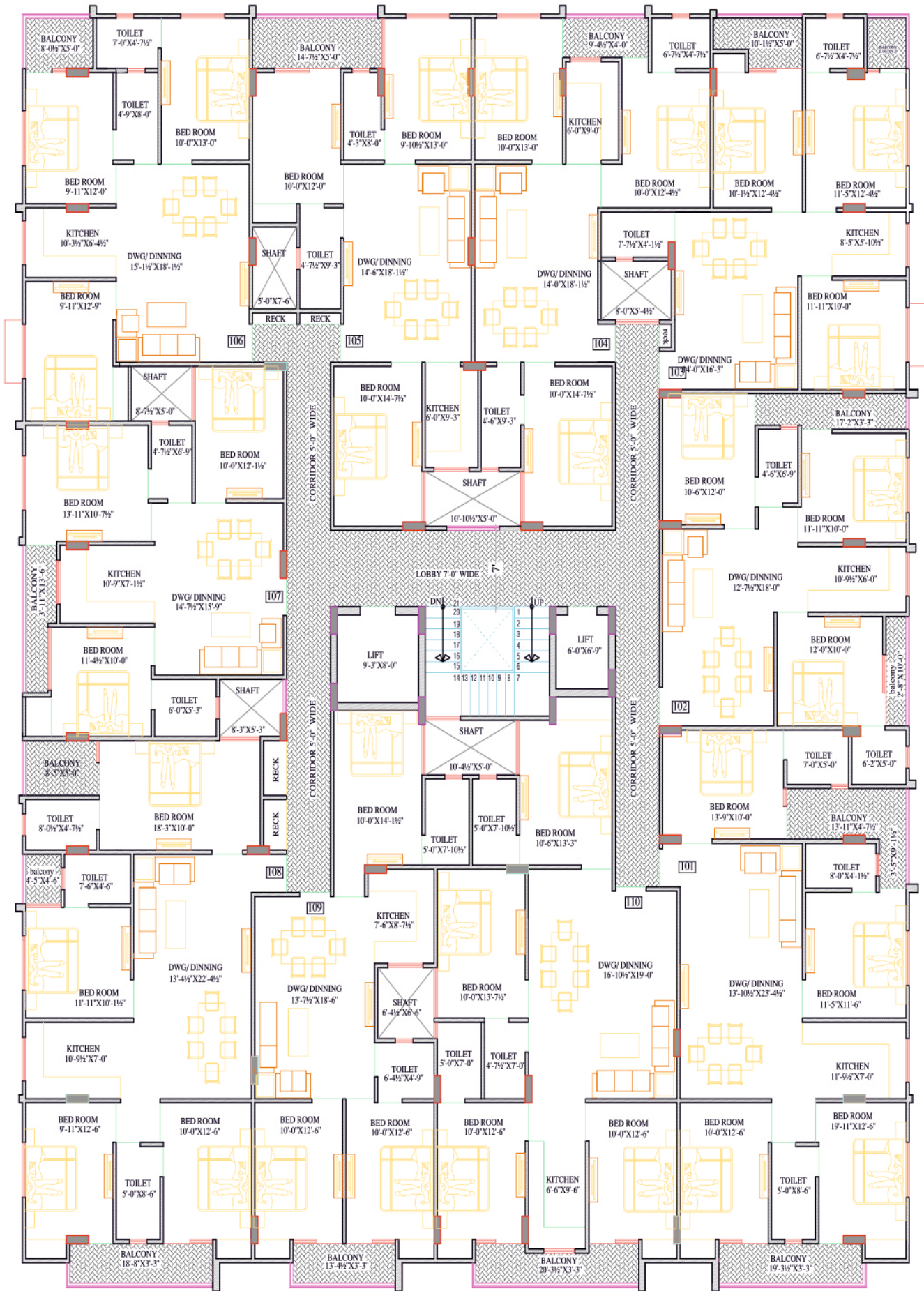
Plot No 1,2 ,3 Singhaniya Greens, Near LSKON Temple
Patrakar Colony, Mansarovar, Jaipur





GROUND FLOOR AREA PLAN

FLAT NO.	101	102	103	104	105	106	107	108	109	110	111
	3BHK	3BHK	3BHK	3BHK	3BHK	3BHK	3BHK	3BHK	3BHK	3BHK	3BHK
SALE AREA	= 1346.89	= 1407.85	= 1468.43	= 1322.31	= 1203.34	= 1168.41	= 1479.56	= 1444.22	= 1404.49	= 1214.66	= 1312.12



AREA IN SQ.FT/FLAT NO	101 4BHK	102 3BHK	103 3BHK	104 3BHK	105 3BHK	106 3BHK	107 3BHK	108 4BHK	109 3BHK	110 4BHK
SALE AREA	= 1851.68	= 1275.61	= 1257.45	= 1272.04	= 1307.36	= 1249.43	= 1230.95	= 1897.72	= 1274.00	= 1745.17

ABOUT THE LOCATION

- Near Iskcon Temple 0.5 KM
- Hyatt Residency Hotel 1 KM
- City Park Mansarovar 3.5 KM
- Dhanwantari Hospital 4 KM
- Airport 8 KM
- St. Anselm School 4.5 KM
- Sanganer Railway Station 7 KM
- Mansarovar Metro Station 7 KM

Main Attractions of the Project

- JDA And Rera Approved
- Gated Society
- Community Hall
- Multiple Hall
- Library
- Vastu Friendly
- Passenger & Cargo Lifts
- Senior Citizens Sitting Area
- Loanable From All Leading Banks
- Biometric Entry
- Excellent Interiors
- Power Backup
- Rain Water Harvesting
- Open Terrace Party Area
- Fire Fitting System
- CCTV Cameras



Society Temple



Theater Room



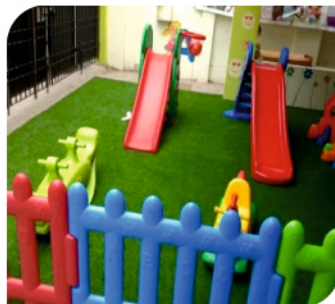
3 Tier Security



Yoga Deck



Gym



Indoor Games



Rooftop Garden



Society Office

Developed By :
PARTH SARTHI GROUP