

**A Project by
Shivam Developers**

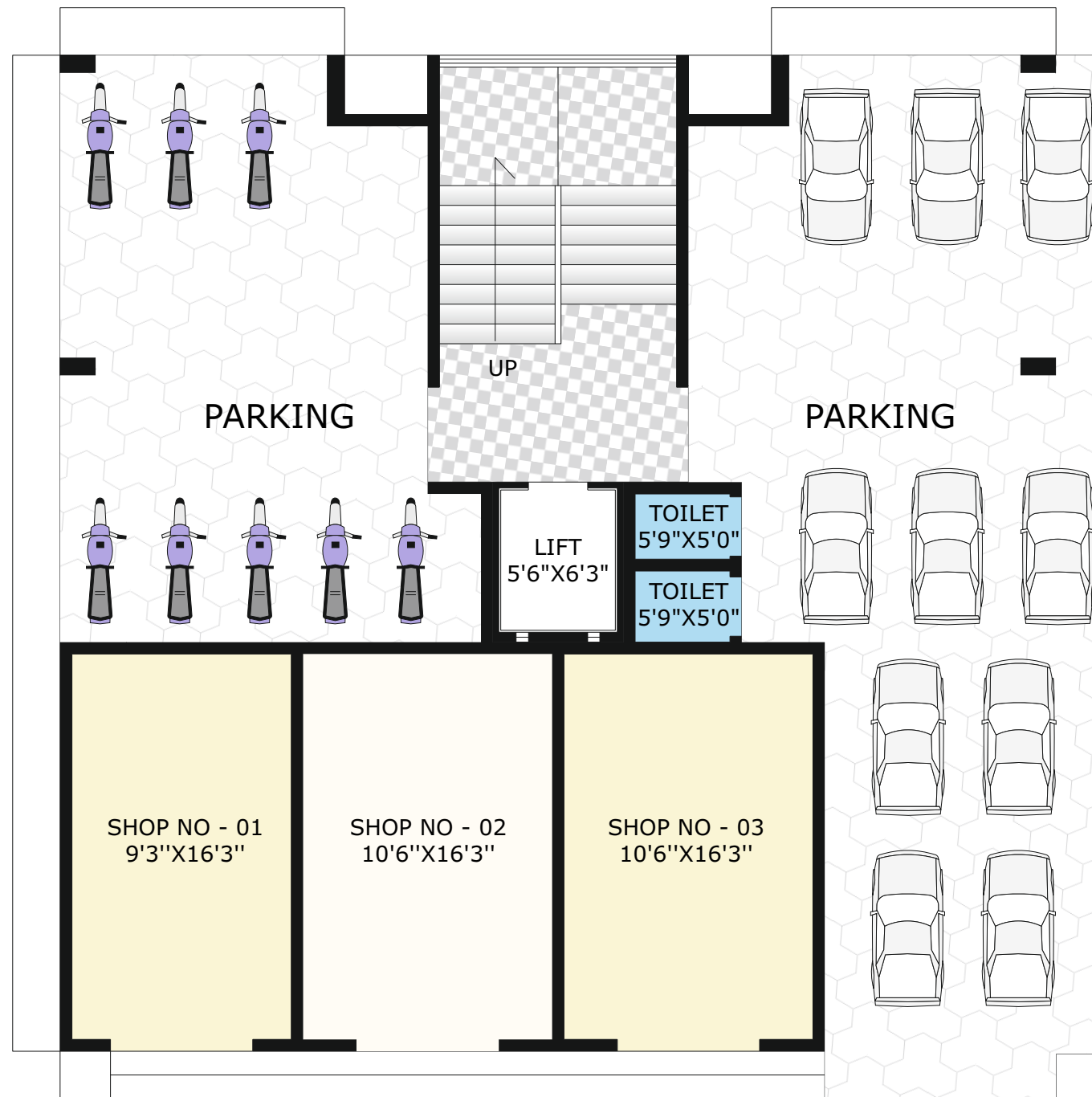


Royal Palace

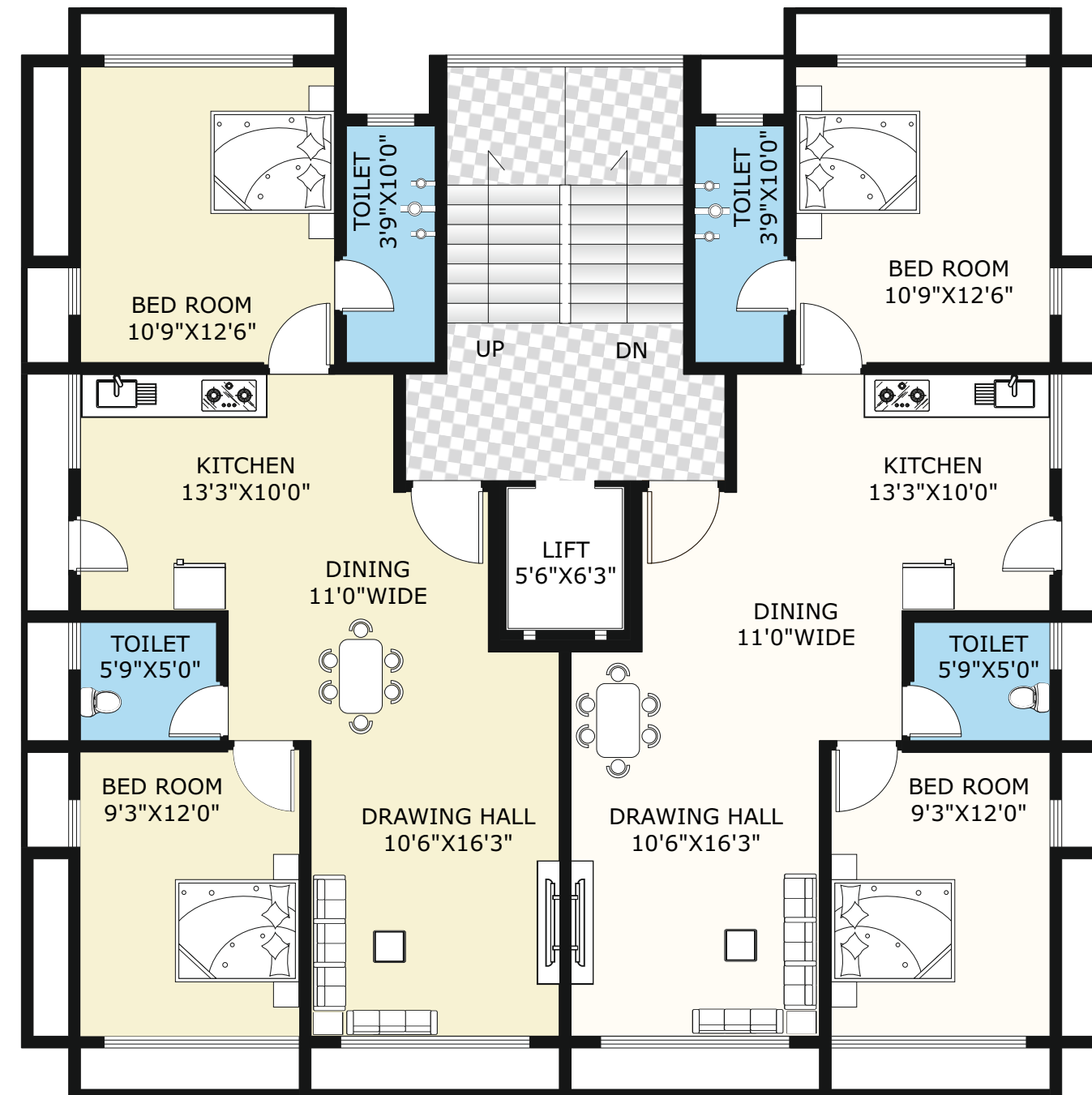
2 BHK Flats & Shops

A Moment Of Making A New Home

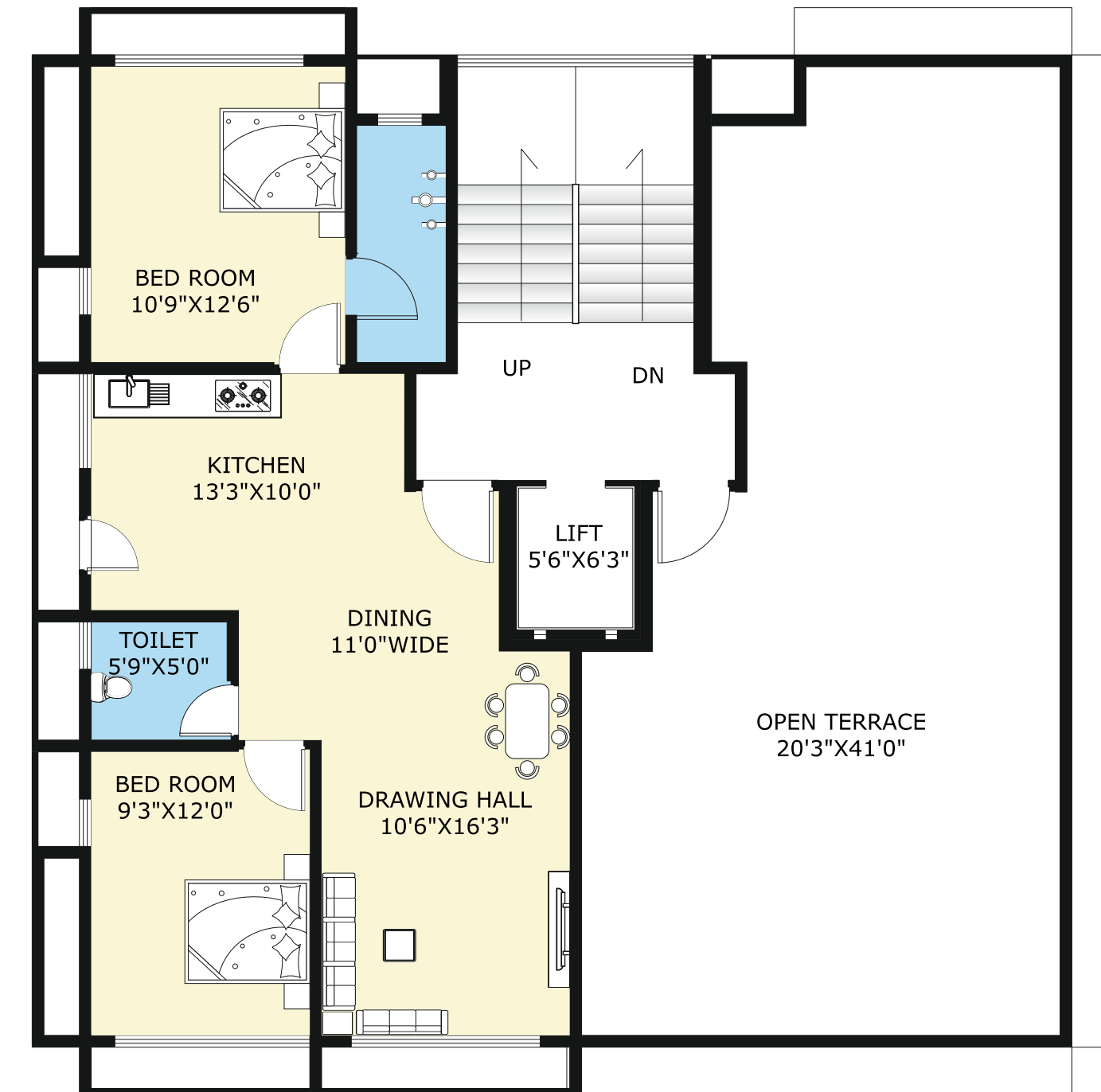
GROUND FLOOR PLAN



TYPICAL FLOOR PLAN 1st to 5th Floor



SIXTH FLOOR PLAN



AMENITIES



FLOORING
24" X 24" Vitrified Tiles For Hall, Kitchen, Dining And Bedroom. Designer Glazed Tiles Full In All Bathroom.



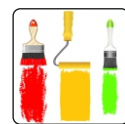
KITCHEN
Mirror Polished Granite Platform In Kitchen With Standard Quality S.S. Sink And Decorative Glazed Tiles up to Lintel Level above Platform



TOILET AND PLUMBING
Internal Concealed Plumbing By Astral PVC Pipe & Fittings.
Wall Tiles upto Lintel level & anti-skid flooring tiles in all toilets.



WINDOWS
Anodized Aluminum Section Sliding Windows With Mosquito Net In One Shutter. U PVC Windows



COLOR
Wall finished with putty work in Internal Walls and Apex Color Paint in External Walls.



ELECTRIFICATION
Concealed Copper Wiring (RR cable / Polycab) With MCB Switches & Excellent Quality(Anchor) Modular Switches, Sufficient Domestic Points In All Rooms.



DOOR
Decorative Laminated Waterproof Flush Main Door With Wooden Frame And Good Quality Fittings. Other Doors Also Laminated Waterproof Flush Door And Granite Frame.

NOTE

- Sale deed, Stamp duty, Registration charges, Legal Charges, GEB Charges, Society maintenance charges shall be borne by the purchaser.
- Any additional charges or duties levied by the Government / Local authorities during or after completion of the scheme like betterment charge (deposit) will be borne by the purchaser.
- In the interest of continual development in design & quality of construction, the developer reserve all rights to make any changes in the scheme including technical specifications, designs, planning, layout & all purchasers shall abide by such changes.
- Changes / alteration of any nature including elevation, exterior color scheme, balcony grill or any other changes affecting the overall design, concept & outlook of the scheme are strictly NOT PERMITTED during or after the completion of the scheme.
- Internal changes shall be done only with the prior permission and will be charged extra
- This brochure is intended only for easy display & information of the scheme & does not form part of the legal documents.
- Any new taxes announced by the government / Gram Panchayat / Nagar Palika / Authority will be borne by the buyer during the project



ZARA



umbro

H&M



Key Plan



Location Advantage

School - 2 Km

Shopping Mall - 1 Km

Hospital - 1.5 Km

Main Bazar - 3 Km

Railway Station - 3 Km

Daman Beach - 8 Km

Site Address



Royal Palace

2 BHK Flats & Shops

Chikoo wadi, Chala, Vapi

Designed By

Devyani Mistry

Legal Advisor

Dilip Sharma
Vapi

Booking Contact

Shivam Developers

Mob.: 98792 90049 / 98249 00002