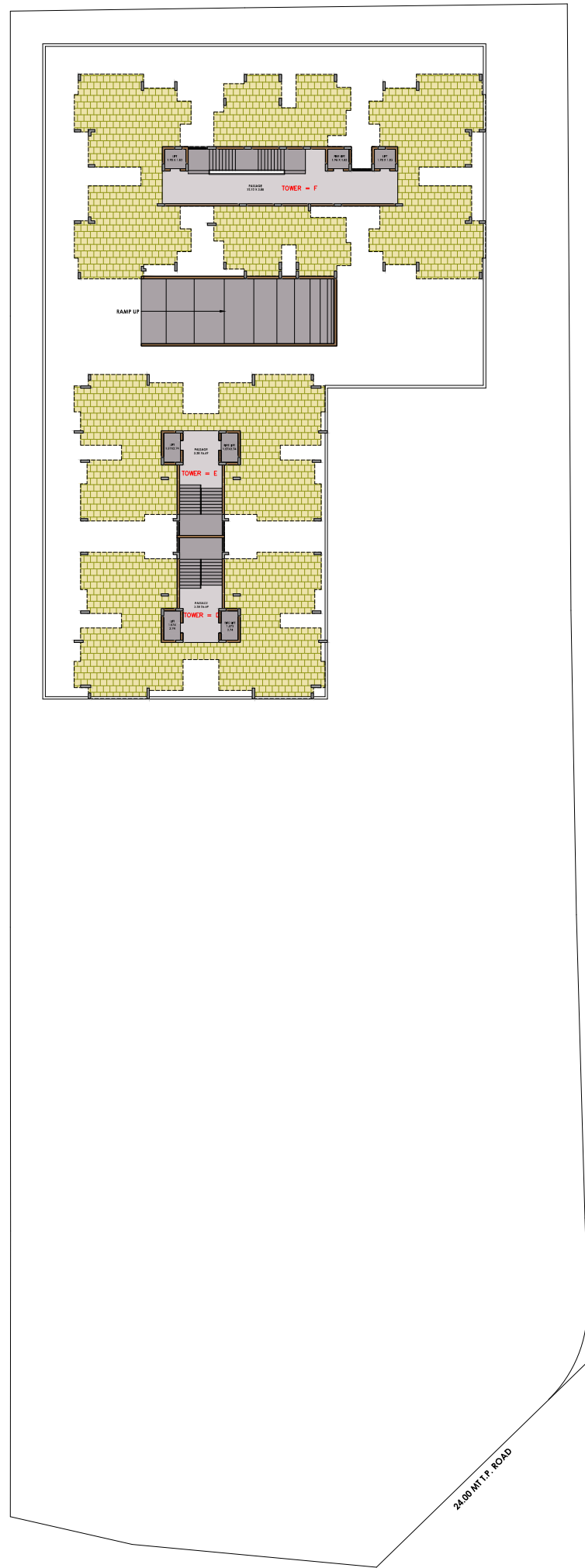


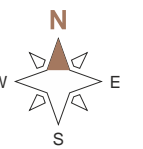
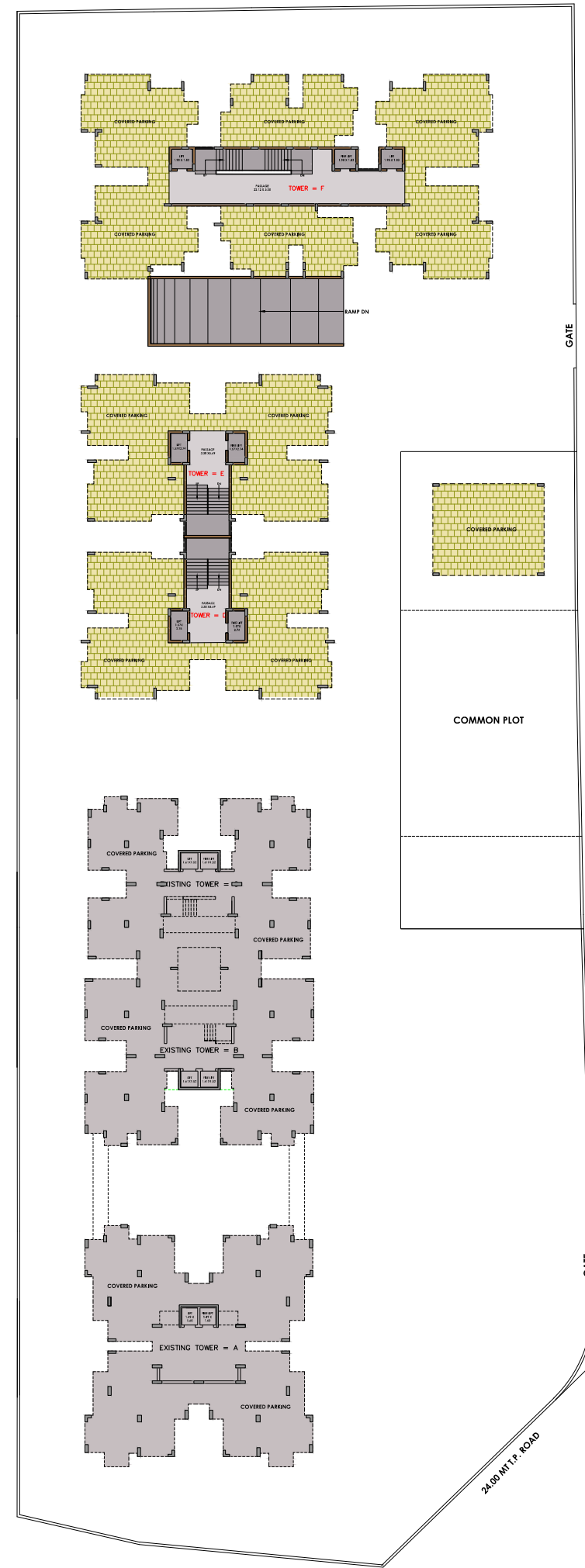
Copper[®]
green city



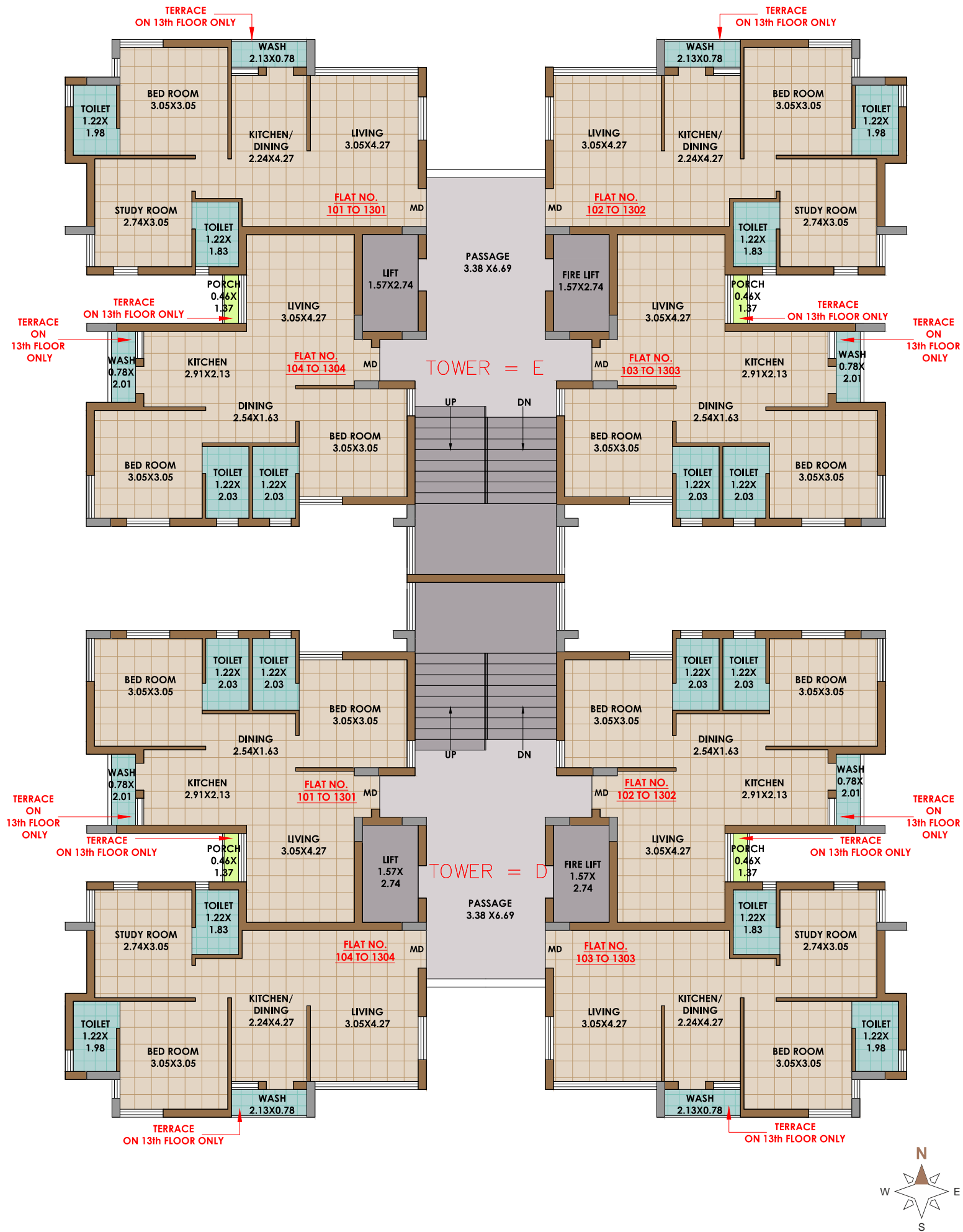
BASEMENT PLAN



GROUND FLOOR PLAN



TOWER D & E - 1st TO 13th FLOOR PLAN



TOWER F - 1st TO 14th FLOOR PLAN



SPECIFICATIONS

FLOORING

- Granite tiles / Vitrified tiles. (Up to seal level)

KITCHEN

- Granite platform with S.S. sink.
- Designer tiles up to lintel level.
- Wash basin in common area with tiles dado.
- Granite / Kota stone rack with tiles dado in store.

DOOR

- Decorative pine wood main door with designed laminate along with handle and safety lock.
- Pine wood flush doors with granite / marble / wooden frame and hardware fittings.

ELECTRIFICATION

- Modular switches.
- Concealed circuit wiring.
- MCB in individual flat for safety.
- Two way light & fan points.
- AC points in flats.
- Sufficient points for T.V., freeze, washing machine, etc.

PLUMBING

- CPVC/UPVC plumbing & drainage piping.
- Provision for central plumbing system for hot water in each flat.

WINDOW

- Powder coated aluminum section with reflective / sun glass.

BATHROOM

- Vitrified / Ceramic tiles in floor & wall (Up to lintel level) with standard sanitary in all bathroom.

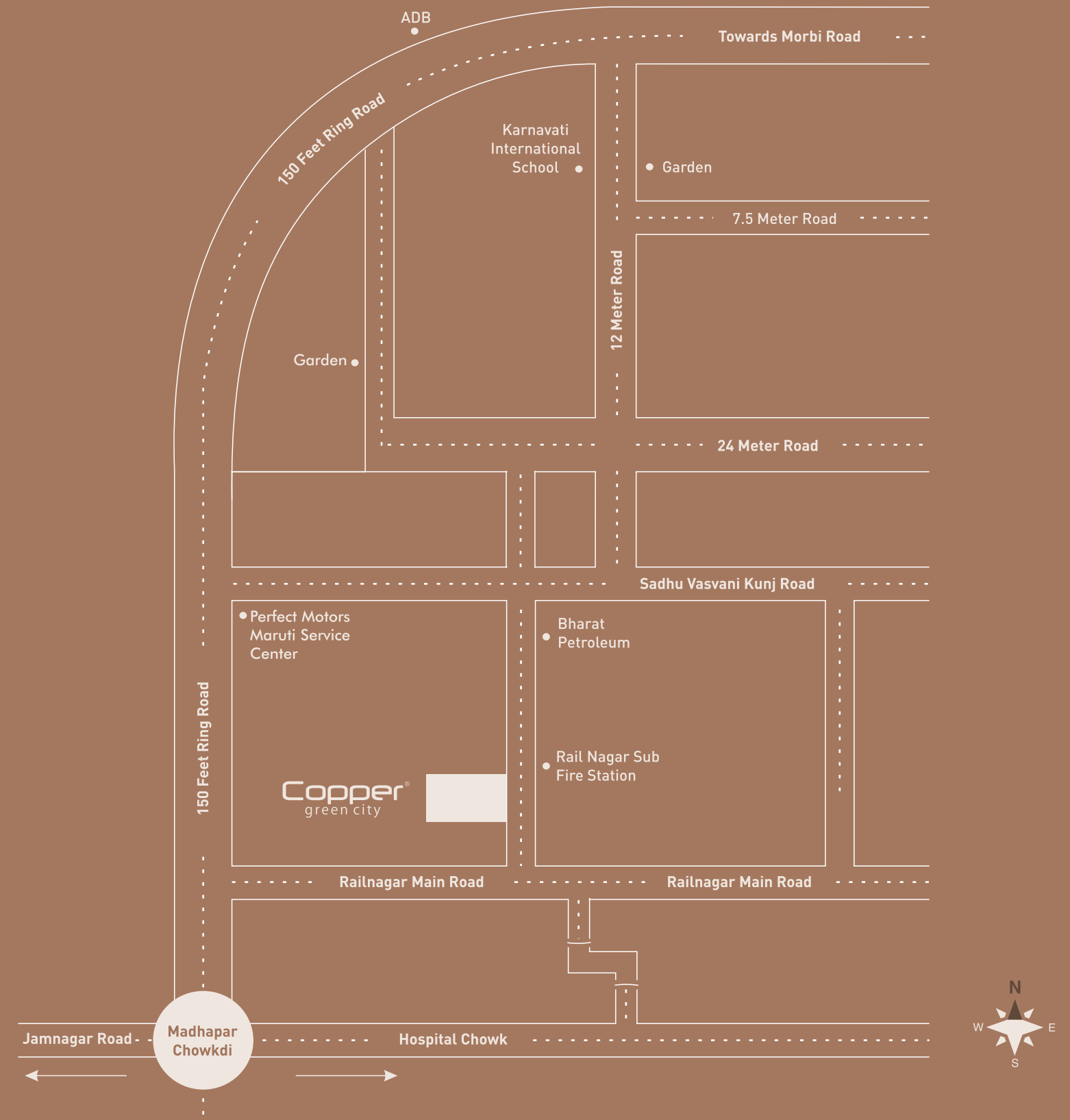
ENAMEL

- Well finished putty on internal walls in flat.
- Water paint colour in common areas.

PARKING

- Two wheeler & four wheeler parking on ground floor & in basement.

KEY PLAN



ARCHITECT
CHIRAG TANTI

STRUCTURE DESIGNER
ASHWIN LODHIYA

LEGAL ADVISOR
HIMANSHU & PAJWANI

CONTACT

78784 60000

SITE ADDRESS

80 Feet Road, Opp. Fire Brigade, Rail Nagar, Rajkot - 360 006.