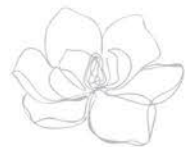


PROJECT BY :

Samatva Group
Smiles together, Miles together

www.samatvagroup.in



SITE ADDRESS :
SAMATVA MAGNOLIA, @132 Ft. New Ognaj-Gota Road, (OG Road),
Nr. Ognaj Circle, Ahmedabad - 380060.

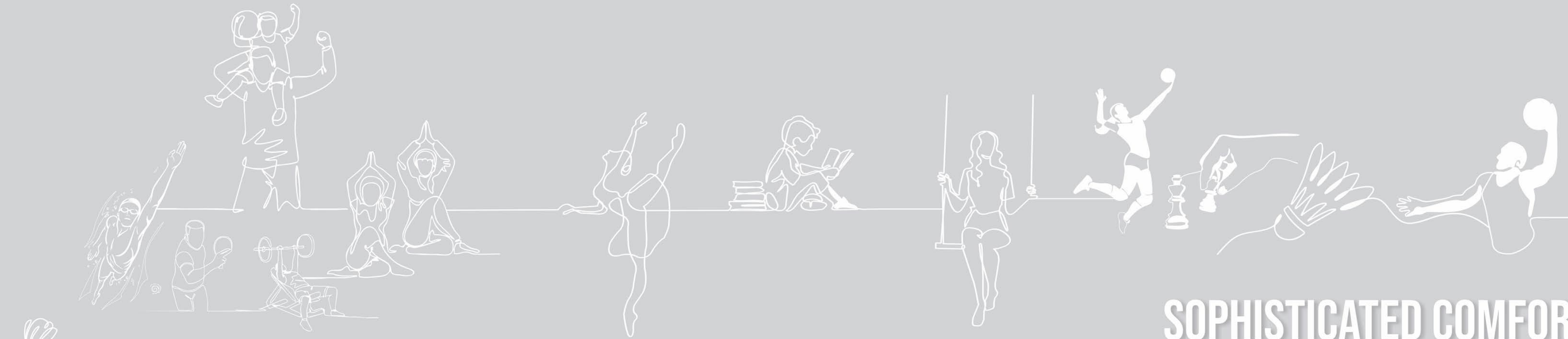
CONTACT : 079 69 47 47 11



PROUD TO BE AN INDIAN

Samatva
Magnolia 

4 & 3 BEDROOM SPORTS AND LIFESTYLE LIVING



SOPHISTICATED COMFORTS

Where extravagance
meets comfort, discover our
opulent amenities...



1ST FLOOR PLAN



40 FT. ROAD



132 FT. TP ROAD

2ND,4TH,6TH,8TH,10TH,12TH FLOOR PLAN



40 FT. ROAD



132 FT. TP ROAD

3RD, 5TH, 7TH, 9TH, 11TH, 13TH FLOOR PLAN



40 FT. ROAD



132 FT. TP ROAD

14TH FLOOR PLAN



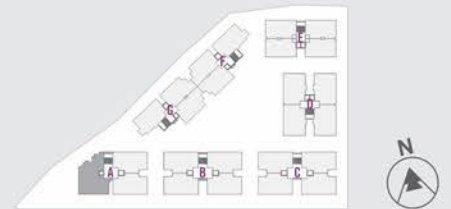
40 FT. ROAD



132 FT. TP ROAD

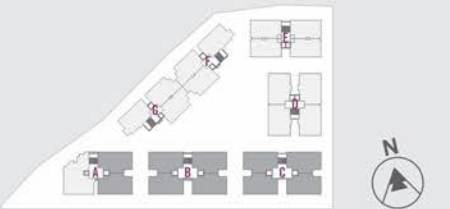


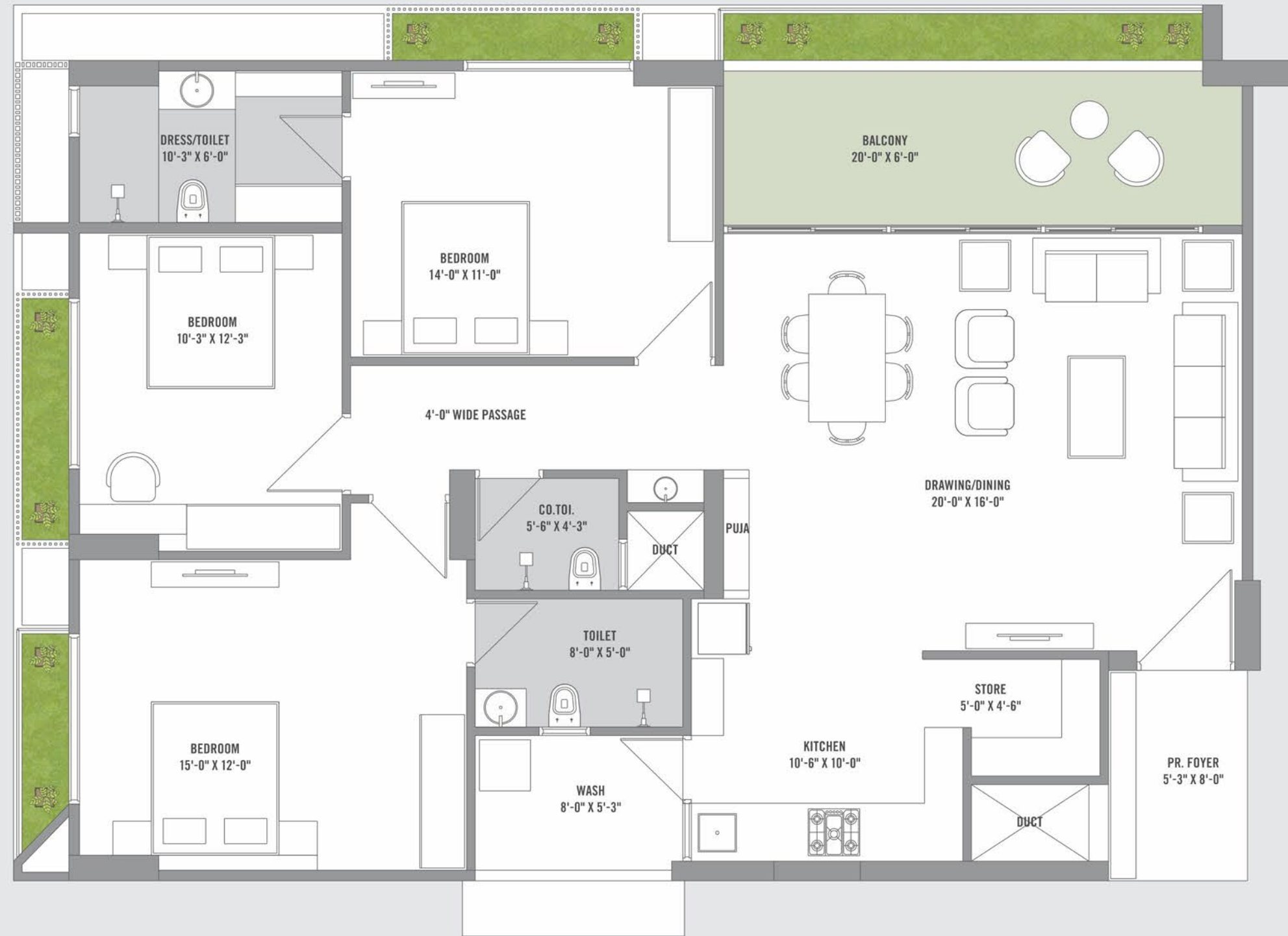
4 BEDROOM BLOCK - A



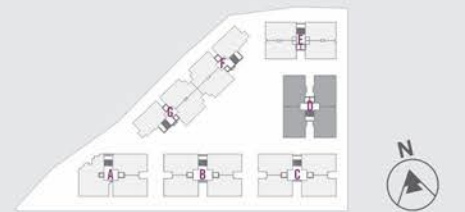


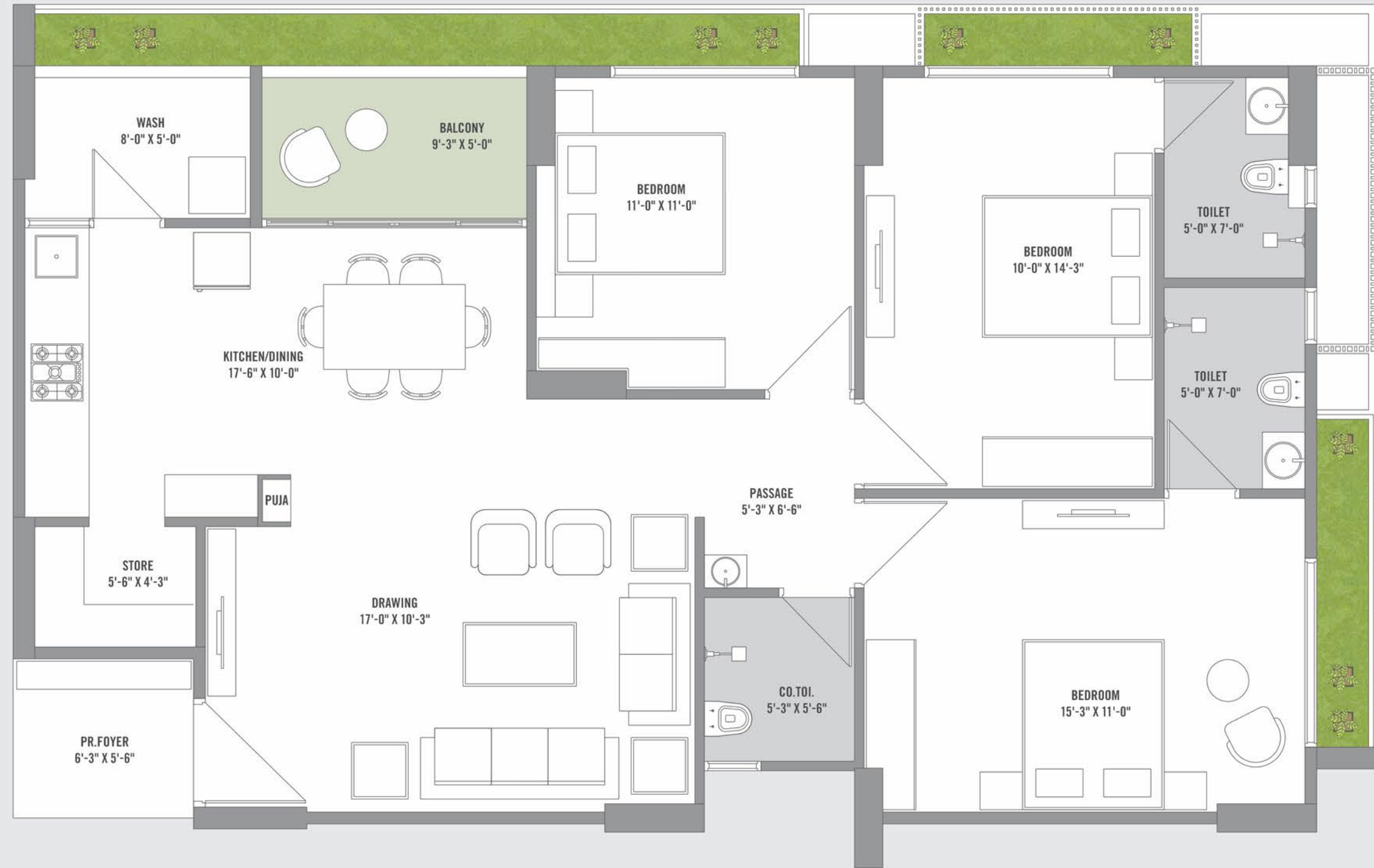

3 BEDROOM BLOCK - A,B,C





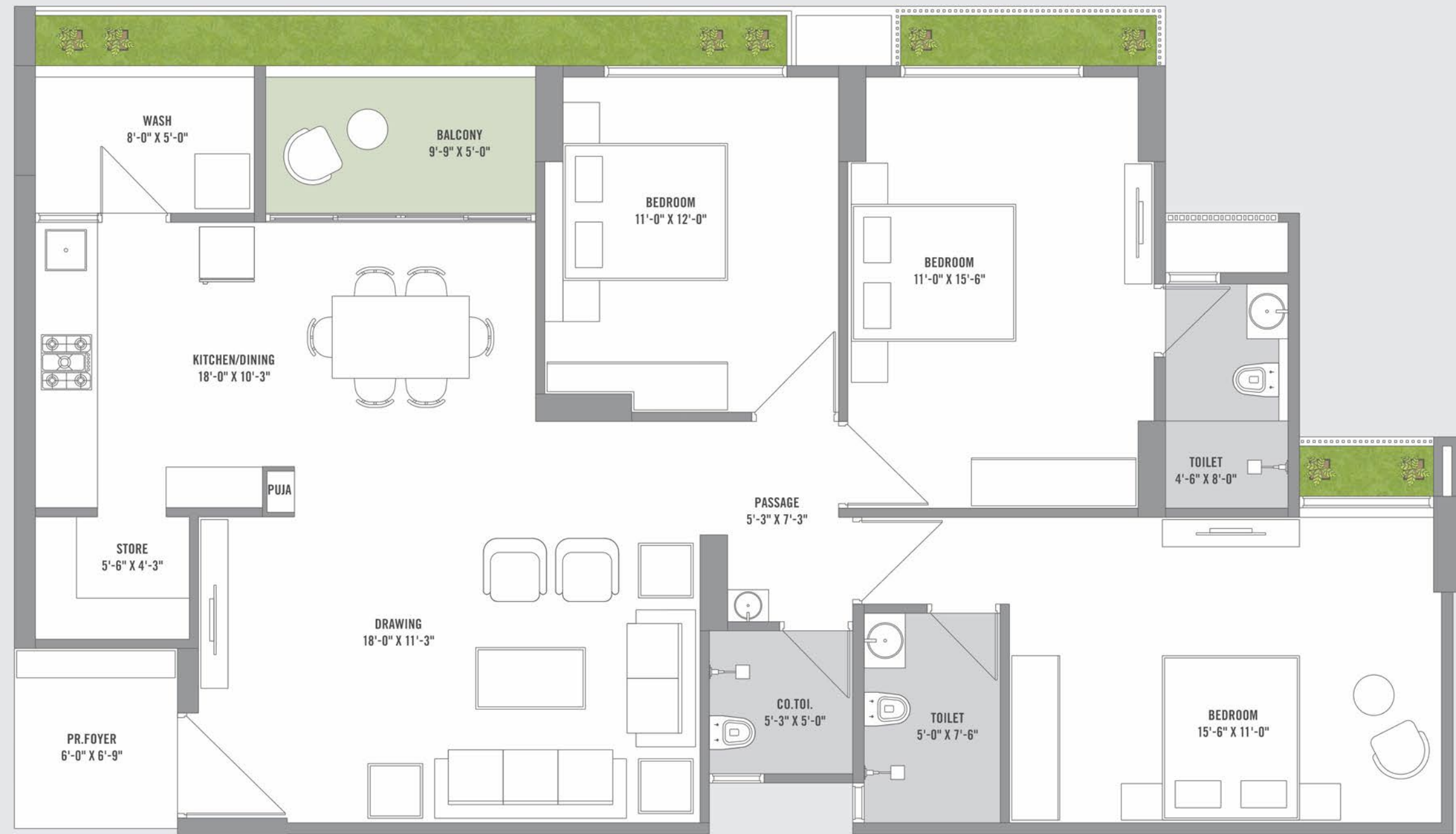
3 BEDROOM BLOCK - D



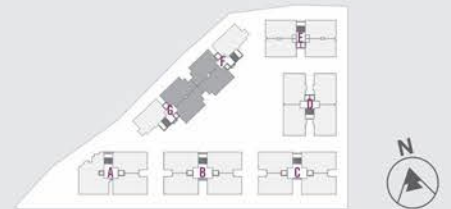


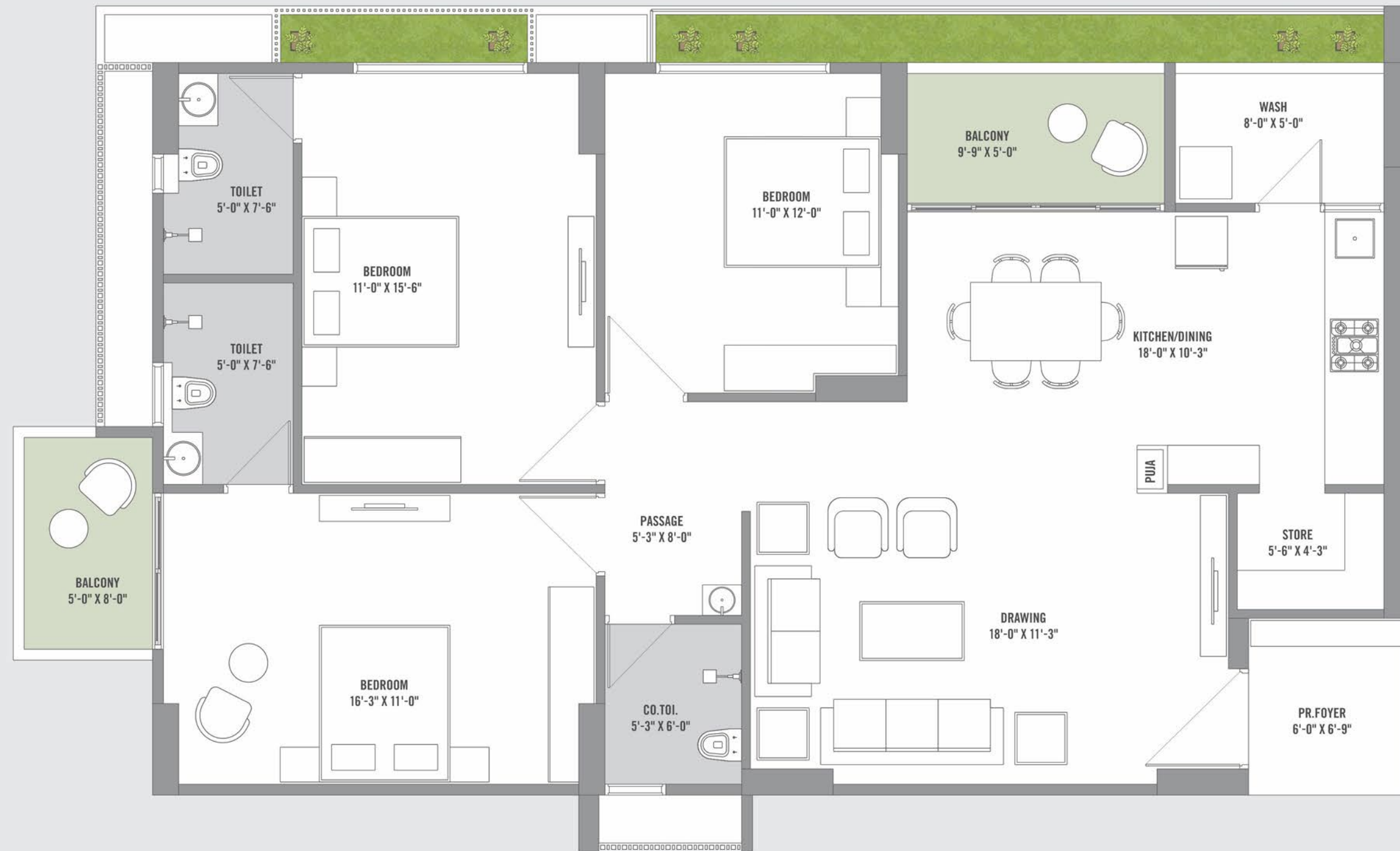
3 BEDROOM BLOCK - E



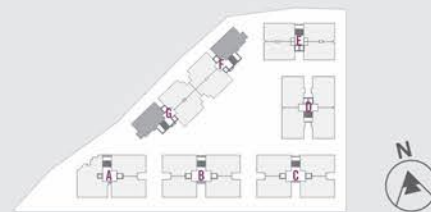



3 BEDROOM BLOCK - F & G






3 BEDROOM BLOCK - F & G







PROJECT BY :
Samatva Group
 Smiles together, Miles together

ARCHITECT :

SPLINE
DESIGN

LANDSCAPE ARC. :



STRUCTURE ENG. :



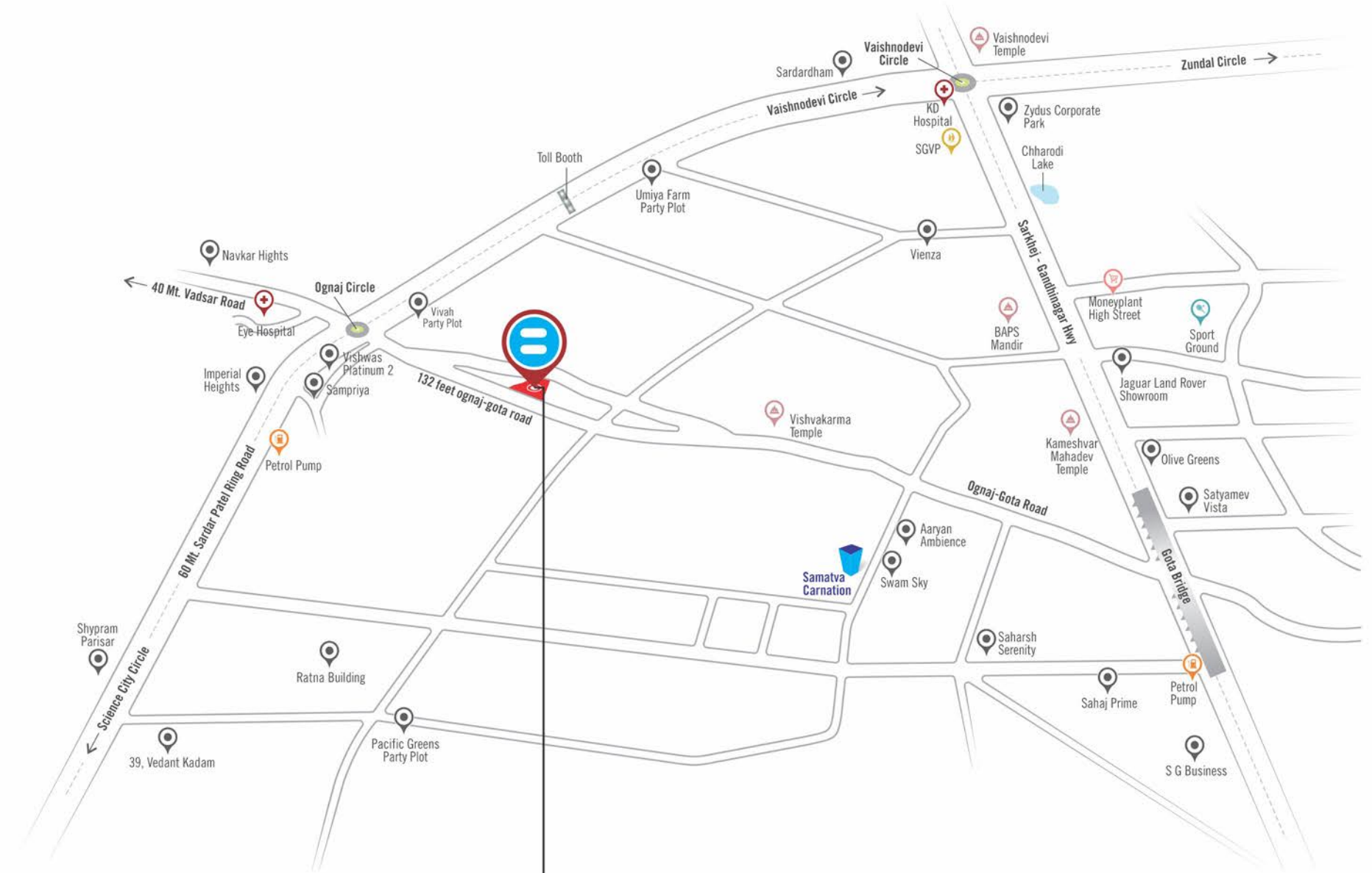
PARKING CON. :



www.samatvagroup.in

LEGAL NOTE :

• Stamp duty, Registration charges, Legal documentation charges, Initial maintenance charges, Maintenance deposit, Narmada water connection, Gas connection, AMC charges, GEB electrical charges including cable & sub-station cost shall be borne by the purchaser. • GST and any additional charges, taxes, cess or duties levied by the government/local authorities prior, during or after the completion of the scheme will be borne by the purchaser. • Any other liabilities due to change in the bylaws, Stamp duty, Govt. Laws shall be borne by purchaser. • In the interest of the continual developments in design and quality of construction, the developer reserves all rights to make suitable changes in the scheme and all the purchasers shall abide by such changes. • Changes / alteration of any nature including the elevations, exterior colour scheme of the unit or any other change affecting the overall design concept & outlook of the scheme are strictly NOT PERMITTED during or after the completion of the scheme. • All rights reserved with the organizers to make any changes in the scheme & specification and the members shall abide by such changes. • Internal changes shall be done only with prior permission & shall be charged extra in advance. • Irregular payment shall cause cancellation of booking. • This brochure is intended only to convey the essential design and technical features of the scheme and shall not be construed to form part of the legal document. Agreement for sale shall be final and binding to the purchaser. • All elements, objects, treatments, material, equipment and colour scheme shown are artist's impression. Actual may be different as per architect's design. • All dimension shown here are unfinished to unfinished wall and of the longest measure of the area. • Subject to Ahmedabad Jurisdiction.



Samatva
Magnolia

SITE ADDRESS :
 SAMATVA MAGNOLIA, @132 Ft. New Ognaj-Gota Road, (OG Road),
 Nr. Ognaj Circle, Ahmedabad - 380060.

CONTACT : 079 69 47 47 11

RERA NO : PR/GJ/AHMEDABAD/DASKROI/Ahmedabad Municipal Corporation/MAA13907/290724/311227 | www.gujrera.gujarat.gov.in

Developers reserve the rights for alteration of specification, elevation colour and design. All dimensions area are approximate, average & subject to variations. This brochure is not to be treated as part of the legal document, it is for the easy presentation of the project.

Disclaimer : the details, facts, specifications, figures mentioned in brochure are indicative for information purpose only and are subject to modifications/compliance required as per RERA act.