



dream life

visit www.dreamlife.com

12 x 12 m
TYPICAL FLOOR
ON 15G-ABCE



3 BHK





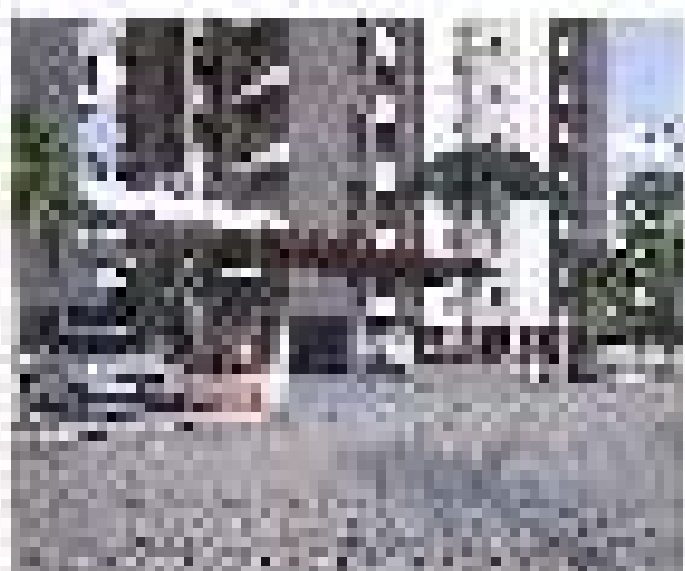
Apartment Rentals For 'Dish Rich'

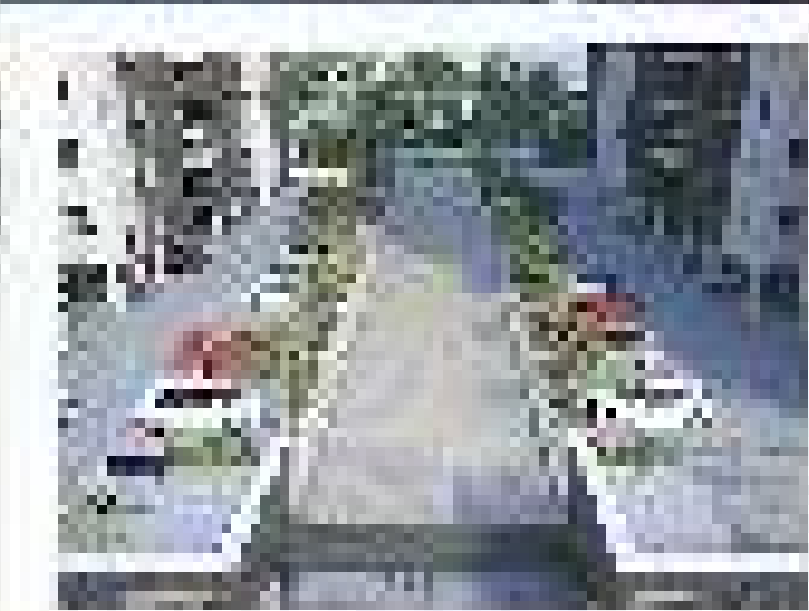
APARTMENT RENTERS IN THE DASH RICH AREA OF THE CITY OF WASHINGTON ARE BEING ATTRACTIONED TO A NEW APARTMENT COMPLEX THAT IS BEING BUILT IN THE AREA.

The new apartment complex is located in the area of the city of Washington, D.C. and is being built by the company that has built the other apartment complexes in the area.

The new apartment complex is being built by the company that has built the other apartment complexes in the area.

By the way, the new apartment complex is being built by the company that has built the other apartment complexes in the area.

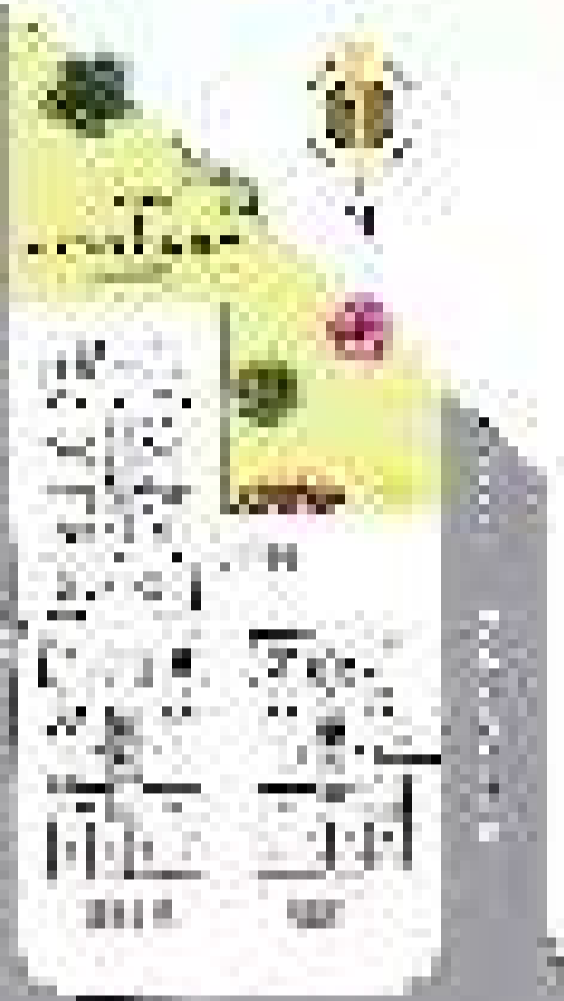
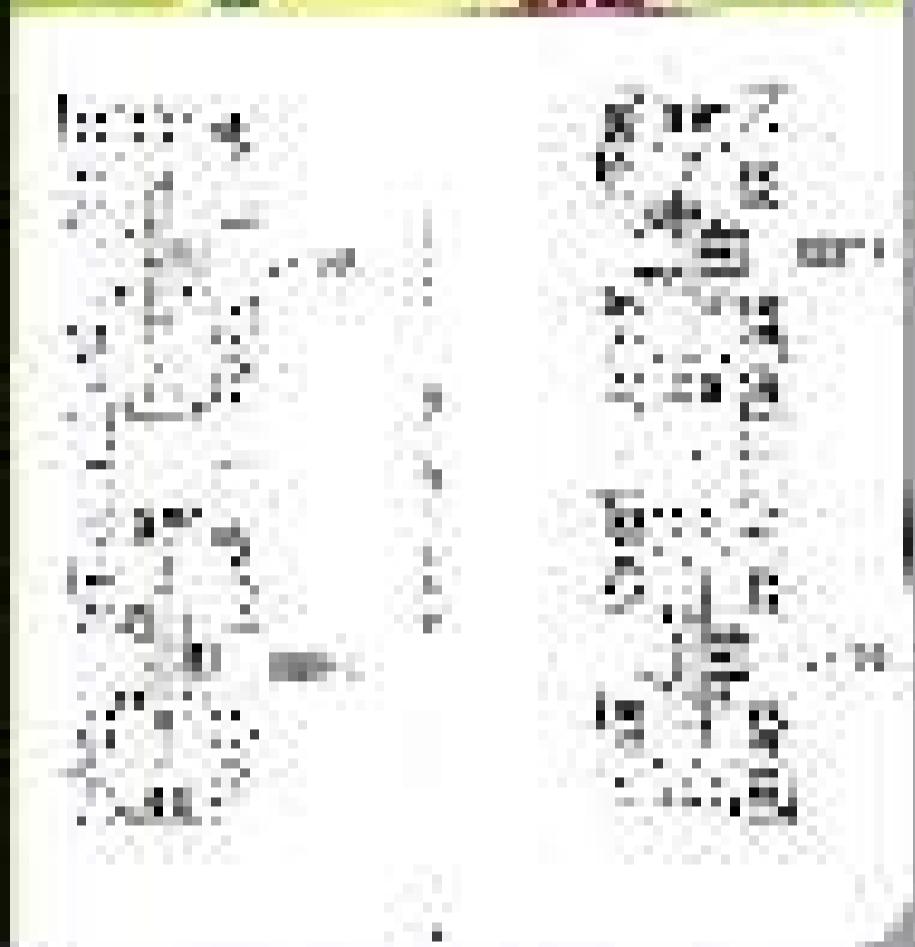




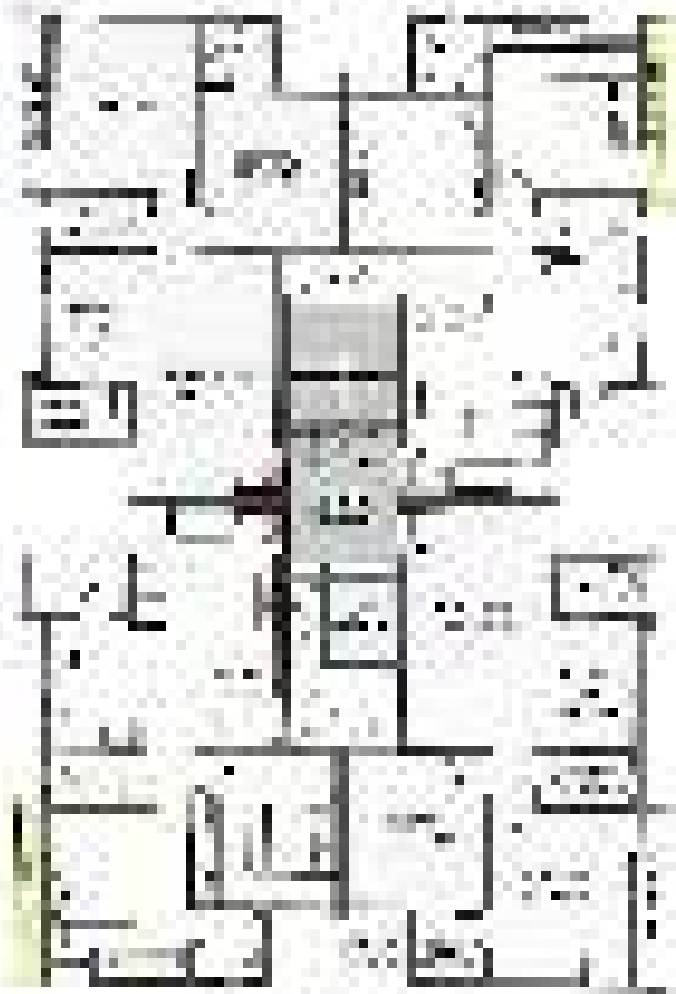




LAYOUT PLAN



TYPICAL FLOOR BUILDING PLAN

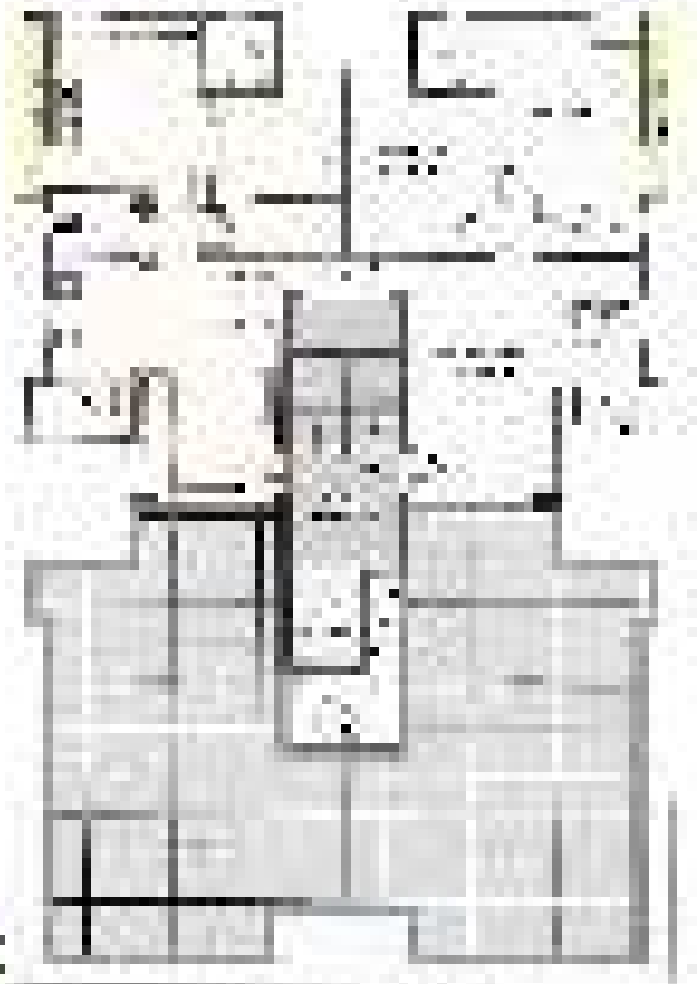


1st Floor Plan



Ground Floor Plan

2 BHK



1st Floor Plan



12.05.70
TYPICAL FLOOR
PLAN 43-1



2 BHK





2014-2015 Annual Report

Financial Performance



Introduction

The purpose of this study is to investigate the effects of a new educational program on student learning outcomes. The program focuses on enhancing critical thinking and problem-solving skills through a series of interactive activities and projects. The study aims to determine if the program leads to significant improvements in student performance compared to traditional lecture-based instruction.

The research is conducted in a controlled environment over a period of six months. Data is collected through pre-tests, post-tests, and regular assessments. The results will be analyzed using statistical methods to identify any significant differences between the two groups. The findings will be used to inform future educational practices and program development.

Methodology

The study uses a quasi-experimental design. Participants are divided into two groups: an experimental group that receives the new program and a control group that follows the standard curriculum. Both groups are assessed at the beginning and end of the study. The data is analyzed using a t-test to compare the mean scores of the two groups. The significance level is set at 0.05. The results show a statistically significant increase in scores for the experimental group, indicating the effectiveness of the program.



Results

The results of the study show a significant improvement in the experimental group's scores compared to the control group. The mean score for the experimental group increased from 75 to 85, while the control group's score remained at 75.

Conclusion

The study concludes that the new educational program is effective in improving student learning outcomes. The program's focus on critical thinking and problem-solving skills is a key factor in this success.



This study was supported by the National Science Foundation. The authors would like to thank the participants and the research assistants for their contributions to this study.