

AMEE
Developers



Palmcity

A 2 BHK Luxurious Project

AMEE DEVELOPERS
245-29th Street, Palm Jumeirah - 245-2
P.O.A. HOLDER

PLAN-1 2BHK UNIT PLAN



AMEE DEVELOPERS

2024/01/24 2:47

P.O.A. HOLDER

PLAN-2 2BHK UNIT PLAN



AMEE DEVELOPERS

02141 212191-242

P.O.A. HOLDER

PLAN-2 2BHK UNIT PLAN



AMEE DEVELOPERS

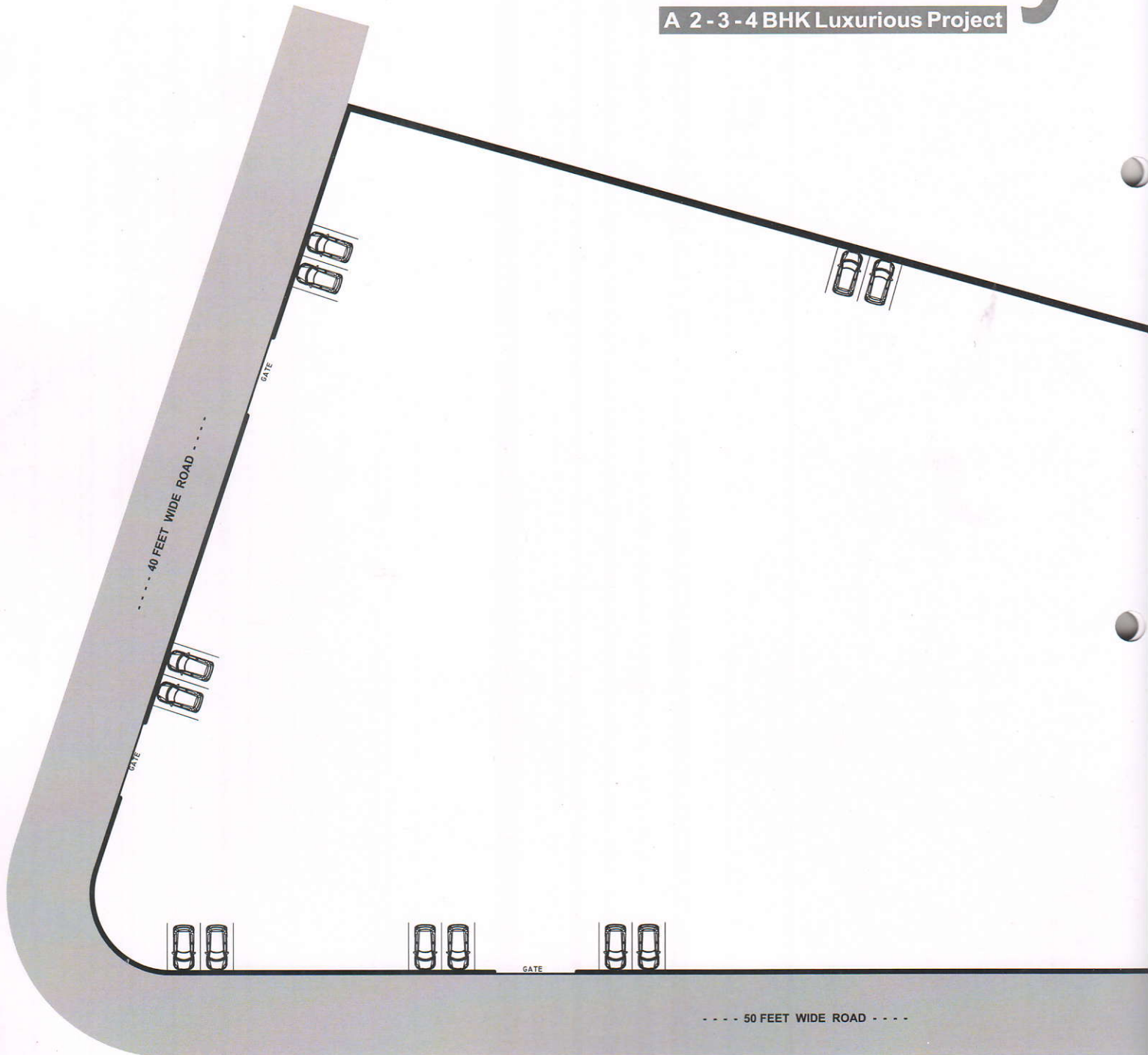
சென்னை அமீ டெவலப்மென்ட்ஸ்

P.O.A. HOLDER



Palmcity

A 2-3-4 BHK Luxurious Project

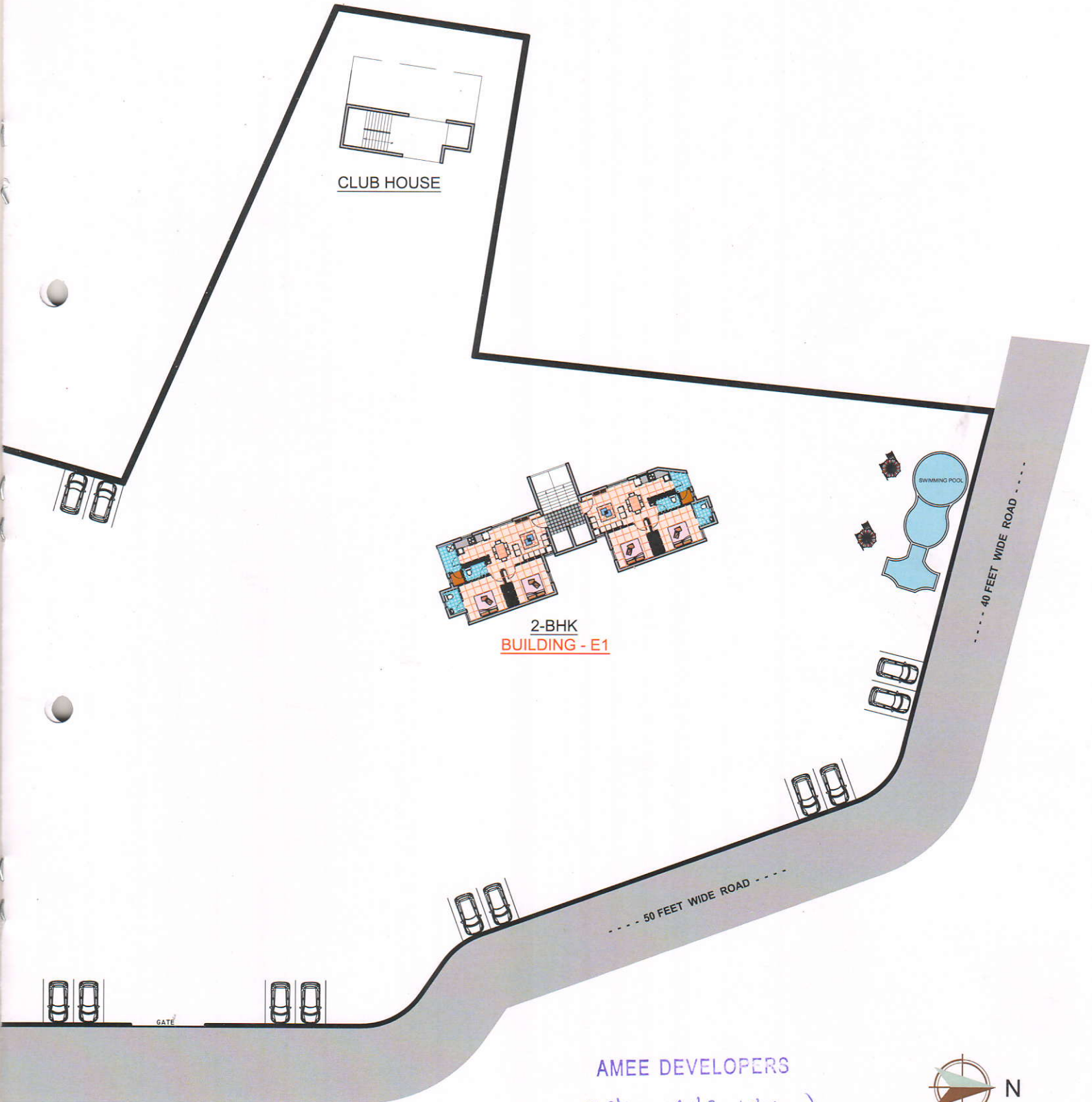


AMEE DEVELOPERS

21214, 21215, 21216

P.O.A. HOLDER

T PLAN



CLUB HOUSE

2-BHK
BUILDING - E1

SWIMMING POOL

AMEE DEVELOPERS

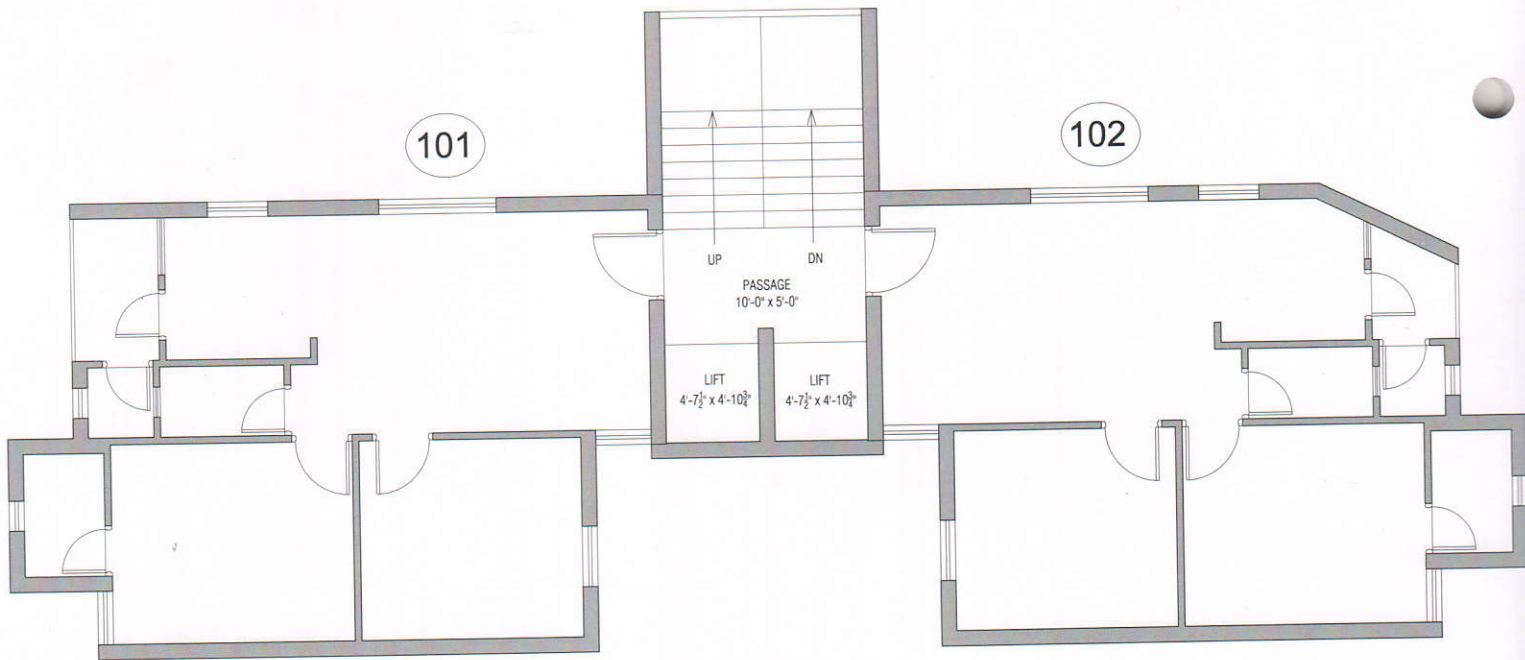
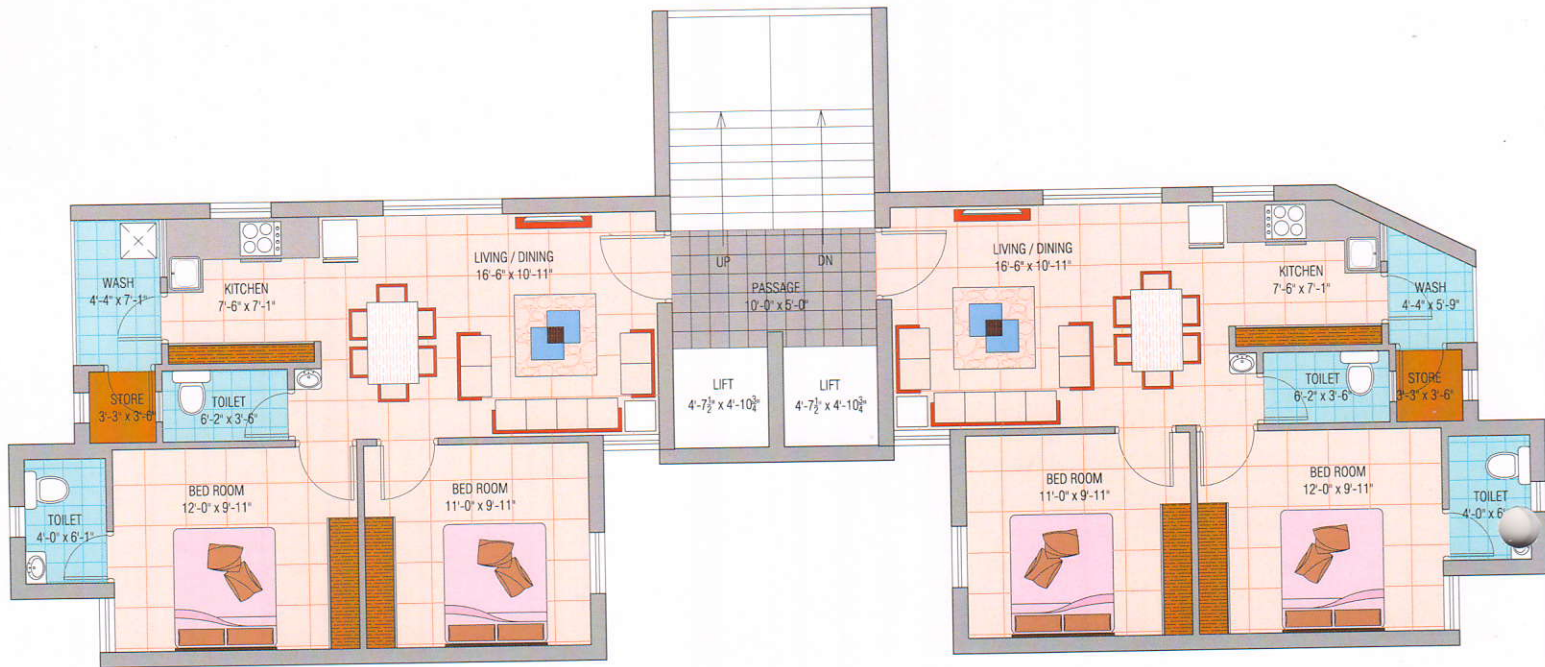
212/41 2/2/21-2473

P.O.A. HOLDER



Layout Plan

2 BHK FLOOR PLAN

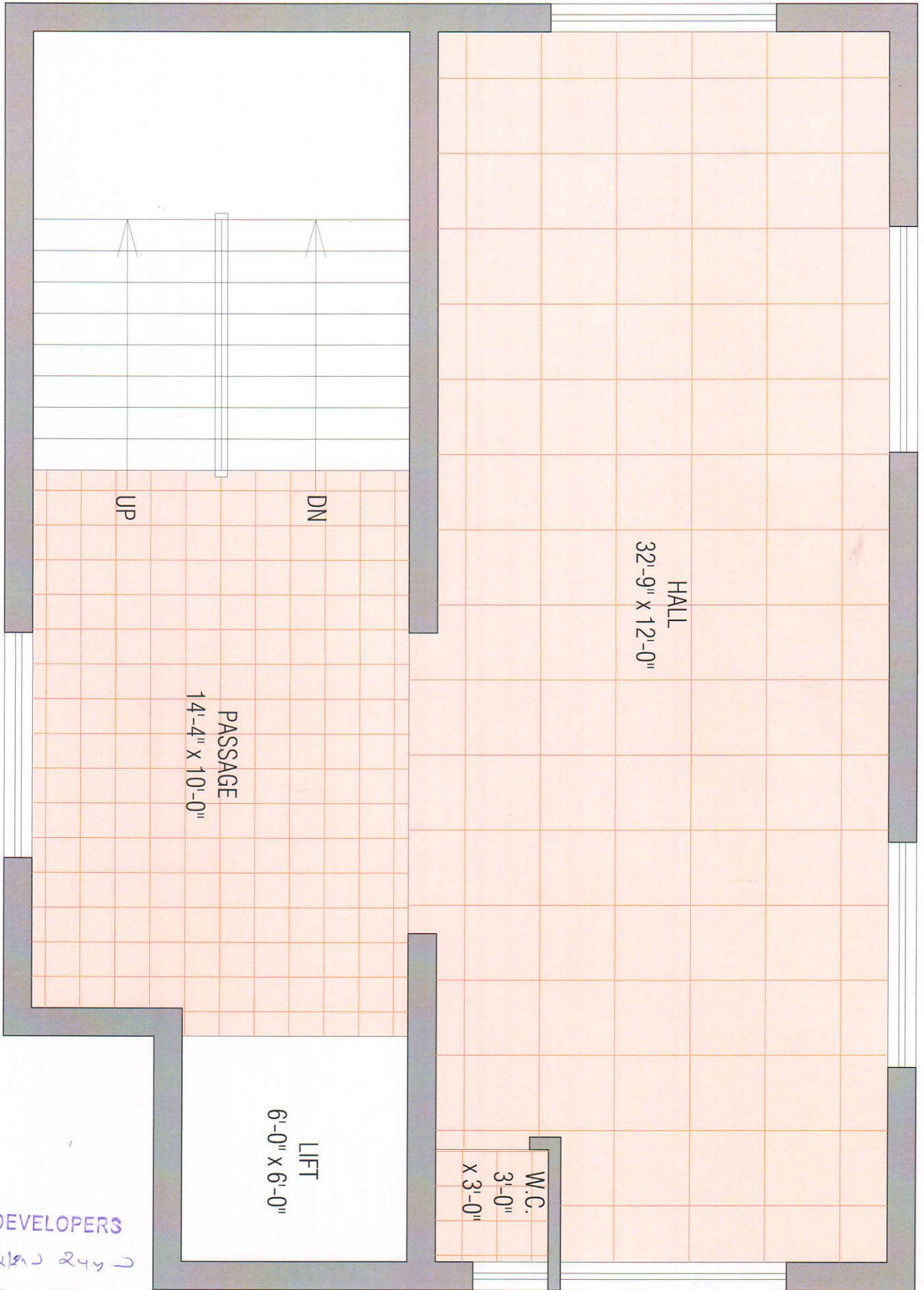


AMEE DEVELOPERS

01614 01212-2457

P.O.A. HOLDER

CLUB HOUSE PLAN



AMEE DEVELOPERS

244/245/246/247/248/249/250/251/252/253/254/255/256/257/258/259/260/261/262/263/264/265/266/267/268/269/270/271/272/273/274/275/276/277/278/279/280/281/282/283/284/285/286/287/288/289/290/291/292/293/294/295/296/297/298/299/300/301/302/303/304/305/306/307/308/309/310/311/312/313/314/315/316/317/318/319/320/321/322/323/324/325/326/327/328/329/330/331/332/333/334/335/336/337/338/339/340/341/342/343/344/345/346/347/348/349/350/351/352/353/354/355/356/357/358/359/360/361/362/363/364/365/366/367/368/369/370/371/372/373/374/375/376/377/378/379/380/381/382/383/384/385/386/387/388/389/390/391/392/393/394/395/396/397/398/399/400/401/402/403/404/405/406/407/408/409/410/411/412/413/414/415/416/417/418/419/420/421/422/423/424/425/426/427/428/429/430/431/432/433/434/435/436/437/438/439/440/441/442/443/444/445/446/447/448/449/450/451/452/453/454/455/456/457/458/459/460/461/462/463/464/465/466/467/468/469/470/471/472/473/474/475/476/477/478/479/480/481/482/483/484/485/486/487/488/489/490/491/492/493/494/495/496/497/498/499/500

P.O.A. HOLDER

Internal Specifications

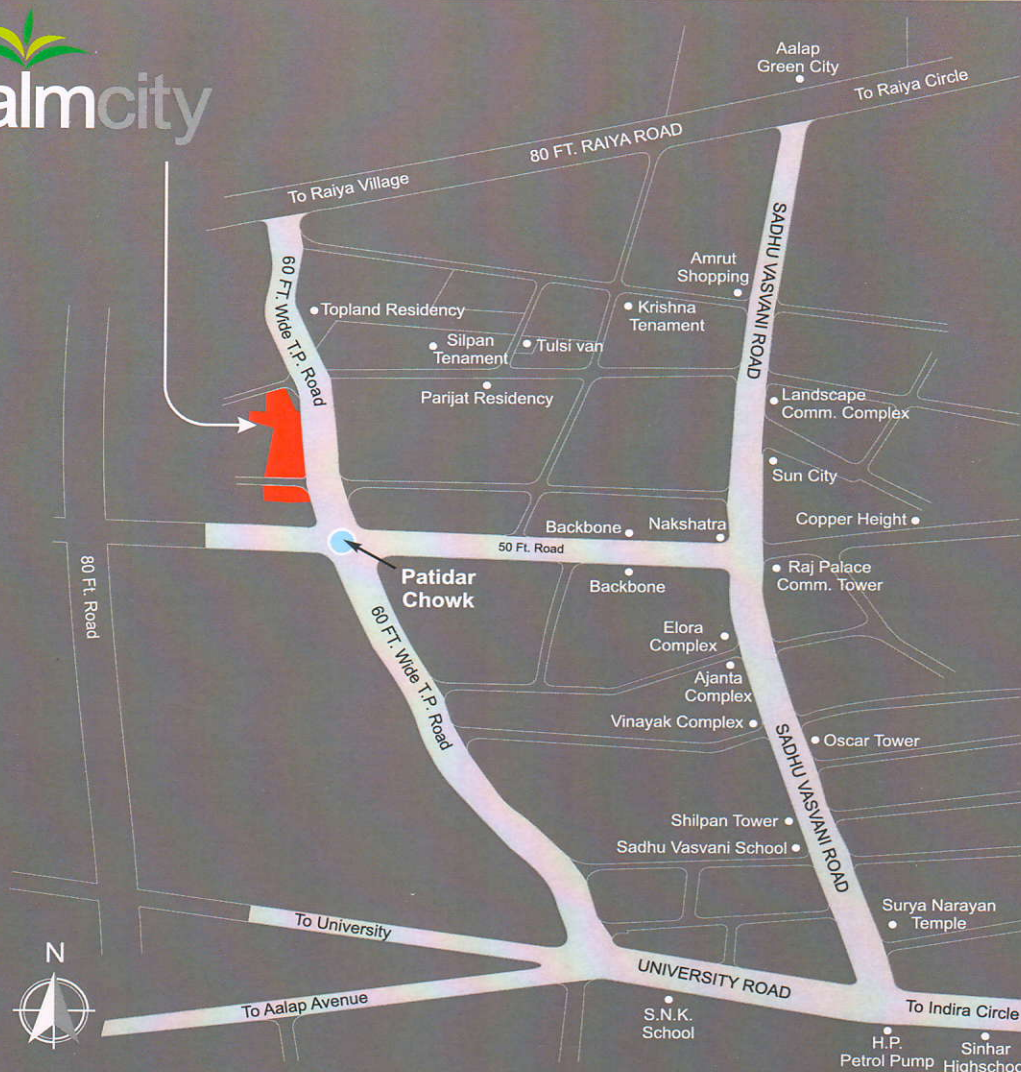
Structure :
 Earthquake Proof
 R. C. C. Frame
Flooring :
 Fully Vitrified
Kitchen :
 Granite Platform with
 Stainless Steel Sink

Door :
 Decorative Main Door
 Other Flush Door
Window :
 Aluminum Section with
 Window seal

Elevator :
 Automatic Reliable branded
 Elevator
Electric :
 Concealed with
 ISI Modular Switches

Bath/Toilet :
 Fully Glazed with Standard Fitting
Plumbing :
 Standard quality
 ISI PVC Fittings


Palmcity



Site: Near Patidar Chowk, Sadhu Vasvani Road, Rajkot.

Developers: **AMEE DEVELOPERS**
 304, Nakshatra 3, 150' Ring Road, Nr. Raiya Telephone Exchange, Rajkot.

Promoters: **Palm Group**

Contact: **+91 90673 51111**
+91 90673 81111

DISCLAIMER:

- Stamp Duty & Registration Service Tax, VAT of any such additional taxes would be charged extra.
- Maintenance deposit would be charged extra.
- No external changes would be permitted.
- Terrace rights would rest with Developers.
- Gas, Electricity, & Water connection charges would be extra.
- Builders reserves all rights to change if necessary without any prior notice.
- This brochure is for information purpose only. It does not form a part of the agreement or any legal document.

AMEE DEVELOPERS

(Handwritten signature in blue ink)

P.O.A. HOLDER