


ALLIANCE
NICON

GHANSOLI

A vertical gold-colored rectangular frame, open at the top and bottom, positioned above the main headline.

A Privileged life Awaits You !

Welcome to Alliaance Icon, a towering new milestone brought to you by Alliaance Group. Located in Ghansoli, the heart of Navi Mumbai, our landmark project is thoughtfully designed to give you the comfort and luxury of a truly contemporary lifestyle. Our Premium 2 BHK apartments are designed to provide your home with unrestricted natural light. Our world-class amenities will offer your family an unparalleled lifestyle.

A vertical gold-colored rectangular frame, open at the top and bottom, positioned below the main text block.

An aerial photograph of a city at sunset. The sky is filled with soft, golden clouds, and the sun is low on the horizon, casting a warm glow over the scene. Below, a dense urban landscape is visible, featuring a prominent multi-level highway interchange with several overpasses and ramps. The buildings and streets are silhouetted against the bright sky, creating a high-contrast, atmospheric scene.

Discover new
highs of the
grand life.



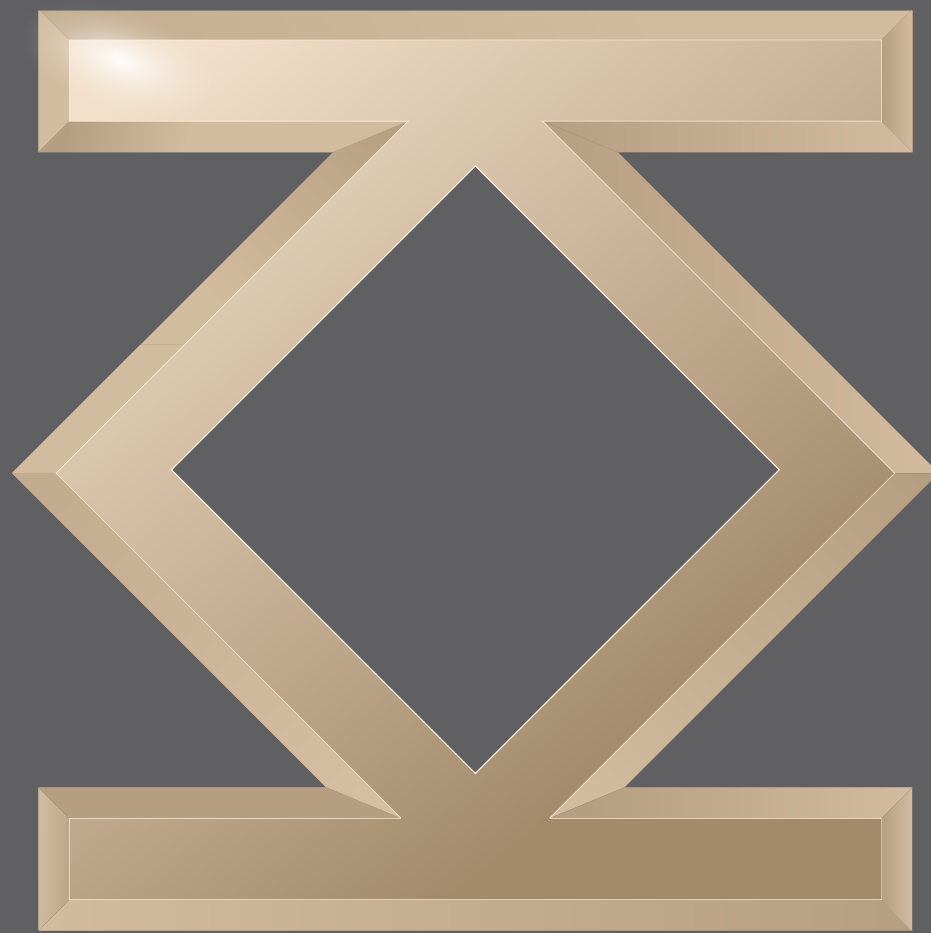
Premium
2BHK Apartments



“Centrally
Located,
Strategically
Connected”

One of the most blessed location of Navi Mumbai, Ghansoli enjoys proximity to various residential and commercials developments and shares a rich living experience. It is a preferred destination for setting up a dream house for many due to excellent connectivity. Retail and Commercial Developments, Entertainment Avenues, Shopping Centers, Hospitals, Restaurants, Ghansoli has a seductive appeal and glitters of a great place.

The New Benchmark of Brilliance




- ◇ CIDCO Tender Plot
- ◇ Corner Plot On 30X15 Mtr Wide Road
- ◇ Decorative Air-conditioned Entrance Lobby
- ◇ Elegant Waiting Lounge
- ◇ Recreational Amenities
- ◇ Lush Greenery
- ◇ High Speed Automatic Elevators
- ◇ Intercom & Video Door Phone in Each Apartment
- ◇ 3 Tier Security With CCTV Surveillance System
- ◇ Adequate Car Parking Space
- ◇ Generator Backup For Elevators & Common Area
- ◇ Designer Lift Lobby On All Floor
- ◇ Elegant Building Entrance Gate

Grand Spaces for a grand lifestyle!





A modern bedroom interior featuring a bed with dark bedding and a light-colored blanket, a nightstand with a lamp, and a large dark wood wardrobe. The scene is framed by a gold border.

Spaces that
elevate your
lifestyle



FLOORING

- Vitrified flooring in all rooms.
- Designer tiles in all toilets.



KITCHEN

- Granite / Composite marble for Kitchen platform.
- Designer glazed tiles upto beam height.
- Premium quality Sink and Faucets.



WALLS AND PAINTS

- Luster finish paints for internal walls.
- All weather proof Acrylic paints for external walls.
- POP / Gypsum finished internal walls.



ELECTRIFICATION

- Heavy Concealed copper gauge wiring with circuit breaker ELCB / MCB's.
- Adequate electrical points in all rooms.
- ISI modular switches of premium make.



DOORS & WINDOWS

- Decorative laminated door with wooden frame.
- Decorative laminated door in Toilets.
- Heavy section coated Aluminum sliding windows with tinted / clean glass.
- Premium quality handles & Locks.



TOILETS

- Designer glazed tiles upto beam level.
- Premium quality Sanitary wares.
- Premium Quality C.P. Fittings.
- Provision for Exhaust & Geyser point.



GENERAL

- Special water proofing treatment on terrace floor.
- Trimix / Chequer Tiles finish for stilt Area.
- Water Tank with adequate storage Capacity.

Recreational Amenities



Fitness
Center

Excitement makes life amazing and full of surprises and it makes you explore new things every day. So turn excitement into happiness, play with your younger ones, take a leisure walk amidst the green landscapes, and engage in an energetic jogging session with your neighbor to keep yourself fit and fine. Alliaance Icon presents residents with many awe-inspiring amenities adorned with happiness.



Yoga &
Meditation



Kids Play
Area



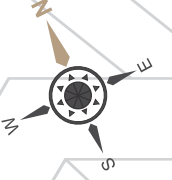
Indoor
Games



Landscaped
Garden

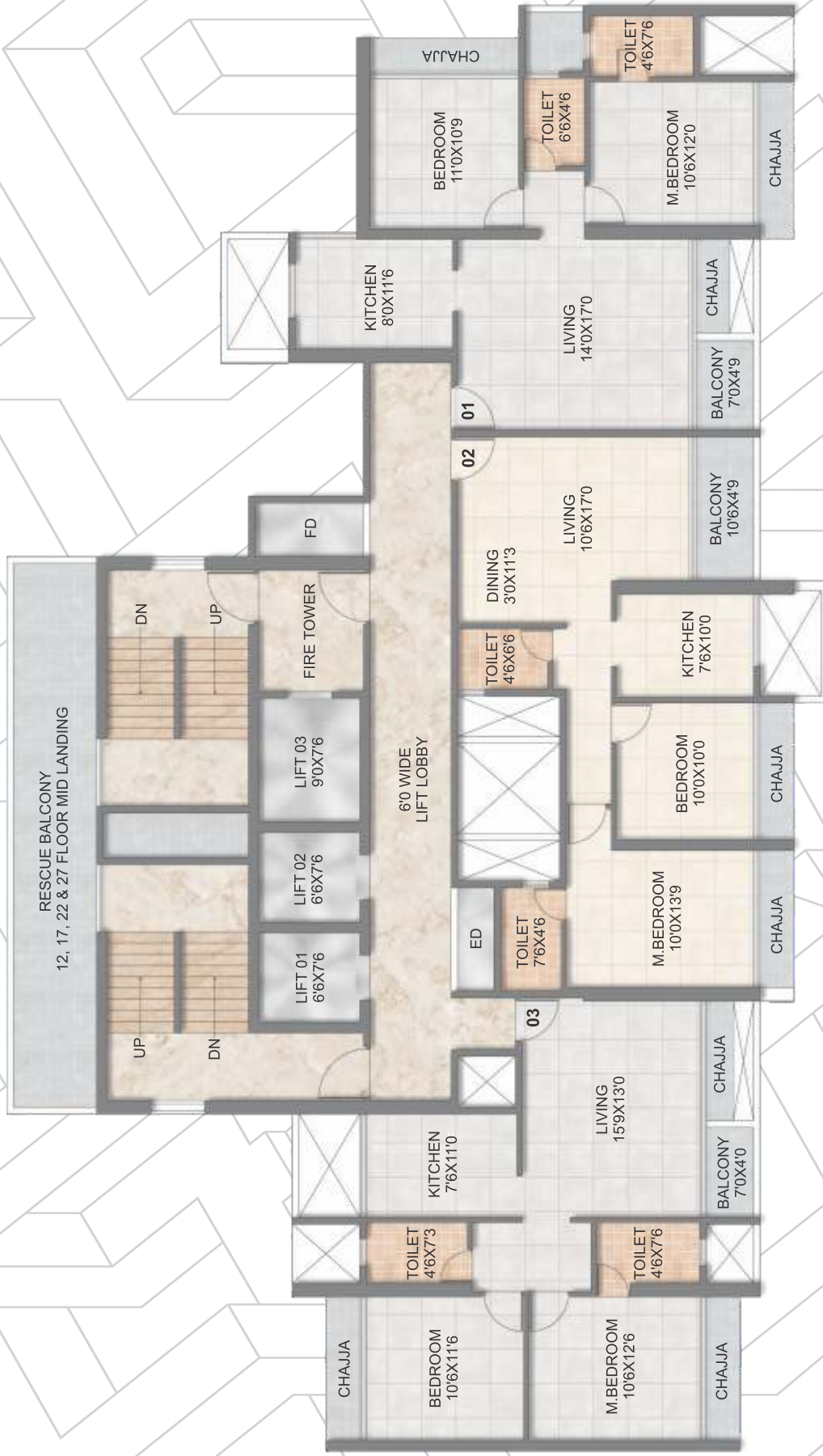


<----- 15.00 M WIDE ROAD ----->



<----- 30.00 M WIDE ROAD ----->

←----- 15.00 M WIDE ROAD ----->



←----- 30.00 M WIDE ROAD ----->



This Project Is Developed By **SATYAM INFRA**, Group Company Of **ALLIAANCE** GROUP.

Site Address: Plot No.4, Sector-8, Near D Mart, Ghansoli, Navi Mumbai. 400 701

The Project is registered as Alliaance Icon with
MahaRERA Registration No. P51700046173, Available at <http://maharera.mahaonline.gov.in>

* Please note that presently, Part Commencement Certificate and MahaRera Registration has been obtained till 9 Floors. Registration for the balance Floors shall be obtained immediately after issue of NOC by the Airports Authority of India. Booking is currently being accepted only for the Flats registered with MahaRera.

Architect : SATISH V. AHUJA AND ASSOCIATES | RCC Consultant : STRUCTURAL CONCEPT DESIGN PVT. LTD. | Legal advisor : VASHI ADVOCATES

DISCLAIMER: This is not an offer, invitation to offer, and/or commitment of any nature and the content hereof is not and should not be constructed as an offer/invitation to offer/contract or any intention thereof and/or any disclosure under any statute of any nature whatsoever. All plans, designs, Images, renders, specification, dimensions, facilities and other details herein are artistic impressions and stock images and purely for illustrative and representational purpose and indicative in nature and the intended recipient should note that these are to be treated as purely provisional and informative and as such only tentative subject to approval from respective authorities. No warranty is expressly or impliedly given that the completed development will comply in any degree with such artist's impression as depicted. The photographs contained herein are stock/standard photography and may have been taken at location other than the project site and are used to indicate a conceptual lifestyles. The actual images/views have been enhanced/touched up/airbrushed for visual, illustrative and creative purposes. All specifications of the flat/project shall be as per the final agreement between the parties. Recipients are advised to use their discretion in relying on the information/amenities described/shown herein. The visitor/recipient is aware that the furniture, fittings and fixtures displayed in the sample/show flat/ show residence at the sales pavilion /brochures are only for the purpose of showcasing the flats and we shall not be liable, required and/or obliged to provide any further, fittings as displayed in the sample/show flat/show residence at the sales pavilion/brochures. The color shades of wall, tiles etc., are for representational purpose and will vary in planning and designing and upon actual construction. The render for internal spaces is only to serve as an example of the suggested space management and possible utilization of space. Any party desirous/interested in the project need to enter into formal legal agreement for sale and the development/ transaction shall be governed by the terms and conditions of the said agreement for sale. *Government taxes/duties/levies as applicable. *Terms and Conditions apply.